

Supplement of Geochronology, 1, 85–97, 2019  
<https://doi.org/10.5194/gchron-1-85-2019-supplement>  
© Author(s) 2019. This work is distributed under  
the Creative Commons Attribution 4.0 License.



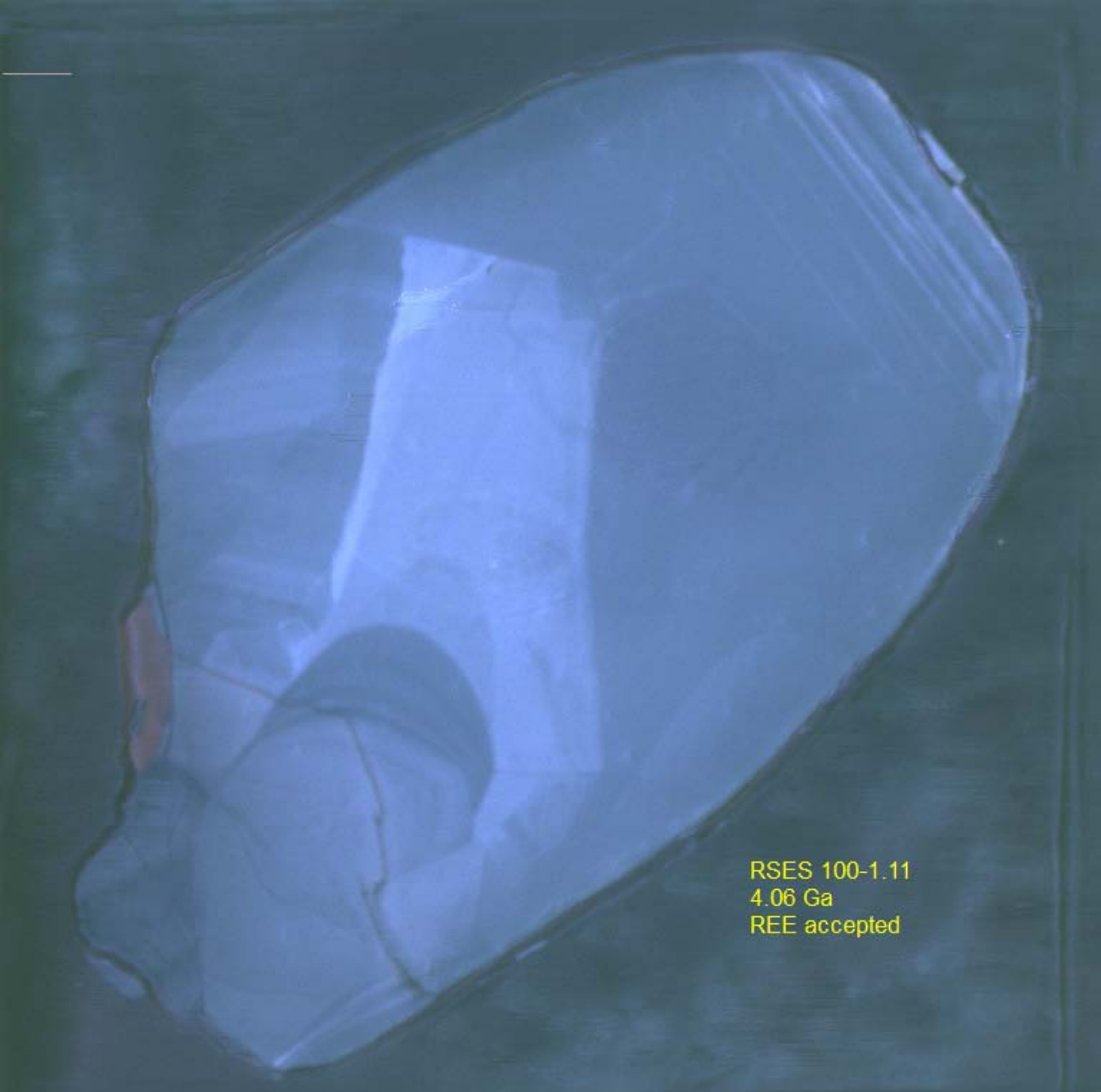
*Supplement of*

## **Stepwise chemical abrasion–isotope dilution–thermal ionization mass spectrometry with trace element analysis of microfractured Hadean zircon**

**C. Brenhin Keller et al.**

*Correspondence to:* C. Brenhin Keller (cbkeller@dartmouth.edu)

The copyright of individual parts of the supplement might differ from the CC BY 4.0 License.



RSES 100-1.11  
4.06 Ga  
REE accepted

SEM HV: 20.0 kV

WD: 17.32 mm

View field: 232  $\mu$ m

Det: Color CL



50  $\mu$ m

VEGA3 TESCAN

UCLA - EPSS

RSES 100-1.12  
3.95 Ga  
REE accepted

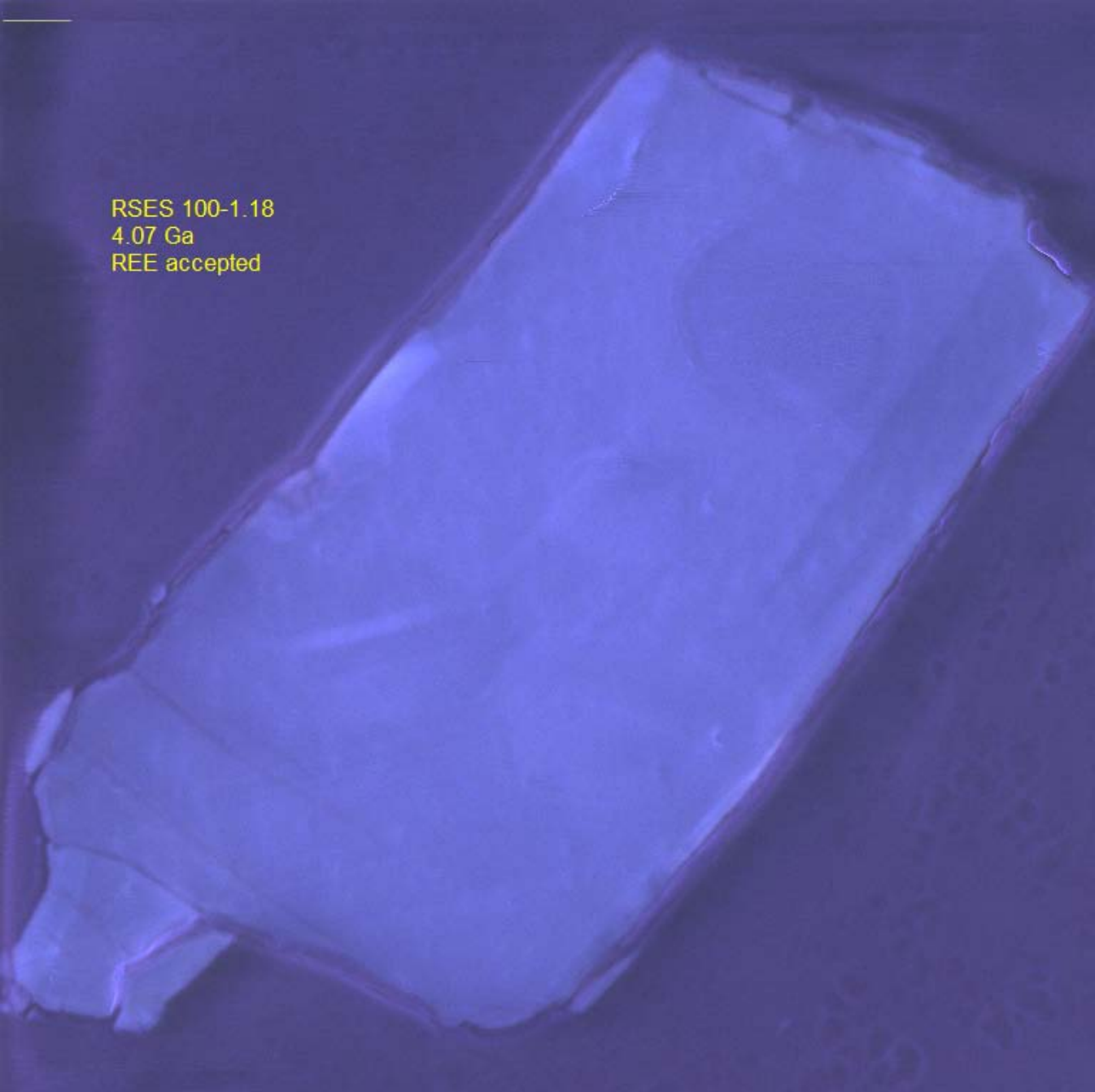
SEM HV: 20.0 kV  
View field: 280  $\mu$ m

WD: 17.25 mm  
Det: Color CL

  
50  $\mu$ m

VEGA3 TESCAN  
UCLA - EPSS

RSES 100-1.18  
4.07 Ga  
REE accepted



SEM HV: 20.0 kV

WD: 17.23 mm

View field: 200  $\mu$ m

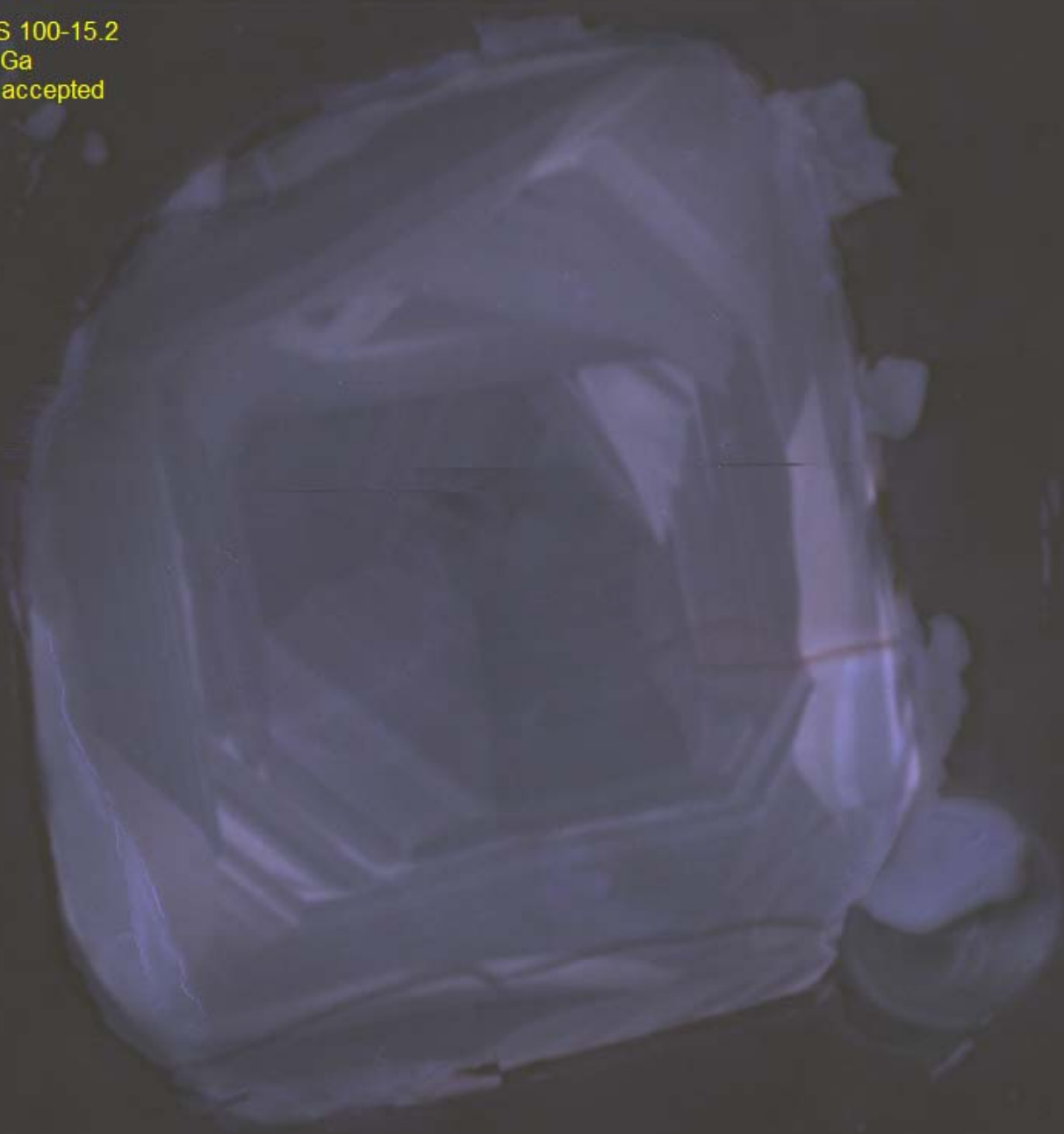
Det: Color CL

50  $\mu$ m

VEGA3 TESCAN

UCLA - EPSS

RSES 100-15.2  
4.09 Ga  
REE accepted



SEM HV: 20.0 kV

WD: 17.30 mm

View field: 183 μm

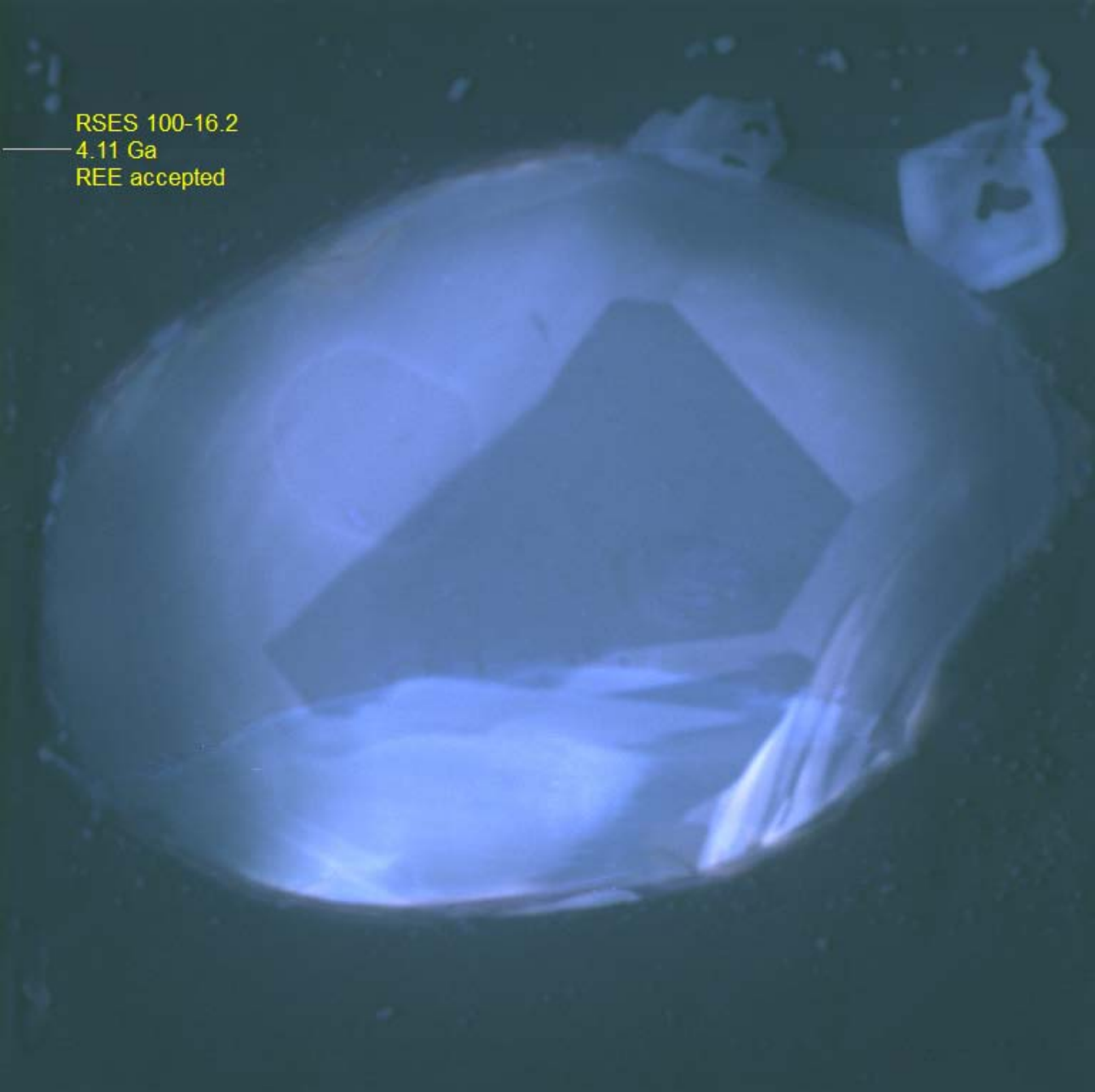
Det: Color CL

50 μm

VEGA3 TESCAN

UCLA - EPSS

RSES 100-16.2  
4.11 Ga  
REE accepted



SEM HV: 20.0 kV

WD: 17.15 mm

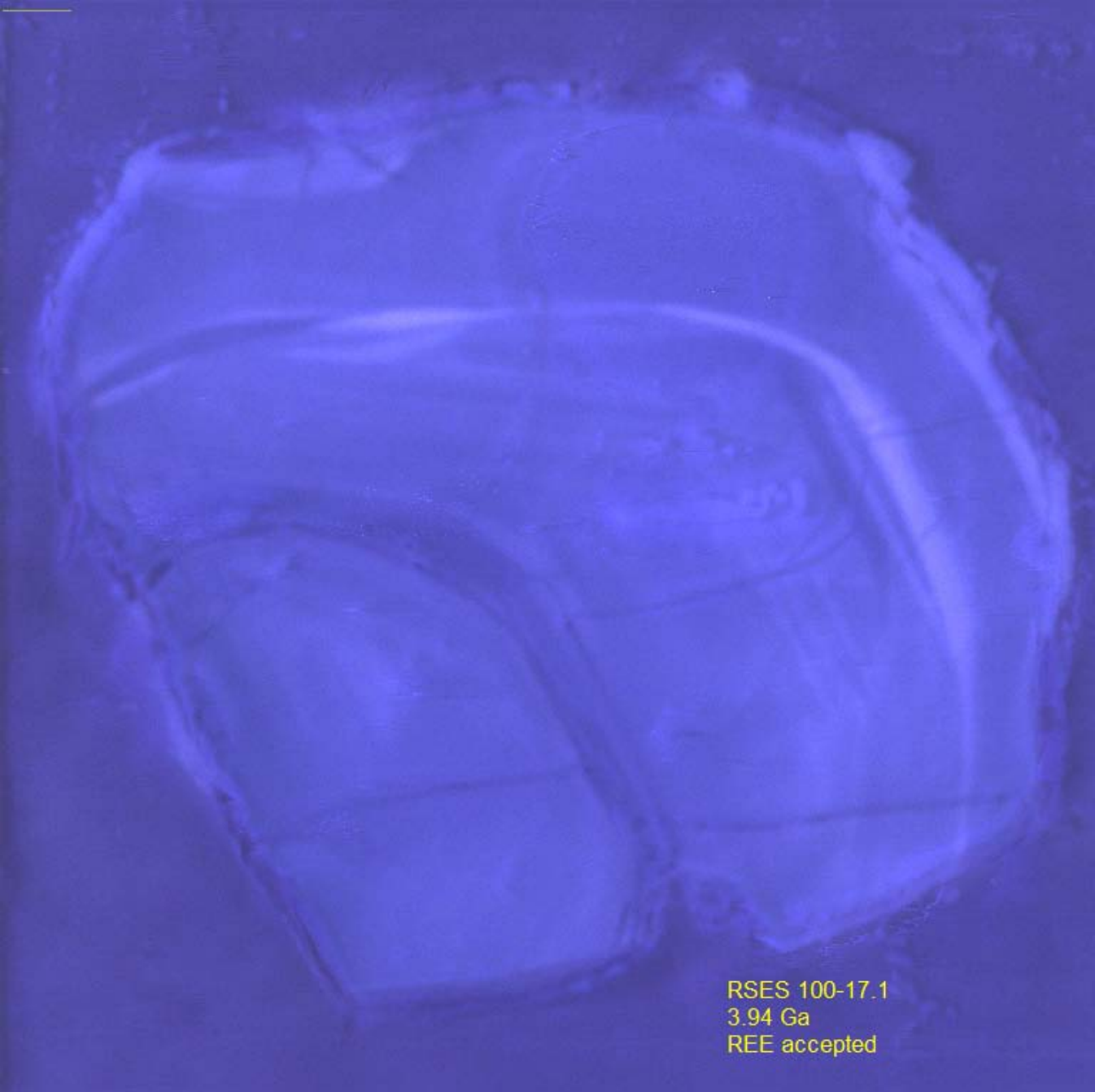
View field: 218  $\mu$ m

Det: Color CL

50  $\mu$ m

VEGA3 TESCAN

UCLA - EPSS



RSES 100-17.1  
3.94 Ga  
REE accepted

SEM HV: 20.0 kV

WD: 17.31 mm



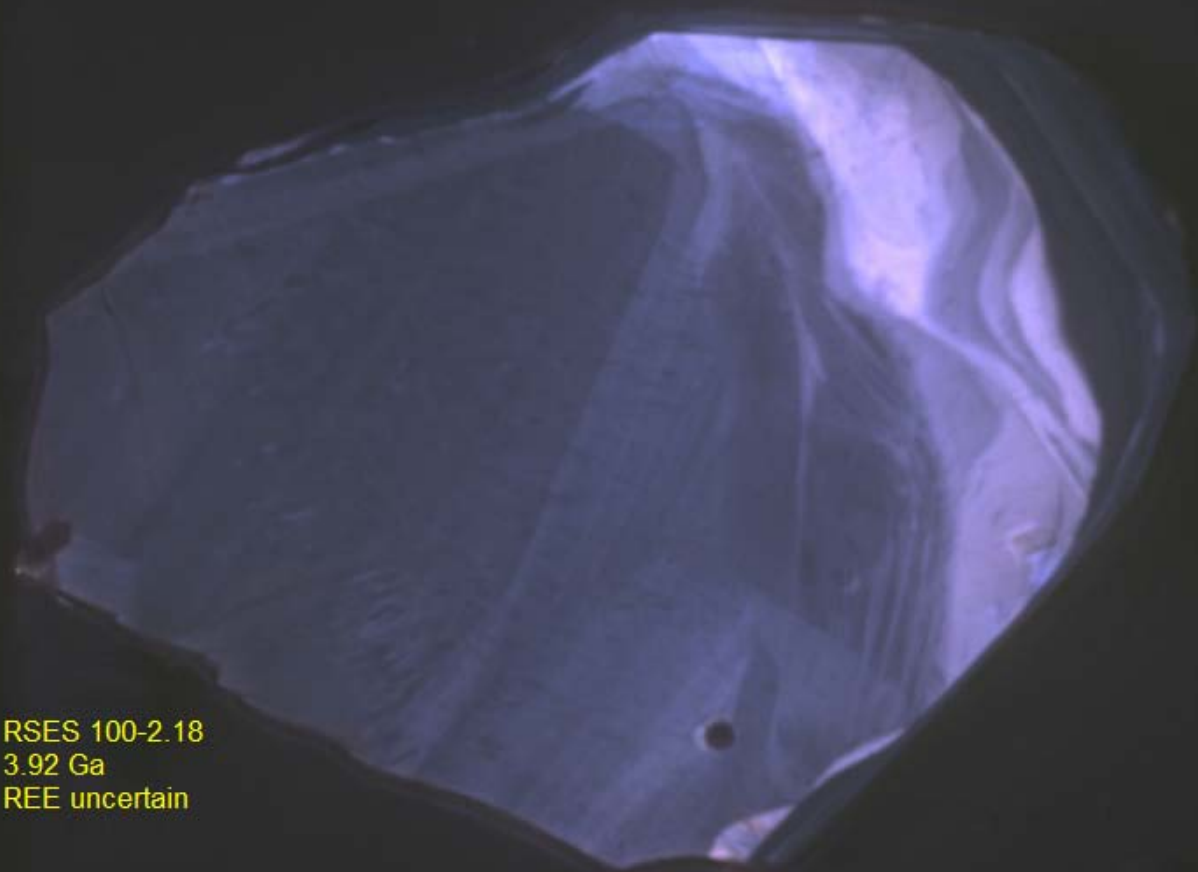
VEGA3 TESCAN

View field: 148 µm

Det: Color CL

20 µm

UCLA - EPSS



RSES 100-2.18  
3.92 Ga  
REE uncertain

SEM HV: 20.0 kV

WD: 17.41 mm



VEGA3 TESCAN

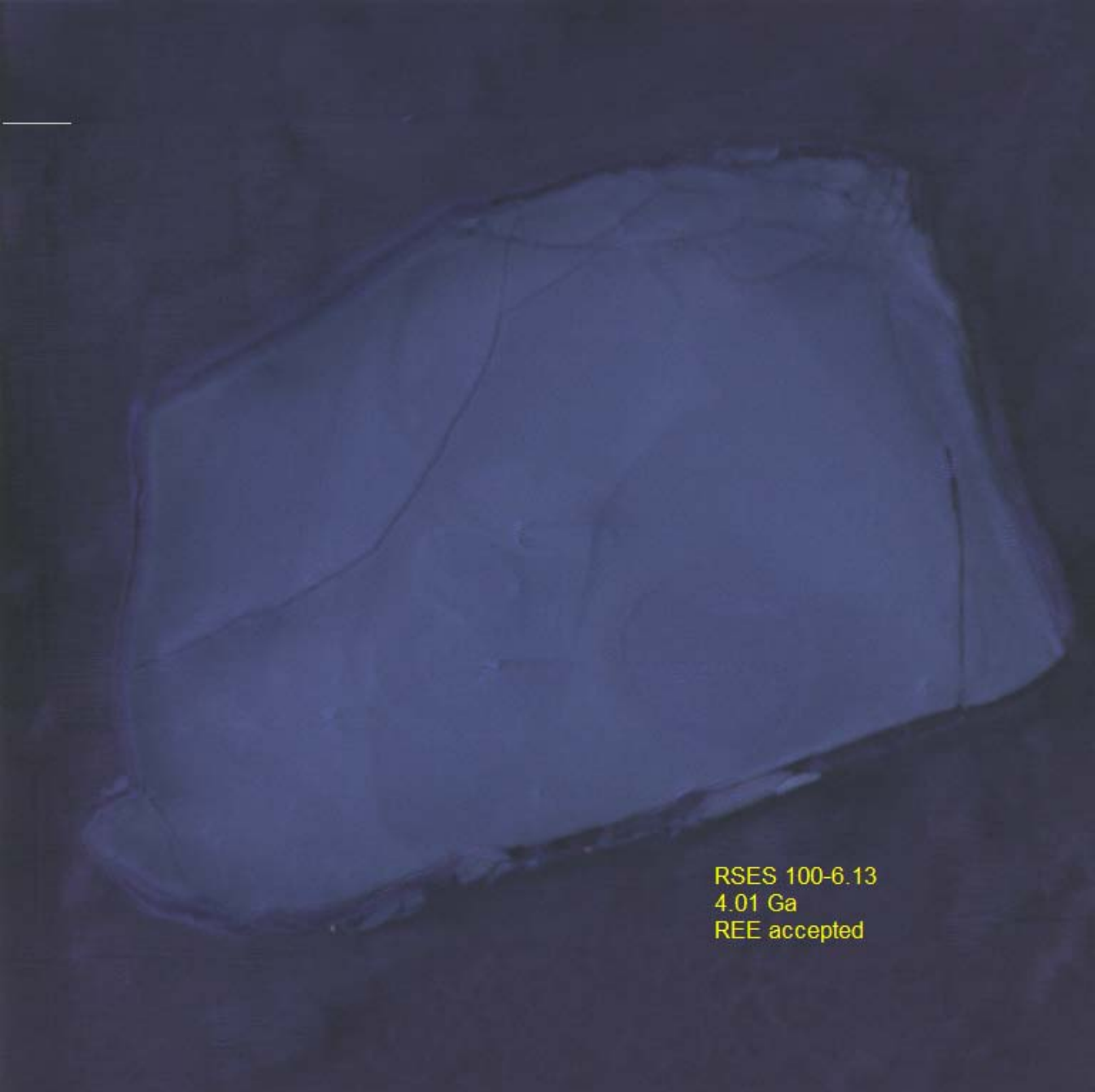
View field: 309  $\mu$ m

Det: Color CL

50  $\mu$ m

UCLA - EPSS





RSES 100-6.13  
4.01 Ga  
REE accepted

SEM HV: 20.0 kV

WD: 17.25 mm



VEGA3 TESCAN

View field: 233  $\mu$ m

Det: Color CL

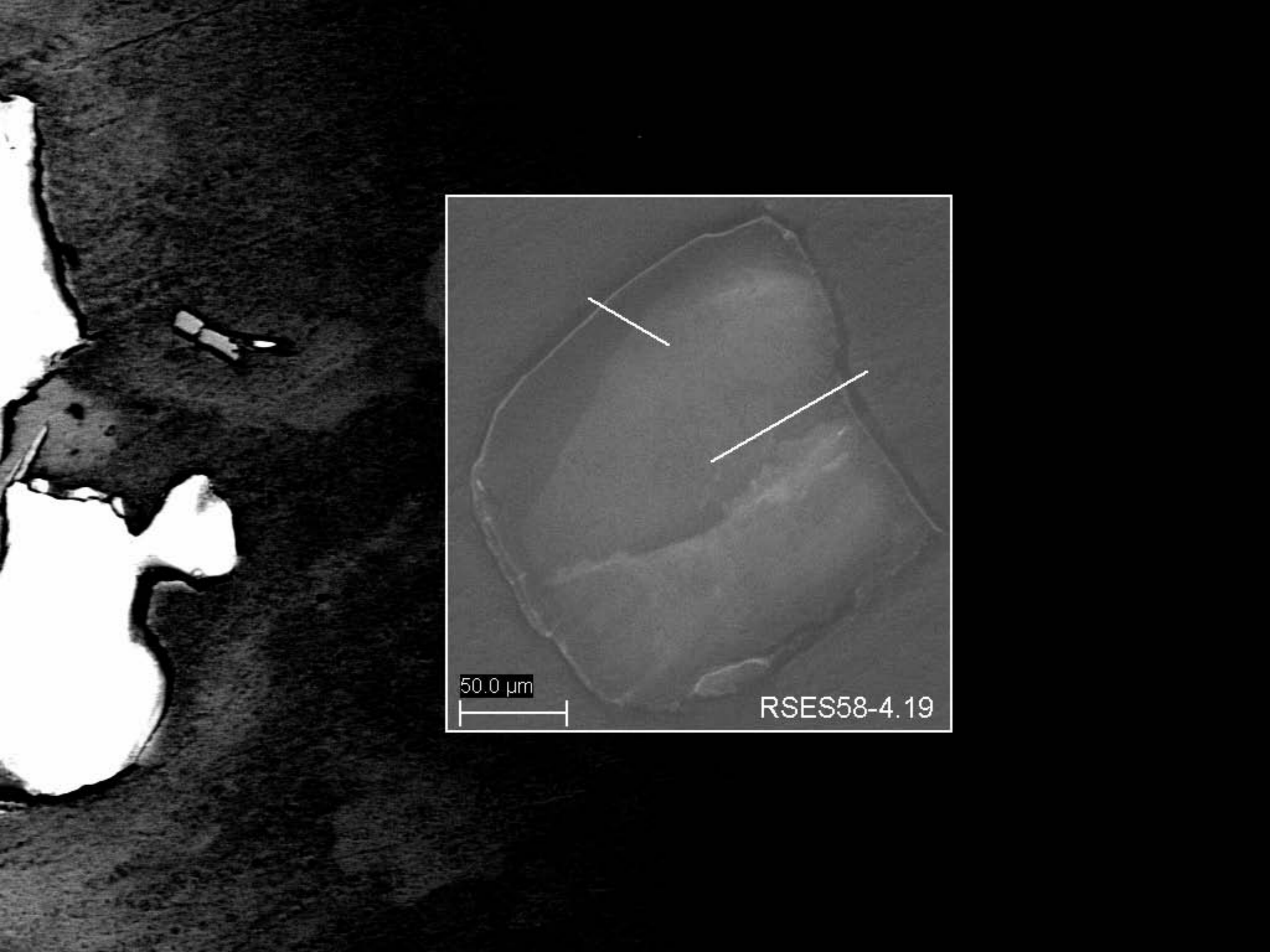
50  $\mu$ m

UCLA - EPSS

RSES58-3.4

100.0  $\mu\text{m}$



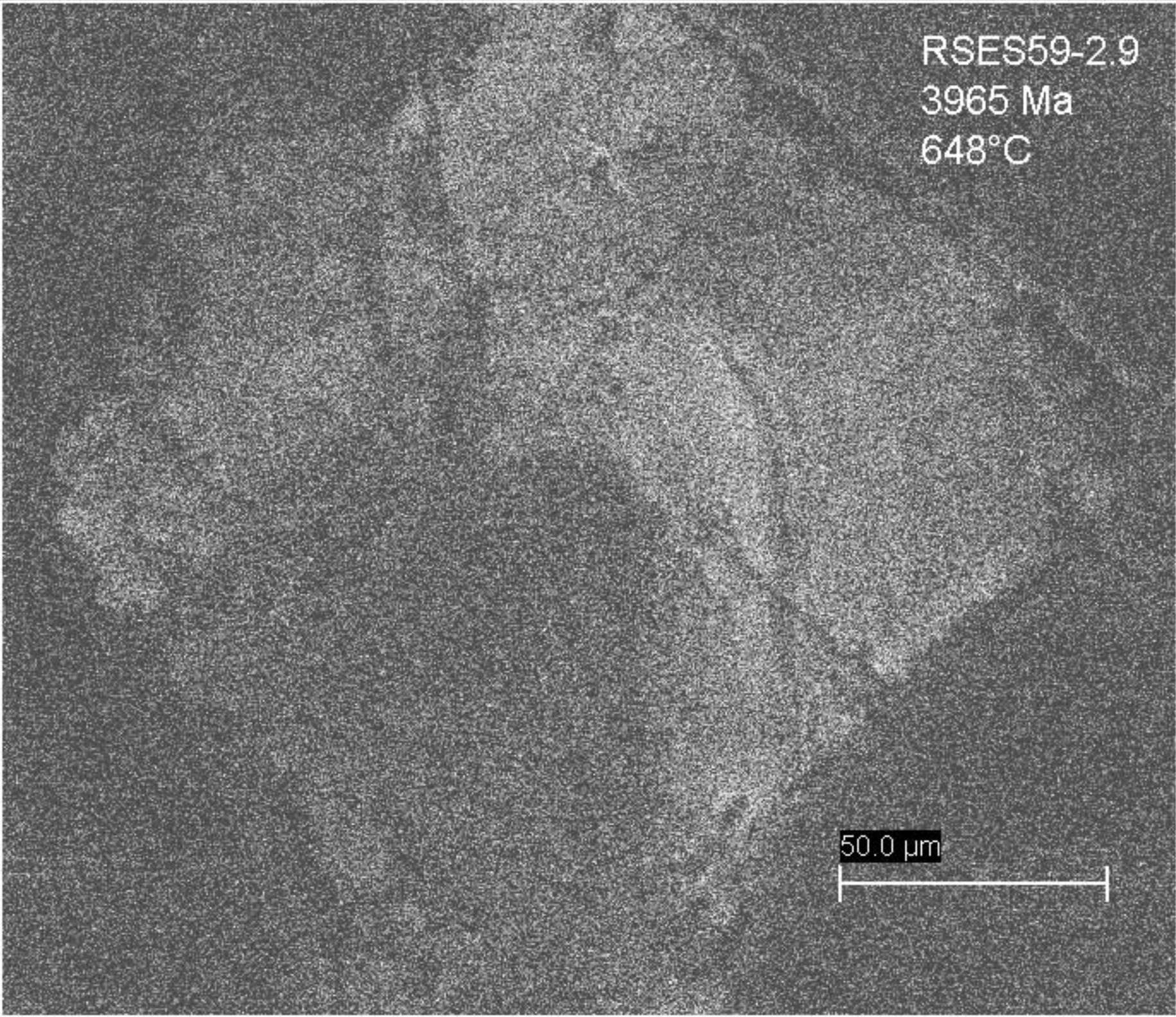


50.0 μm

RSES58-4.19

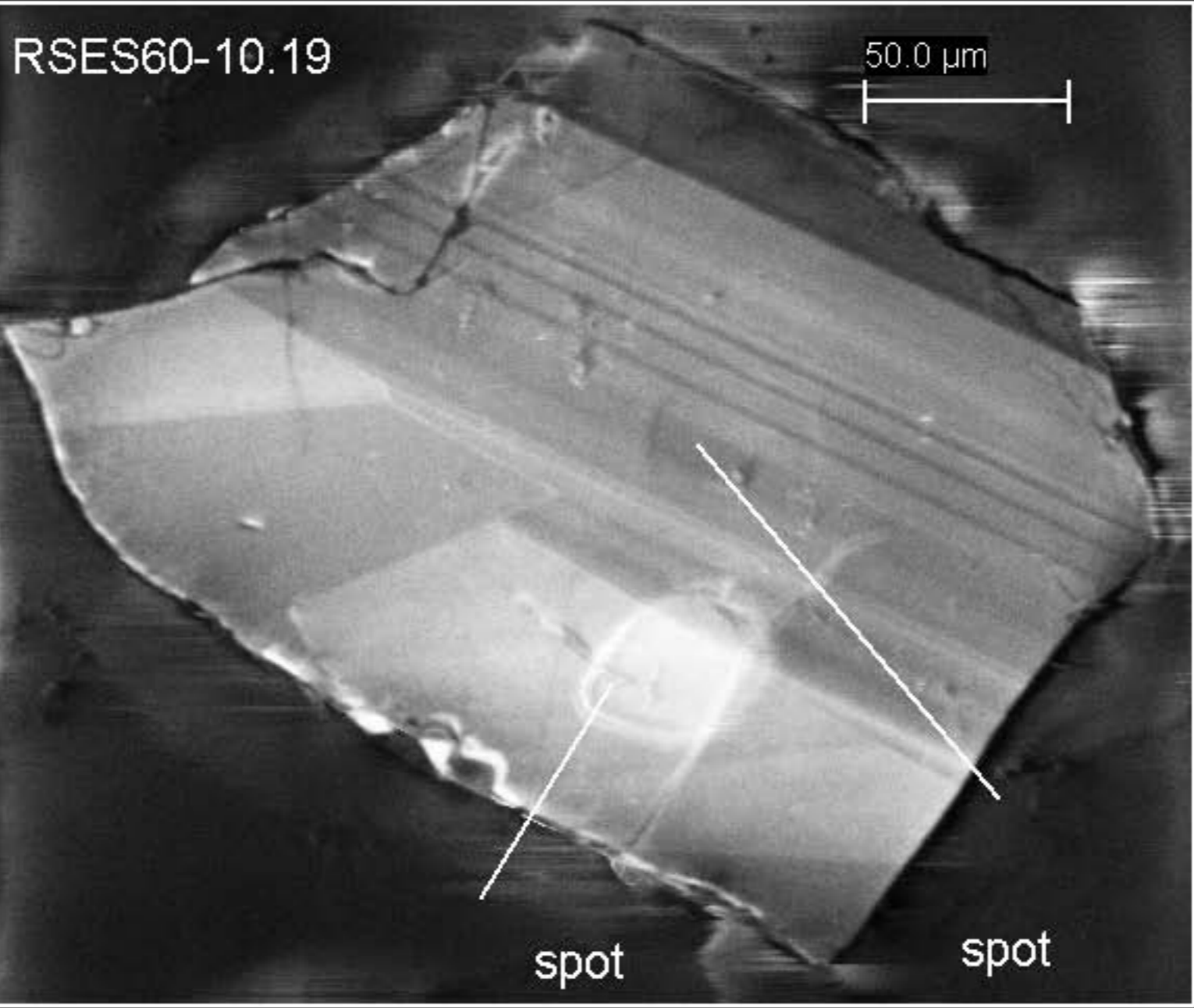
RSES59-2.9  
3965 Ma  
648°C

50.0  $\mu\text{m}$



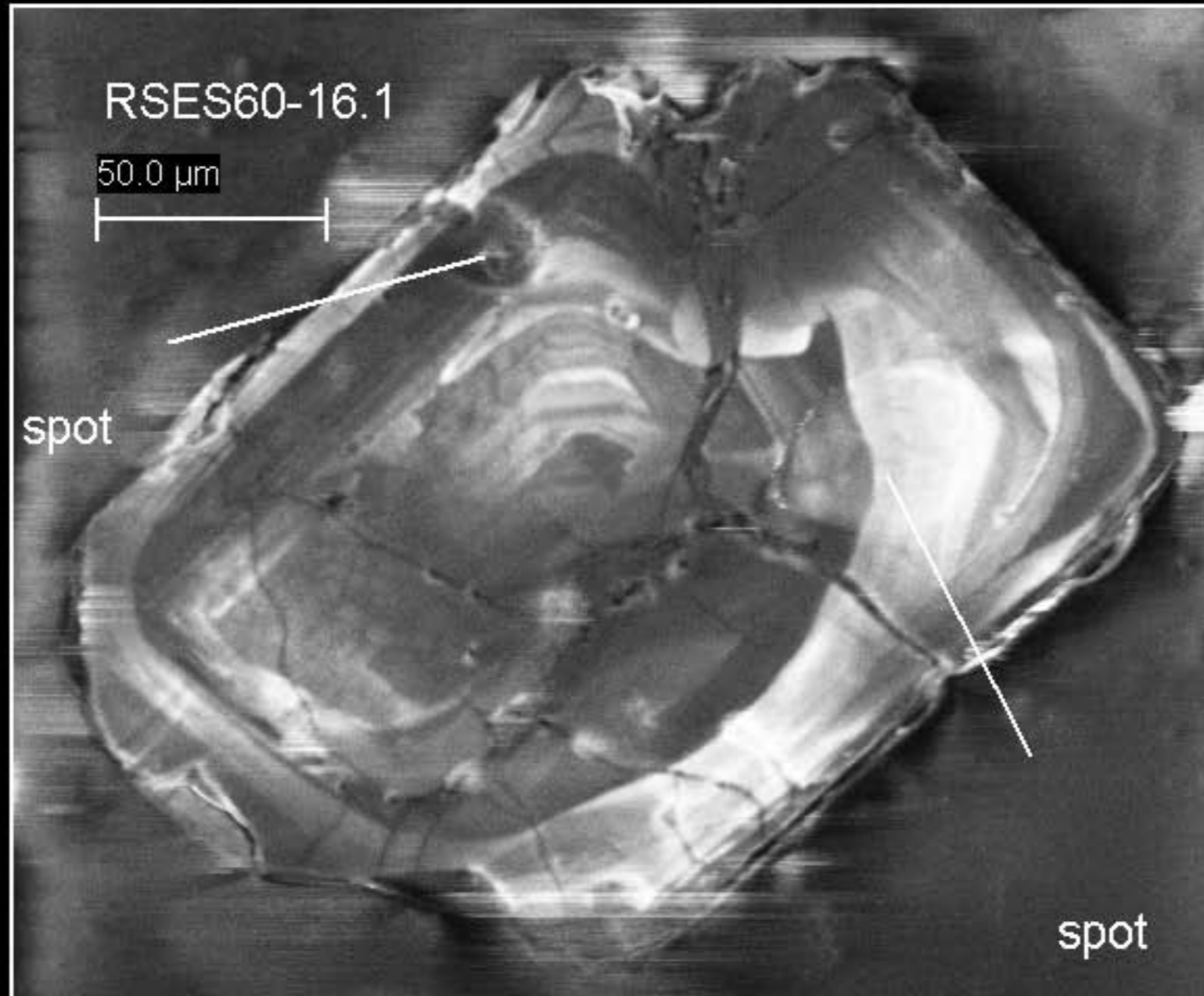
RSES60-10.19

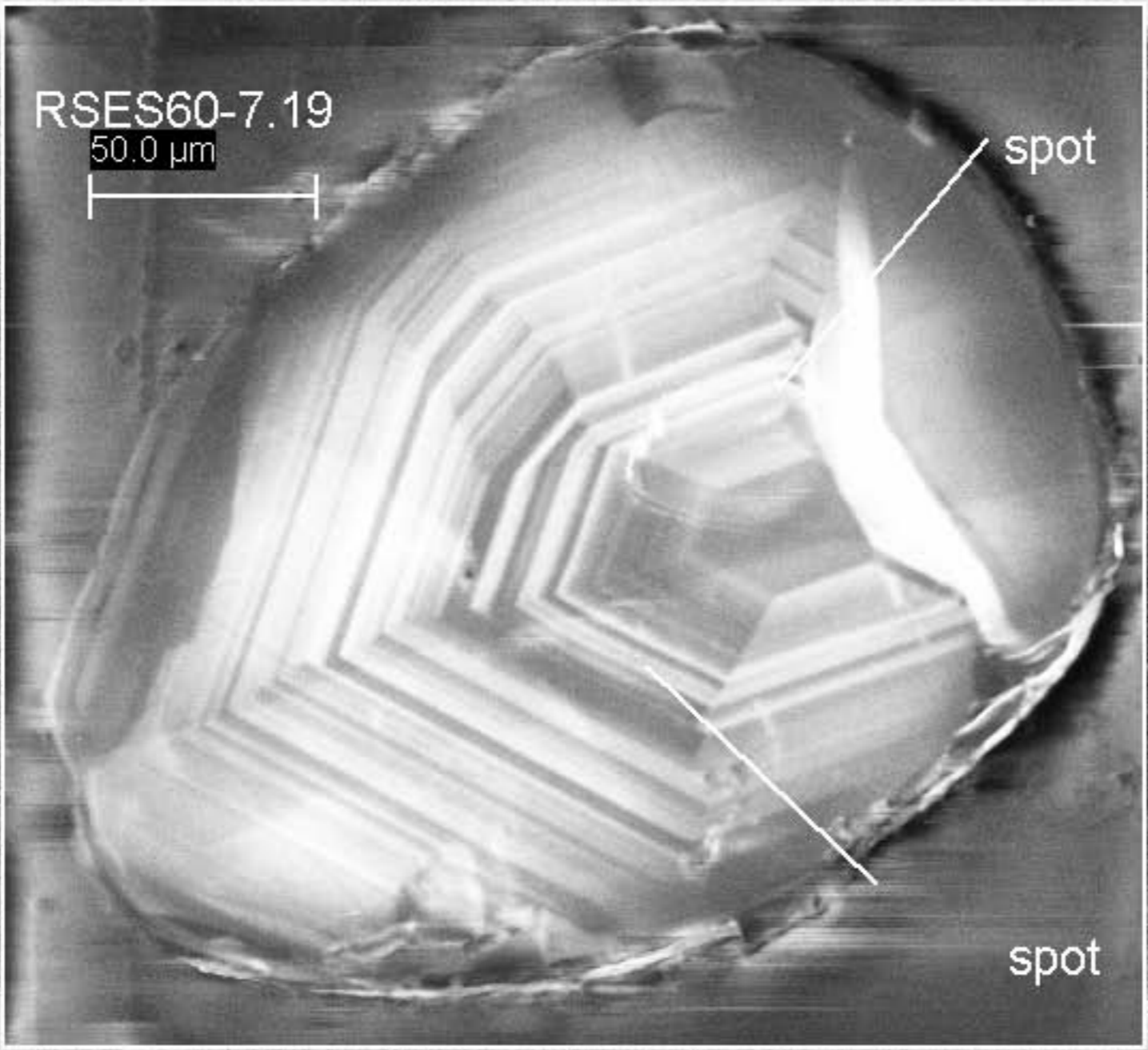
50.0  $\mu\text{m}$



spot

spot





RSES60-7.19

50.0 μm

spot

spot