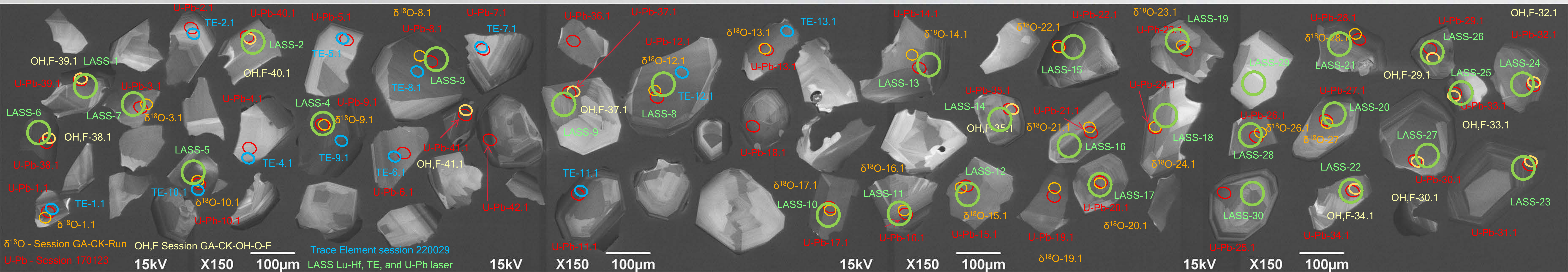
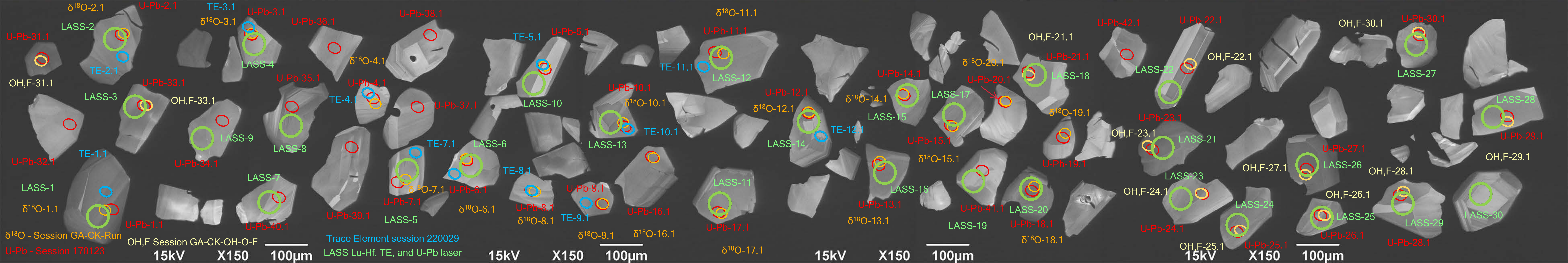
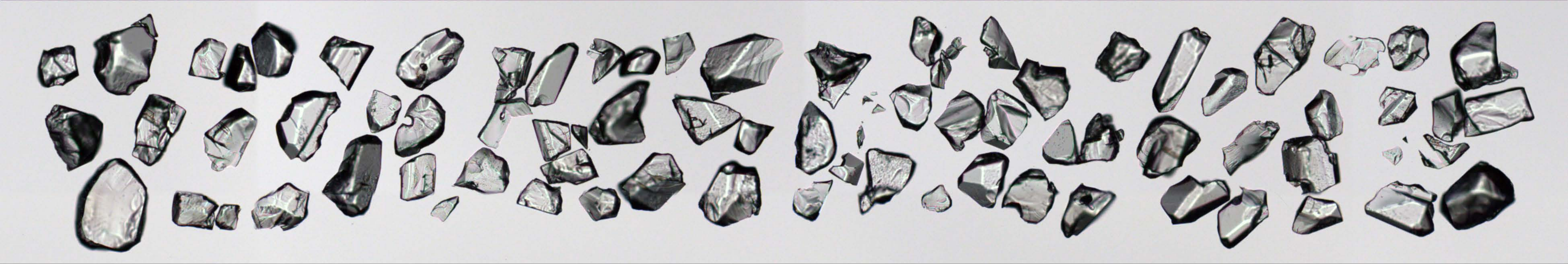


T2U: Untreated Temora 2



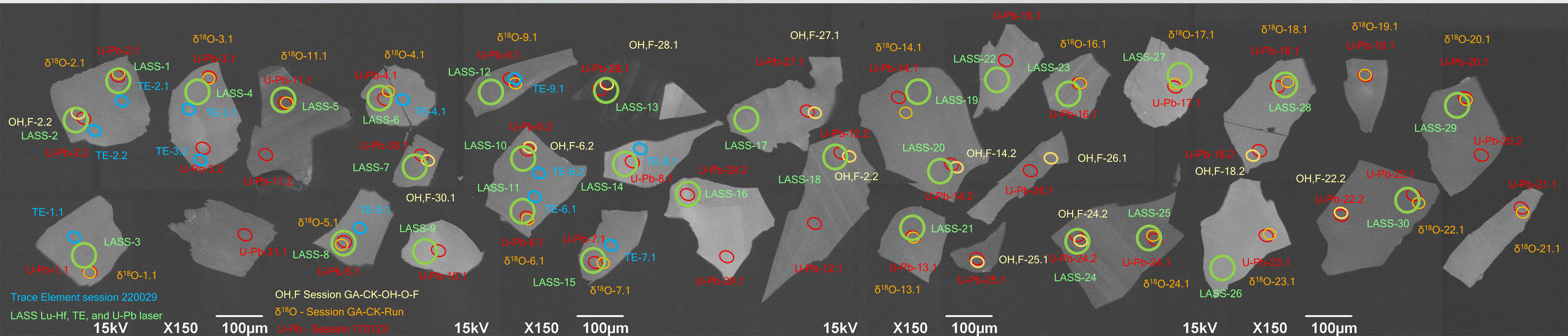
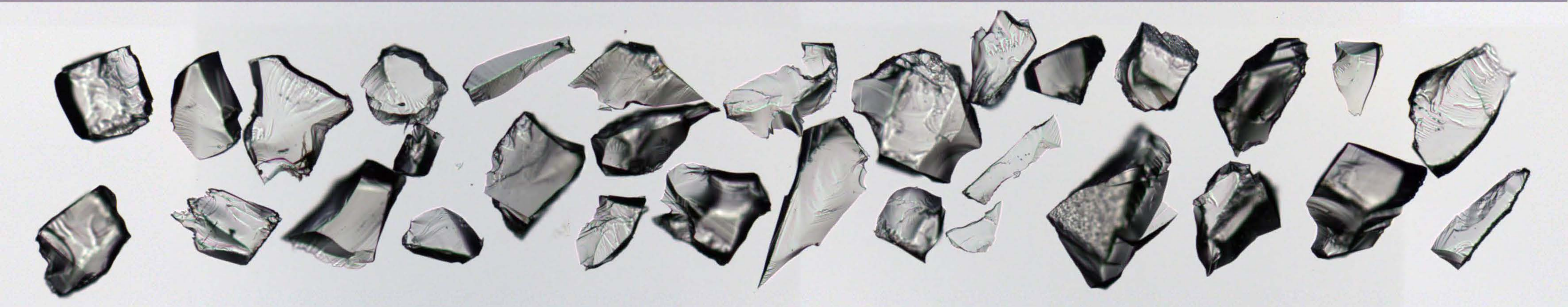



T2C: Chemically abraded Temora 2



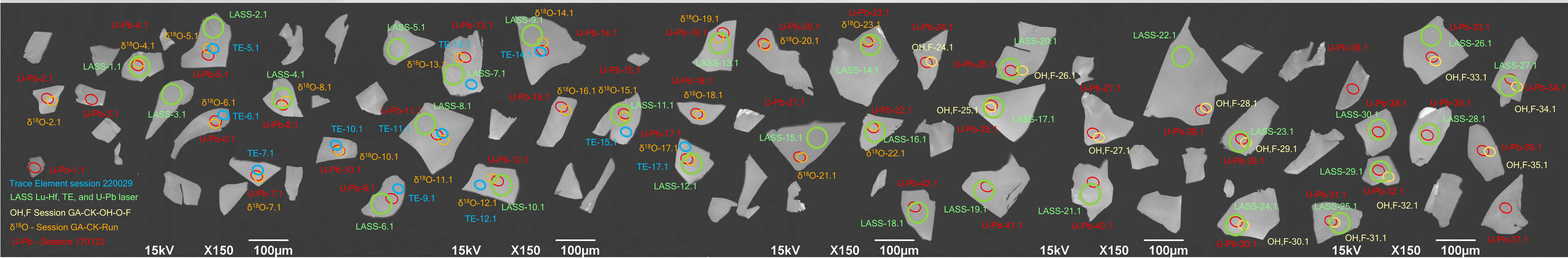
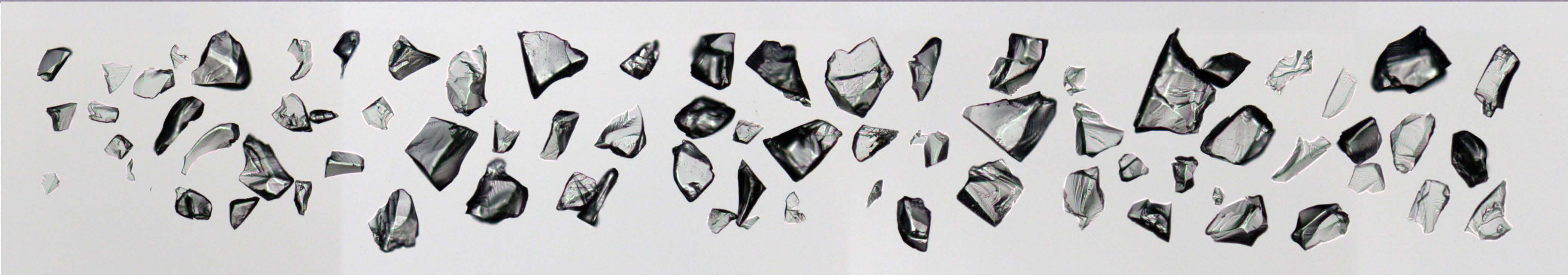
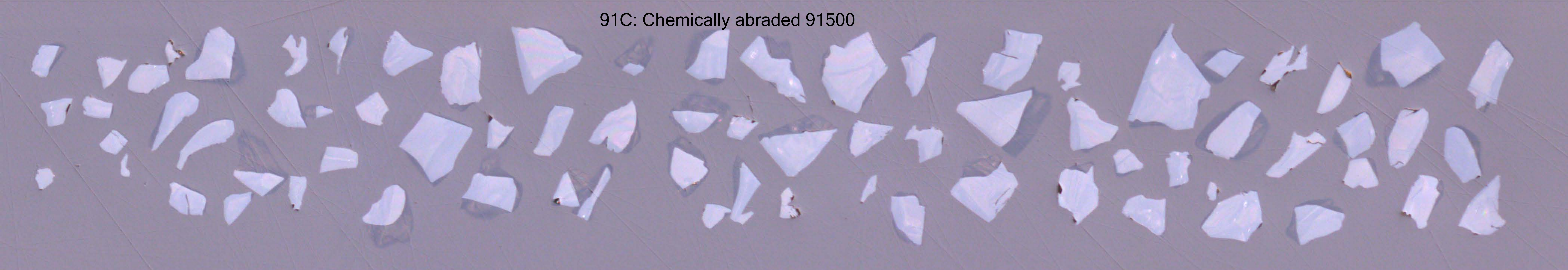


91U: Untreated 91500



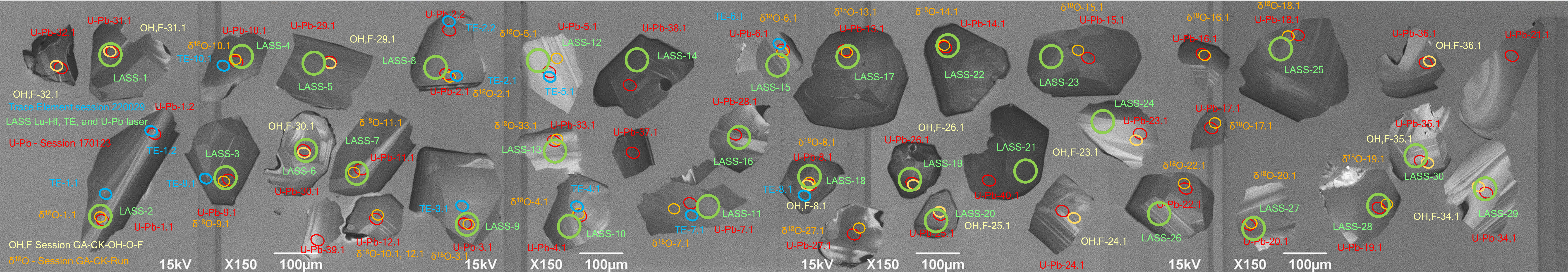
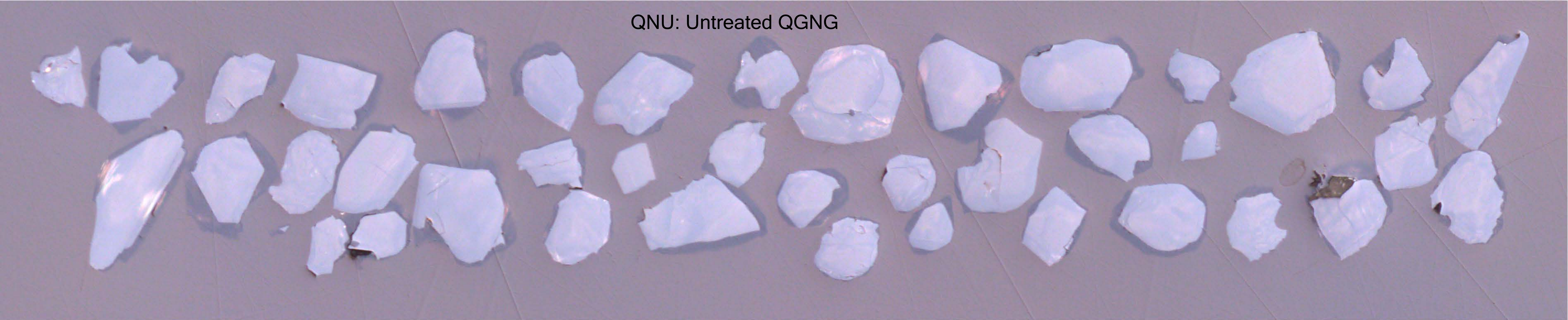


91C: Chemically abraded 91500



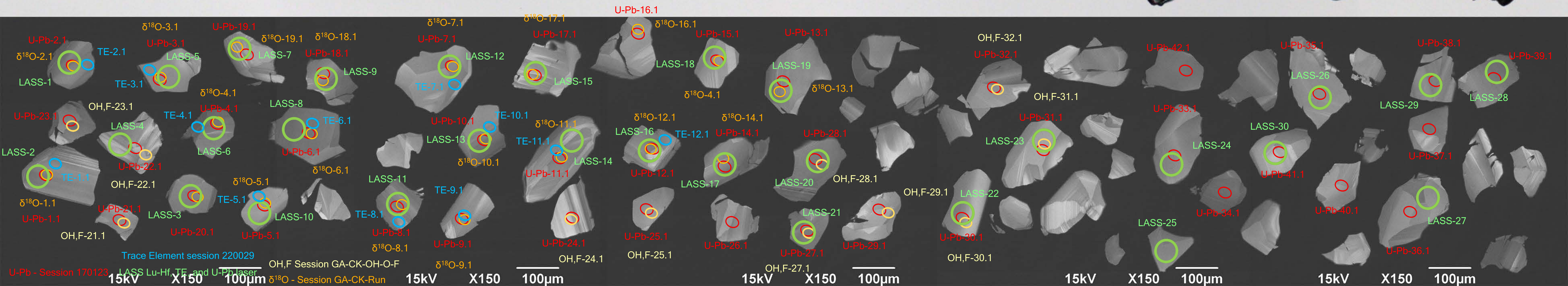
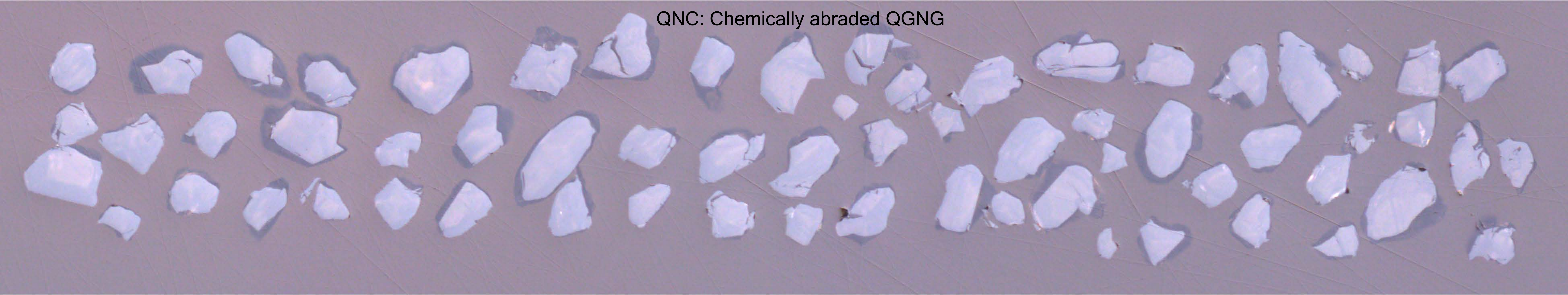


QNU: Untreated QGNG





QNC: Chemically abraded QGNG

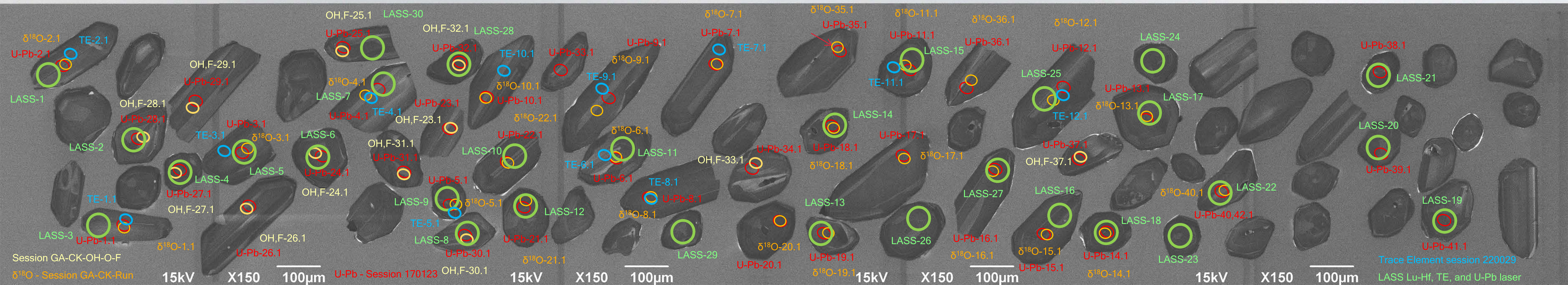




OGU: Untreated OG1



This micrograph shows a large number of untreated OG1 particles. The particles are predominantly white and elongated, with some showing internal structure or surface texture. They are distributed across the field of view, with a higher density in the center and fewer towards the edges. The background is a uniform light gray.





OGC: Chemically Abraded OG1

