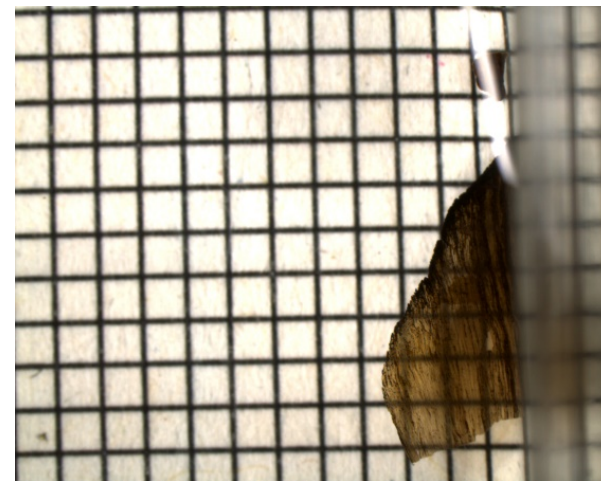


BE-9791.1.1



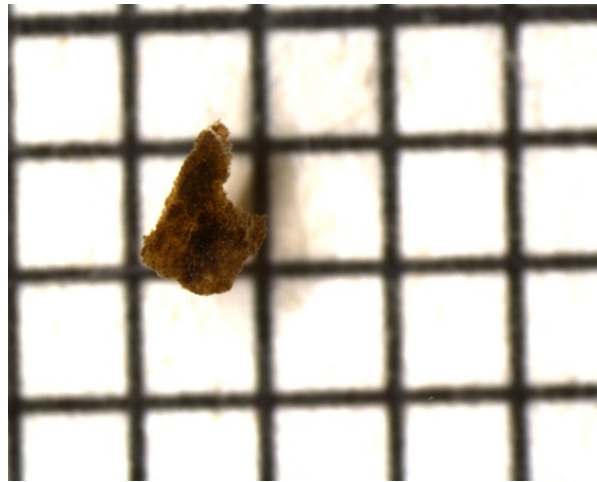
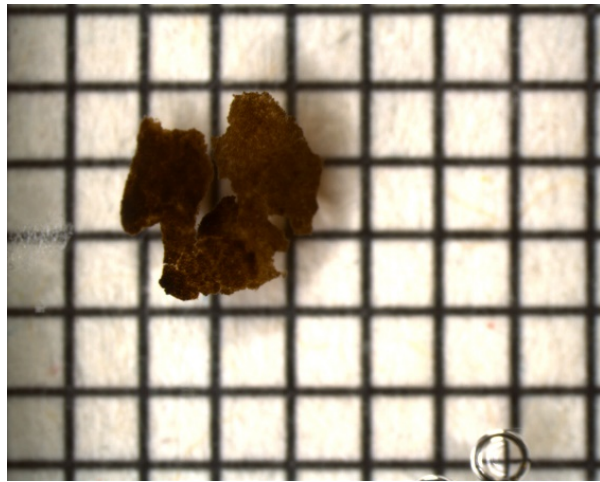
*Note: 1 square in image background is equivalent to 1 mm*

BE-9793.1.1



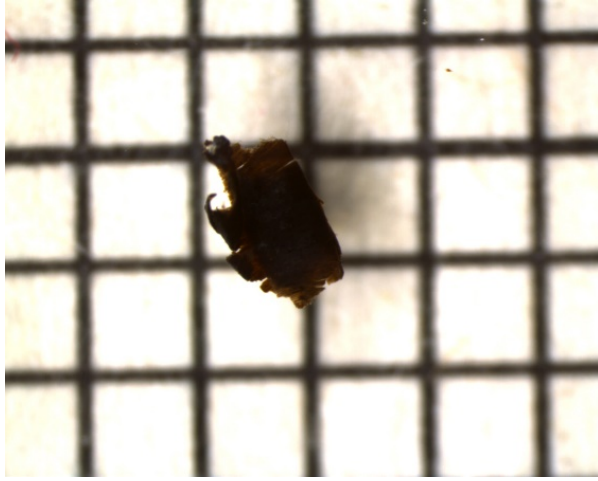
*Note: 1 square in image background is equivalent to 1 mm*

BE-9792.1.1



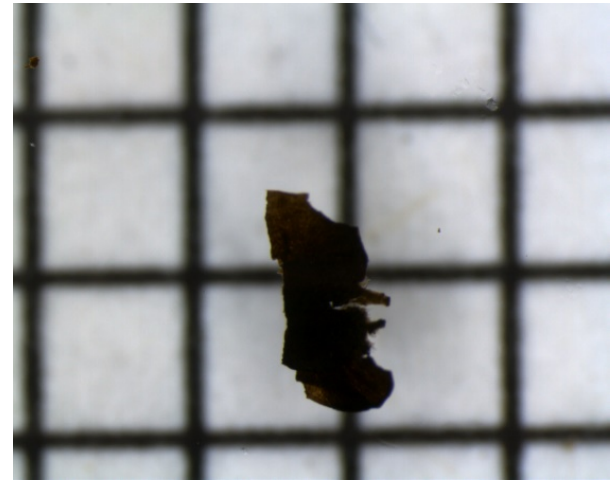
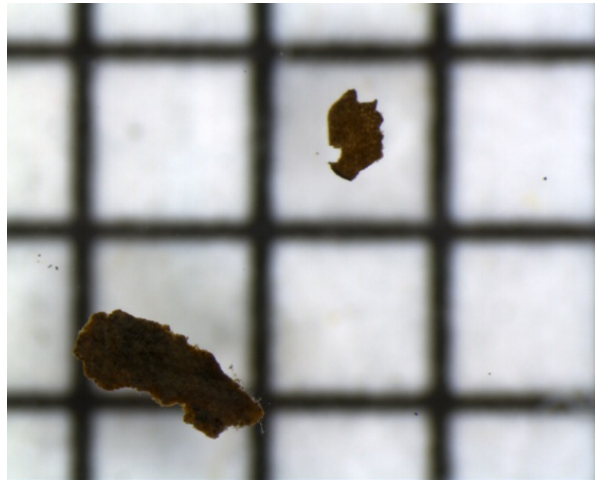
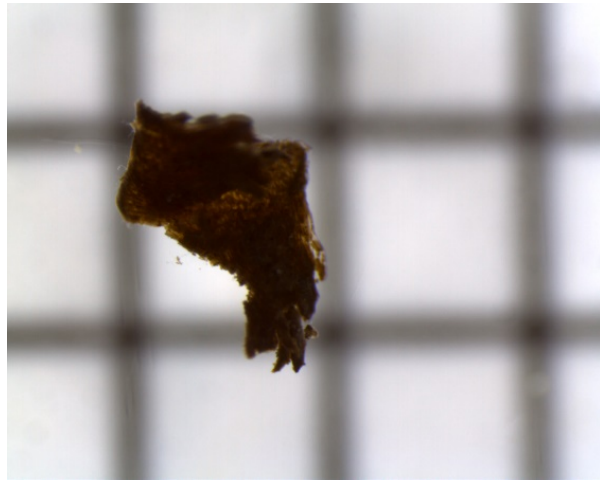
*Note: 1 square in image background is equivalent to 1 mm*

BE-9794.1.1



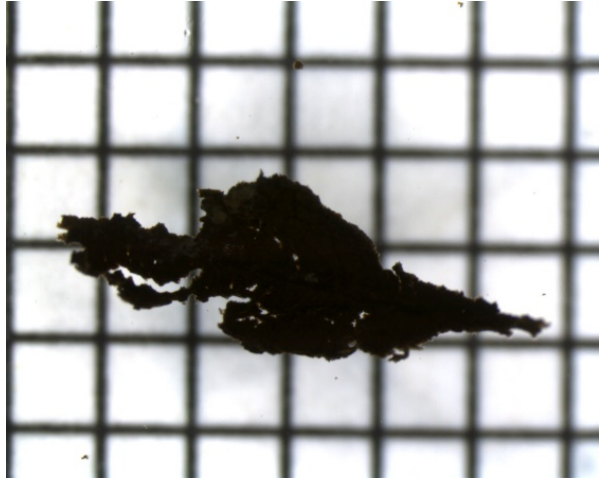
*Note: 1 square in image background is equivalent to 1 mm*

BE-9503.1.1



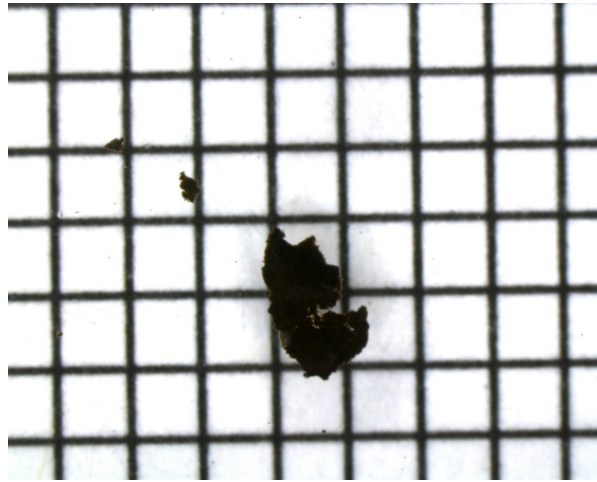
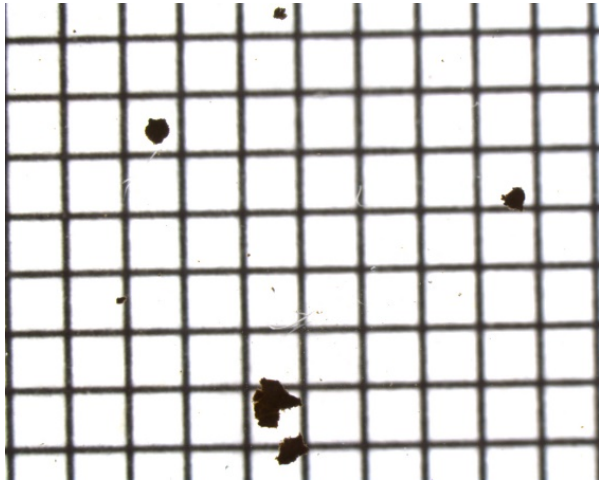
*Note: 1 square in image background is equivalent to 1 mm*

BE-9502.1.2 and BE-9502.1.1



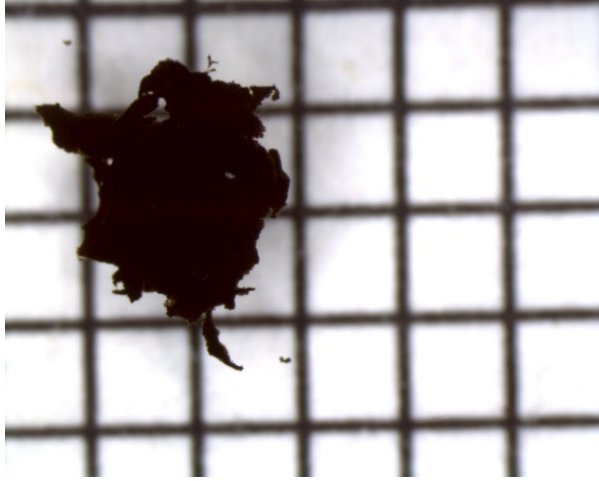
*Note: 1 square in image background is equivalent to 1 mm*

BE-9501.1.1



*Note: 1 square in image background is equivalent to 1 mm*

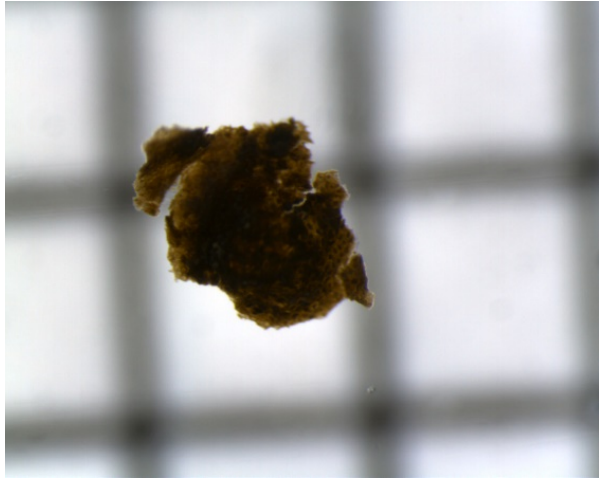
BE-9494.1.2



*Note: 1 square in image background is equivalent to 1 mm*

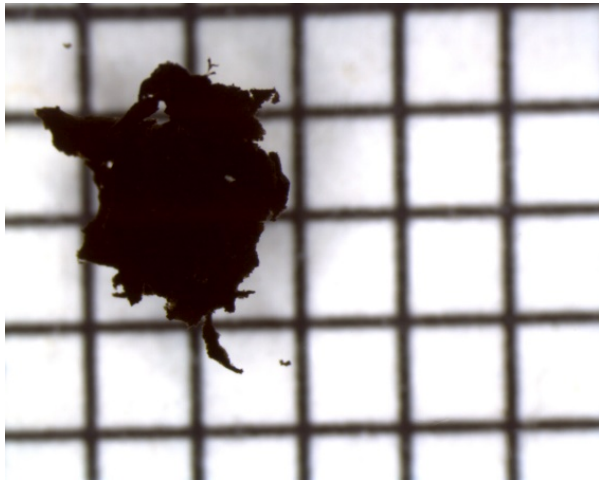


BE-9495.1.1



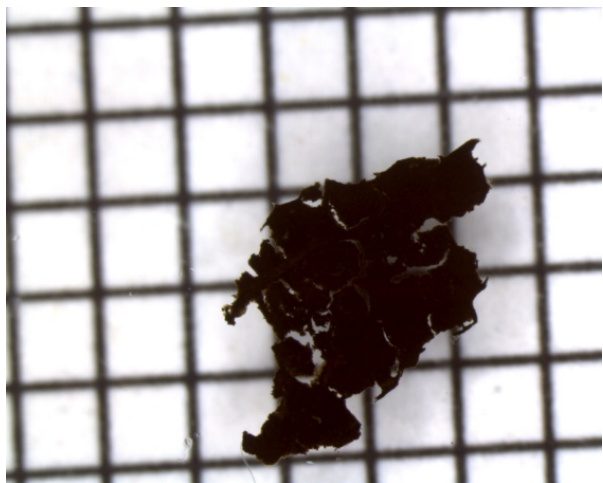
*Note: 1 square in image background is equivalent to 1 mm*

BE-9494.1.3



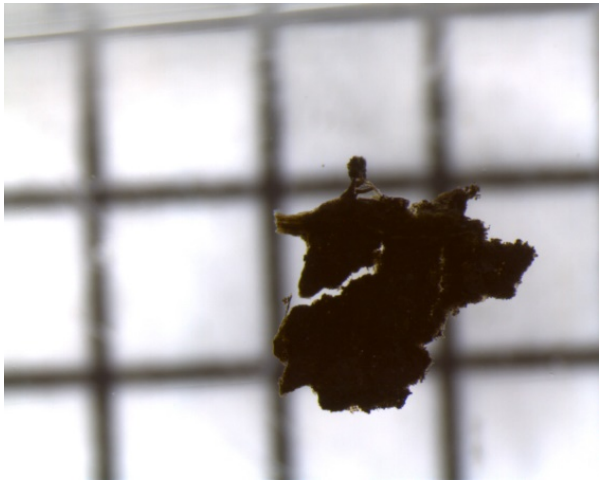
*Note: 1 square in image background is equivalent to 1 mm*

BE-9494.1.2



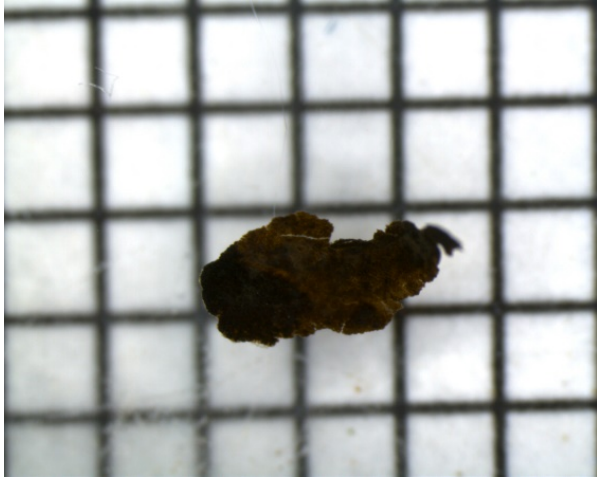
*Note: 1 square in image background is equivalent to 1 mm*

BE-9494.1.1



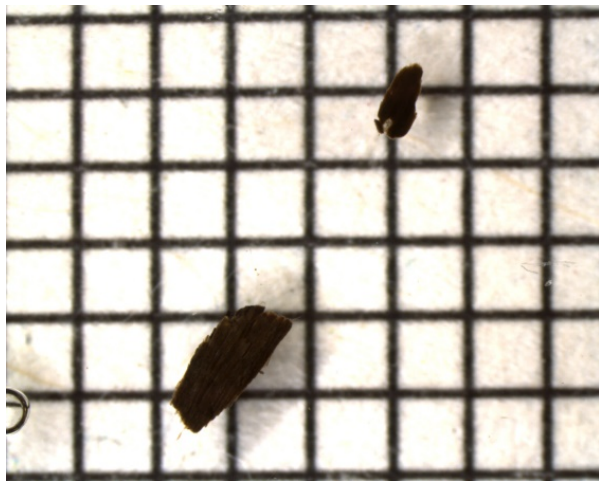
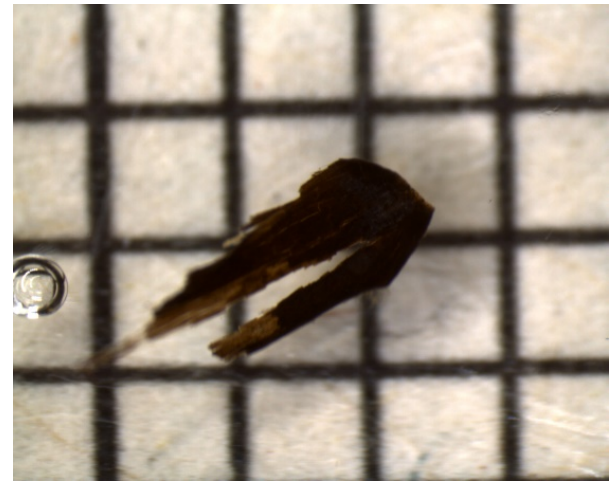
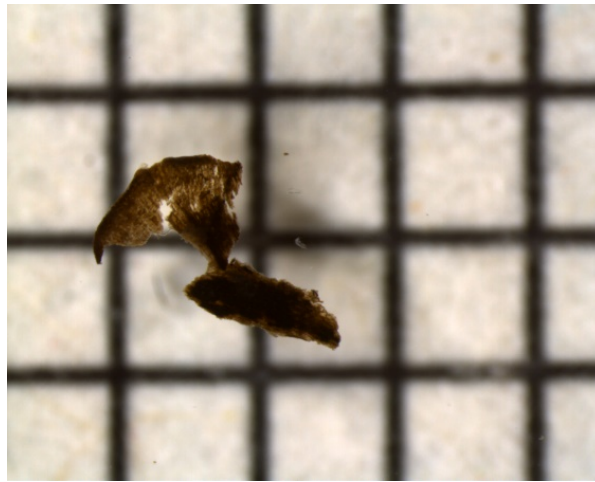
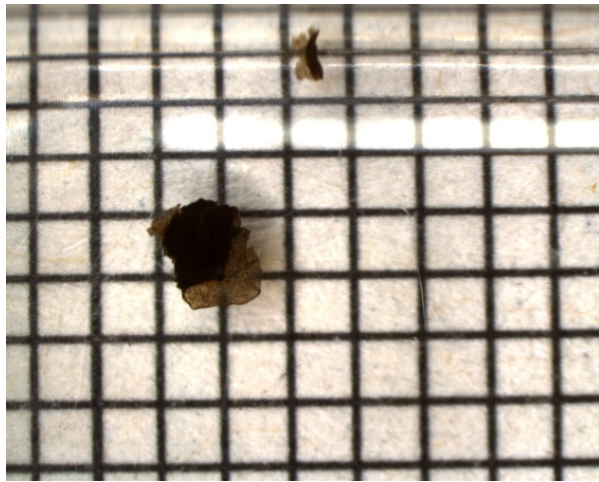
*Note: 1 square in image background is equivalent to 1 mm*

BE-9491.1.1



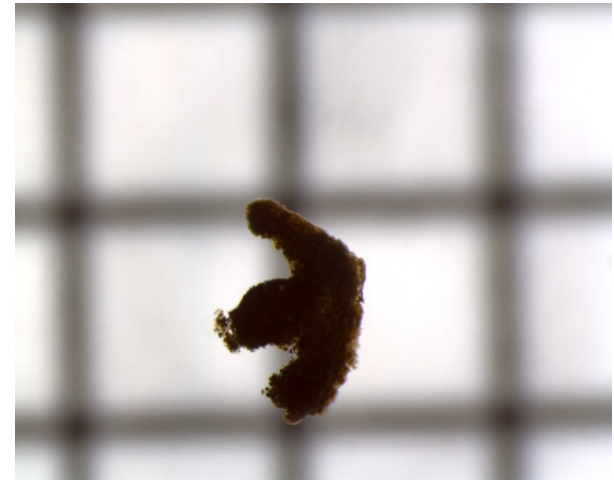
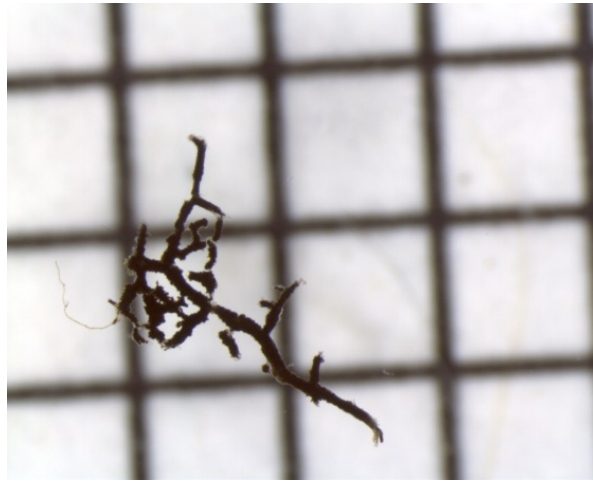
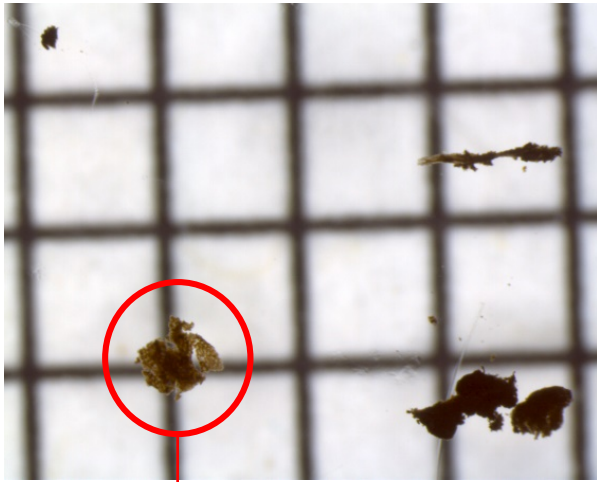
*Note: 1 square in image background is equivalent to 1 mm*

BE-9795.1.1



*Note: 1 square in image background is equivalent to 1 mm*

BE-9487.1.1

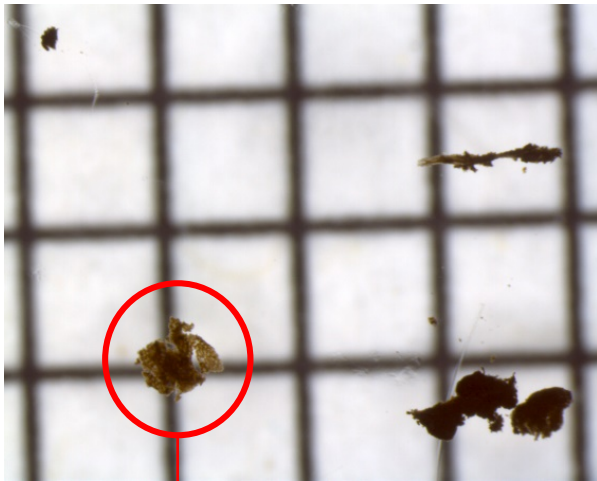


This fragment was analyzed as part of sample BE-9488.1.1

*Note: 1 square in image background is equivalent to 1 mm*



BE-9488.1.1

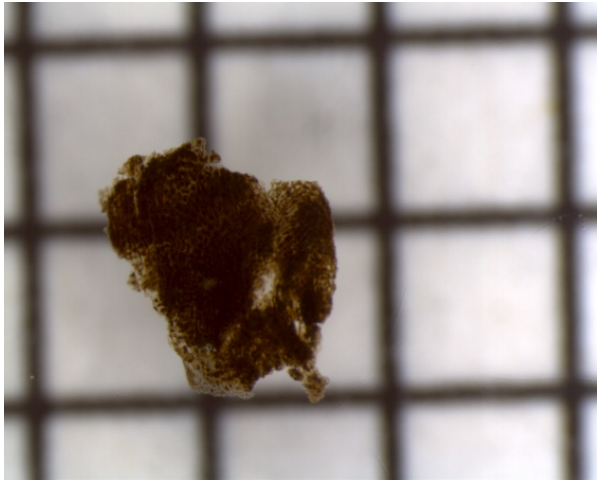
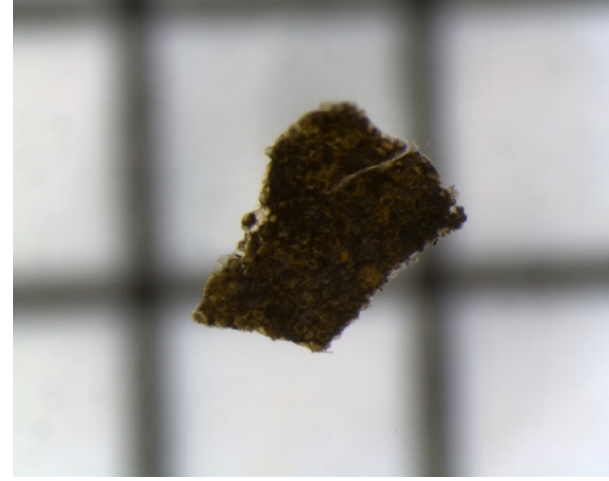
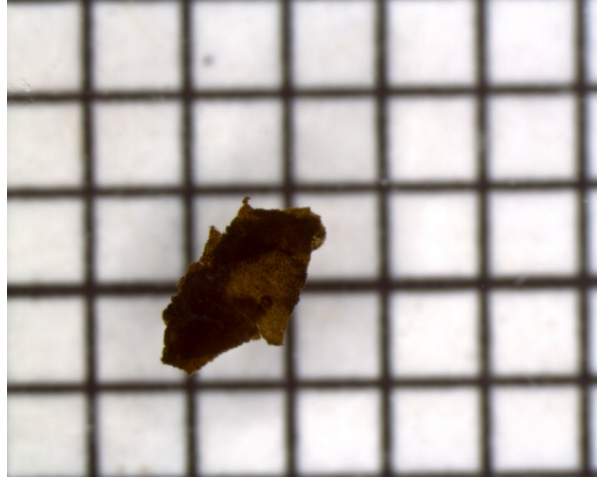
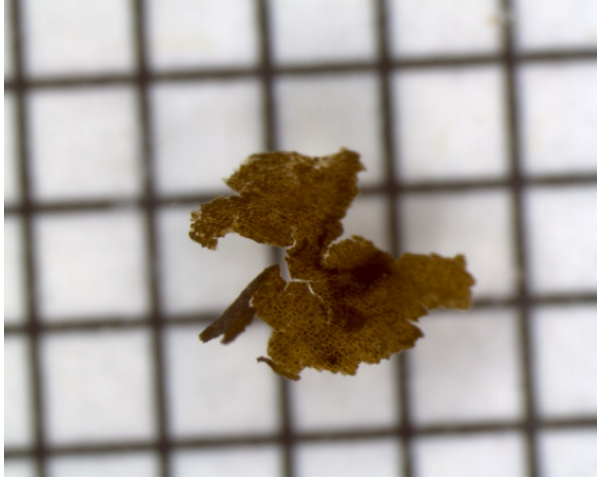


This fragment was analyzed as part of sample BE-9488.1.1. All other fragments in this image were analyzed in sample BE-9487.1.1

*Note: 1 square in image background is equivalent to 1 mm*

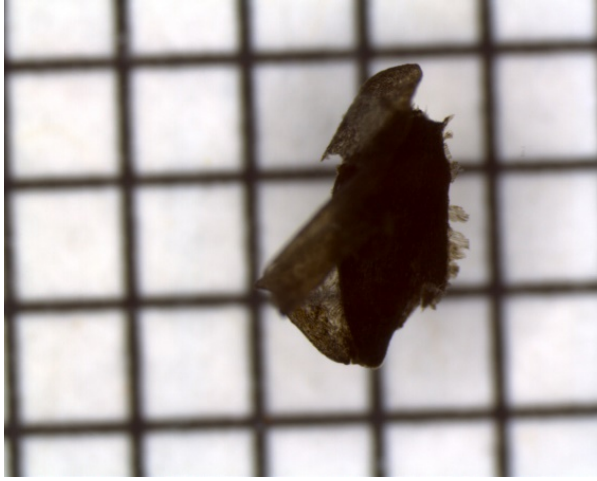


BE-9485.1.1



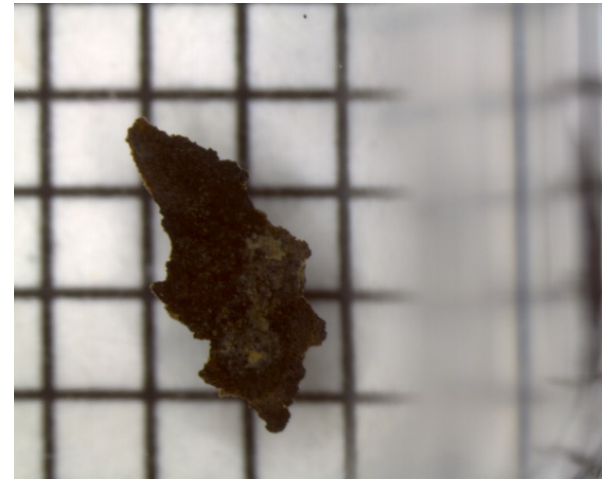
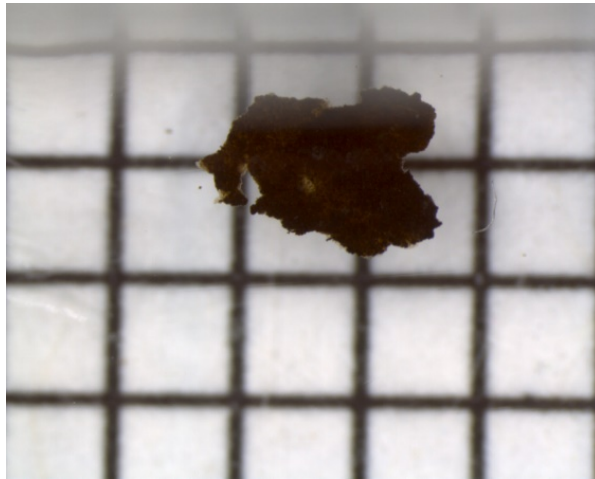
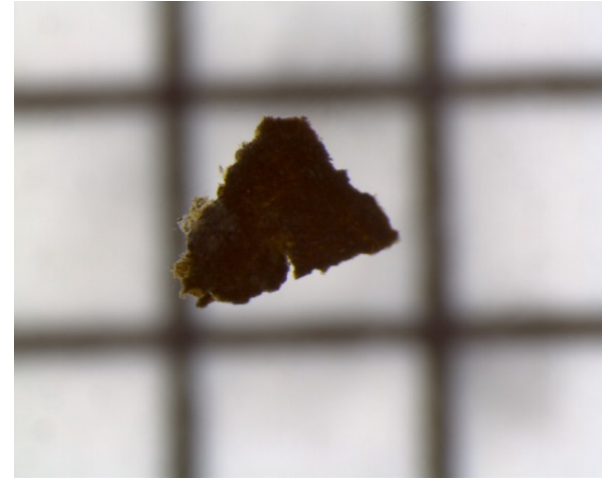
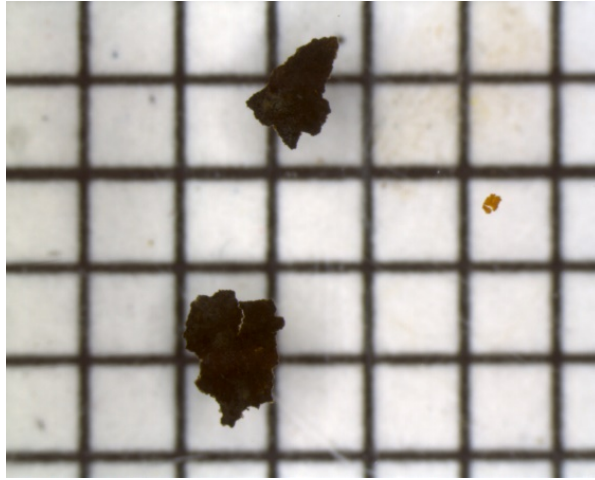
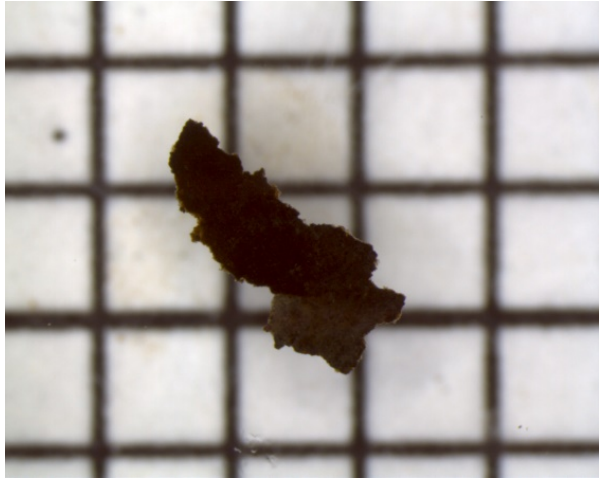
*Note: 1 square in image background is equivalent to 1 mm*

BE-9486.1.1



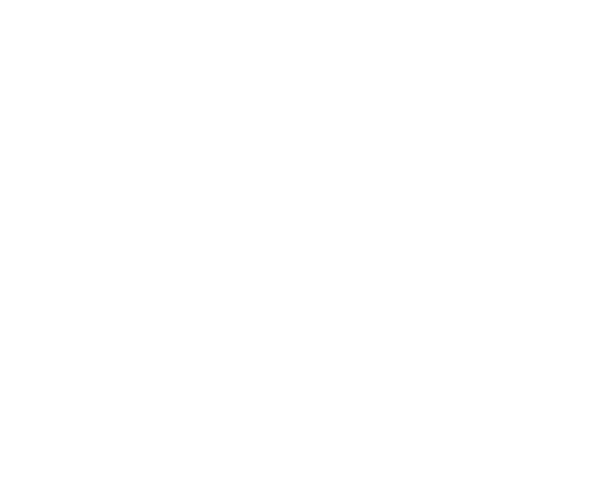
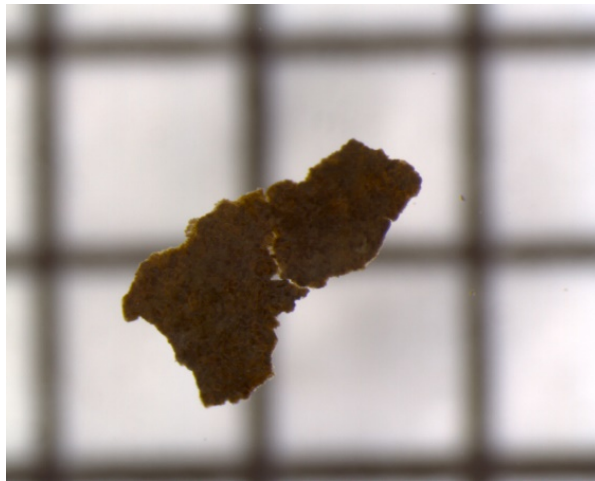
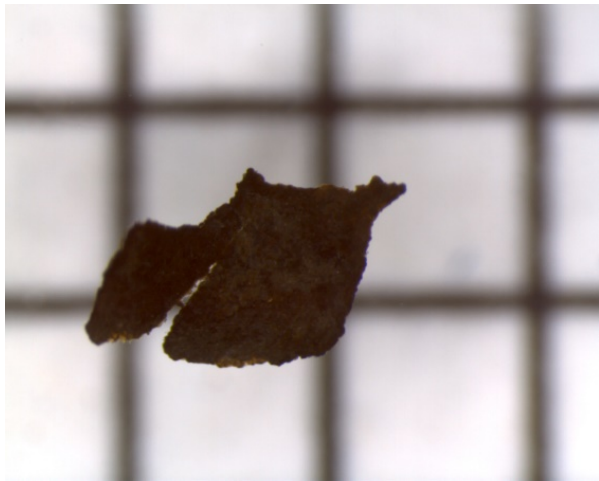
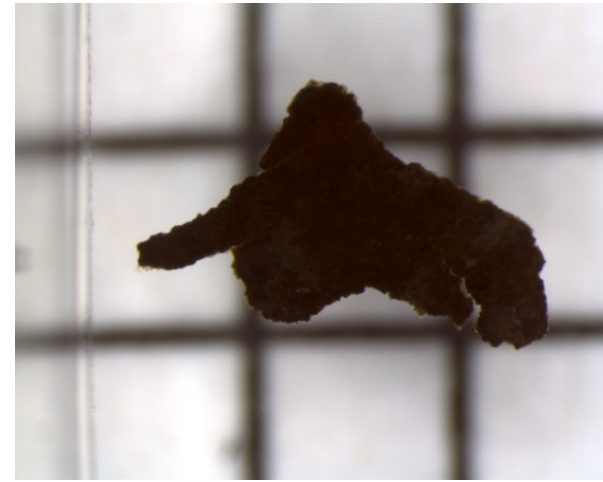
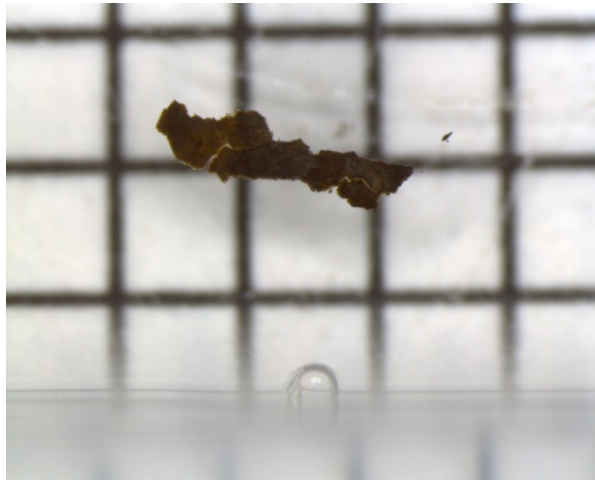
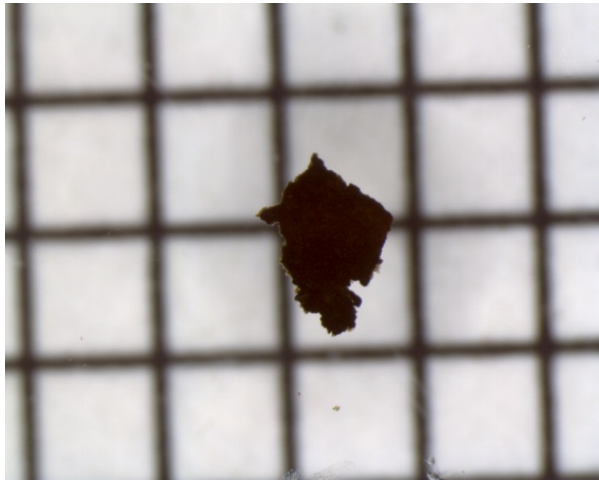
*Note: 1 square in image background is equivalent to 1 mm*

BE-9483.1.1



*Note: 1 square in image background is equivalent to 1 mm*

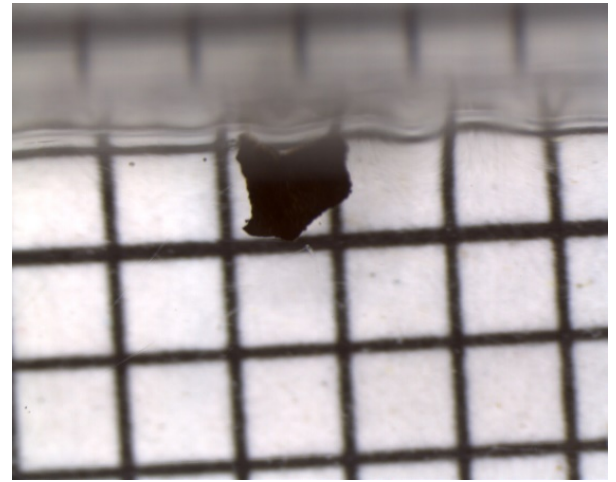
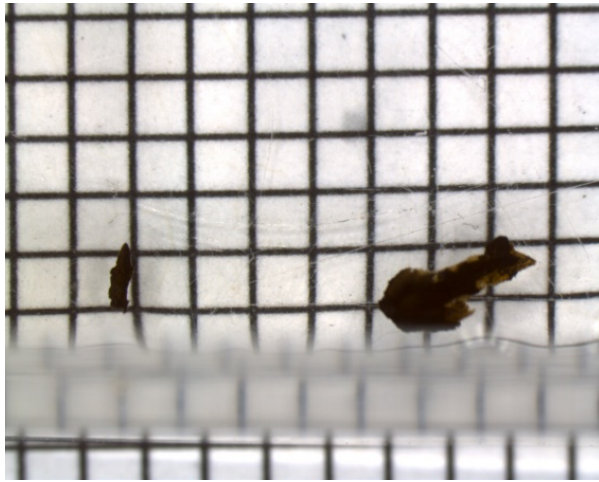
BE-9483.1.2



*Note: 1 square in image background is equivalent to 1 mm*

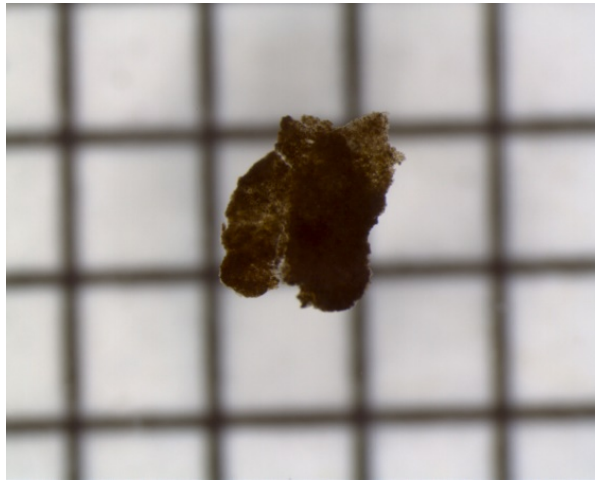
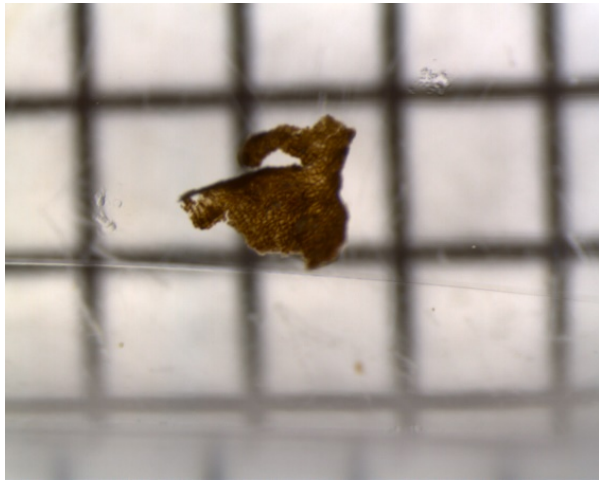


BE-9481.1.1



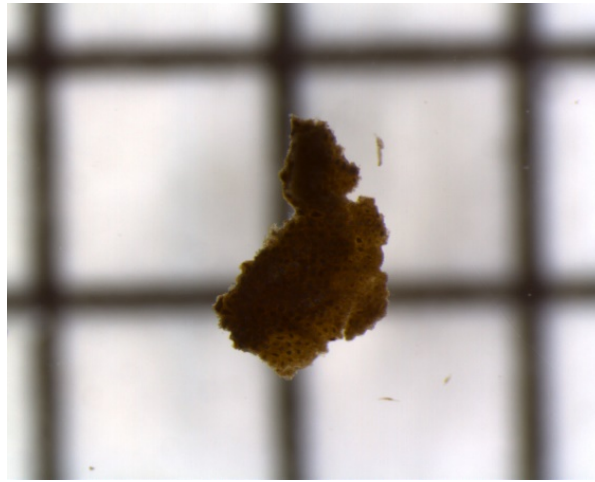
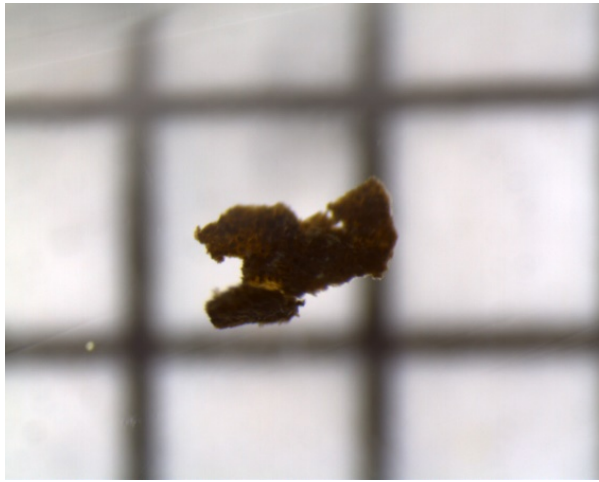
*Note: 1 square in image background is equivalent to 1 mm*

BE-9482.1.1



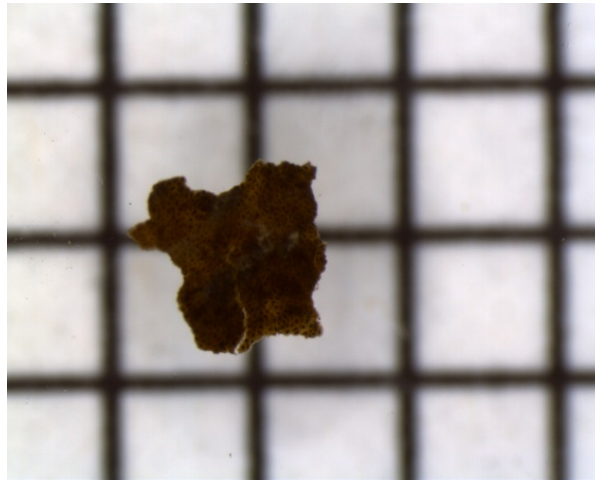
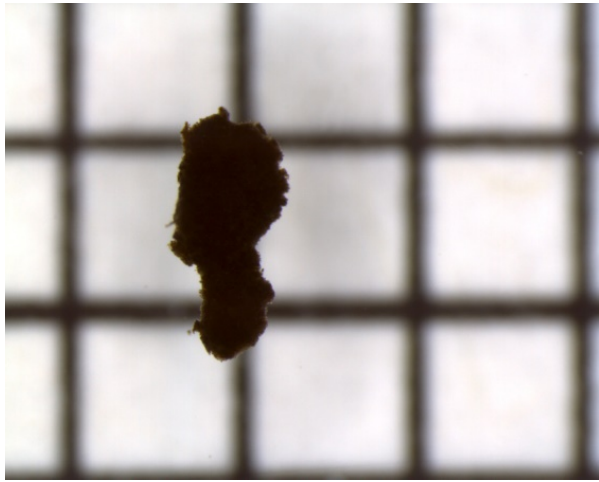
*Note: 1 square in image background is equivalent to 1 mm*

BE-9480.1.1



*Note: 1 square in image background is equivalent to 1 mm*

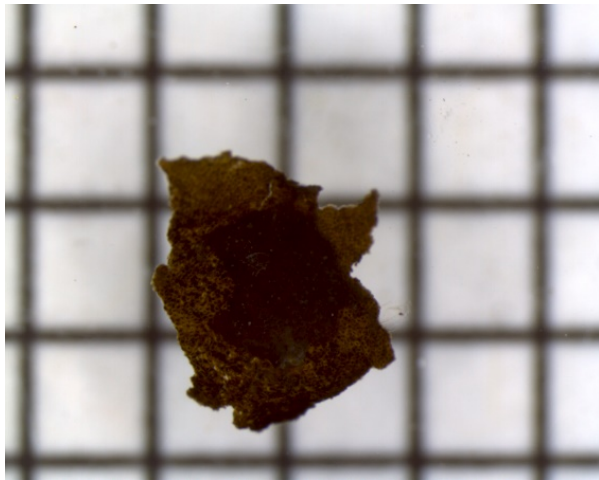
BE-9479.1.1



*Note: 1 square in image background is equivalent to 1 mm*

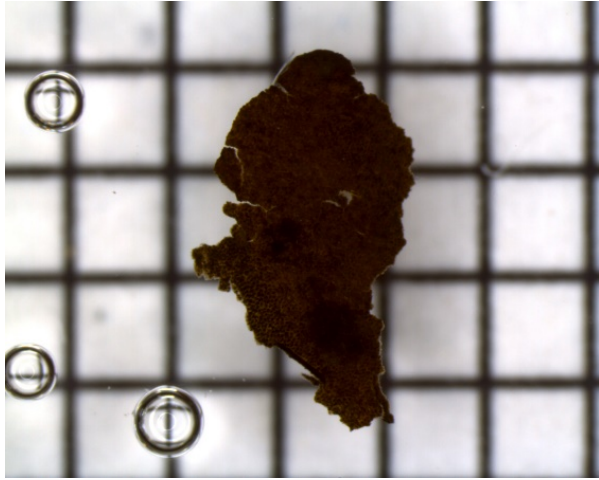


BE-9476.1.1



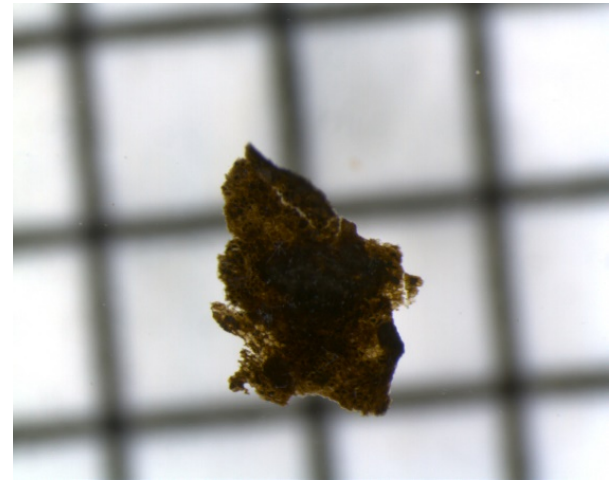
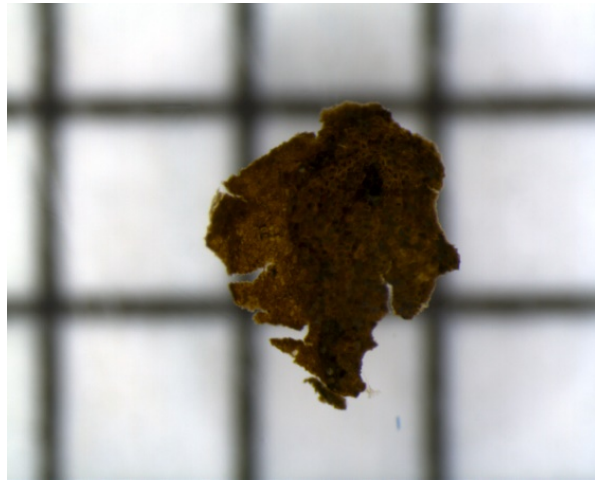
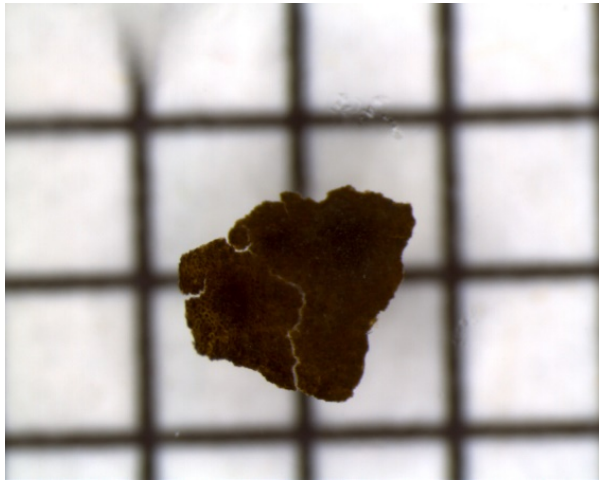
*Note: 1 square in image background is equivalent to 1 mm*

BE-9475.1.1



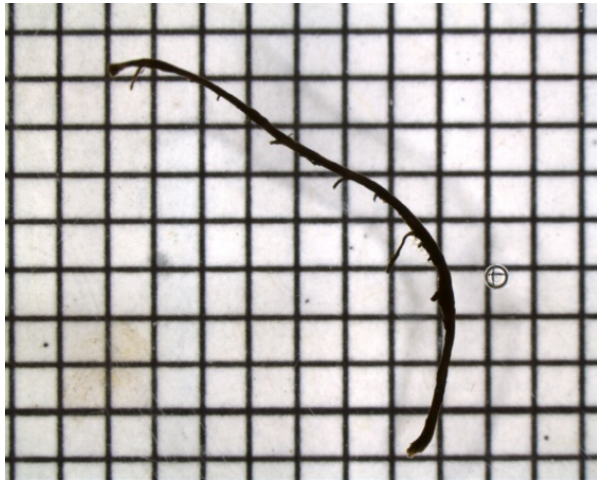
*Note: 1 square in image background is equivalent to 1 mm*

BE-9477.1.1



*Note: 1 square in image background is equivalent to 1 mm*

BE-9473.1.1



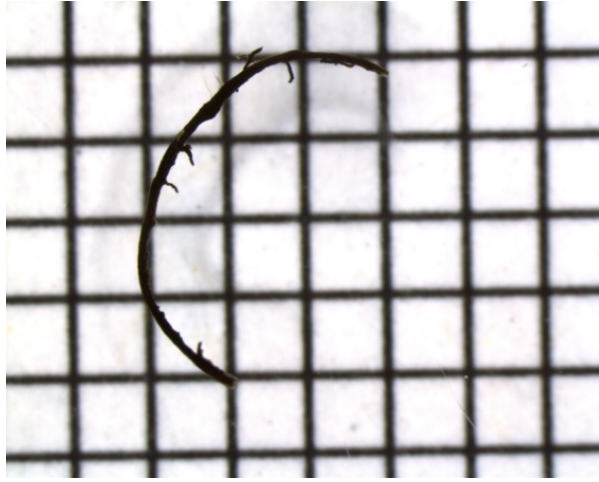
*Note: 1 square in image background is equivalent to 1 mm*

BE-9473.1.2



*Note: 1 square in image background is equivalent to 1 mm*

BE-9473.1.3



*Note: 1 square in image background is equivalent to 1 mm*

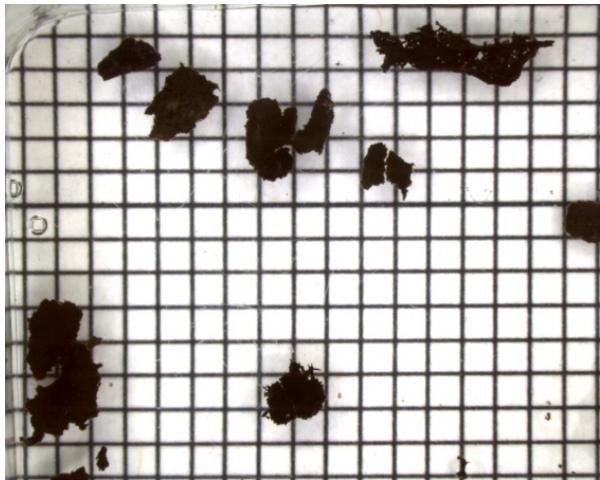
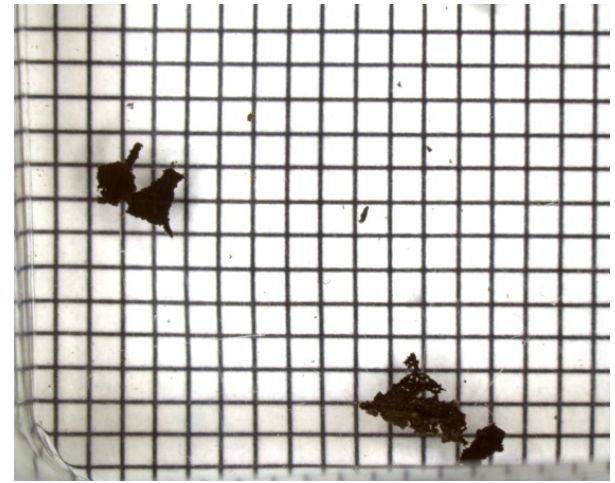
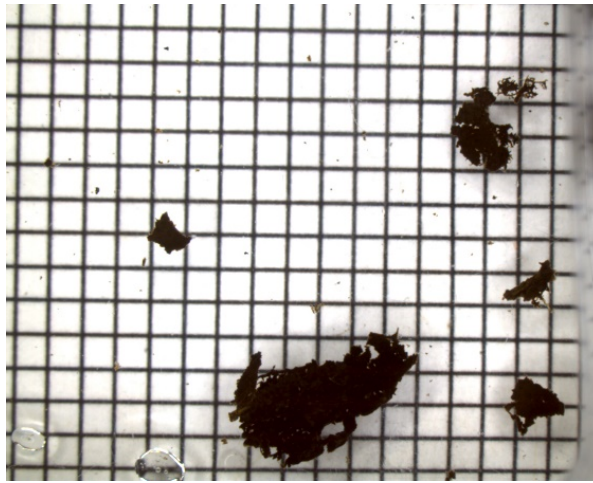
BE-9473.1.4



*Note: 1 square in image background is equivalent to 1 mm*



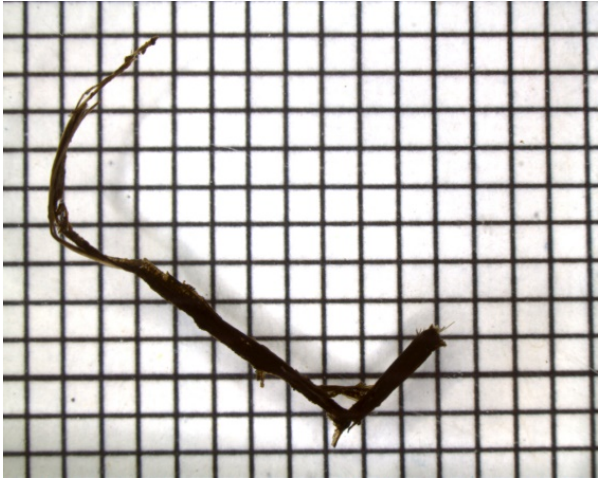
BE-9500.1.1



*Note: 1 square in image background is equivalent to 1 mm*

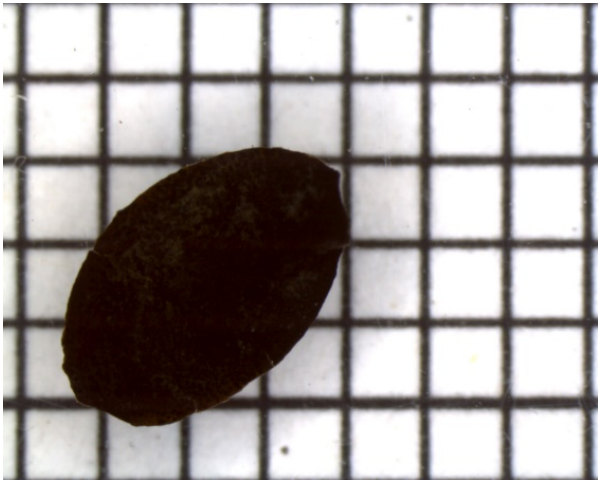


BE-9497.1.1



*Note: 1 square in image background is equivalent to 1 mm*

BE-9498.1.1



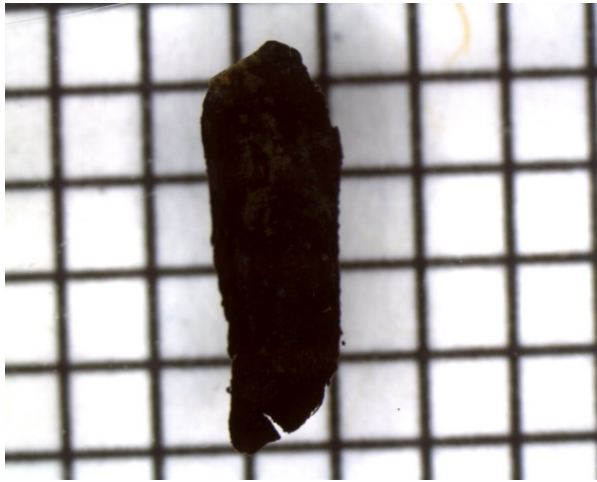
*Note: 1 square in image background is equivalent to 1 mm*

BE-9496.1.1



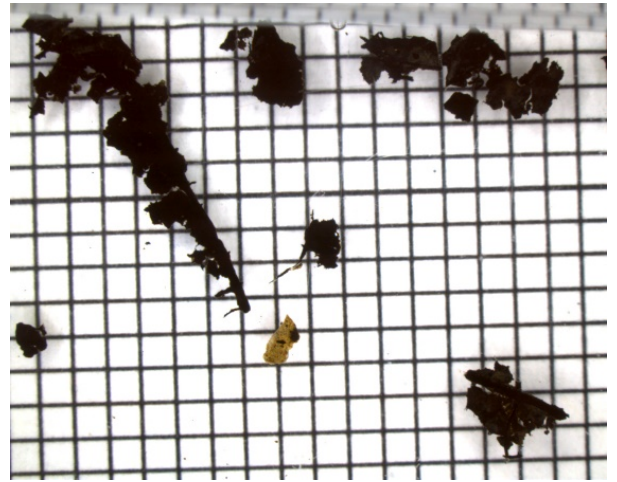
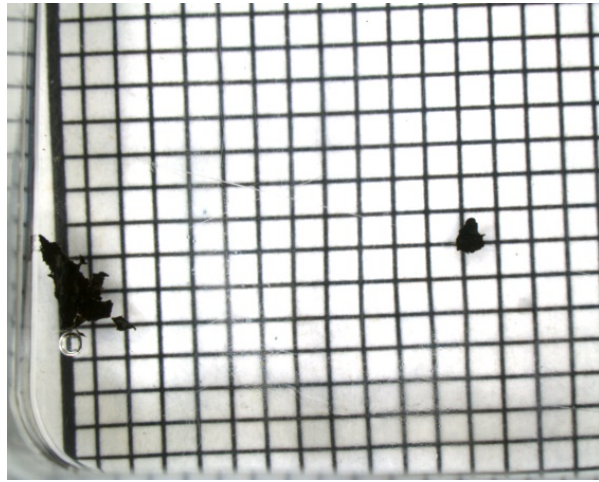
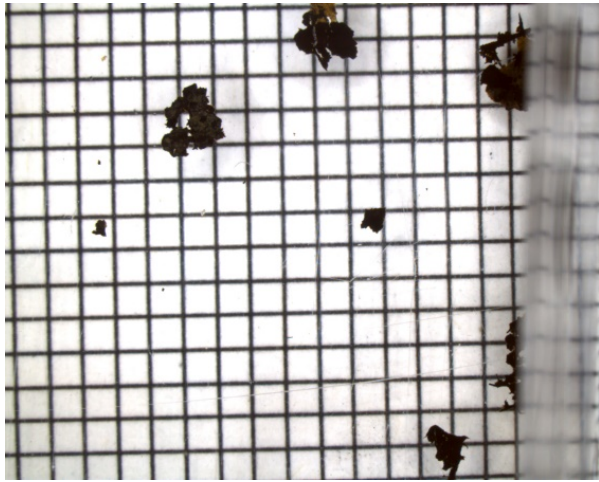
*Note: 1 square in image background is equivalent to 1 mm*

BE-9499.1.1



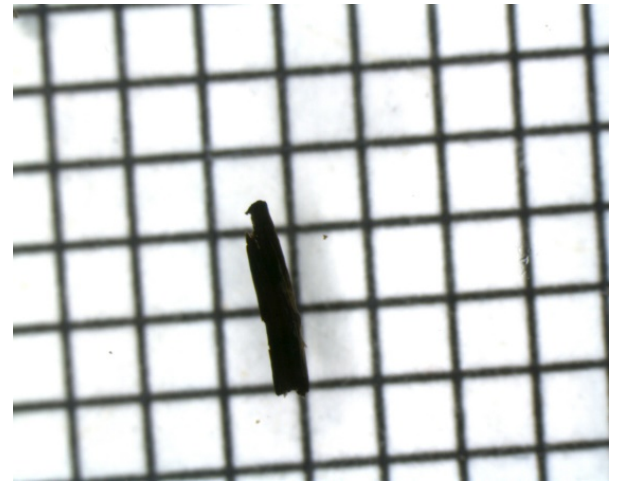
*Note: 1 square in image background is equivalent to 1 mm*

BE-9493.1.1



*Note: 1 square in image background is equivalent to 1 mm*

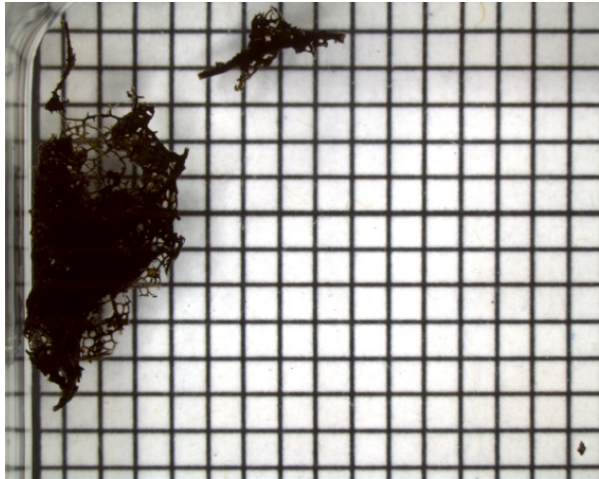
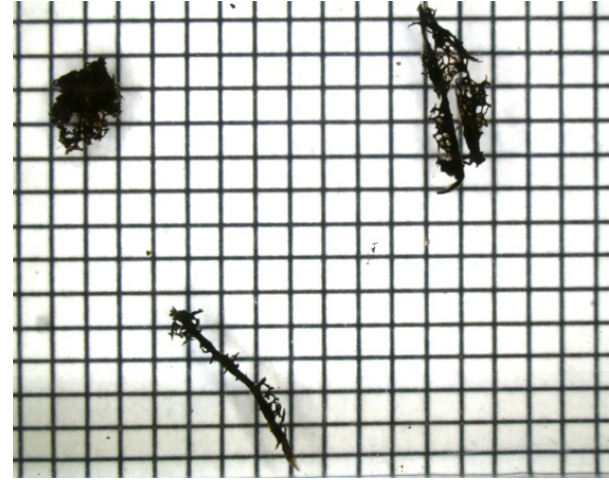
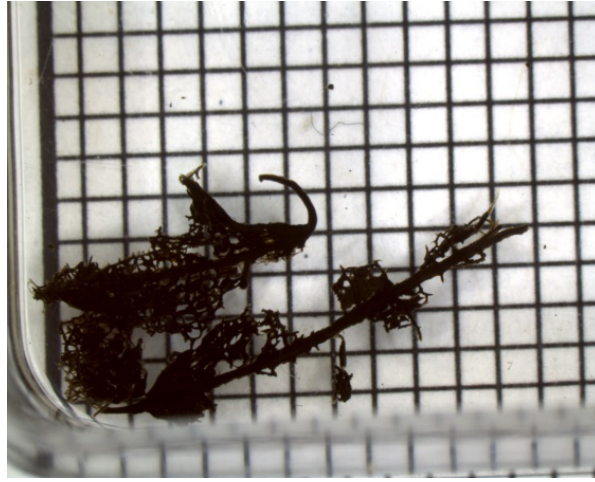
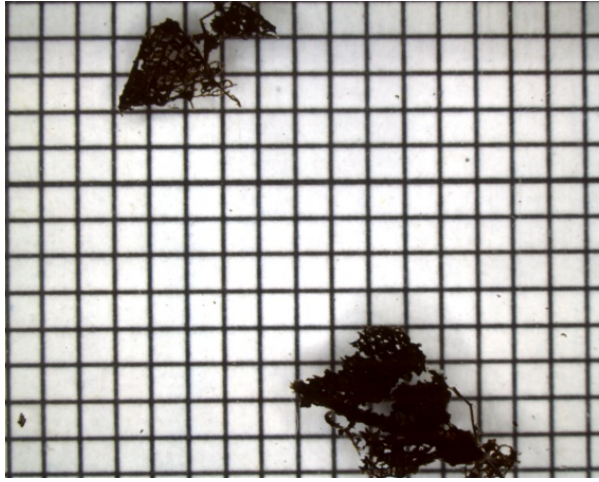
BE-9490.1.2 and BE-9490.1.1



*Note: 1 square in image background is equivalent to 1 mm*

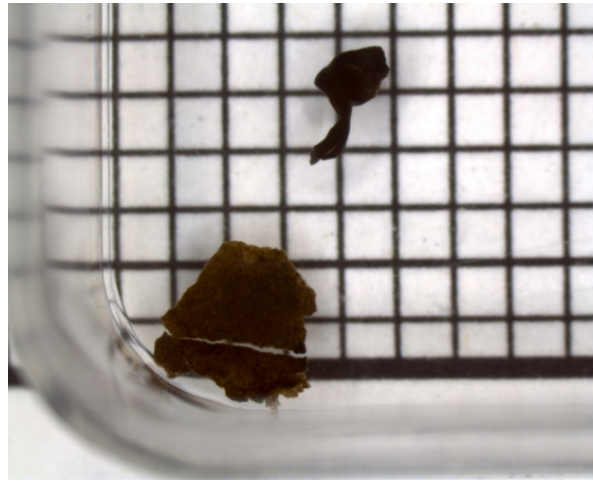
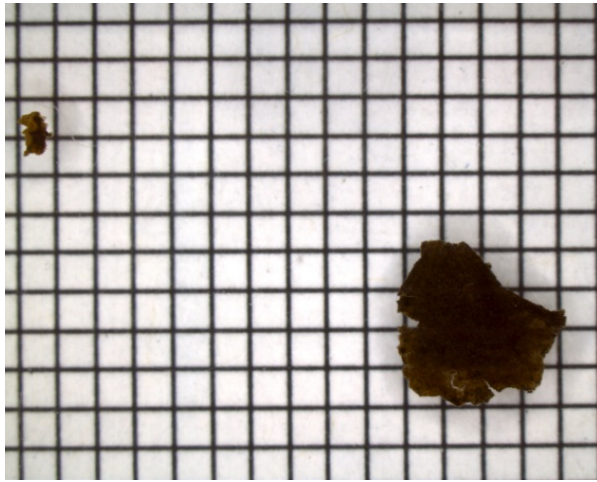


BE-9489.1.1, BE-9489.1.2, BE-9489.1.3, BE-9489.1.4, BE-9489.1.5



*Note: 1 square in image background is equivalent to 1 mm*

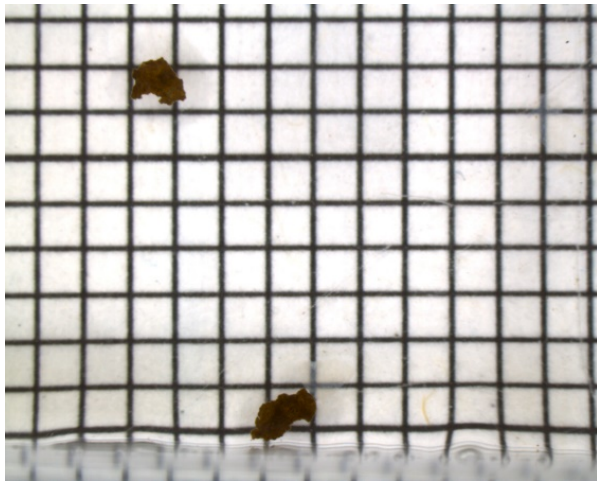
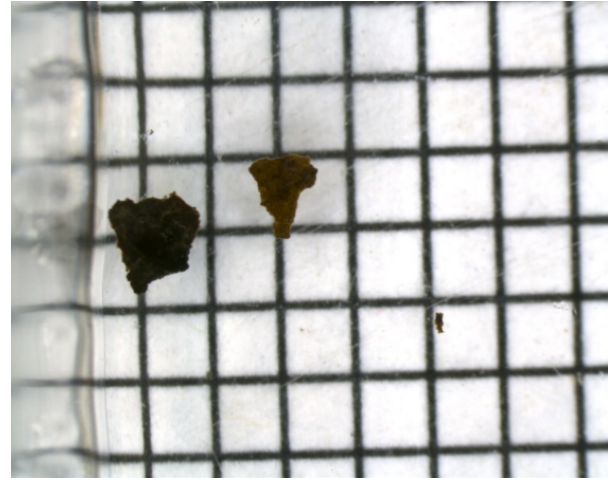
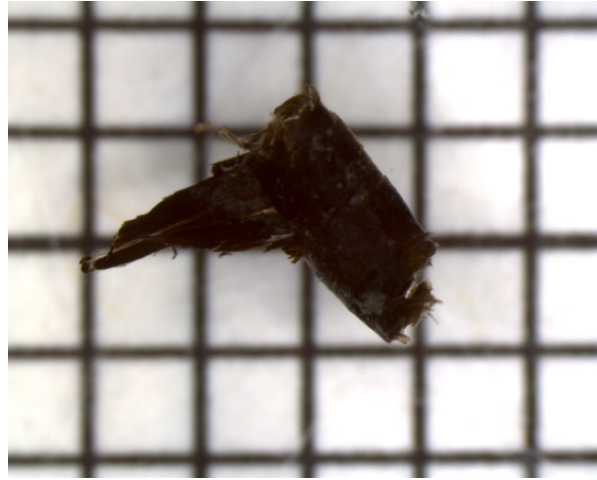
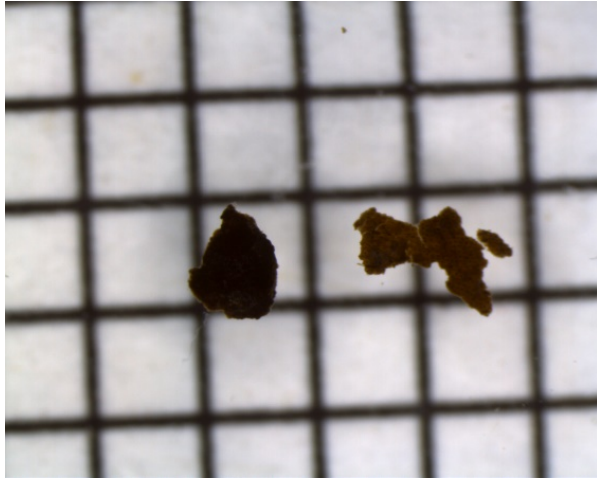
BE-9484.1.1



*Note: 1 square in image background is equivalent to 1 mm*

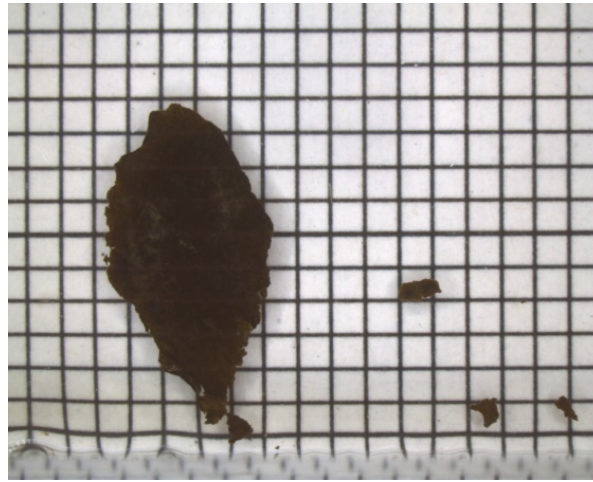
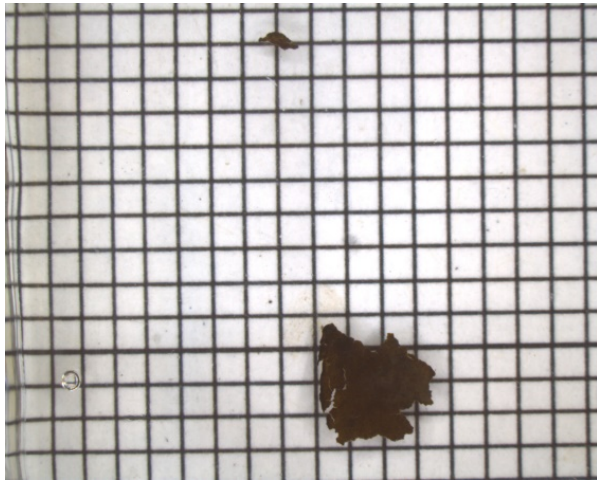


BE-9478.1.1



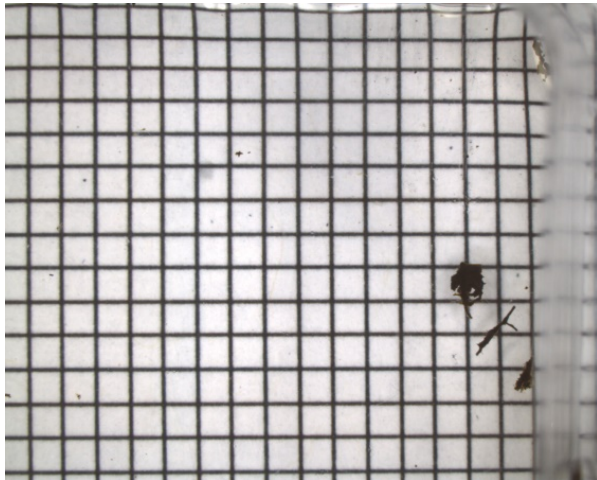
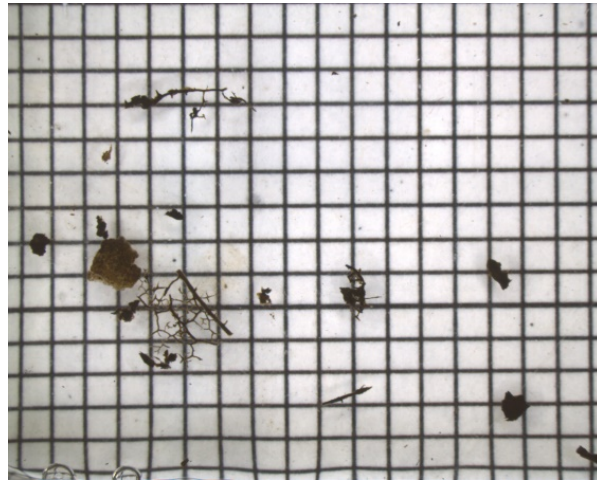
*Note: 1 square in image background is equivalent to 1 mm*

BE-9474.1.1



*Note: 1 square in image background is equivalent to 1 mm*

BE-9472.1.1



*Note: 1 square in image background is equivalent to 1 mm*