

Dr. Dietze:

Thanks very much for your attention to this paper and the online discussion. This accompanies a revised manuscript that takes account of the review comments.

In addition to dealing with the specifics of each review, we also changed the general emphasis of several parts of the paper to be more skeptical, in line with the thinking of both reviewers. We think the revised version is fair, informative, and, especially when taken with the open online discussion, contains enough information and discussion for readers to be able to thoroughly evaluate whether or not our conclusions are correct.

Finally, we consolidated citations in several sections of the text to improve clarity and readability. For example, in section 1.1 describing the overall stratigraphy and sedimentology of the NAVC, we cite source papers once at the beginning of the section and indicate that the entire section summarizes material from these sources, instead of citing the same papers after every sentence.

This document indexes the main points made in the reviews to the appropriate sections of the revised text. We identify or repeat each major point of discussion from our posted responses to the two anonymous reviews, and then note the location of changes to the revised text that relate to each point.

Per Copernicus instructions, a latexdiff markup of original and revised text is attached to this document. However, the page and line numbers listed here relate to the revised manuscript, NOT the marked up version.

Note that to keep this document manageable in size, it only discusses the major substantive comments by the reviewers. In addition to these substantive comments, both reviewers corrected a number of errors and omissions and requested minor clarifications in many sections of the text. All of these minor corrections and clarifications that are not specifically indexed here have been corrected in the revised text.

– Greg Balco (on behalf of all co-authors).

Response to review 1 (anonymous)

Regarding the main point of this review focusing on the amplitude of variation in reconstructed Be-10 fallout fluxes...

To summarize, we agree with the reviewer that convincingly arguing that we have reconstructed fallout variability would require showing that both (i) the pattern and (ii) the amplitude of variability are consistent with independent records. We cannot determine whether the amplitude is consistent or inconsistent, so we have relied only on the pattern of variability. This is, in fact, an inherent weakness of our situation in which most of the Be-10 is inherited and very little is fallout.

To address this in a revised paper, we propose the following:

(1) Add additional discussion in the paper highlighting the difficulty of reconstructing the amplitude of fallout variability given a lack of knowledge of R_s . We did discuss this in section 4.1, and Figures 14 and 15 show examples of reconstructed fallout fluxes with different values of R_s that highlight the difference in

amplitude but similarity in pattern between the resulting reconstructions. However, we did not repeat this discussion in section 4.2, where it is of course more directly relevant to the later attempts to correlate the decadal records. We can add additional discussion of this.

(2) Add additional discussion of why we relied on scaled and centered records for combining the KF and GL decadal records and also in comparing them with ice cores. We agree that the existing paper doesn't give a clear justification for this.

(3) Add additional material to the "weaknesses" section of the conclusions emphasizing that the difficulty in reconstructing the amplitude of variability is a problem for evaluating whether correlations with other records are or are not valid.

It would be possible to add additional figures like Figs. 1 and 2 above in this review, but on the other hand an advantage of the open review system is that this review response remains available to readers. As there are already a lot of figures in the paper, we are inclined not to add more, but we would welcome editorial guidance on this question.

We added or expanded discussion in section 4.1, p. 25, lines 5-10 through p. 26 lines 1-7; section 4.2.1, page 30, lines 20-30; section 4.2.2, p. 34, lines 10-15; section 5.5, page 46, lines 20-25.

NAVC varve count error: In the entire discussion there is no mention of the varve counting (relative) error of the NAVC. Is this really zero? It should at least be noted in the appropriate sections that differences in the GICC05/NAVC offset may well in part be due to errors in the NAVC, not just GICC05.

P6, L1: See earlier: Could you please add a sentence on the counting uncertainty of NAVC? How valid is the approach of using a single value for the offset?

Basically, the NAVC is believed to have negligible counting uncertainty below approximately NAVC 7200, where nearly all parts of the sequence are replicated in multiple records. The counting uncertainty in stratigraphically higher paraglacial varves that are much thinner and occur only at the Newbury section is significant, and has been discussed in the Ridge (2012) and Ridge and Toll (1999) references. We agree this should have been mentioned in section 1.1 or 1.2, and we will add it. However, note that it's not relevant to the overall conclusions, because we don't consider any Be-10 data above NAVC 7200 for purposes of correlation.

We added this to section 1.2, page 6 near line 5.

9Be/10Be extraction: Typically, 9Be and 10Be are measured on the same leaching fraction of sediment. Here, the authors employ different extraction techniques for both isotopes. For this to work, the extraction efficiency of each method must be constant. Is this a problem? Maybe the authors could comment on whether this has the potential to introduce variations in 9/10Be.

Assuming that using two different methods does not bias the results relies on two assumptions. One, each method is equally efficient on all samples, i.e. that the leaching method for Be-9 extracts all Be-9 that is adsorbed and not mineral-bound, and that the fusion method extracts all Be-10, period. Both of these methods have been tested for complete extraction in a variety of step-leaching experiments for the Be-9 method (described in the Greene reference) and by a variety of tests for the Be-10 fusion method (described in the Stone reference). Thus, there is no indication that the efficiency of these methods is sample-dependent. The

second assumption is that the total fusion method does not extract a significant amount of non-adsorbed Be-10 – the aim of the analysis is to determine the amount of adsorbed Be-10 and Be-9, so if we added Be-10 in minerals we might introduce a bias. The only possible source of mineral-bound Be-10 would be in-situ-produced cosmogenic Be-10 present in sediment that had been exposed to the surface cosmic-ray flux prior to glacial erosion and transport. Existing measurements of in-situ-produced Be-10 in subglacial sediment of the Laurentide Ice Sheet indicates in-situ-produced Be-10 concentrations on the order of 10,000 atoms/g, which is four orders of magnitude smaller than observed total Be-10 concentrations in this study. The highest in-situ-produced Be-10 concentration observed anywhere on the present land surface in New England is slightly less than 1 Matom/g, which is still two orders of magnitude less than total Be-10 observed in this study. Thus, it is not possible for in-situ-produced Be-10 extracted by fusion to cause any significant bias in the present study.

From the perspective of paper revisions, we would prefer not to recapitulate internal reliability tests already described in the Greene and Stone papers. However, we can add a more explicit discussion of the minimal importance of in-situ-produced Be-10 to the methods section....this is already referred to briefly on page 7, but it would probably be good to remind the readers in section 2.5 in the methods as well.

We revised the methods section to be more clear about the differences between the two types of measurement. Section 2.4, page 1, lines 15-20, and section 2.5, p. 13, lines 10-20.

P2 L15-16: Please indicate what this uncertainty refers to, i.e., how many sigma.

As discussed in the Ridge (2012) and Thompson (2017) references, this uncertainty is probably not symmetric or normally distributed, so characterizing it as having a standard error σ would be inappropriate. We'll clarify this.

We clarified this on page 6 around line 25.

P2, L32: Again, Heikkilae et al and Adolphi et al. do not contain new measurements. Please give credit to the authors that produced these long records: (Adolphi et al., 2014; Baumgartner et al., 1997; Finkel and Nishiizumi, 1997; Raimund Muscheler et al., 2004; Vonmoos et al., 2006; Yiou et al., 1997)

Our aim is certainly not to disregard the contributions of the original researchers, but as a matter of scientific citation practice we think it is better to refer to these review papers, which provide extremely thorough and comprehensive reviews of past work, instead of attempting a weaker and less comprehensive review in this paper. The purpose of the present paper is not to review past work, so we have predominantly cited the review papers.

As noted in the review response, we cited review papers rather than attempting to cite all primary sources for ¹⁰Be measurements in ice cores.

P3, L22-24: If there is a transient transition over 100-200 years in the lake system: How can a synchronization of local climate records to Greenland be attempted? The result would depend on which varve record was chosen? Could you please comment? What does this mean for the achievable uncertainty of climate synchronizations?

Correct: this would indicate that it would be a bad idea to try to correlate a composite record that spans the glacial-interglacial transition at one or more sites. We haven't tried to do this – our attempted correlations

involve records that are entirely glacial (KF/GL) or span the transition at a single site (Newbury). At Newbury, of course, we later show that there doesn't seem to be any fallout signal in the paraglacial varves, so data from within and after the transition do not seem to have any value for correlation. Thus, this turns out not to be an issue.

This issue did not appear to require any changes to the text.

P6, L16-26: Recently a new radiocarbon calibration was released (IntCal20) which contains significant changes from IntCal13. I understand that it is beyond the scope of this study to redo all the calibrations, but maybe it is worthwhile mentioning that this adds extra uncertainty to the (by looking at the data, in my opinion very optimistic) 200 years.

Agreed. It is awkward that INTCAL20 came out just as we were working on this paper. As a practical matter, I am not sure we can do anything about this without incurring major delays.

As noted, we did not attempt to update all radiocarbon calibrations in this paper to INTCAL20.

P12, L1-3: This is only true if these inaccuracies are systematic. Are they?

They are certainly systematic in the sense that they can only lead to an underestimate of the density, not an overestimate. However, the reviewer's statement is not strictly accurate. Suppose we measured the density on a number of samples and the results showed a broad distribution that was skewed to the low side, indicating an underestimate of the density that had both random and systematic contributions. If we then took the average of all the density measurements and applied the average to convert concentrations to fluxes, we would, as is stated in the text, systematically underestimate the total Be flux. In other words, it would not be the distribution of the density measurements themselves, but the use of a simple average to summarize them, that would result in the systematic underestimate of Be fluxes. The point of collecting the data shown in Figure 3 was to do a better job than this.

P12, L9: Looking at figure 3 the $\pm 0.05\text{g/cm}^3$ seem very optimistic. How would the regression in figure 3 change if the two summer varve measurements were excluded from the analysis?

The result would be similar, as long as the low-skewed residuals were also excluded. However, the purpose of making the summer and winter measurements was specifically to make this regression more accurate by spanning a wider range of grain sizes, so it is not clear why we would then exclude them.

These issues did not appear to require additional text.

P16, L1-2: Earlier you write that S may be variable? Does this correction come with an uncertainty that is propagated throughout the study?

We will clarify this. Overall we conclude from the comparison of data between AMS measurement periods that S is most likely constant. However, this is not actually relevant to the uncertainty estimate for the Be-10 concentrations, because we also have an internal criterion for how well the correction procedure performs that is provided by large numbers of replicate measurements. The uncertainty we eventually apply to the Be-10 concentrations is not derived from error propagation from the individual measurements, but instead from analysis of the corrected replicate data. Thus, it includes any uncertainty contributed by variable S.

We clarified this issue on p. 17, near line 5 and also in the next paragraph near line 10.

P18, Figure 9: Around 6700 NAVC years, there are large changes in MAR and ^9Be , but not in ^{10}Be . While it could of course be, that simultaneous and large production rate changes (however, of likely unphysical amplitude, see major comments) counteract? this the changes in the delivery of inherited ^{10}Be , this seems unlikely. Rather, this may highlight variable $^{10}/^9\text{Be}$ ratios in the inherited Be . Please add a few sentences discussing this feature.

Figure 9 shows grain size, not MAR. However, this is true and we have discussed it somewhat in section 4.2.2 that deals with the Newbury data that cover that period. This is an interesting point, though, because it is true that a large peak in reconstructed fallout flux around this time, which later becomes important in the correlation section, is associated with large variations in total deposition rate. As the reconstructed fallout peak is only represented by one sample, we agree this looks suspicious. However, this is exactly where we expect a large peak in Be-10 fallout based on ice core records and previous, independent, age calibration of the NAVC. There is no evidence that the Be-9 or Be-10 measurements in this area are inaccurate or anomalous, so we think we have to assume all the data are valid, apply the linear model to reconstruct the fallout rates, and then proceed with the results without second-guessing them. Disregarding a few data, no matter how suspicious they look, without evidence that they are spurious would be bad practice. So I think we are kind of stuck with this. We do highlight at the end of the paper that some of the apparent correlations are based on very poorly characterized peaks and it would be very helpful to replicate them at higher resolution.

As this issue was already discussed in the original version, it did not appear to require new text.

P22, L8-9: ?constant or normally distributed?: But neither of these assumptions is true. It is obviously not constant (otherwise this study wouldn't be possible) and it is also not symmetric because i) if solar variability was normally distributed, the non-linear production rate relationship would still cause a skewed distribution of production rates, and ii) the transport and washout of aerosols from the atmosphere causes a logarithmic distribution of aerosol deposition even if the production rates were normally distributed. It is still ok, to use the model as is, but it should be highlighted, that these assumptions are not true, but sufficiently correct to not affect the validity of the results.

Correct. We can clarify this. Basically, what we are arguing here is that short-term periodic variations should be close enough to symmetric that we can make progress with simple assumptions.

Clarified on page 23, lines 1-10.

P26, L18: ?factor of 2? it should be noted that also ice cores are affected by transport and deposition effects of ^{10}Be , especially during periods of such variable climate. As mentioned earlier, there are physical constraints of what amplitude of changes we can expect.

We agree.

We added a brief reference to this issue on p. 26, near line 5.

Figure 18: ?95% confidence? How is this determined? Do you take autocorrelation of the records into account?

This is just a simple comparison against the expected distribution of the correlation coefficient for indepen-

dent random data. Specifically, we used the MATLAB implementation described here:

<https://www.mathworks.com/help/matlab/ref/corrcoef.html>

This did not appear to require any changes to the text, although we made sure to use standard statistics terminology throughout the paper to avoid confusion, and we added a more precise description of the confidence estimate to the caption for Fig. 18.

P31, L3-4: I'd argue that the agreement is not that good? The amplitudes are different, and due to the similarity of both MAR records, the similarities in ^{10}Be fluxes may well be caused by the flux calculation. Is it worthwhile discussing this option?

We agree that this is not established with extremely high confidence, but the two records have similarities not only in MAR but in the measured $^{10}\text{Be}/^{9}\text{Be}$ ratio, which should theoretically be independent of MAR. It's the variations in the ratio that are most important to the flux estimate. If you compare MAR to the flux estimate in Figs. 16-17, it is evident that there are both (i) areas with fairly constant MAR but variable reconstructed flux (NAVC 3600-3800) and also (ii) areas with variable MAR but constant reconstructed flux (4300-4500). Given this, it seems unjustified to argue that only some variations in MAR create spurious flux variations. Having established how to do the flux estimate, we think we have to follow it through and not second-guess particular features later.

This did not appear to require any specific changes. As described below in reference to the second reviewer's major concern, we did add some discussion of environmental vs. fallout variation in several places.

P31, L4-5: The general problem with matching these records is, that one will always find a match due to the periodicity of the signals. Hence, the amplitude discussion is important.

Figure 19: The doubling of $^{10}\text{Be}/^{9}\text{Be}$ between 6800 and 7200 NAVC cannot be production (unphysical amplitude). Please discuss.

Figure 21: See above

As discussed above at the beginning of the review, the amplitude of our reconstructed fluxes can't be taken to be reliable. Thus, although the reviewer is correct here, we aren't strictly able to conclude anything from the amplitudes.

As noted above in our response to the first major comment, we added discussion of this issue in several places.

P34, L24-35: I'd argue that the sediment and ice core ^{10}Be records simply don't look alike. Aligning a single peak can easily lead to erroneous results. Please find a measure for the similarity of the records that can be used to quantify the uncertainty in the match as well.

Certainly we agree that aligning a single peak can lead to erroneous or at least non-unique results, and we said this in lines 30-35. We also said this in section 5.5 (which actually has the title "Weaknesses."). So we

agree completely. Also, we think the correlation metric does show this, specifically in the lowest panel of Fig. 22 that clearly shows identical correlations between the records for different offsets of 20920 and 20675. Obviously, the uncertainty in this situation is not characterized by a continuous uncertainty distribution around some most likely value, but instead by a variety of distinct values that are equally possible, and we think Fig. 22 communicates this.

This did not seem to require any changes to the text.

Figure 22: Please do not display the data as zscores. A lot of crucial information is lost that way, and it causes deviations between the ice core datasets that are merely due to resolution affecting the standard deviation of each record.

We think we disagree with this assessment. As we discussed at the beginning of the review, our reconstruction of the amplitude of fallout variability is not reliable and should not be used as a criterion for comparison. Thus, we specifically used a centering and scaling procedure to remove amplitude as an element in the comparisons. As noted above, we can add additional material clarifying this.

We added specific discussion of this in section 4.2.1 on page 30, lines 30-35.

Figure 25: Consider plotting NGRIP, GRIP and NEEM d18O as well to get an idea about the robustness of those features.

In writing this paper we were specifically trying not to break new ground in correlating varve thickness records with ice core climate records, because we are trying to focus on the Be-10 data. The proposed varve thickness-oxygen isotope correlations are reproduced exactly from the Ridge (2012) reference, and we have intentionally not added any new discussion or evaluation of the previously proposed correlations – our aim is just to benchmark the Be-10 data against previously proposed varve-ice core correlations, without reopening the subject of the validity of the previous correlations. We think this is the best approach, because the present paper is already very long, and although we agree that it would be interesting to bring in the GRIP and NGRIP data, we continue to think it is off topic from the perspective of this paper. Certainly we can add some text to clarify that we are not proposing or endorsing the event correlations in this paper, just presenting them as previous work.

We did not add new material evaluating previously proposed correlations with GISP2 also against GRIP and NGRIP. Honestly, we agree this would be interesting but it's just beyond the scope of the present paper.

Response to review 2 (anonymous)

Regarding the main point of this review focusing on environmental variability in reconstructed Be-10 fallout fluxes...

To summarize our response to this section of the review, the reviewer is correct that the presence of a strong environmental signal in *total* Be-10 delivery to the lake makes it quite difficult to prove conclusively whether or not our reconstructed *fallout* fluxes are uncontaminated by environmental effects. This is one of the key motivations for our approach of defining a systematic procedure for reconstructing fallout fluxes using a linear unmixing model, and then, having done so, proceeding to ask whether the fallout reconstruction

resulting from this approach is or is not consistent with expectations for ice core records. To address this in a revised paper, we propose the following:

(1) Add some discussion of this issue to the description of our unmixing model in the methods section on pp. 8-9. Although the purpose of the unmixing model is to separate environmental from fallout variability, we did not make that clear in those words. We can make this clearer for readers.

(2) Add explicit discussion of this issue to the conclusions. Although we allude in various places to the issue of environmental vs. fallout variability, the submitted draft did not include an explicit discussion of whether or not the reconstructed fallout estimates are or are not contaminated by environmental factors. We can add this to section 5.

In the original submission we decided not to include figures like Figure 1 above in this review, because, as discussed above, their diagnostic value is somewhat ambiguous, and they do not lead to any clear conclusion. As this paper is already quite long with many figures, we would like to avoid adding additional ones. We note that because of the open review procedure, this discussion will be available to readers, and in addition we have provided all the data plotted in Figs. 11-15, 16-17, and 19-21 as simple supplementary tables, so that readers can easily make similar calculations in a spreadsheet.

Added discussion in section 1.3, p. 9, lines 5-10; section 4.2, p. 29, lines 5-10 through p. 30 line 15; page 35 lines 10-15; page 44, lines 5-10.

Considering the possible presence of a substantial environmental signal in the calculated ^{10}Be fallout records questions the robustness of the synchronization of NAVC ^{10}Be with Greenland ice core ^{10}Be . Prerequisite for such studies is a reliable production rate signal in all applied ^{10}Be records. This should be considered in the discussion of the synchronization and paleoclimate comparison.

As discussed above, we agree. However, as also discussed above, this is a particularly difficult aspect of this study because with the data we collected, combined with the inherent imprecision of applying our unmixing model in this situation where Be-10 is dominantly inherited and fallout variations have only a small effect on the observed data, there is no unambiguous way to prove that reconstructed fallout variations are entirely independent of environmental factors. Now that we know more about Be-10 systematics in NAVC sediments, it is possible to think of some ideas for how to do a better job of this, for example by focusing on sections of the NAVC where we expect to observe anomalously large peaks in Be-10 fallout that are represented in the ice core records. We have discussed some of these ideas in the conclusions of the paper.

The added discussion noted above pertains to this comment as well.

In addition, it would be also interesting to see how the originally measured ^{10}Be concentration and $^{10}\text{Be}/^9\text{Be}$ -ratio time-series compare with Greenland ice core ^{10}Be fluxes, e.g. to evaluate how much common variability is incorporated.

We agree that this might be interesting, but it is asking a completely different question. Our results clearly show that the total Be-10 (and Be-9) flux to NAVC sediments is mainly controlled by environmental factors, presumably mainly forced by climate. Thus, comparing total Be-10 flux records to Greenland ice core Be-10 fallout records would be equivalent to asking whether solar variability had an effect on local climate. Of course, this question would be better posed by comparing Greenland Be-10 records directly with properties of the NAVC that are more clearly linked to climate, for example varve thickness records, rather than indi-

rectly through measured Be-10 concentrations. With regard to the measured 10/9 ratios, what we are doing in this paper by using a linear model to separate fallout and environmental effects could alternatively be described as simply comparing our measured 10/9 ratios to Greenland ice core Be-10 fluxes – all we have done is apply a linear transformation to the ratio.

This did not appear to require any additional text.

(3) Pages 22/11 to 23/2: Please shortly discuss these two contradictory results, and their implications for the calculation 10Be fallout variability.

A closer look at this section of the text indicates that the submitted version of the paper is misleading in suggesting a conflict here. The purpose of mentioning the Rittenour study was simply to highlight that the only relevant previous work did not show any evidence for the presence of solar-cycle variability in varve thickness variations. Regardless of the Rittenour result, however, the spectral analysis of biennial records in our paper identified spectral power in the 11-year band at 90% confidence only in one out of ten data sets from the NHV and KF sites (5 data sets from each site as shown in Figs. 11 and 12), which is exactly as expected for the null hypothesis in which there is no systematic variability in any of the data sets in this frequency band. Thus, our statement in the original draft that "...spectral analysis of grain size variations...may suggest otherwise" in this section of the text is not, in fact, supported by the analysis. We can clarify this section of the text to make clear that our results are not in conflict with the Rittenour study.

We removed the incorrect statement. Page 23, near line 10.

Atmospherically-produced beryllium-10 in annually laminated late-glacial sediments of the North American Varve Chronology

Greg Balco¹, Benjamin D. DeJong^{2,3}, John C. Ridge⁴, Paul R. Bierman³, and Dylan H. Rood^{5,6}

¹Berkeley Geochronology Center, 2455 Ridge Road, Berkeley CA USA

²Vanasse Hangen Brustlin, Inc., Montpelier VT USA

³Department of Geology, University of Vermont, Burlington VT USA

⁴Department of Earth and Ocean Sciences, Tufts University, Medford MA USA

⁵Department of Earth Science and Engineering, Royal School of Mines, Imperial College London, London UK

⁶Earth Research Institute, University of California, Santa Barbara, CA 93106, USA

Correspondence: Greg Balco (balcs@bgc.org)

Abstract.

We attempt to synchronize the North American Varve Chronology (NAVC) with ~~the ice core and~~ calendar year time ~~scale scales~~ by comparing records of atmospherically produced ¹⁰Be fallout in the NAVC and in ice cores. The North American Varve Chronology (NAVC) is a sequence of 5659 varves deposited in a series of proglacial lakes adjacent to the southeast margin of the retreating Laurentide Ice Sheet between approximately 18,200 - 12,500 years before present. Because properties of NAVC varves are related to climate, the NAVC is also a climate proxy record with annual resolution, and our overall goal is to place the NAVC and ice core records on the same time scale to facilitate high-resolution correlation of climate ~~events~~proxy variations in both. Total ¹⁰Be concentrations in NAVC sediments are within the range of those observed in other lacustrine records of ¹⁰Be fallout, but ⁹Be and ¹⁰Be concentrations considered together show that the majority of ¹⁰Be is present in glacial sediment when it enters the lake, and only a minority of total ¹⁰Be derives from atmospheric fallout at the time of sediment deposition. Because of this, an initial ~~strategy experiment~~ to determine whether or not ¹⁰Be fallout variations were recorded in NAVC sediments by attempting to observe the characteristic 11-year solar cycle in ~~high-resolution sections of varve sequences~~ short varve sections sampled at high resolution was inconclusive: ~~observed~~ short-period variations at the expected magnitude of this cycle were not distinguishable from measurement scatter. On the other hand, ~~we did observe longer varve sequences sampled at decadal resolution display~~ centennial-period variations in reconstructed ¹⁰Be fallout that ~~are replicated between separate varve sections and have similar magnitude and frequency as~~ have similar properties to coeval ¹⁰Be fallout variations recorded in ice core records. These are most prominent in glacial sections of the NAVC that were deposited in proglacial lakes, ~~but and~~ are suppressed in paraglacial sections of the NAVC that were deposited in lakes lacking direct glacial sediment input, ~~which leads us to conclude that proglacial lakes whose watershed likely includes a large portion of the ablation area.~~ We attribute this difference to the fact that buffering of ¹⁰Be fallout by soil adsorption can filter out short-period variations in an entirely deglaciated watershed, but such buffering cannot occur in the ablation zone of an ice sheet ~~can~~. This implies that proglacial lakes whose watershed is mostly glacial may effectively record ¹⁰Be fallout. ~~We matched~~

~~observed centennial-scale variations. We attempted to match centennial-period variations in reconstructed ^{10}Be fallout variations in flux from two segments of the NAVC to ice core ^{10}Be with ice core fallout records. Although the calibration of the NAVC to the calendar year time scale implied by these matches is similar to that proposed previously in independent calibrations based on radiocarbon data and correlation of climate events, For both records, it is possible to obtain matches that result in acceptable correlation between NAVC and ice core ^{10}Be fallout records, but the best-fitting matches for the two different segments disagree with each other and with the independent calibrations by 50-200 years. One of these matches is not segments disagree, and only one of them is consistent with independent evidence and is probably not valid, but the other is consistent with most, although not all, evidence and may be valid calendar year calibrations of the NAVC and is therefore potentially valid.~~ This leaves several remaining ambiguities in whether or not ^{10}Be fallout variations can, in fact, be used for synchronizing NAVC and ice core timescales, but these could most likely be resolved by higher-resolution and replicate ^{10}Be measurements on targeted sections of the NAVC.

1 Introduction

We describe measurements of atmospherically produced ^{10}Be in annually laminated sediments of the North American Varve Chronology (NAVC; Ridge et al., 2012). These sediments were deposited in an initially proglacial and subsequently paraglacial lake adjacent to the southeast margin of the retreating Laurentide Ice Sheet (LIS) between 18,200 - 12,500 years BP. The NAVC records events taking place at the ice sheet margin during this time, including the position and retreat rate of the ice margin, meltwater and sediment production, and proglacial lake outburst floods (Ridge, 2004, 2012; Ridge et al., 2012). Because some of these events are related to climate (Ridge et al., 2012; Thompson et al., 2017), the NAVC is also a climate proxy record with annual resolution.

Our overall goal in investigating ^{10}Be deposition in NAVC sediments is to synchronize this record with Greenland ice core records that provide a primary template for our understanding of northern hemisphere climate change during the last deglaciation. The NAVC is a floating varve chronology that is anchored to the absolute time scale by radiocarbon dating of plant macrofossils deposited in individual varves, and the uncertainty in this calibration is estimated to be no better than ± 200 years (Ridge et al., 2012; Thompson et al., 2017) (see section 1.2). When changes in ice-margin positions and meltwater flux recorded in the NAVC are compared with climate records in Greenland ice cores, it is evident that many events recorded by the NAVC appear to correlate with rapid temperature changes in Greenland ~~occurring at boundaries for~~, for example those occurring at the boundaries of Greenland stadials and interstadials GS2a, GI-1e through 1a, and GS-1 (Lowe et al., 2008). Improved precision in correlating these two records, therefore, could potentially illuminate important aspects of ice sheet-climate feedbacks during rapid climate changes that took place during deglaciation, for example, the phasing relation between atmospheric temperature change in Greenland and the retreat rate of the southern margin of the Laurentide Ice Sheet in New England, or the effect of proglacial lake drainage into the North Atlantic Ocean on regional surface climate.

In principle, it should be possible to synchronize these two climate records by comparing ~~the~~ deposition rates of atmospherically-produced ^{10}Be . ^{10}Be is produced in the atmosphere by cosmic-ray bombardment of target nuclei, primarily N and O, and delivered to the surface by precipitation or dry fallout (Lal and Peters, 1967; Lal, 1987). The ^{10}Be production rate ~~and, therefore, the deposition rate at the surface, vary~~ varies significantly with changes in solar activity and geomagnetic field properties. ~~Because these processes, which~~ are global in nature. Although the deposition rate is further mediated to some extent by regional atmospheric circulation, variations in the ^{10}Be fallout rate are, in general, globally synchronous. ~~and records. Records~~ of the ^{10}Be deposition rate in ice cores and sediments have been extensively used both to reconstruct past solar and geomagnetic changes (e.g., Heikkilä et al., 2013, and references therein) (e.g., Bard et al., 1997; Muscheler et al., 2007; Steinhilber et al., 2012) and to synchronize different records (e.g., Adolphi et al., 2018, and references therein). Beryllium-10 deposition rates have been measured in ice cores in Greenland and elsewhere in many studies (e.g., Beer et al., 1985; Heikkilä et al., 2013; Adolphi et al., 2018, and references therein) (these are reviewed and display significant centennial-scale variability during the time period represented by the NAVC.

Our goal here is to determine whether it is possible to generate a similar record of ^{10}Be deposition from NAVC sediments that can be correlated with the Greenland records, thereby potentially improving the absolute dating of events recorded in the NAVC and our ability to relate them to climate changes recorded in ice cores. To pursue this, we describe (i) basic observations relating to ^{10}Be deposition and systematics in glacial and paraglacial lake sediments of the NAVC, (ii) experiments designed to determine whether or not variations in ^{10}Be fallout due to solar variability are recorded in the NAVC, and (iii) a comparison between ice core ^{10}Be fallout records and ^{10}Be ~~deposition fallout~~ records from portions of the NAVC.

20 1.1 The North American Varve Chronology

The NAVC consists of annually laminated sediments that were deposited in several lakes adjacent to the margin of the retreating Laurentide Ice Sheet (LIS) in New York and New England between approximately 18,500 and 12,500 years ago (Figures 1, 2). These sediments occur in numerous stratigraphic sections throughout the region that were originally correlated and assembled into several floating varve chronologies by Antevs (1922, 1928). These have subsequently been consolidated, corrected in a few places, and extended into a single 5659-year sequence ~~(Ridge, 2012; Ridge et al., 2012, and references therein by Ridge et al. (2012). In this section we briefly summarize the stratigraphy and sedimentology of NAVC sediments as they are relevant to this study; a complete review can be found in Ridge et al. (2012) and Ridge (2012).~~

The majority of the NAVC is composed of sediments deposited in proglacial lakes that occupied the north-south-trending Connecticut River Valley from central Connecticut to northern Vermont as the margin of the LIS receded northward. Although the extent of Connecticut Valley lakes varied with ice margin position, glacioisostatic rebound, and changes in outlet position and lake level, some portion of the lake system was continuously present and in contact with the ice margin until approximately 13,700 years ago, at which point changes in the sedimentological characteristics of the varves show that the lake was no longer receiving direct glacial meltwater. The complete chronology includes ~~4183~~ ~4200 glacial varves overlain by ~~1476 paraglacial varves, although~~ ~1500 paraglacial varves; the glacial-paraglacial

transition is ~~gradational over 100-200 years and also most likely~~ not isochronous across the entire lake system and also gradational over ~100-200 years at some sites.

5 Glacial varves in the NAVC are, in general, substantially thicker than paraglacial varves, and are derived predominantly from direct glacial meltwater and sediment production, although paraglacial sources including surface runoff from the recently deglaciated landscape adjacent to the lake may contribute. At ~~a specific any one~~ location in the lake, the contribution of paraglacial sediment to glacial varves increases upsection as the distance to the receding ice margin increases. Glacial varves, especially in areas proximal to the glacier, have melt season (summer) layers composed of a stack of micrograded beds that often fine upwards. Summer layers grade into a non-melt season (winter) layer composed of nearly pure clay, of which 60% or more is typically less than 1 micron grain-in size. Glacial varve sections also occasionally
10 have extremely thick varve couplets (over 50 cm) with single thick graded beds produced by the sudden release of water from proglacial lakes impounded in tributary valleys (see, for example, Thompson et al., 2017). Paraglacial varves are thinner, typically millimeter-scale, and composed predominantly of glacial sediment till, outwash, and other ice-marginal sediments that were deposited on the surrounding landscape ~~eroded following deglaciation and then subsequently and subsequently eroded and~~ transported to the lake by surface runoff after deglaciation.

15 Paraglacial varves in the NAVC are considered to be varves formed with zero or negligible direct glacial input, although the transition between glacial and paraglacial varves is typically gradational. They are composed of silty and fine sandy summer layers, and may have occasional graded fine sand beds much thicker than a typical summer layer ~~and~~ that represent unusual runoff or flood events that washed sandy sediment onto the lake floor. Winter layers in paraglacial varves have diffuse contacts with summer layers below and sometimes show single, internal silt to fine sand laminations
20 that may represent fall overturning.

1.2 Existing calendar year calibration of the NAVC

Although the NAVC is continuous for its entire length, the lakes in which varves were deposited drained ~12,000 yr BP, so the varve chronology does not have an absolute connection to the calendar year time scale. ~~Given that the~~ The majority of the NAVC that lies near or below the glacial-paraglacial transition is replicated in multiple sections (Fig. 2) and is therefore believed to have zero or negligible counting uncertainty; a number of spurious or missing varves at individual sections have been identified and removed from the chronology (Ridge et al., 2012). The uppermost part of the NAVC consists of thin paraglacial varves that only occur at one section (Newbury; see Figs. 1, 2), and Ridge and Toll (1999) estimated that counting uncertainty in the unreplicated part of the Newbury section above ~ NAVC is-7500 is (+35/-20) years at the top of the section. However, this counting uncertainty is not relevant for the present paper because we will
25 not consider any ice core-NAVC correlations for varves above the glacial-paraglacial boundary. Therefore, if we assume that the NAVC is linear with respect to true calendar years, ~~that is, that it lacks gaps or spurious varves,~~ the calibration of the NAVC to the true calendar year time scale is can be represented by a single value for the offset between NAVC years and calendar years. The offset throughout this paper is defined as the age in years BP of NAVC year zero, where “years BP” means “years before 1950,” as typically defined for purposes of radiocarbon age calibration. NAVC years are
30

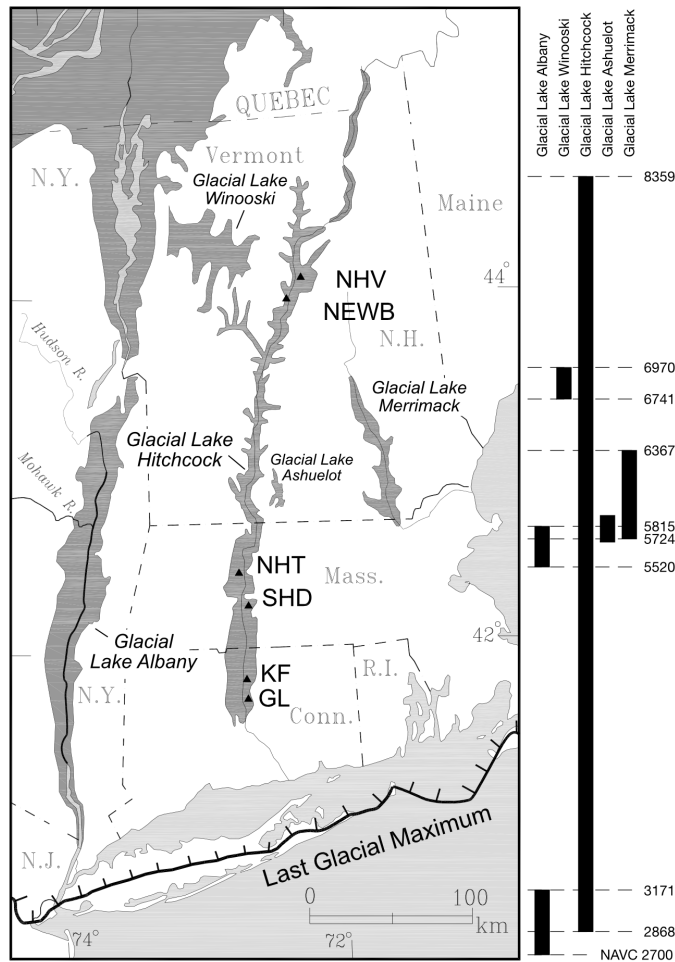


Figure 1. Map of New England and adjacent parts of the eastern United States and Canada showing the location and extent of the NAVC (Ridge et al., 2012). The NAVC consists of sediments from several proglacial lakes that existed at different times. The dark shaded areas show the maximum extent of major proglacial lakes present during deglaciation, although lake boundaries were time-transgressive throughout deglaciation and these do not represent exact lake boundaries at a specific time. Labeled triangles show the location of sections sampled for this study (the abbreviations follow Table 1), with the exception of 930PN, which is located off the map to the west in central New York. ~~Dark shaded areas show Nearly the maximum extent of major proglacial lakes present during deglaciation, although lake boundaries were time-transgressive throughout deglaciation and these do not represent exact lake boundaries at a specific entire time .Dark lines represent segments span of the NAVC that is represented by sediments from Glacial Lake Hitchcock, and sequences from other nearby glacial lakes are present correlated to the Lake Hitchcock sequence as shown in each lake, with bounding NAVC years for each segment~~the stratigraphic diagram at right. Although lake sediments at any particular point span a range of NAVC years, deglaciation of the area proceeded from south to north, so, in general, younger (higher-numbered) varves are found at more northerly sites (Figure 2).

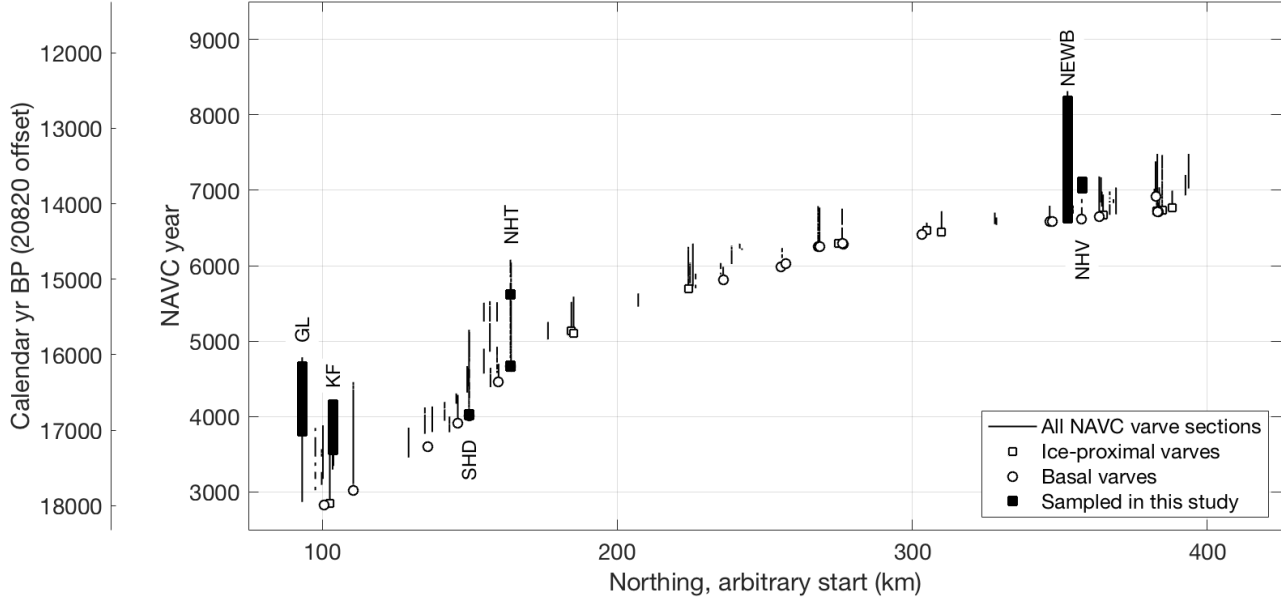


Figure 2. Time-distance diagram for NAVC varve sections, highlighting sections sampled in this paper. Thin lines show age range and location of varve sections in central New England that are correlated to the NAVC. Circles and squares highlight basal or ice-proximal varves, respectively, that indicate the location of the ice margin in a given varve year. Thick lines at labeled sections indicate portions of these sections analyzed in this study. As in Figure 1, the 930PN section in New York is not shown here. The calendar year BP time scale at left uses the value of 20820 yr for the NAVC yr - cal yr BP offset from Thompson et al. (2017); see discussion in section 1.2.

positive and increasing towards the present, and calendar years BP are positive and decreasing towards the present, so the offset is equal to the sum of the NAVC year of any varve and the calendar year BP in which that varve was deposited. Although previous publications (e.g., Ridge et al., 2012; Thompson et al., 2017) variously report estimates for (NAVC-calendar year BP) and (NAVC-calendar years before 2000) offsets, in this paper we use only the NAVC-calendar year BP offset to minimize confusion. Later in this paper, we will also correlate the NAVC with ice core records on the GICC05 timescale (Andersen et al., 2006). Again, throughout this paper we apply the GICC05 timescale in years BP rather than years before 2000 as sometimes used elsewhere. As the GICC05 timescale is not exactly linear with the true calendar year timescale because of inaccuracies in ice core layer counting (Adolphi et al., 2018, and references therein), NAVC-cal yr BP and NAVC-GICC05 yr BP offsets may not be exactly the same, and we will use both of these terms as appropriate throughout this paper.

The value of the NAVC-cal yr BP offset has been determined by fitting radiocarbon ages of plant macrofossils associated with individual varves to the INTCAL09 (in Ridge et al., 2012)) and subsequently INTCAL13 (in Thompson et al., 2017) calibrated radiocarbon time scales. Thompson et al. (2017), using the INTCAL13 calibration, obtained a best estimate for the NAVC-cal yr BP offset of 20820 yr. The uncertainty in this estimate is not well quantified, because residuals

between the measured ^{14}C ages and those predicted by the best-fitting offset to INTCAL13 scatter significantly more than expected from measurement uncertainty (~~see discussion in Ridge et al. (2012) and below in section 4.2.4~~) and are not normally distributed (see discussion in Ridge et al., 2012, and also in section 4.2.4). Ridge et al. (2012) estimated the uncertainty in the calibrated value of the offset to be approximately \pm on the order of ~ 200 yr, ~~but and~~ also interpreted the distribution of the residuals to indicate that the most likely source of excess scatter was small amounts of sample contamination by postdepositional carbon. ~~This, in turn, if true, this~~ would imply that the true value of the offset is likely larger by ~ 100 - 200 years higher than the 20820 yr estimate.

Both Ridge et al. (2012) and Thompson et al. (2017) proposed that the estimate of the NAVC-cal yr BP offset could be further refined by aligning prominent climate ~~events~~ variations evident in Greenland ice core records with ~~prominent~~ changes in varve thickness and/or ice margin position recorded in the NAVC. ~~They matched climate events~~ For sections of the NAVC near 14,000 yr BP to yield, this alignment yielded a NAVC-GICC05 offset of 20820 yr, which is the same as the best-fitting offset inferred from matching ^{14}C data to INTCAL13. This result implies a zero offset between INTCAL13 calendar years and GICC05 years at 14,000 yr BP, which is within the range of existing estimates (Adolphi et al., 2018). ~~Ridge et al. (2012) also matched events in NAVC varve thickness records with climate events in the range~~ For sections of the NAVC between 16,000-18,000 BP to infer, their alignment of NAVC and ice core climate proxies yielded a NAVC-GICC05 offset of 20750 years ~~at this time~~, which may be consistent with the observation that GICC05 likely undercounts ice layers in the 13,000 - 20,000 yr BP interval (Andersen et al., 2006; Rasmussen et al., 2008; Adolphi et al., 2018). However, as noted above, radiocarbon calibration of the NAVC still suggests that the NAVC-INTCAL13 offset may be ~ 100 - 200 years larger than 20820 yr. In addition, it is important to note that ~~event correlation between the matching~~ variations in NAVC and ice core climate proxy records relies on the assumption that the responses of $\delta^{18}\text{O}$ variations in Greenland ice cores and varve thickness records in New England to climate changes have similar lag and relative amplitude, which has not been independently established. Also, matches based on ~~event~~ these correlations were derived by looking for ~~matches~~ possible correlations that were close to the NAVC-calendar year offset already estimated from the ^{14}C data. Both ice core and varve records ~~display centennial-scale periodicity~~ show periodic variability, so multiple matches could be possible in some time ranges.

1.3 Beryllium-10 in lacustrine sediments

Beryllium-10 fluxes to the Earth's surface in polar regions reconstructed from ^{10}Be concentrations in ice cores have been widely used as a proxy for solar variability on interannual to centennial timescales (e.g., Beer et al., 1990; Yiou et al., 1997; Finkel and Nishiizumi, 1997; Steig et al., 1998), and ^{10}Be fluxes to marine sediments have been used to infer paleomagnetic field strength changes on timescales from thousands to millions of years (e.g., Simon et al., 2016, and references therein). By comparison, relatively few studies have attempted to identify solar variability on decadal to centennial timescales using ^{10}Be measurements on lacustrine sediments. Ljung et al. (2007) found that ^{10}Be fluxes recorded in lacustrine sediments deposited between AD 900-1450 were similar to those recorded in Greenland ice cores for the same time period. More relevant to this study, Mann et al. (2012) and Czymzik et al. (2016, 2018) measured ^{10}Be

concentrations in annually laminated modern and late-glacial sediments, respectively, from European sites and concluded that variability in ^{10}Be fluxes to the lake was attributable to both direct variations in fallout to the lake due to solar variability ~~;~~ and variability in environmental factors affecting transport and scavenging of fallout ^{10}Be in the lake. These authors suggested several approaches to accounting for these factors in reconstructing the ^{10}Be fallout flux, mainly focused on
5 multiproxy analysis of lake sediment and the use of multivariate correlation analysis to isolate variability in ^{10}Be flux that could not be explained by measured environmental proxies. In this work, we attempt to simplify approaches used in those studies by measuring both ^9Be and ^{10}Be in lake sediments and applying the following interpretive framework.

Our basic approach is to (i) use $^{10}\text{Be}/^9\text{Be}$ concentrations in sediment as a measure of both the delivery of background Be to the lake and any environmental factors affecting Be scavenging efficiency in the lake, and then (ii) identify additional
10 variation in the ^{10}Be flux that cannot be accounted for by these effects and must therefore represent variability in the atmospheric fallout flux. We quantify this with a simple model for Be fluxes to glacial lake sediments. Because we are working with annually laminated sediments, we can directly measure Be fluxes to the sediment (throughout this paper represented in units of atoms $\text{cm}^{-2} \text{yr}^{-1}$) as the product of the Be concentration in sediment (atoms g^{-1}) and the mass accumulation rate ($\text{g cm}^{-2} \text{yr}^{-1}$) computed from annual layer thickness (cm yr^{-1}) and density (g cm^{-3}).

15 We assume that measured Be fluxes to lake sediments derive from one source of ^9Be and two sources of ^{10}Be . First, sediment delivered to the lake either from glacial discharge or landscape runoff contains “inherited” ^9Be and ^{10}Be . Inherited ^9Be includes adsorbed ^9Be resulting from subglacial and subaerial mineral weathering. Inherited ^{10}Be could arise from a number of processes, presumably mainly including subglacial recycling of sediment with adsorbed ^{10}Be from a past history of surface exposure as well as interaction between subglacial sediment and fallout ^{10}Be already present
20 in ice sheet ice. We refer to all Be arising from ~~all~~ these sources collectively as “inherited” Be. ~~Although our analytical procedure might extract in-situ-produced cosmogenic ^{10}Be in mineral constituents of sediment, this can be assumed negligible because on a per-area basis the in-situ production rate is three orders of magnitude less than the atmospheric deposition rate. Structural ^9Be in Be-bearing minerals (e.g., beryl) is not extracted by our analytical procedure and is disregarded.~~

25 Because Be is insoluble and effectively adsorbed to sediment at neutral pH, we expect that sediment delivered to the lake by glacial meltwater discharge will include inherited ^9Be and ^{10}Be with a characteristic $^{10}\text{Be}/^9\text{Be}$ ratio. The factors controlling the $^{10}\text{Be}/^9\text{Be}$ ratio of glacial sediment are, presumably, complex, and include the Be concentration of sediment source material, water-rock interactions in the subglacial environment, the concentration of ^{10}Be in ice, and the rate and extent of basal and surface melting. However, we assume that whatever these processes, subglacial sediment
30 mixing is effective across a significant area of the ice sheet and results in a characteristic $^{10}\text{Be}/^9\text{Be}$ ratio in subglacially discharged sediment that can be assumed to be constant, or at least slowly varying, over the 100- to 1000-year timescales represented by our sample sets.

Second, once glacial sediment with a characteristic $^{10}\text{Be}/^9\text{Be}$ ratio is delivered to a proglacial lake, additional ^{10}Be can be supplied to the lake from atmospheric fallout and adsorbed to the sediment during transport or deposition, but ^9Be
35 cannot. Thus, ~~lake sediment contains~~ Be in lake sediment includes inherited ^9Be , inherited ^{10}Be , and fallout ^{10}Be .

With these assumptions, Be concentrations in lacustrine sediment (which we can measure) can be related to the flux of atmospheric fallout ^{10}Be (which we seek to reconstruct) by:

$$Q_{10,T} = Q_{9,T}R_S + Q_{10,A}f \quad (1)$$

where: $Q_{10,T}$ is the total ^{10}Be flux ($\text{atoms cm}^{-2} \text{ yr}^{-1}$) to the sediment, which is the product of the measured ^{10}Be concentration (atoms g^{-1}) and the mass accumulation rate ($\text{g cm}^{-2} \text{ yr}^{-1}$); $Q_{9,T}$ is the corresponding total ^9Be flux ($\text{atoms cm}^{-2} \text{ yr}^{-1}$; calculated in the same way as $Q_{10,T}$); $Q_{10,A}$ is the flux of atmospheric fallout ^{10}Be to the surface ($\text{atoms cm}^{-2} \text{ yr}^{-1}$), R_S (nondimensional) is the characteristic $^{10}\text{Be}/^9\text{Be}$ ratio of sediment supplied to the lake, and f (nondimensional) is a focusing factor. The two terms on the right-hand side of the equation represent the two possible sources of ^{10}Be described above: inherited ^{10}Be ($Q_{9,T}R_S$) and fallout ^{10}Be ($Q_{10,A}f$).

The focusing factor f reflects the fact that ^{10}Be deposition occurs throughout the lake and, perhaps, an adjoining watershed on the ice sheet and/or the surrounding ice-free landscape, whereas sediment deposition only occurs in a fraction of the lake basin. Thus, in area-normalized units ($\text{atoms cm}^{-2} \text{ yr}^{-1}$), the deposition rate of fallout ^{10}Be to lake sediment ($Q_{10,A}f$) is greater than the fallout rate from the atmosphere ($Q_{10,A}$) to the watershed. The focusing factor depends on the geometry of the lake and its watershed; for example, Ljung et al. (2007) estimated $f \simeq 20$ for a small lake, Belmaker et al. (2008) estimated $f \simeq 15$ for the much larger Lake Lisan, and the results of Aldahan et al. (1999) implied $f \simeq 3$ for the still larger Lake Baikal. Absent significant changes in the geometry of the lake and watershed, however, f is expected to be constant or changing slowly, so because we are interested in the short-term variability of the atmospheric fallout flux rather than its absolute value, it is sufficient for our purposes to estimate the quantity $Q_{10,A}f$. Therefore, given the framework of Equation 1 and measured total ^9Be and ^{10}Be fluxes to the sediment, the primary obstacle to reconstructing atmospheric fallout fluxes of ^{10}Be is the need for an estimate of R_S , which we discuss in detail later from the perspective of analyzing each of our data sets.

~~Equation 1 represents a very simple model for~~ The purpose of the model described by Equation 1 is to separate environmental effects influencing the delivery of Be to the lake from variations in ^{10}Be supply to lake sediments, and fallout to the lake and watershed. If the assumptions of the model and the estimate of R_S used in applying it are correct, variations in $Q_{10,A}f$ reconstructed by this method should correctly represent variations in fallout and not in Be transport processes. However, the model is very simple and several complications may be relevant for our data. One is that R_S and f will likely change over time, ~~both as the fraction due to (i) retreat of the ice margin that results in an increase in the proportion of sediment supplied by direct subglacial discharge decreases and that supplied by runoff from the deglaciated landscape increases, and also during the deglaciated portion of the watershed, (ii) changes in ice-marginal drainage, and eventually (iii) reduction in glacial meltwater and sediment supply in the~~ transition from a glacial to ~~paraglacial lake environment~~ paraglacial lake. As noted above, however, it is likely that these changes will either be (i) steady, gradual changes associated with ice margin retreat from the lake basin, or (ii) large instantaneous changes associated with lake inlet or outlet switching or reconfiguration of ice-marginal drainage. It appears unlikely that these processes would be

manifested as periodic, decadal to centennial-scale, variations that might mimic the solar variability we seek to identify. A second complication is the possible role of watershed processes; if fallout ^{10}Be were sourced from a significant ice-free watershed surrounding the lake, variations in ^{10}Be fallout rates might be buffered by water-soil interactions in the watershed and reduce observed fallout variability in the lake (e.g., Czymzik et al., 2016). Finally, the potential importance of ^{10}Be already present in ice sheet ice that could be released by surface melt is unknown. The expected contribution from typical ^{10}Be concentrations in ice sheets (order 10^4 atoms g^{-1}) at moderate melt rates averaged over the ablation zone (order 10 cm yr^{-1}) would be small (order 10^5 atoms $\text{cm}^{-2} \text{yr}^{-1}$) compared to the atmospheric fallout flux ($\sim 1.5 \times 10^6$ atoms $\text{cm}^{-2} \text{yr}^{-1}$) (order $\sim 1.5 \times 10^6$ atoms $\text{cm}^{-2} \text{yr}^{-1}$; see Graly et al., 2011). On the other hand, if melt rates averaged over the contributing ablation area reached meters per year, which could be possible during periods of rapid retreat, this contribution might be significant.

2 Methods

2.1 Sample collection

We collected several sample sets from a total of 7 varve sections, with various sampling strategies designed to address different aspects of the study (Table 1 and discussion below). Samples were extracted from (i) short cores collected from surface outcrops by cleaning outcrops and driving in short (typically 0.6-m) sections of PVC pipe with a steel cap and sledge hammer, and (ii) deep (up to 50 m), continuously sampled hollow-stem auger cores collected in 2007-2009. Cores are archived at Tufts University. All cores were split after collection and partially dried to improve visual identification of layers and facilitate sampling of individual varves. Only cores with minimal coring deformation were sampled. We sampled seasonal layers of single varves, complete single varves, and continuous sets of contiguous varves by scraping core surfaces and/or cutting interior sections of the cores to remove any possible surface contamination, then separating varves along partings between layers and scraping top and bottom surfaces to isolate the varve(s) of interest. Each sample was a column or wedge cut such that the cross sectional area was constant for all varves incorporated in the sample. As in previous work relating to the NAVC (Ridge et al., 2012), we consider a single varve to extend from the bottom of the coarse-grained summer layer to the top of the fine-grained winter layer.

2.1.1 Short biennial records

At two sites, one with glacial varves (the Kelsey-Ferguson, or KF, section; Figs 1, 2; Table 1) and one with paraglacial varves (the North Haverhill, or NHV, section; Figs 1, 2; Table 1), we collected continuous sets of samples spanning 80-year periods at 2-year resolution. The purpose of these sample sets is to determine whether decadal-scale solar variability, specifically the ~ 11 -year Schwabe cycle, can be identified in ^{10}Be fluxes to NAVC sediments (see section 4.1 below).

2.1.2 Long decadal records

At two sites, we collected sets of samples designed to produce records of ^{10}Be deposition over 1000-1500-year periods with decadal (ca. 25-yr) resolution, that could potentially be correlated with ^{10}Be records from ice cores (see section 4.2 below). One set of samples is from glacial varves at the Kelsey-Ferguson (KF) and nearby Glastonbury (GL) sites
5 in central Connecticut (Figs 1, 2; Table 1) that overlap and together span NAVC years 3658-4675. The second set is a sequence of glacial grading into paraglacial varves from Newbury, Vermont (NEWB; Figs 1, 2; Table 1) that spans NAVC years 6631-8193.

2.1.3 Winter/summer pairs

To investigate the seasonal distribution of Be deposition, we separately analyzed winter and summer layers from individual
10 varves at four sites (Figs 1, 2; Table 1): (i) glacial varves from the Kelsey-Ferguson (KF) site; (ii) paraglacial varves from North Haverhill (NHV); (iii) glacial varves at a site in North Hatfield, MA (NHT); and (iv) glacial varves from a section in the Mohawk Valley of central New York State (930PN) that is not correlated with the NAVC, but was deposited approximately 17,000 yr BP. Varves at 930PN are unusual among NAVC sites in that their parent material is limestone, so they are mostly carbonate.

15 2.1.4 Ice-proximal sediment and underlying till

To investigate inherited Be concentrations in subglacial sediment that serves as the parent material for varved lake sediments, we analysed basal ice-proximal varves and underlying diamicton at South Hadley (SHD) and North Hatfield, MA (NHT) from hollow-stem auger cores ~~collected in 2009~~ that penetrated the base of these varve sections. The basal varves are relatively coarse, 2-6-cm-thick varves deposited at the bottom of these sections, presumably close to the ice
20 margin. The diamicton at SHD is a stony subglacial till ~~derived from Mesozoic red beds~~, whereas that at NHT mixes till and glaciolacustrine sediment and likely represents a subaqueous debris flow near the ice sheet grounding line.

2.2 Grain size measurements

We measured grain size distributions for all samples using a combination of mechanical sieving (for grain sizes larger than $4\ \Phi$) and pipette analysis for smaller grain sizes (e.g., Lewis and McConchie, 2012). Throughout this paper we represent
25 grain size using the logarithmic phi scale of Krumbein (1934), which is commonly used in sedimentology: Φ is the negative base-2 logarithm of the grain diameter in millimeters, so larger values of Φ represent smaller grain sizes. We halted the pipette analysis at $11\ \Phi$ ($\sim 0.5\ \mu\text{m}$), but significant fractions (up to ~~50~~60%) of all samples were finer than this (Figure 3). Thus, to calculate mean grain size and sorting parameters (see, e.g., Boggs, 2014) that require the complete distribution, we fit a log-normal distribution to the observed data for each sample and used the fitted log-normal distribution to compute
30 mean grain size and sorting (Fig. 3).

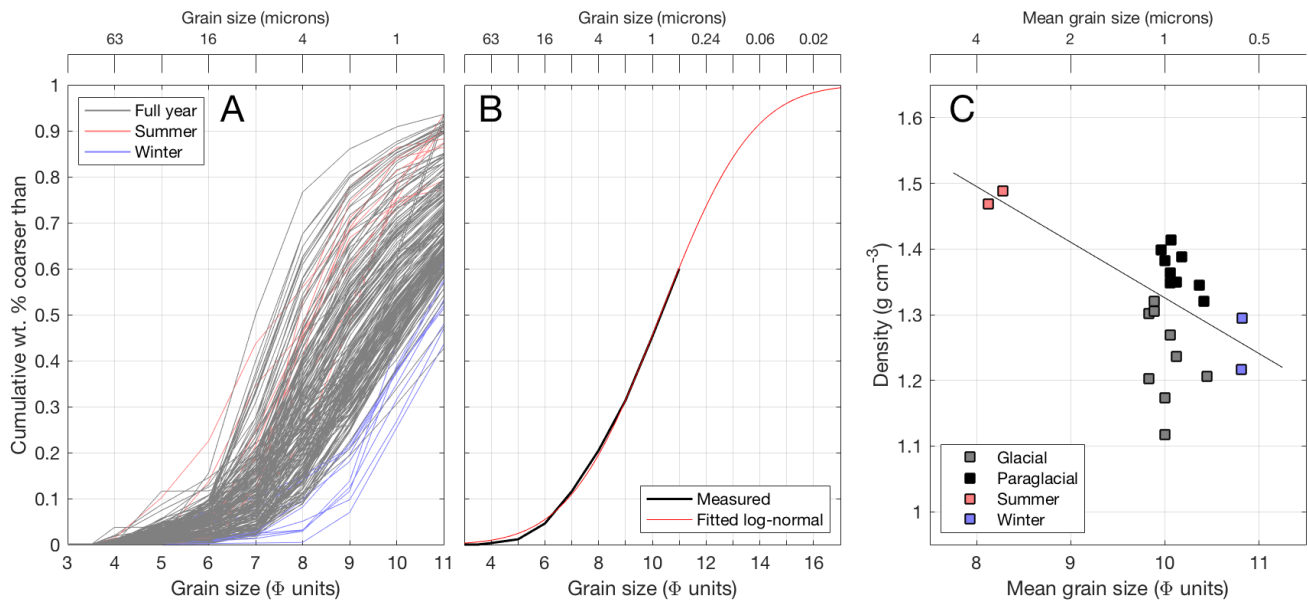


Figure 3. Grain size and sediment density measurements. **A**, measured cumulative grain-size distributions for summer layers (red), winter layers (blue), and complete single or multiple varves (gray). Pipette analysis stopped at 11 Φ . **B**, example of extrapolating measured grain-size data for a representative sample (NAVC 7068-69 from the NHV section) using a fitted log-normal distribution. **C**, [relationship between sediment density-grain dry density and grain size relationship](#). The linear approximation shown by the black line (which is fit to all data excluding three low outliers that likely result from failure to completely fill the reference volume with stiff glacial sediment) is used in subsequent flux calculations.

2.3 Sediment density

Measurements of sediment density are required to interpret a Be concentration by weight (atoms g^{-1}) as a Be flux to the sediment (atoms $\text{cm}^{-2} \text{yr}^{-1}$). We measured the dry density of representative samples of glacial varves at the Kelsey-Ferguson (KF) site, paraglacial varves from the North Haverhill (NHV) site, and separate summer and winter layers from North Hatfield (NHT) by pressing a cylinder of known volume into wet sediment and drying and weighing the resulting sample (Fig. 3; Supplementary Table S2). This procedure has several potential sources of inaccuracy, primarily due to the stiff and friable nature of the sediment, which causes difficulty in completely filling the standard volume without deforming or compressing the sediment or introducing voids. It is important to note that the purpose of this study is to identify variations in Be flux to the sediment, not to make an accurate estimate of the absolute flux, so from this perspective inaccuracies in density measurements are not necessarily significant. On the other hand, if we assumed a constant density when, in fact, periodic variations in density were present, we could infer spurious Be flux variations. Density variations, in turn, are most likely to be the result of variations in grain size and therefore in porosity and the relative proportion of silt and clay, and our measurements show this effect (Figure 3). Thus, for subsequent Be flux calculations

we compute the density of all samples from mean grain size measurements using the linear relationship shown in Figure 3, with an uncertainty derived from the standard deviation of the residuals ($\pm 0.05 \text{ g cm}^{-3}$).

2.4 Beryllium-9 by ICP-OES

We measured concentrations of adsorbed ^9Be using the procedure described in Greene (2016), which involves drying and powdering sediment samples, leaching in 6M HCl for 24 hr, then diluting to a suitable concentration for analysis and measuring the Be concentration with a JY Horiba Optima inductively coupled plasma optical emission spectrometer (ICP-OES). [Greene \(2016\) discusses step-leaching experiments and other quality-control data assessing the reliability of the procedure. This procedure extracts only adsorbed Be and not structural Be contained in Be-bearing minerals \(e.g., beryl\).](#) Although the nominal internal precision of the ICP-OES measurement inferred from replicate analysis of liquid standards was typically 1-2%, replicate analyses of splits of the powdered sediment samples showed a total uncertainty of 3.5%. Thus, we assume that all ^9Be measurements have 3.5% uncertainty.

2.5 Beryllium-10 by accelerator mass spectrometry

We measured ^{10}Be concentrations in sediment samples at the University of Vermont (UVM) using an adaptation of the potassium bifluoride fusion method of Stone (1998). We dried sediment samples, homogenized them by powdering in a Spex shatterbox mill, and subsampled 0.5 g of the homogenized sediment. We mixed the sample with KHF_2 and Na_2SO_4 , and spiked the mixture with 0.4 mg of [Be-carrier-one of several Be carriers](#) prepared from deep-mined beryl and having $^{10}\text{Be}/^9\text{Be}$ [between-in the range](#) $2\text{-}8 \times 10^{-16}$. We then extracted Be by fusion of the sample, leaching of the fused sample in water, precipitation of excess K as KClO_4 , and precipitation of Be hydroxide. We modified the published method by adding an ion exchange step in which we redissolved Be hydroxide in dilute HCl, loaded it onto cation exchange resin (Bio-Rad AG50W X8), eluted B and other cations in dilute HCl, recovered Be in 6M HCl, evaporated to dryness, redissolved in dilute HCl, and precipitated Be hydroxide. Finally, we converted Be hydroxide to BeO for Be isotope ratio measurement by accelerator mass spectrometry (AMS) at the Scottish Universities Environmental Research Centre (SUERC) in East Kilbride, Scotland. For these analyses, we sputtered samples and isotope ratio standards in the ion source for the same amount of time in order to suppress any effect of variations in emittance during sputtering. All ^{10}Be measurements are normalized to the NIST SRM4325 standard material with an assumed $^{10}\text{Be}/^9\text{Be}$ ratio of 2.79×10^{-11} , which is equivalent to the 07KNSTD standardization of Nishiizumi et al. (2007). We processed samples in batches of 16, each containing one process blank and at least one replicate of a sample that was also analyzed in a different batch (see below). The process blank for Be fusion extraction at UVM utilizes a sample of fine-grained fluvial sediment chosen because of its naturally low bulk ^{10}Be concentration, and subsequently powdered, homogenized, and etched in dilute HNO_3 in a heated sonic bath for an extended period to remove [any](#)-adsorbed Be. We processed 0.5 g aliquots of this material in the same way as the samples. Complete carrier and process blanks contained between 120,000 and 310,000 atoms ^{10}Be , representing 0.1-0.7% of total atoms measured in samples.

In contrast to the leaching procedure used to measure ^9Be concentrations, the total fusion method extracts both adsorbed ^{10}Be and mineral-bound ^{10}Be that could result from in-situ production of cosmogenic ^{10}Be in any fraction of the sediment that previously experienced surface exposure. However, concentrations of in-situ-produced cosmogenic ^{10}Be are expected to be negligible for the purposes of this study, both because in-situ cosmogenic production rates at moderate elevations (order $10\text{ atoms g}^{-1}\text{ yr}^{-1}$) are insignificant compared to deposition rates of atmospherically-produced ^{10}Be (order $10^6\text{ atoms cm}^{-2}\text{ yr}^{-1}$) and because NAVC sediments are mostly subglacially derived and therefore not previously exposed to the surface cosmic-ray flux. In-situ-produced cosmogenic ^{10}Be concentrations in glacial sediments associated with the Laurentide Ice Sheet, where measured (e.g., Balco et al., 2005), are on the order of $10,000\text{ atoms g}^{-1}$, which is negligible compared to total ^{10}Be concentrations of order 10^8 atoms g^{-1} measured in this study. We therefore assume that the technical inconsistency between our measurements of leachable ^9Be and total ^{10}Be is insignificant and disregard it.

To quantify total measurement uncertainty and as a general quality control measure, we prepared large quantities of two representative samples to be analyzed repeatedly throughout the project. The first of these consisted of varves NAVC 3569-3570 from the Kelsey-Ferguson site, collected as part of the 80-year biennial record described above, which we refer to here by the internal UVM sample name BD3. When the BD3 sample was exhausted after 15 measurements, we prepared a second sample for replicate analysis (BD-STAN) by mixing and homogenizing aliquots of several other glaciolacustrine sediment samples from this study. The BD-STAN sample was subsequently analysed 6 times.

The purpose of chemical purification of Be for AMS analysis is to produce a sample of BeO that is sufficiently pure to produce a Be ion beam of the same intensity as produced by pure reagent BeO used as an isotope ratio standard. Poor or inconsistent Be yield from chemical purification, or failure to consistently remove contaminants from the BeO target, can result in Be ion beam currents that are low and/or inconsistent compared to those from standards (see Hunt et al., 2008). This is undesirable because (i) low beam currents reduce measurement precision by reducing ^{10}Be count rates, and (ii) inconsistent beam currents can introduce systematic errors in isotope ratio measurements due to current-dependent variations in beam emittance, ion beam transport, or detector efficiency. Although the goal of AMS beamline and detector setup and adjustment is to remove or minimize any beam current dependence of ratio measurements, it is difficult to verify whether this has been achieved for an arbitrarily large range in beam current, so instrument tuning is not a complete substitute for consistent sample preparation.

AMS analysis of Be samples prepared in the first eight chemistry batches showed low and inconsistent beam currents (Figure 4; mean and standard deviation of sample beam currents relative to standards for these batches were 0.63 ± 0.25). We found that this effect was related to trace Cl remaining in samples after hydroxide precipitation, so we further modified the Be extraction procedure by redissolving Be hydroxide in dilute HNO_3 and reprecipitating. Be beam currents from samples in 17 chemistry batches after this modification were higher and less variable (Fig. 4; mean and standard deviation of relative sample beam currents after the modification were 0.87 ± 0.16).

Although this change to the sample preparation method significantly improved beam current performance, the complete data set displays high variability in Be currents. Thus, we used the results of replicate analyses, which spanned a

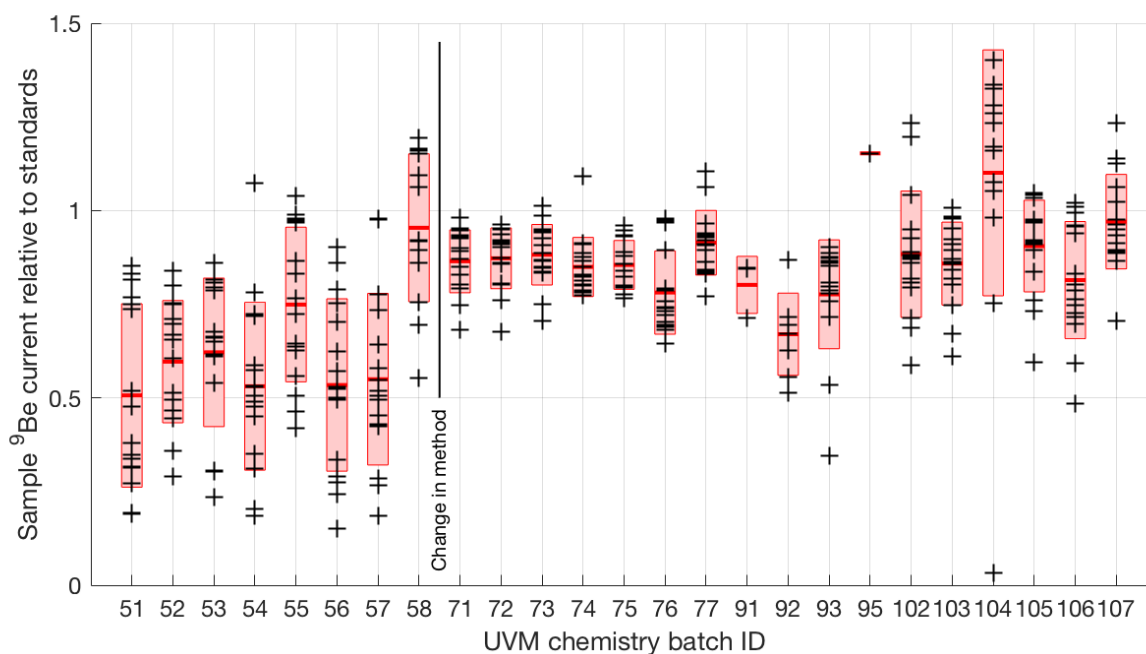


Figure 4. Be beam currents during AMS analysis at SUERC relative to Be isotope ratio standards. Each symbol shows the average beam current during analysis of a single sample, normalized to the average current of all primary standards analyzed during the same measurement period. Red lines and pink bars show means and standard deviations for samples processed in each chemistry batch. UVM batch ID numbers are assigned consecutively, so batches are shown in the order they were processed. Only samples of NAVC sediments that are part of this study are included in this plot; some batches included unrelated samples, which are not shown.

range of Be currents, to look for and quantify any beam current dependence in the AMS results. In both replicate analyses and in analyses of groups of samples with similar ¹⁰Be concentrations, we observed a relationship between Be beam current and apparent ¹⁰Be concentrations derived from AMS-measured ¹⁰Be/⁹Be ratios (Figure 5). Although apparent concentrations do not display a significant correlation with beam current for samples with beam currents similar to standards (between ca. 80-110% of standard currents), our data include a much wider range of beam currents, and when all data are considered, significant correlations are present (Figure 5). We observed this effect to be persistent through many AMS measurement periods during a 3-year period, and similar to the current dependence observed for many replicate measurements of in-situ-produced ¹⁰Be in the CRONUS-N quartz standard measured at the SUERC accelerator by Bierman et al. (2017) as well as for analysis of the CoQtz-N quartz standard at an anonymous AMS facility described by Binnie et al. (2019, ; their Fig. 3) Binnie et al. (2019, their Fig. 3).

We conclude from these observations that apparent measured ¹⁰Be concentrations for our samples that had anomalously low or high AMS beam currents are inaccurate due to beam current dependence of the measured isotope ratios. Lacking a physical model for the observed beam current dependence, we devised the following procedure to correct

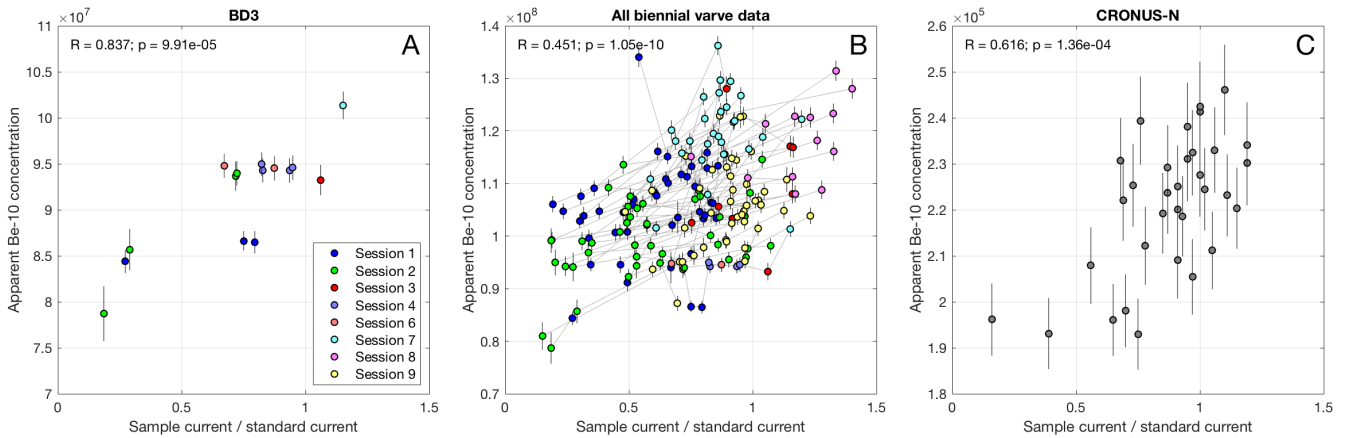


Figure 5. Observed relation between ^9Be beam current relative to standards and measured $^{10}\text{Be}/^9\text{Be}$ ratio, here expressed as nuclide concentration instead of ratio to account for small differences (ca. 5%) in sample and Be carrier masses between replicate analyses (see text). **A**, 15 replicate analyses of the BD3 sample (see text). **B**, replicate analyses of samples from 80-year biennial records at the KF and NHV sites (see text above); each of these samples was measured at least twice, and light-colored lines connect replicate analyses. Note that true ^{10}Be concentrations vary among samples in this data set, but a significant correlation with beam current is present regardless, and nearly all replicates of individual samples display a positive slope in this diagram. In the left-hand two panels, symbol color-coding indicates the AMS measurement session in which each analysis took place. Sessions 1-2 were measured in 2012, 3-5 in 2013, and 6-9 in 2014. **C**, equivalent data for in-situ-produced ^{10}Be in the CRONUS-N quartz standard (Jull et al., 2015) prepared in the UVM chemistry lab and measured on the SUERC accelerator between 2013-2017, as reported by Bierman et al. (2017).

for this bias. If (C/C_S) is the beam current for a sample relative to the average current for standards measured simultaneously, R_M is the apparent $^{10}\text{Be}/^9\text{Be}$ ratio observed for the sample, and R_C is a nominally correct $^{10}\text{Be}/^9\text{Be}$ ratio that would be observed for $(C/C_S) = 0.9$, then we can define an empirical linear correction factor S such that $R_M/R_C = S(0.9 - C/C_S)R_M/R_C + 1 - S(0.9 - C/C_S)$. In the case where blank corrections are small to negligible

5 (as is the case for these data; see above) the ratio of apparent and corrected nuclide concentrations N_M/N_C , where N_M and N_C are nuclide concentrations in atoms g^{-1} , is equal to R_M/R_C . Thus, to account for small variations in sample and ^9Be carrier masses among replicate samples, we correct apparent concentrations instead of ratios using $N_M/N_C = S(0.9 - C/C_S)N_M/N_C + 1 - S(0.9 - C/C_S)$. 0.9 is chosen as the normalizing value because it is the modal value of (C/C_S) for our complete data set, so minimizes required corrections. Choosing a normalizing value not equal

10 to one might introduce a small systematic bias in measured ^{10}Be concentrations relative to the primary measurement standards, but that would not affect any of the results in this study because we are concerned with variability in ^{10}Be flux and not with a precise measurement of the absolute flux.

We estimate S by choosing the value that minimizes scatter among replicate analyses of the same sample. The sample with the largest number of replicates (BD3; see discussion above) yields $S = 0.164$. The CRONUS-N data of Bierman

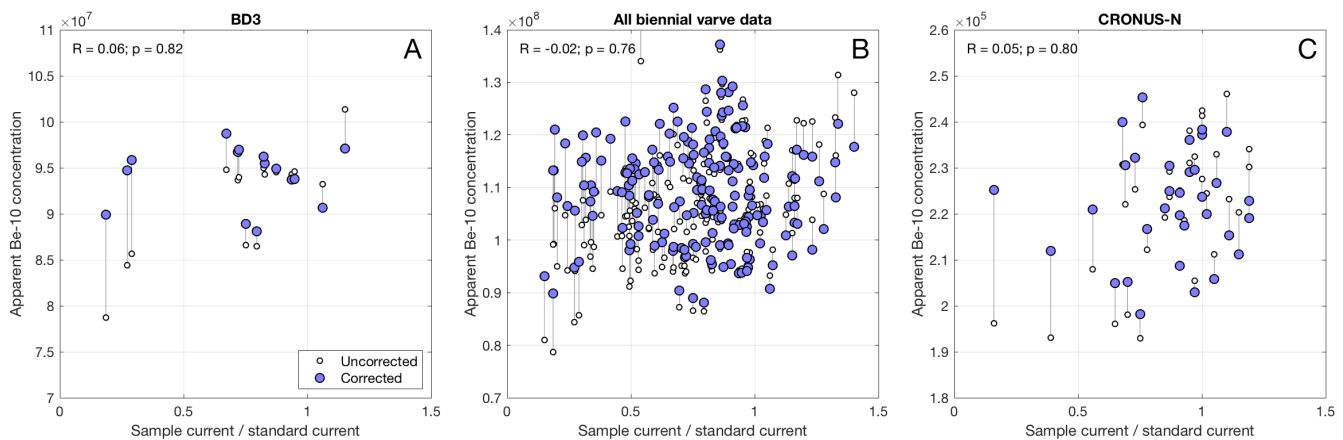


Figure 6. Correction for current dependence bias. Uncorrected data shown by open circles are the same data shown in Figure 5. Corrected concentrations shown by filled circles are connected by light lines to corresponding uncorrected concentrations; error bars are omitted for clarity. For measurements with beam currents comparable to standards, corrections are minimal and similar in size to estimated measurement uncertainties; corrections are most significant for measurements with extreme beam current values. The correlation coefficients and probabilities shown at upper left in all panels are for the corrected concentrations.

et al. (2017) yield $S = 0.185$, which highlights the apparent consistency of this effect across multiple samples, chemical preparation methods, and AMS measurement periods. Figure 6 shows the effect of applying this correction procedure with $S = 0.174$ (the average of the above two values) for the data in Figure 5. Corrected data are uncorrelated with relative beam currents. Note that this correction scheme has the property that corrections for measurements with beam currents comparable to standards (C/C_S between ca. 0.8-1.1, where no significant correlation between current and ratio is observed) are minimal and comparable to individual measurement uncertainties; corrections only become significant for samples with extreme relative currents. Figure 7 further highlights this point for the 80-year biennial record from North Haverhill (NHV), which was entirely measured in duplicate. The correction procedure improves agreement between the two sets of measurements primarily by correcting a minority of data that were biased low due to anomalously low beam currents, without having a significant effect on the majority of the measurements. For the remainder of this paper, we correct all ^{10}Be concentrations for beam current bias using $S = 0.174$. Although presumably this estimate of S has some uncertainty, a formal estimate of the uncertainty is not necessary because, as discussed below, we derive total measurement uncertainties for ^{10}Be concentrations from the statistics of replicate analyses after correction for beam current bias, rather than by propagation of errors through the correction process.

Nominal measurement uncertainties on corrected ^{10}Be concentrations include: (i) AMS measurement uncertainties derived from machine stability and counting statistics ($\sim 1\%$) and replicate analyses of secondary isotope ratio standards during AMS ~~measurements~~ measurement periods ($\sim 1\%$); (ii) uncertainty in ^9Be carrier concentrations ($< 1\%$); ~~and~~ (iii) ~~and~~ blank uncertainty ($\sim \leq 0.2\%$). ~~These red from~~; and (iv) uncertainty in S as discussed above (unknown). Combined,

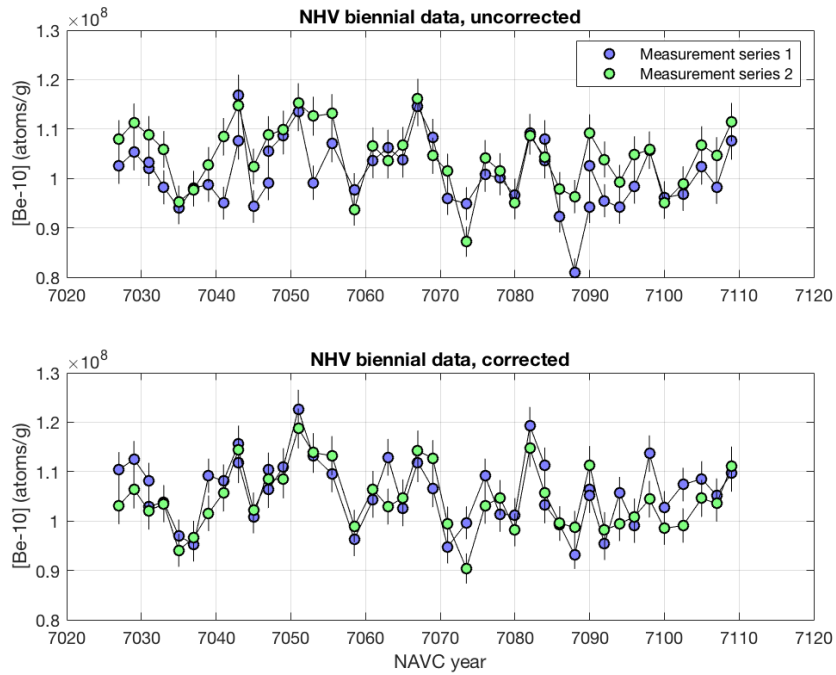


Figure 7. Effect of current dependence bias correction on agreement between replicate analyses of NHV biennial samples. All data are assigned 4% uncertainties as discussed below.

these indicate measurement uncertainties no less than 1.5-2% for most samples. However, as we found for IGP-OES ⁹Be measurements, reproducibility of Scatter in measured ¹⁰Be concentrations in replicate aliquots of homogenized sediment samples (after correction for current dependence bias as described above) is poorer than expected from the estimated internal measurement uncertainties.

5 Relative standard deviation for analyses of replicate splits of 84 sediment samples that were analyzed more than once. Data have been corrected for current dependence bias.

, however, is significantly higher, which indicates that propagation of known uncertainties would underestimate the true measurement uncertainty. Figure 8 shows the reproducibility of replicate analyses of a total of 84 samples. The mean relative standard deviation of all sets of replicate analyses is 4%, that for BD3 is 3.5% (for 15 measurements), and that for
 10 BD-STAN is 4.1% (for 6 measurements). We conclude that the true uncertainty in a given typical measurement from our sample set is near 4%, which is significantly greater than nominal measurement precision. This likely reflects likely reflects the known measurement uncertainties enumerated above, errors introduced by the correction for current dependence, and imperfect homogenization of sediment samples during preparation. Thus, we compute total uncertainties for all ¹⁰Be concentration measurements as follows. First, we assume that each individual measurement has 4% precision. Second,
 15 to incorporate the principle that repeated measurements of the same sample should improve total measurement preci-

sion, for samples analysed more than once, we calculate a weighted mean and standard error (although, as all individual measurements are assigned 4% uncertainty, they are weighted equally). Summary concentrations and uncertainties calculated via this approach appear in the supplementary tables and are used henceforth throughout the paper.

3 Results: general framework and systematics

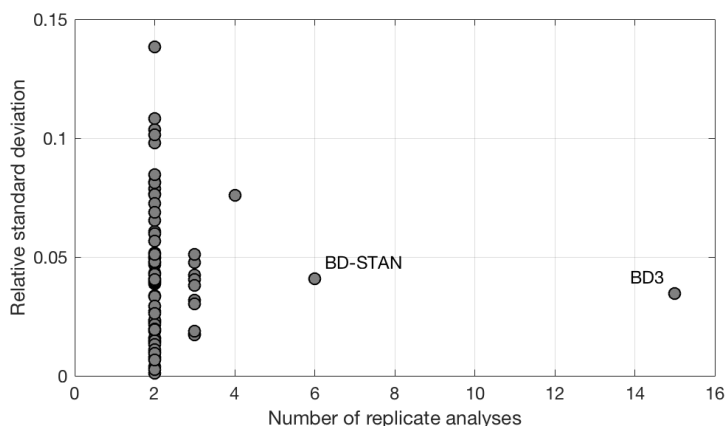


Figure 8. [Relative standard deviation for analyses of replicate splits of 84 sediment samples that were analyzed more than once. Data have been corrected for current dependence bias.](#)

5 3 Results and discussion I: general framework and systematics

Beryllium-10 concentrations for all NAVC varves (Fig. 9; Supplementary Table S1) are in the range $0.5\text{-}1.5 \times 10^8$ atoms g^{-1} , which is typical of concentrations observed in lacustrine sediments elsewhere (typically $1\text{-}10 \times 10^8$ atoms g^{-1} ; e.g., Ljung et al., 2007; Czymzik et al., 2016). Total leachable Be concentrations in sediments are 0.6-1.7 ppm, so $^{10}\text{Be}/^9\text{Be}$ ratios are in the range $1\text{-}2 \times 10^{-9}$. As expected from the inverse relationship between grain size and surface area (e.g., Pavich et al., 1984), the dominant control on adsorbed Be concentrations is grain size: both ^9Be and ^{10}Be concentrations are inversely correlated with mean grain size at all sites (Figure 10). However, $^{10}\text{Be}/^9\text{Be}$ ratios are not correlated with grain size, which is important because it supports the hypothesis used in formulating Equation 1 that inherited Be adsorbed to sediment has a characteristic $^{10}\text{Be}/^9\text{Be}$ ratio.

Variations in mean grain size, and thus in Be concentrations, at our sample sites reflect a balance of two primary effects. Initially, retreat of the ice margin from a site and therefore an increase in distance from the glacial sediment source will cause an upsection decrease in mean grain size. Subsequently, water depth decreases at the site due to sediment infilling of the lake and glacioisostatic rebound relative to an ice-distal outlet. Shallowing increases the energy of the depositional

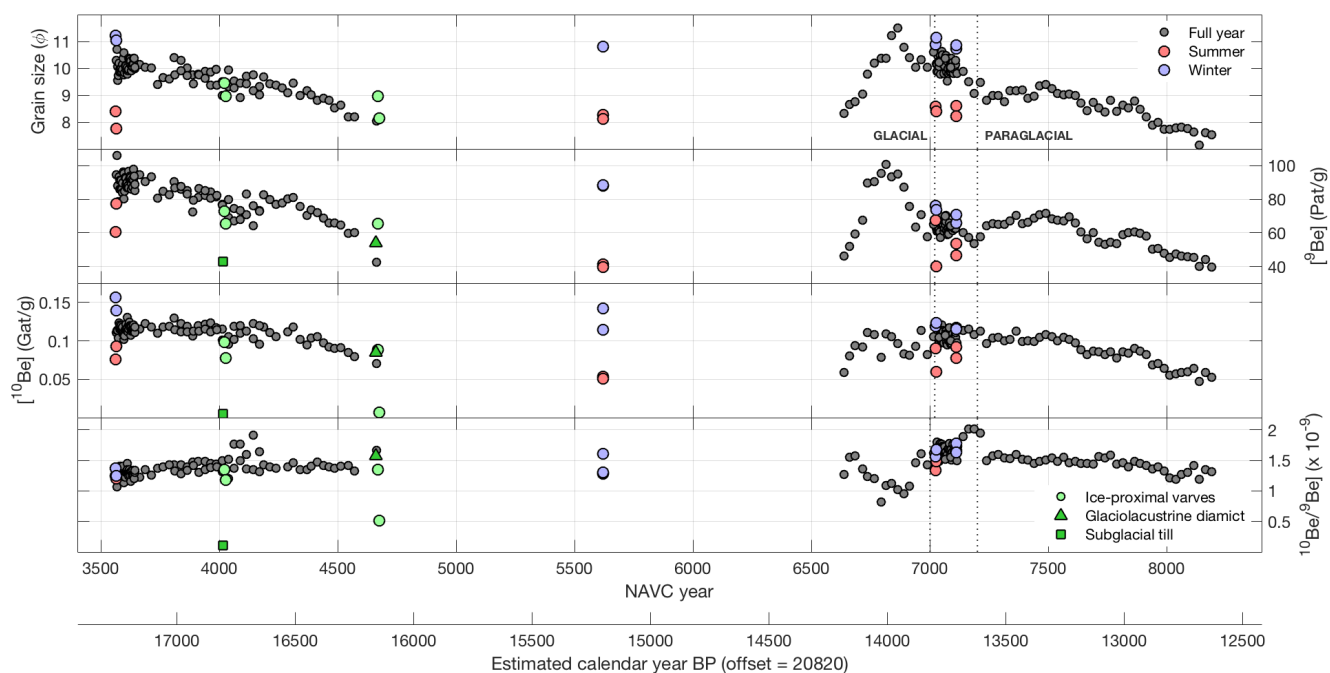


Figure 9. Mean grain-size and $^{10}\text{Be} - ^9\text{Be}$ concentrations for all samples, shown in stratigraphic order by NAVC year. Seasonal samples from site 930PN, which is not correlated with the NAVC, are not shown. The boundary between glacial and paraglacial varves is between NAVC 7020-7200, but is transitional at many sites and also not isochronous between sections. Error bars are not shown for clarity.

environment, both because of increased exposure to surface waves and because the decreasing cross-sectional area of the lake requires that current velocities increase to maintain constant discharge, and leads to an upsection increase in grain size. An additional possible effect that may be relevant at some sites is that as the ice margin retreats, sediment is increasingly sourced from the surrounding deglaciated landscape rather than direct ice sheet discharge, and paraglacial runoff sediment is likely coarser than subglacial sediment.

The long record at Newbury that we sampled with decadal resolution (NAVC 6631-8193; Fig. 9) shows these effects. Grain size decreases and Be concentrations correspondingly increase in the initial part of the record (NAVC 6600-6900) as the ice margin recedes from the site, but subsequently lake shallowing becomes more important and these trends reverse (NAVC 6900-8100). The long records at the Kelsey-Ferguson and Glastonbury sites (NAVC 3658-4669; Fig. 9), on the other hand, begin in relatively ice-distal varves, because these sites were deglaciated at about NAVC 2800. Thus, grain size increases and Be concentrations decrease throughout, following the pattern in the upper half of the Newbury section.

Measurements of Be concentrations in separate summer layer - winter layer pairs from individual varves (Figs. 9,10) highlight the grain-size dependence of Be concentrations: finer-grained winter layers have much higher Be concentrations

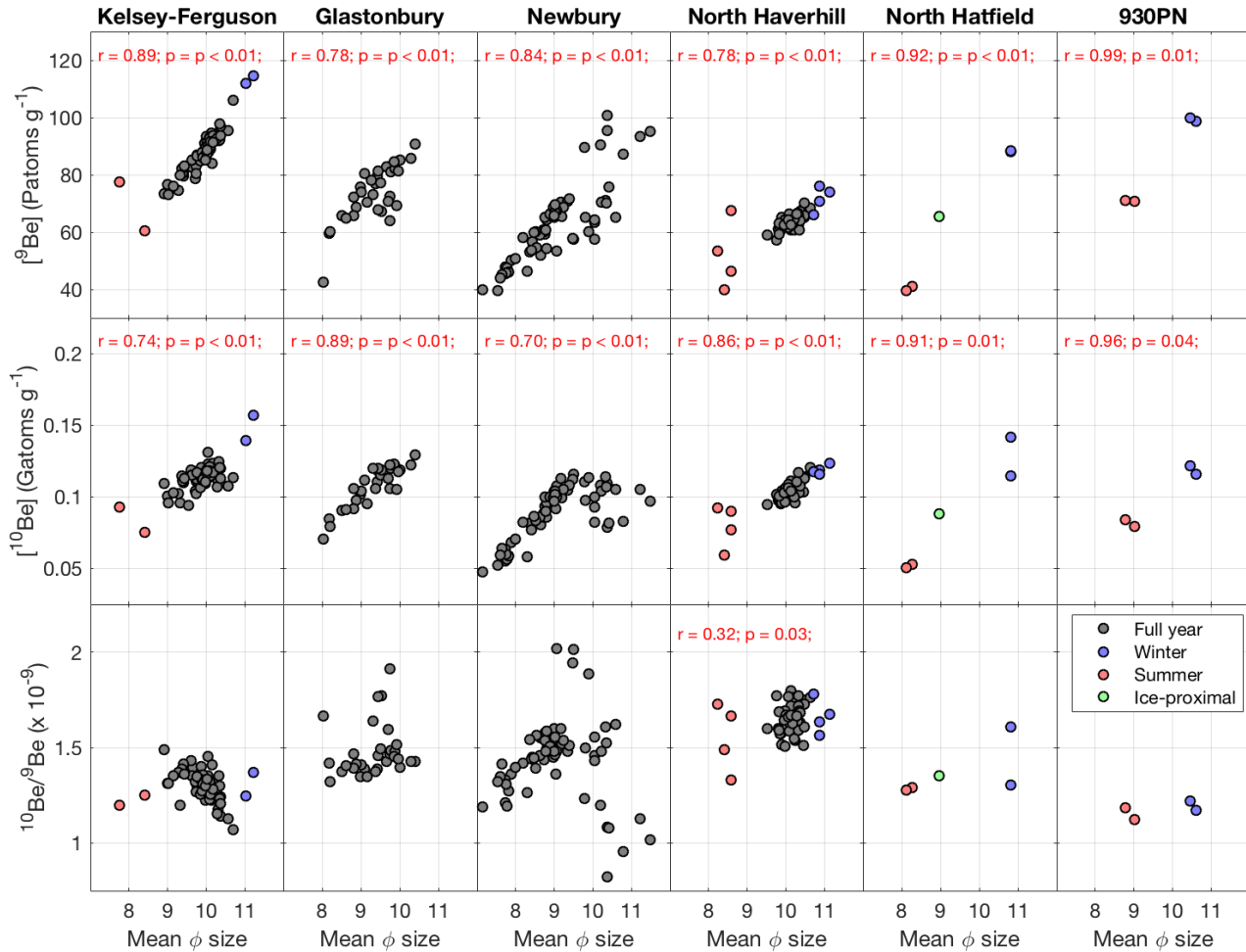


Figure 10. Correlation analysis for grain size and Be isotope concentrations and ratio. The correlation coefficient and p-value are shown in red when data are correlated at 95% or better confidence. ${}^9\text{Be}$ and ${}^{10}\text{Be}$ concentrations are always significantly correlated with mean grain size. However, the ${}^{10}\text{Be}/{}^9\text{Be}$ ratio is not. Note that Φ size is inverse to dimensional grain size, so a positive correlation between Be concentration and Φ is a negative correlation between Be concentration and grain size.

than summer layers, but $^{10}\text{Be}/^9\text{Be}$ ratios are not significantly different. In addition, summer/winter data display the same grain size-concentration relationship as full-year data (Fig. 10). Although the winter and summer samples define the end members of the distribution in grain size-concentration space, seasonal and ~~the~~ full-year data lie on the same trend.

5 Samples of ice-proximal glaciolacustrine sediment and underlying diamict (see Section 2.1.4) have similar Be concentrations and isotope ratios to more ice-distal glaciolacustrine sediment in similar stratigraphic positions (compare the green symbols in Fig. 9 to other data), with one ~~significant~~ exception. The exception is a subglacial till (from the SHD section; green square in Fig. 9). In contrast to all other samples, the properties and stratigraphic position of this sample indicate that it has no glaciolacustrine input and has most likely not interacted with ~~lake~~ subglacial or surface water, and it has much lower ^9Be and ^{10}Be concentrations. Lower Be concentrations are consistent with the relatively large mean
10 grain size (1.1Φ compared to $8-11 \Phi$ for glaciolacustrine samples, although with much poorer sorting). However, the much lower $^{10}\text{Be}/^9\text{Be}$ ratio (1×10^{-10}) in this sample than in glaciolacustrine sediments ($\sim 1-2 \times 10^{-9}$; see Fig. 9) is not necessarily expected, and may indicate that the majority of inherited ^{10}Be in glaciolacustrine sediments is not reflective of recycling of previously exposed sediment but instead may derive from interaction within the subglacial water system between till and ^{10}Be that is present in ice and released by melting.

15 4 Results and discussion II: biennial and decadal data series

4.1 Biennial series

The purpose of sampling two 80-year varve sequences at 2-year resolution is to determine whether or not the 11-year Schwabe solar cycle is present in ^{10}Be flux records. This cycle is evident in ice cores (e.g., Steig et al., 1998) and some lake sediments (e.g., Mann et al., 2012). Recognizing this cycle in the ^{10}Be flux to NAVC sediments would be strong
20 evidence that the NAVC does, in fact, contain a record of global variations in ^{10}Be production and fallout.

4.1.1 Characteristics of biennial series

An 80-year segment of the paraglacial varve sequence at North Haverhill (NHV; Figure 11) has a mean varve thickness of 0.3 cm, corresponding to mass accumulation rates in the range $0.25-0.75 \text{ g cm}^{-2} \text{ yr}^{-1}$. As discussed above, ^{10}Be and ^9Be concentrations are correlated with mean grain size (Figs. 10, 11). Multitaper spectral analysis (Fig. 11; Dettinger
25 et al., 1995; Ghil et al., 2002) does not show significant spectral power in the 11-year band for any of the observed data series except mean grain size, for which a 12-year peak is significant at 90% confidence.

The second 80-year sequence is from glacial varves at the Kelsey-Ferguson (KF) site (Fig. 12) and has a mean varve thickness of 0.85 cm and mass accumulation rates of $0.5-2.5 \text{ g cm}^{-2} \text{ yr}^{-1}$, more than twice that for the paraglacial varves at NHV. Although all the data from KF (shown in Figure 10) display significant correlations between grain size and both
30 ^9Be and ^{10}Be concentrations, in this subset of the data, ^9Be concentrations are significantly correlated with mean grain size ($r = 0.87$; $p < 0.01$) but ^{10}Be concentrations are not ($r = 0.18$; $p = 0.28$). None of the observational data series show significant spectral power in the 11-year band.

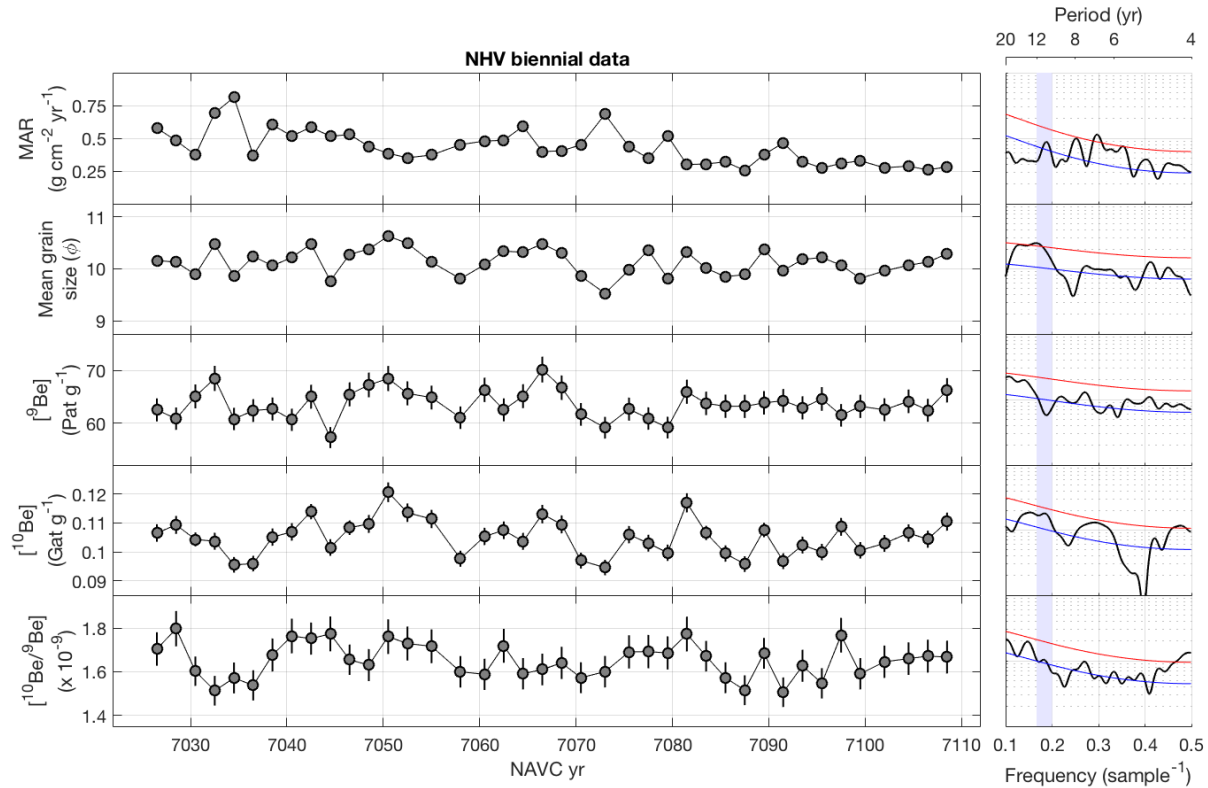


Figure 11. Sedimentological data and Be concentrations for 80-year record with 2-year resolution from paraglacial varves at North Haverhill (NHV) site. Mass accumulation rate (MAR) is calculated from varve thickness and the density-grain size relationship shown in Fig. 3. Plots at right show results of multitaper method (MTM) spectral analysis of the observational data series using the SSA-MTM Toolkit (Dettinger et al., 1995; Ghil et al., 2002), highlighting frequencies in the vicinity of the 11-year Schwabe solar cycle. Blue and red lines show 50% and 90%, respectively, significance thresholds relative to an AR(1) red noise estimate, and the shaded area highlights the 11-year solar cycle band.

4.1.2 [¹⁰Be systematics in biennial series](#)

Be isotope fluxes to the sediment can be derived from the data in Figs. 11 and 12 and are shown in Figs. 13, 14, and 15 for the KF and NHV biennial data. As discussed above, Be flux has units of atoms $\text{cm}^{-2} \text{yr}^{-1}$ and is computed by multiplying Be isotope concentrations (atoms g^{-1}) and mass accumulation rates ($\text{g cm}^{-2} \text{yr}^{-1}$). Following Equation 1, the ^9Be flux is inherited ^9Be adsorbed to sediment entering the lake, whereas the total ^{10}Be flux includes both inherited and fallout components.

We are interested in reconstructing the fallout ^{10}Be flux ($Q_{10,A}f$ in Equation 1), and here we attempt to do this by applying Equation 1 with the following [additional](#) assumptions. First, we assume that the inherited $^{10}\text{Be}/^9\text{Be}$ ratio R_S is constant throughout the time series, which, as discussed above, appears likely over short periods of time. Second, we

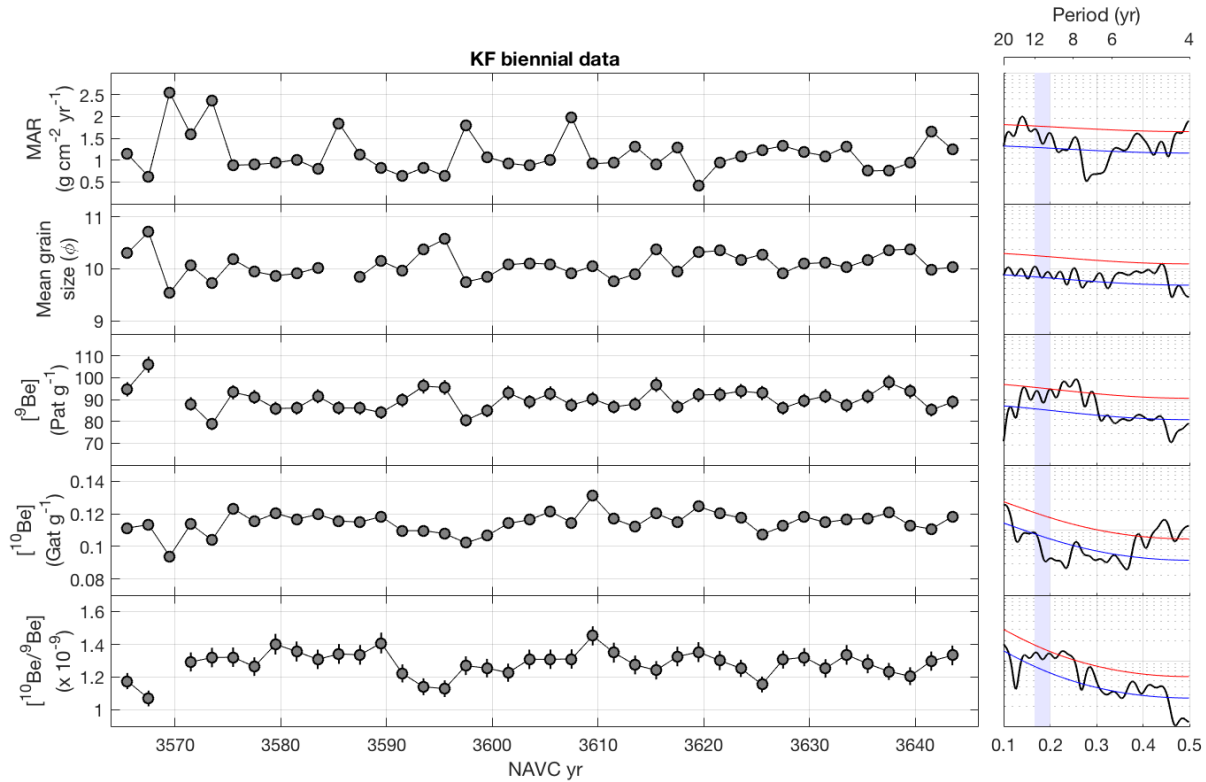


Figure 12. Sedimentological data and Be concentrations for 80-year record with 2-year resolution from glacial varves at Kelsey-Ferguson (KF) site, with MTM spectra. Plot elements are the same as described in Figure 11. For purposes of spectral analysis, missing grain-size and ^{10}Be data for two samples were filled by linear interpolation between adjacent measurements.

assume that the fallout flux $Q_{10,Af}$ is either (i) constant, or (ii) variable with a symmetrical distribution around the mean and also uncorrelated with $Q_{9,T}$. Assumption (ii) is likely true if variable but approximately symmetrically distributed around a mean value. Although atmospheric production and transport processes are nonlinear with respect to solar variability, assuming a symmetric distribution is likely adequate for short-term variability in the fallout flux is periodic, and processes affecting sediment supply that is periodic and has relatively low magnitude. For completeness, we also assume that there is no common forcing of both fallout variations and environmental factors affecting ^9Be delivery to the lake are otherwise unaffected by solar cycle variations. The latter assumption, which is supported by the fact that Rittenour et al. (2000) did not observe 11-year-band spectral power in NAVC varve thickness records, although spectral analysis of grain size variations in the NHV series (Fig. 11) may suggest otherwise.

10 With these assumptions, Equation 1 predicts that linear regression of $(Q_{9,T}, Q_{10,T})$ pairs will yield a line having slope equal to R_S and y-intercept equal to the mean fallout flux. Sample-to sample variation in the fallout flux is expressed as scatter around the line. $Q_{9,T}$ and $Q_{10,T}$ are, in fact, linearly related for both biennial records (Figure 13). Linear regression

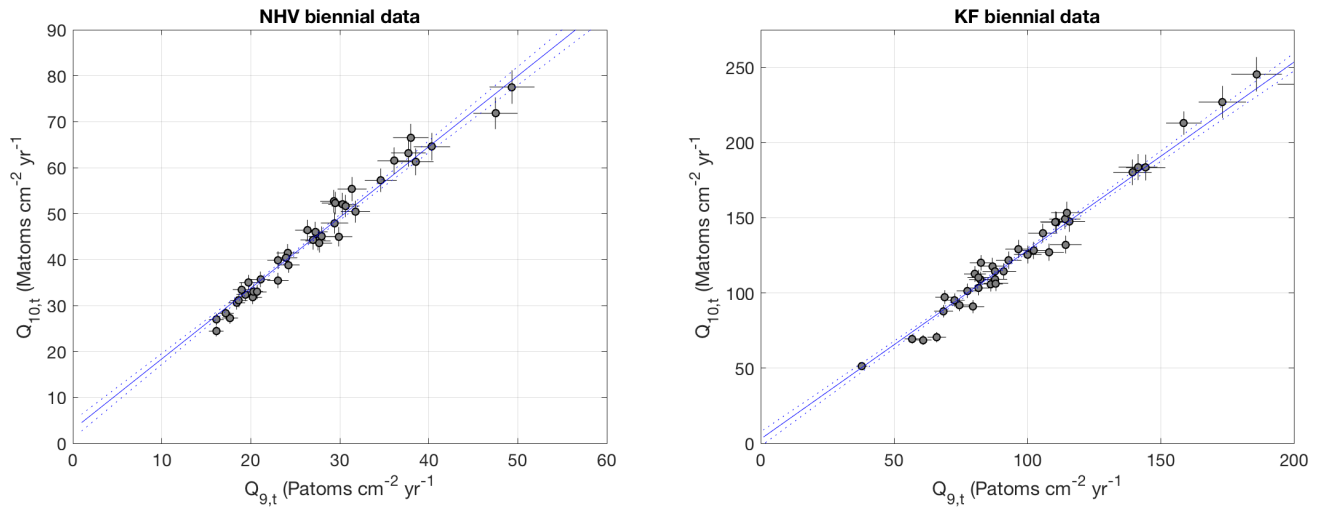


Figure 13. Plots showing regression of ^{10}Be against ^9Be fluxes for NHV and KF biennial data. Following Equation 1, the y-intercept should give the mean ^{10}Be fallout flux. It is evident that, although this is above zero (as it should be), it is small compared to total ^{10}Be fluxes and comparable in magnitude to measurement uncertainty and scatter around the line. The dotted lines show a 68% confidence interval for the regression derived from a Monte Carlo simulation.

for NHV yields $R_S = 1.539 \pm 0.077 \times 10^{-9}$ and $\text{mean}(Q_{10,Af}) = 3.0 \pm 1.9 \times 10^6 \text{ atoms cm}^{-2} \text{ yr}^{-1}$. The regression for KF yields yields $R_S = 1.252 \pm 0.054 \times 10^{-9}$ and $\text{mean}(Q_{10,Af}) = 3.0 \pm 4.9 \times 10^6 \text{ atoms cm}^{-2} \text{ yr}^{-1}$. However, these results imply several complications. First, although intercepts are positive for both data sets, neither are distinguishable from zero at high confidence, and both imply that the fallout ^{10}Be flux is a small fraction ($< 10\%$) of the total ^{10}Be flux at these sites. This is not favorable from the perspective of reconstructing solar-cycle variability in ^{10}Be fallout fluxes, because the expected magnitude of variability in ^{10}Be fallout associated with the 11-year cycle is $\sim 10\text{-}20\%$ (Lal and Peters, 1967; Steig et al., 1998). ~~This would correspond to~~ A 10-20% variation in 10% of the total implies variability in total measured ^{10}Be fluxes no greater than 1-2%, which is smaller than ~~typical our~~ measurement uncertainties of $\sim 33\text{-}4\%$. Second, in agreement with this prediction, Figure 13 shows that measured ^{10}Be fluxes at both sites are indistinguishable from the regression line at the level of measurement uncertainties; ~~in-~~ in other words, from this analysis alone we cannot reject the hypothesis that there is zero variation in the ^{10}Be fallout flux and deviations from the linear relationship are entirely due to measurement errors. Both of these observations indicate that relatively high concentrations of inherited ^{10}Be and relatively low concentrations of fallout ^{10}Be result in a poor signal-to-noise ratio for 11-year period variations in fallout ^{10}Be , and a low likelihood of detecting these variations.

Figures 14 and 15 show estimates of the ^{10}Be fallout flux for the biennial data sets using the estimates of R_S derived from the linear regressions in Figure 13. Note that because the scatter of data around the regression lines ~~is larger than~~ has similar magnitude to the mean fallout ~~flux fluxes~~ fluxes estimated from the y-intercept, this calculation results in some values

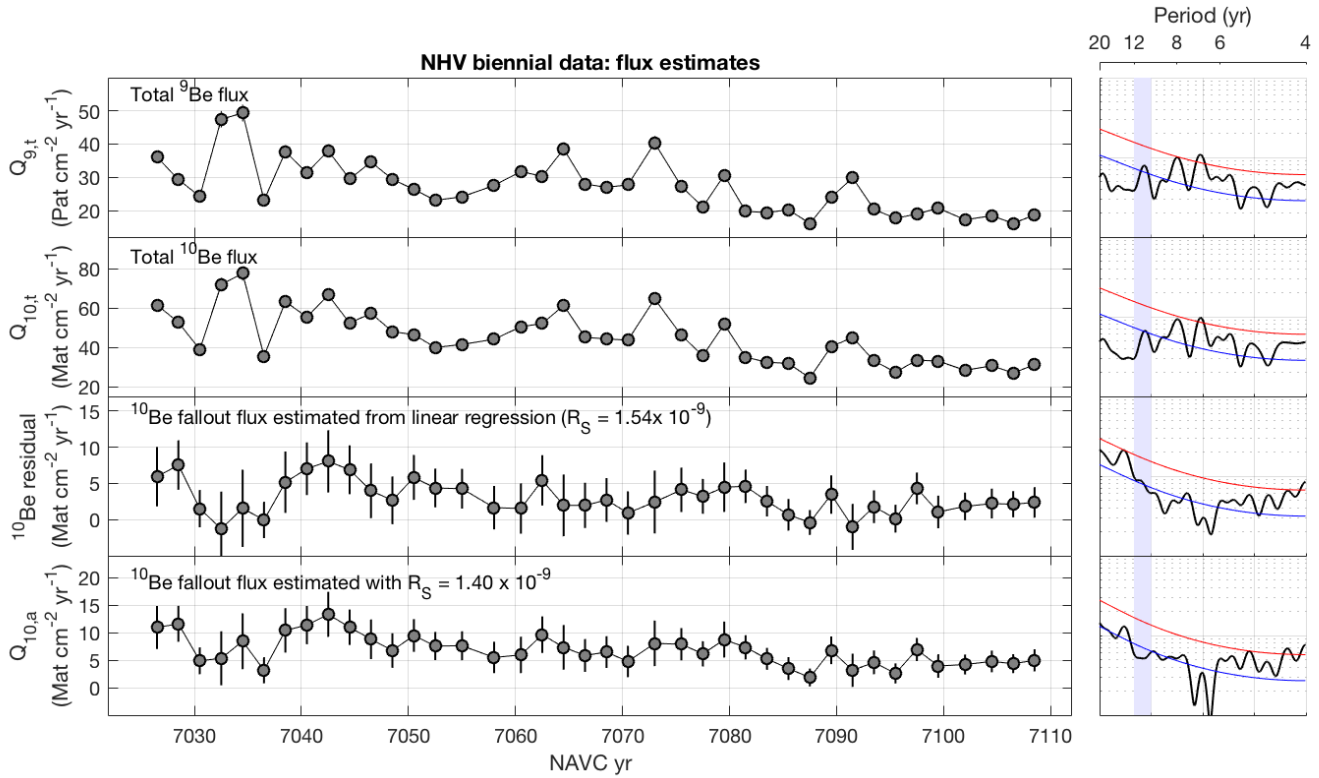


Figure 14. Be flux estimates for 80-year biennial record at NHV. Total fluxes are calculated using the grain size - sediment density relationship shown in Figure 3. ^{10}Be fallout fluxes are estimated from Equation 1 using two different values of R_S : the value inferred from the linear regression in Fig. 13, and a second value chosen to yield higher apparent fallout fluxes and highlight that apparent time variations in the flux are not strongly dependent on the choice of R_S . Error bars reflect propagation of uncertainty on Be isotope concentrations, but not on mass accumulation rates, so may be underestimated. Plot elements for MTM spectra are the same as in Figure 11.

for the fallout flux that are less than or indistinguishable from zero. In addition, this calculation yields fallout fluxes that scatter by $\sim 60\%$ around the mean, which is substantially more than expected for the 11-year solar cycle. These observations suggest that the regression method may be underestimating the ^{10}Be fallout flux. A systematic underestimate might not matter if we are only concerned with whether or not periodic variability exists, but to account for this possibility, we repeated the calculation with values for R_S that are lower than inferred from the regressions in Figure 13 and chosen to yield mean fallout flux estimates that all exceed zero (Figs. 14, 15). Although there is no strong basis for choosing these values, they yield estimates of the ^{10}Be fallout flux that have less relative variability, and highlight the property of Equation 1 that although the choice of R_S affects the mean estimated ^{10}Be fallout flux and therefore the relative magnitude of the variability around the mean, it has minimal effect on its pattern of variability. This, in turn, is important because it implies that an inaccurate estimate of R_S is most likely not an obstacle to spectral analysis of short-term variability or correlation

with ice core records. On the other hand, the relative magnitude of variability in the reconstructed fallout fluxes is strongly dependent on the assumed value of R_S . As our estimate of R_S depends on several assumptions and may be unreliable, the magnitude of reconstructed fallout variability is also likely unreliable. This, in turn is potentially important in evaluating whether or not reconstructed ^{10}Be fallout variations from NAVC sediments are consistent with independent records or with physical limits on the possible variability in atmospheric ^{10}Be production and fallout, and we discuss it in more detail later in section 4.2. From the perspective of the biennial records at NHV and KF, however, this issue is not likely to be relevant, because, as highlighted in Figures 14 and 15 also highlight that, propagated measurement uncertainties in the estimates of the ^{10}Be fallout flux, especially for the paraglacial NHV data, have the same scale as the short-term variability in the estimates, which may indicate. This supports the argument that the unexpectedly large magnitude of short-term variation in the ^{10}Be fallout flux is not the result of underestimating incorrectly estimating R_S , but rather reflects measurement uncertainty indicates that variability in the true fallout flux is smaller than measurement uncertainty in the reconstructed fallout flux and that the majority of apparent variability derives from measurement errors.

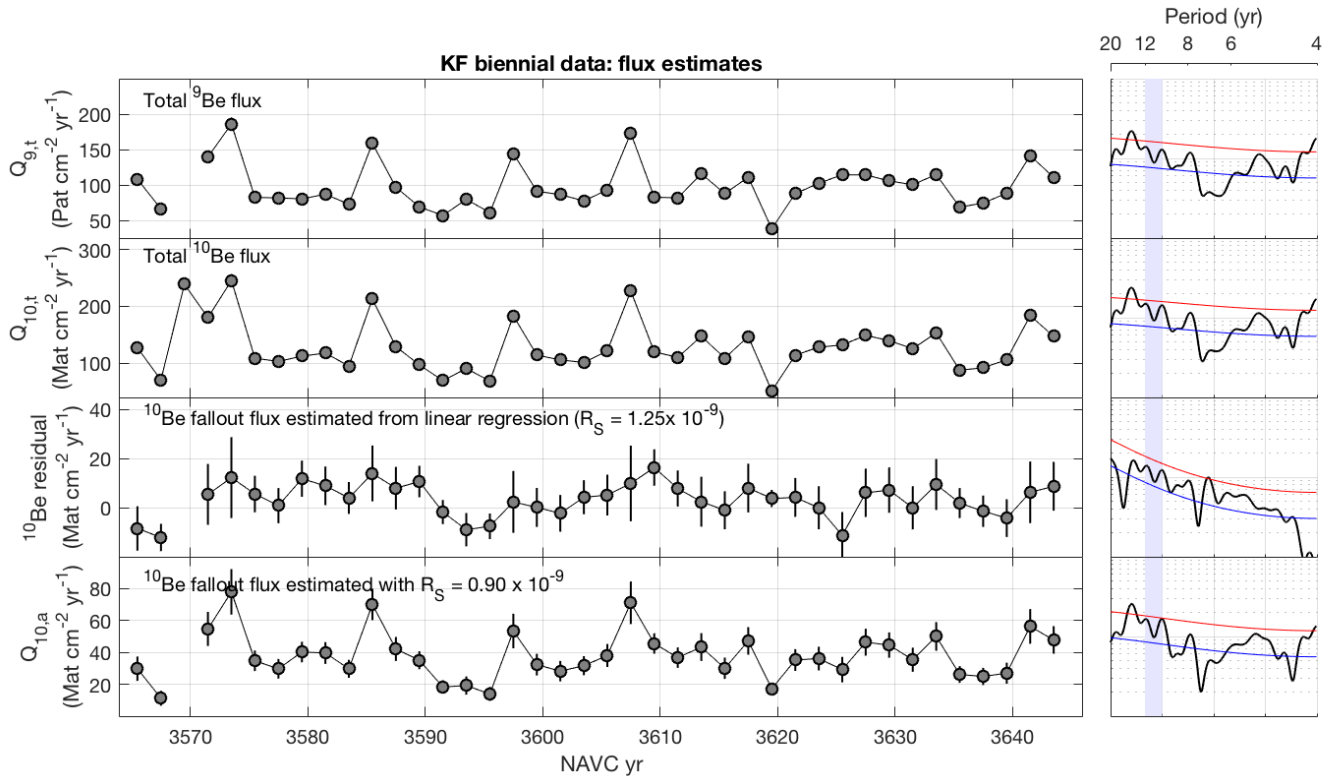


Figure 15. Be flux estimates for 80-year biennial record at KF. Total fluxes are calculated using the grain size - sediment density relationship shown in Figure 3. Fallout fluxes are estimated from two different assumed values of R_S ; see text for details. Error bars reflect propagation of uncertainty on Be isotope concentrations, but not on mass accumulation rates. Plot elements for MTM spectra are the same as in Figure 11.

Spectral analysis of ~~total reconstructed~~ ¹⁰Be ~~fallout~~ fluxes for both biennial records does not display significant spectral power in the 11-year band (Figs. 14, 15). ~~¹⁰Be fallout flux estimates display spectral peaks near this band in both records, but~~ However, results of spectral analysis highlight that the choice of R_S has limited importance for spectral analysis of the records; although the significance level of ~~these peaks varies with the value of~~ individual peaks varies somewhat with R_S used to compute the fallout fluxes. That is, power spectra are similar for different values. For example, R_S derived from the regression analysis at NHV (Fig. 14) yields a 14-year peak that is significant at 90% confidence; a lower value of R_S yields the same peak, but at lower significance. At KF (Fig. 15), on the other hand, a lower value of R_S slightly increases the significance level of peaks in the 10-14 year band. Overall, ~~spectral analysis of these records does not provide strong evidence for significant variability in ¹⁰Be fallout on the 11-year Schwabe cycle band.~~

10 4.1.3 Summary, biennial series

We conclude from the 80-year biennial records that ~~because of the relative magnitudes of inherited and fallout ¹⁰Be fluxes at these sites, the~~ the 11-year solar cycle can neither be confidently identified or excluded in these data. At these sites ~~In these records,~~ the inherited ¹⁰Be flux represents the majority of the total ¹⁰Be flux and is much higher than the ¹⁰Be fallout flux. Expected variability in ¹⁰Be concentrations associated with 11-year band solar variability is small in relation to measurement uncertainties, which in turn makes it difficult to recognize such variability in ¹⁰Be fallout flux estimates derived from our measurements. ~~Spectral analysis did not display significant power in the 11-year band in fallout estimates, but if, as implied by the linear regressions discussed above, true variability in ¹⁰Be fallout is smaller than measurement errors in reconstructed ¹⁰Be fallout, we would not expect to detect it even if it was present.~~ Therefore, our strategy of using the 11-year solar cycle to test the hypothesis that ¹⁰Be fallout variability is recorded in NAVC sediment did not yield a significant result: we have not proven conclusively that 11-year variability is present, but we also showed that, because of the poor signal-to-noise ratio induced by relatively high concentrations of inherited ¹⁰Be, we cannot prove that it is absent.

4.2 Decadal series

We now describe results from sampling two \sim 1000-year varve sequences at decadal resolution. The purpose of these sample sets is to determine whether or not centennial-scale variability in ¹⁰Be fallout fluxes evident in ice core records can be identified in NAVC sediments and, if identified, matched to ice core ¹⁰Be records. During ~~some of the~~ the time periods represented by these sequences, ~~in particular near 14,000 years ago,~~ ice core ¹⁰Be records show ~~centennial centennial-period~~ variations in ¹⁰Be ~~fluxes of up to a factor of two~~ deposition with relative magnitude exceeding 50%, substantially greater than expected from the 11-year solar cycle. Thus, it is more likely that these longer-period, ~~larger-amplitude~~ variations could be distinguished from measurement noise in NAVC sediments.

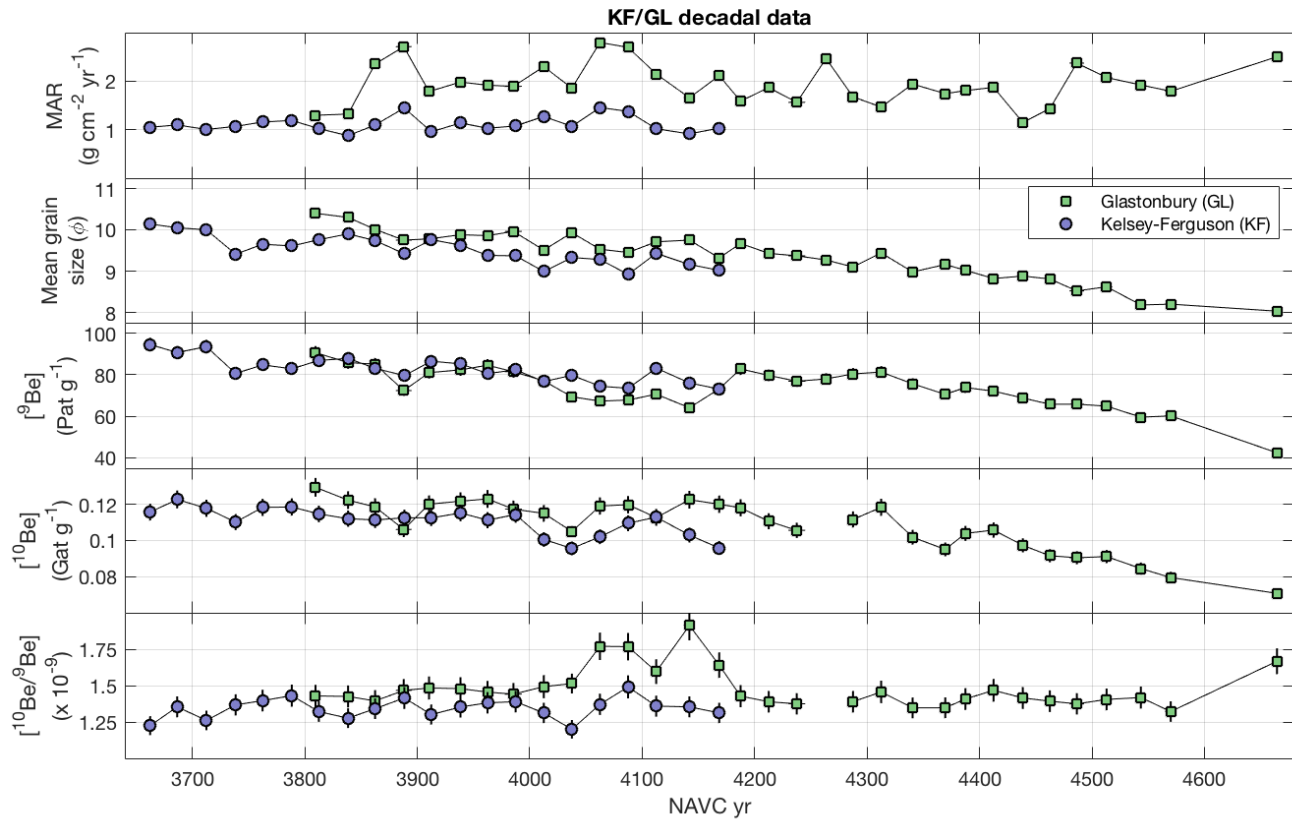


Figure 16. Sedimentological data and Be concentrations for decadal-resolution records from adjacent, overlapping sequences of glacial varves at Glastonbury (GL) and Kelsey-Ferguson (KF).

4.2.1 Decadal series of glacial varves from Glastonbury and Kelsey-Ferguson sites

Overlapping sequences of glacial varves from the Glastonbury (GL) and Kelsey-Ferguson (KF) sites in north-central Connecticut (Figures 1, 2; Table 1; Figure 16) span NAVC years 3658-4675, approximately corresponding to 17,200-16,200 years BP. This set of samples has 20-30 year spacing, each individual sample includes 10-15 contiguous varves, and samples collected in the range of overlap of the two sections sample nearly exactly the same varves, although some pairs of samples are offset by 1-2 years. KF is 8 km north of GL and therefore more ice-proximal, but varves at KF are also slightly thinner because the site is shallower and therefore subject to a lower sedimentation rate. The interval sampled was deposited while the glacier was at least 30 km to the north of KF. The mean grain size of matching samples from the same set of varves is coarser at KF, which is consistent with the site being shallower and more ice-proximal (Figure 16). ⁹Be concentrations are not significantly different between paired samples, but ¹⁰Be concentrations are systematically slightly higher at GL, resulting in ¹⁰Be/⁹Be ratios that are systematically higher at GL than KF in the period of overlap

between the two sample sets. ~~Although most of the observed variability in the $^{10}\text{Be}/^9\text{Be}$ ratio in both records is similar in magnitude to measurement uncertainties, both sites show a perturbation in $^{10}\text{Be}/^9\text{Be}$ ratio that exceeds measurement uncertainty at NAVC 4000-4100.~~

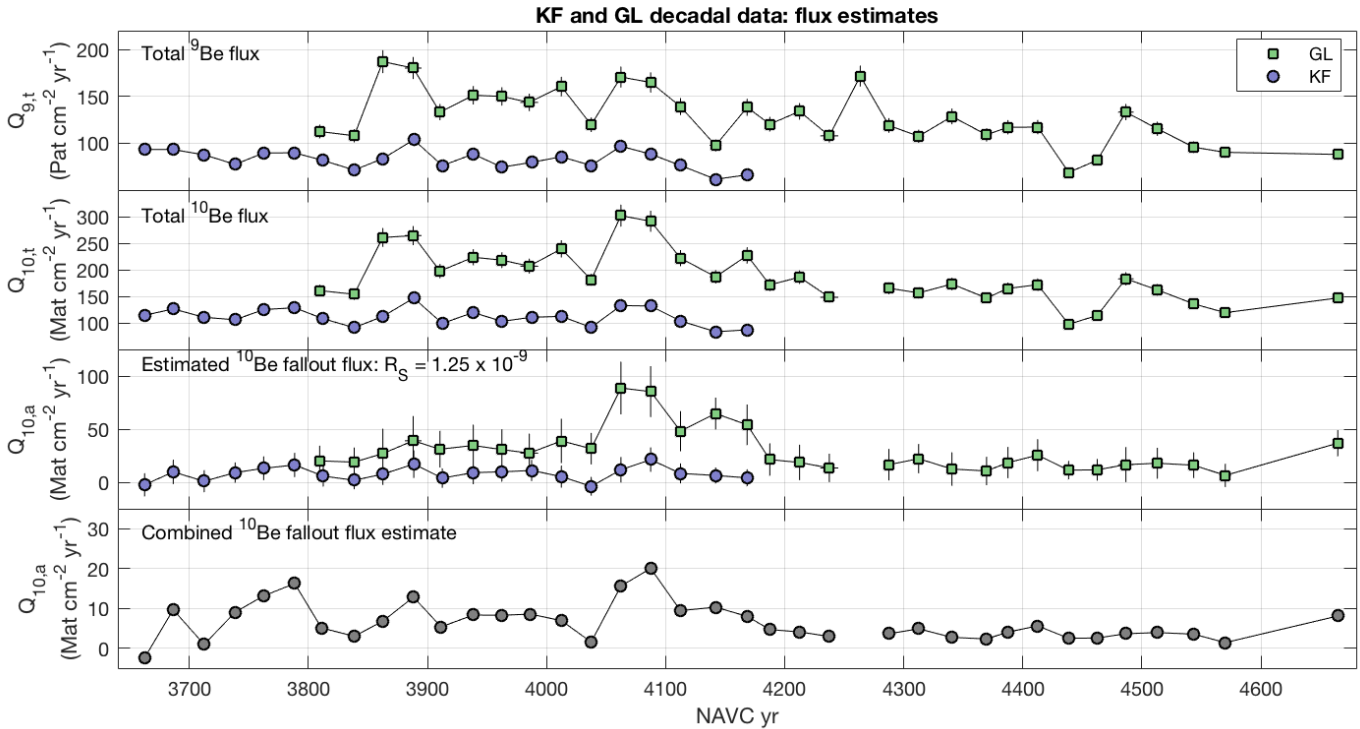


Figure 17. Be fluxes calculated for KF and GL decadal records. Upper panels, total ^9Be and ^{10}Be fluxes to sediment. Third panel, ^{10}Be fallout flux estimates using Equation 1 for constant R_S . Lower panel, combined estimate computed by linearly scaling estimate from KF to force agreement in the period of overlap of the two records.

Figure 17 shows estimates of ^{10}Be fallout flux for these sites. ~~To calculate~~ When we calculated ^{10}Be fallout flux for the
 5 80-year records ~~discussed~~ in the previous section, we estimated R_S from linear regression of ^9Be and ^{10}Be fluxes by assuming ~~assumed~~ that R_S is constant and that was constant and variations in the ^{10}Be fallout flux are uniformly were
symmetrically distributed around some mean as well as independent of variations in the total Be flux, which enabled us
to estimate R_S from linear regression of ^9Be and ^{10}Be fluxes. However, for a 1000-year record, these assumptions are
 not likely to be true. In particular, changes in R_S , $Q_{9,T}$, and f are likely to occur on time scales of hundreds of years, as
 10 the ice margin recedes from a site and the sediment grain size, the size of the contributing watershed, and the balance
 of glacial and paraglacial sediment all change. In fact, regression of ^9Be and ^{10}Be fluxes for the long records at both KF

and GL yield unphysical negative intercepts, which is consistent with the prediction hypothesis that R_S is not constant throughout this record.

Thus, lacking any other constraints on R_S , we estimated ^{10}Be fallout fluxes using the value of R_S that we inferred from linear regression of ^9Be and ^{10}Be fluxes for the biennial data at KF (Fig. 17; also see section 4.1 and Fig. as discussed above in section 4.1 (Figs. 17 and 13)). The resulting estimates (Fig. 17) show have different relative magnitudes, but similar short-term variability, although different magnitudes: for the with common excursions around NAVC 3850-3900 and 4000-4100. The fact that reconstructed ^{10}Be fallout variations are similar at both sites could be evidence that we are, in fact, correctly reconstructing true fallout variations. On the other hand, reconstructed fallout fluxes at these sites are weakly correlated with total fluxes, which may indicate that our procedure has not entirely separated environmental and fallout effects on ^{10}Be fluxes. With this value of R_S , during the period of overlap of the two records during in which flux estimates are relatively constant show limited variability between NAVC 3850-4000, the mean estimated fallout flux at GL is near 1×10^7 atoms $\text{cm}^{-2} \text{yr}^{-1}$, whereas at KF it is near 3.5×10^7 atoms $\text{cm}^{-2} \text{yr}^{-1}$. Given an approximate average fallout flux for temperate mid-latitudes of 1.5×10^6 atoms $\text{cm}^{-2} \text{yr}^{-1}$ (Graly et al., 2011, and references therein), these imply $f \simeq 6$ for GL and $f \simeq 20$ for KF, which are within the range observed for lakes elsewhere. This difference is simply a consequence of the fact that However, as we discussed in section 4.1 with respect to the biennial data, the estimate of R_S used to estimate ^{10}Be fallout fluxes affects the mean value and the relative magnitude of reconstructed fallout variations and also the degree of correlation between total Be fluxes and reconstructed ^{10}Be concentrations are systematically higher at GL. It fallout fluxes, although not the pattern of variability. Thus, although our reconstructed fallout fluxes at these sites imply physically reasonable values for f , it is difficult to prove conclusively from the data themselves that they reflect true fallout variations to the lake system. A systematic difference between fallout fluxes at the two sites could be an artifact of the calculation if R_S is not, in fact, the same at both sites, although the fact that the sediment at both sites was sourced from the same ice margin makes this unlikely. Alternatively, it could represent a real difference in the delivery rate of fallout ^{10}Be to the sediment. For example, as GL is farther from the ice margin, the sediment deposited there could have a longer residence time in the lake, which may allow for more complete scavenging of fallout ^{10}Be . If this hypothesis is correct, it could imply that (i) the ^{10}Be fallout flux to the sediment $Q_{10,A}f$ may be quite variable throughout the lake at any given time, and also (ii) variations in sediment transport within the lake could cause variations in the fallout flux at a given site that were unrelated to the actual atmospheric fallout rate. On the other hand, the similarity in fallout flux estimates between the two sites, including reproducibility of perturbations near NAVC 3880 and 4050-4100, is evidence that To summarize, our estimates of ^{10}Be fallout fluxes at these sites appear physically reasonable and show reproducible variability in excess of measurement uncertainty, but it is difficult to prove conclusively from the measurements alone that they represent true variations in atmospheric fallout are likely being recorded ^{10}Be fallout to the lake system.

For purposes of We explored this further by comparing ^{10}Be fallout flux estimates with variations in global fallout observed in ice cores at these sites to coeval ice core records. For purposes of comparison, we assume that the difference between the two records is most likely explained by differences in f between the two sites, and therefore obtain an estimate of centennial-scale variability represented in both records by applying a constant scaling factor to the GL data

so as to align the two records where they overlap between NAVC 3810-4040, then averaging the two records within the period of overlap. This procedure loses information on the relative magnitude of fallout variability, and our combined estimate has higher internal variability (~50%; see lowest panel of Figure 17) than is observed in ice core ¹⁰Be flux records for this time period (~15%). However, we argued above in section 4.1 that the relative magnitude of our fallout flux estimates is likely unreliable due to its dependence on R_S , so could not be used as a point of comparison with ice core records in any case. Multitaper spectral analysis of this combined record shows a significant (at 95% confidence) spectral peak at 91 years, which matches a characteristic period observed in solar variability records (the 88-yr 'Gleissberg cycle,' e.g., Feynman and Fougere, 1984). This, like the similarity of fallout flux estimates from the two records, suggest that variability in our fallout flux estimate is not solely the result of measurement noise, and that true centennial-scale variability in ¹⁰Be fallout may be recorded. ~~Our combined estimate has higher internal variability (~50%; see lowest panel of Figure 17) than is observed in ice core ¹⁰Be flux records for this time period (~15%). This could be an artifact of the flux estimate and scaling procedure, but it could also reflect focusing effects within the lake.~~

Figure 18 compares our combined ¹⁰Be fallout flux record to ice core ¹⁰Be fallout flux records compiled by Adolphi et al. (2018). Again, as we have argued that the magnitude of variability in our ¹⁰Be fallout flux estimate is unreliable, we compare scaled and centered records to focus on the pattern of variability rather than the magnitude. The overall structure of the ice core records in this time period displays periodic centennial-band variability as well as a broader low between ~16500-16800 GICC05 yr BP. ~~The ice core records are shown in years BP (that is, before 1950) on the GICC05 timescale.~~ If we start with the NAVC-calendar year BP offset of 20820 yr inferred from ¹⁴C data (Ridge et al., 2012; Thompson et al., 2017) and accept the estimate of Adolphi et al. (2018) that the GICC05 chronology is 175 yr too young in this time interval, then we expect a NAVC-GICC05 yr BP offset of (20820-175 = 20645). Aligning the composite ¹⁰Be fallout estimate from KF and GL with the ice core ¹⁰Be stack (Figure 18, panel B) with a NAVC-GICC05 yr BP offset of either 20820 or 20645 does not yield a good match: a peak in ¹⁰Be fallout flux near NAVC 4100 aligns with a period of relatively low flux in the ice core stack, resulting in an inverse correlation between the two records. Ridge et al. (2012), based on ~~event~~ correlation between NAVC varve thickness records and Greenland ice core temperatures, suggested NAVC-GICC05 yr BP offsets of 20825 for events near 16100 yr BP and 20750 for events near 17400 yr BP, and neither of these yields a good match either.

We searched for a better match by looking for the closest alternative value of the offset for which the KF/GL combined fallout estimate is positively correlated with the ice core stack at high confidence (Fig. 18, panels C and D). This occurs for NAVC-GICC05 yr BP offsets in the range 20965-21165 yr, with the best correlation at 21110 years. This aligns ~~the~~ fallout peak at NAVC 4100 a series of fallout peaks at NAVC 3700-4100 in the KF/GL record with a broad peak at high around 17,000-000-17,300 GICC05 yr BP in the ice core records, and a period of low variability at NAVC 4200-4600 with a broad low around 16,500-16,800 GICC yr BP. However, ~~significant correlations occur over a fairly wide range of offsets, and in addition the results of this correlation are quite dependent on which ice core record is used. For example, a NAVC-GICC05 offset is better correlated with the GRIP ¹⁰Be record than the stack due to a prominent peak in the GRIP record at 16750 GICC05 yr BP that is not well expressed in the stack~~ the correlation is significant across a 200-yr range

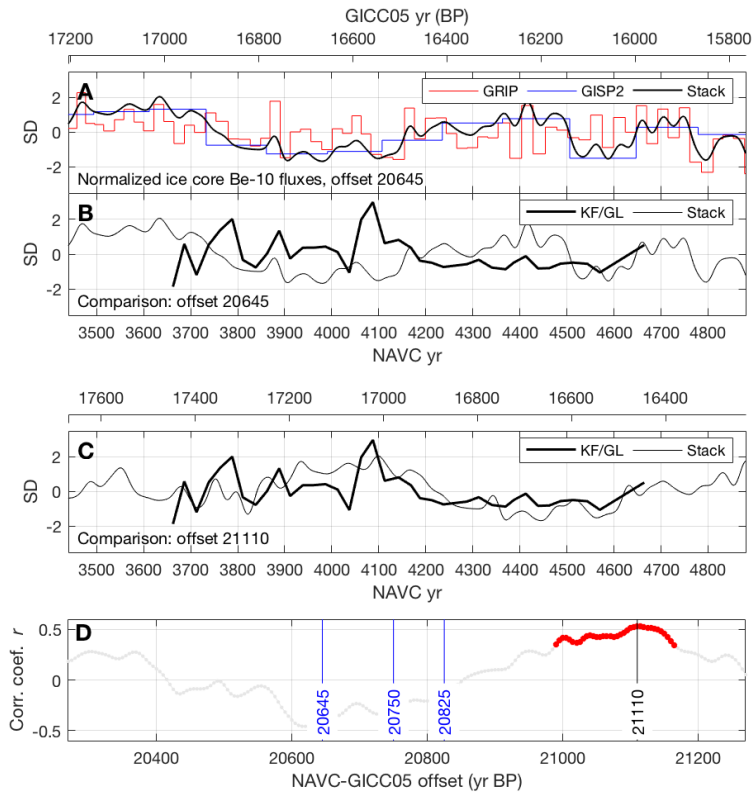


Figure 18. Comparison of the combined ^{10}Be fallout flux estimate from the KF/GL sites (Fig. 16) with ice core records of ^{10}Be fallout. **A**, scaled and centered ice core ^{10}Be flux records from (Adolphi et al., 2018, and references therein), offset to NAVC years with a NAVC-GICC05 yr BP offset of 20645 yr (see text). "Stack" is the global ice core stack from Adolphi et al. (2018). **B**, scaled and centered combined KF/GL fallout flux estimate compared to the ice core stack with the same 20645 yr offset. **C**, same as B, only for an offset of 21110 yr. **D**, results of correlation analysis comparing the scaled and centered KF/GL fallout flux estimate with the ice core stack. Red highlights values of the offset where the hypothesis that the two records are positively-correlated-uncorrelated can be rejected at 95% confidence. Vertical lines highlight offsets inferred from radiocarbon dating of NAVC varves (20820, or 20645 with the GICC05 - calendar year offset of Adolphi et al., 2018 for this time period) and event correlation of varve thickness with Greenland ice core temperature (20825 and 20750; Ridge et al., 2012). All of these yield an inverse correlation between the ^{10}Be records.

in the offset, which shows that the correlation analysis is mainly aligning the longer-period structure of the two records rather than the centennial-scale variability. Apparent correlation of ~1000-year period variations in a record that is only 1000 years long could easily be misleading if the assumption of constant R_S and f created a spurious systematic drift.

Overall, our ^{10}Be fallout flux estimate from the KF/GL decadal series (i) shows variations that are reproducible between
5 two sites, (ii) shows evidence for periodic variability in a band characteristic of solar variability, and (iii) ~~can be matched~~
shows acceptable correlation with the global ice core ^{10}Be fallout stack using an NAVC-GICC05 offset that is close to the
expected value. These observations may suggest that our fallout flux estimate is, in fact, recording global atmospheric
 ^{10}Be production and fallout variations. On the other hand, the apparent correlation between the two records mostly
reflects alignment of long-period variability, ~~specifically (i) the difference between higher average flux before NAVC 4150~~
10 ~~and lower after and (ii) millennial-scale variability in the ice core stack, in this case a broad high near 16200 GICC05~~
~~yr BP and a broad low near 16700. Apparent correlation of ~1000-year period variations in a record that is only 1000~~
~~years long could easily be spurious if the assumption of~~ which is unlikely to be robust for a relatively short record and in
addition could arise from incorrectly assuming constant R_S ~~or the scaling and centering procedure created a spurious~~
~~systematic drift and f .~~ Thus, although this match between NAVC and ice core fallout records is possible ~~, it is not highly~~
15 ~~convincing~~ and is consistent with the hypothesis that our fallout flux estimate represents true variability in ^{10}Be fallout, it
does not provide strong support for the hypothesis.

4.2.2 Decadal series of glacial and paraglacial varves from Newbury

Our decadal-resolution record from Newbury comprises a sequence of glacial varves transitioning to paraglacial varves
between NAVC 6630-8190 (Figure 19). This set of samples has 20-30 year spacing, and each individual sample includes
20 10-20 contiguous varves. Ridge et al. (2012) placed the boundary between glacial and paraglacial varves at NAVC
7100, where relatively thick varves with relatively high interannual variability (high MAR) are overlain by thinner varves
(lower MAR) with reduced interannual variability (Fig. 19). However, grain size and Be concentration records (Fig. 19)
do not show the same sharp transition, indicating that the glacial-paraglacial transition was more likely characterized by
a gradual reduction in glacial meltwater and sediment delivery beginning near NAVC 7100 and continuing for ca. 200
25 years. Regardless, sediments in the lower part of this section before ca. NAVC 7000 are predominantly derived from
direct glacial discharge, and sediments in the upper part after ca. NAVC 7225 are predominantly derived from runoff
from the deglaciated landscape. A period of low MAR beginning at NAVC 6800 is associated with the Littleton-Bethlehem
Readvance, a period of ice margin expansion into the lake recognized from a moraine complex and related stratigraphic
sections ~40 km to the north of this site (Ridge and Toll, 1999; Ridge et al., 2012; Thompson et al., 2017). Although the
30 distance to the ice margin presumably decreased at this time, this effect was offset by reduced meltwater production in a
cooler climate that resulted in thinner, finer-grained varves.

Be isotope systematics are very different in glacial and paraglacial parts of the Newbury section (Figures 20, 21).
Although, as noted above, the assumptions necessary to estimate R_S from linear regression of ^9Be and ^{10}Be total
fluxes are probably not valid for long records, regressions for glacial and paraglacial parts of the section in Figure 20

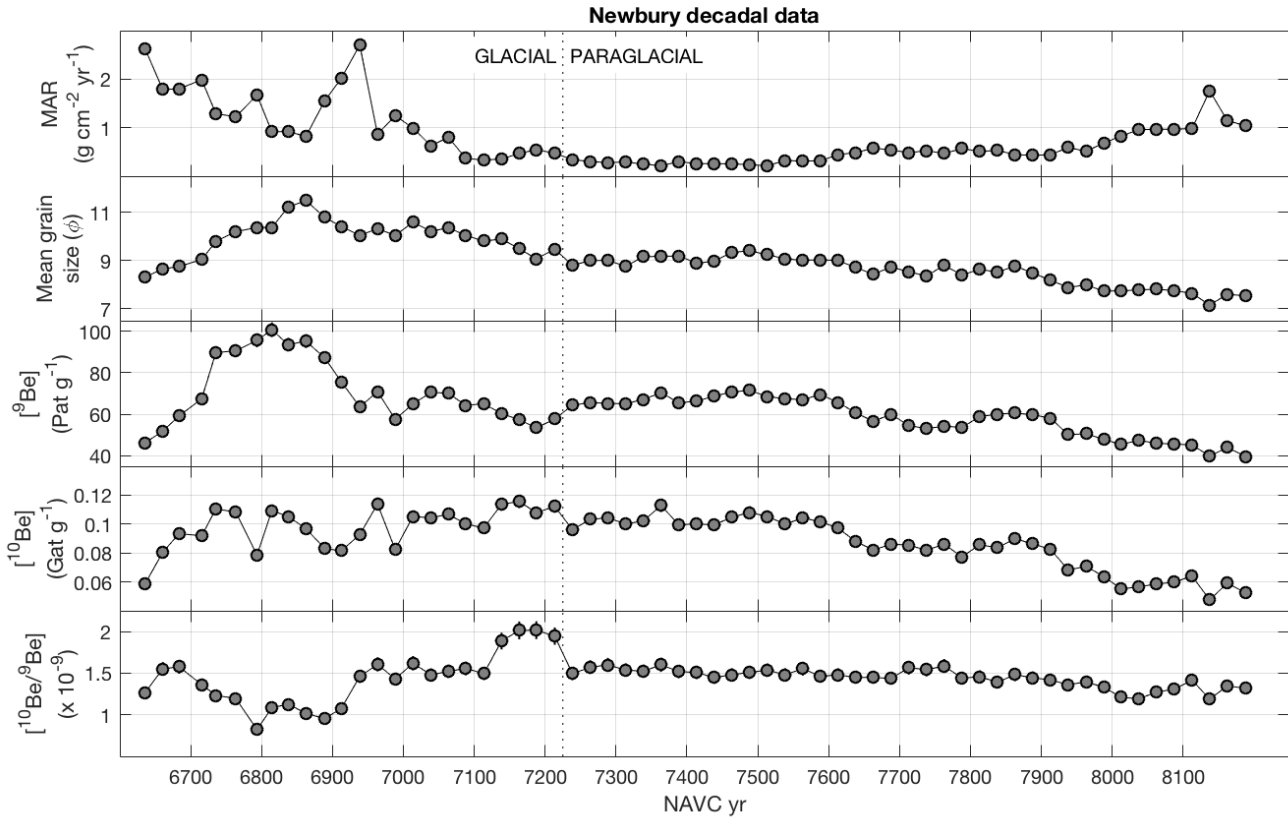


Figure 19. Sedimentological data and Be concentrations for decadal-resolution record at Newbury (NEWB; see Figs. 1 and 2).

differ in a way that is similar to that observed for the paraglacial and glacial biennial records at NHV and KF, and are consistent with expected changes from a glacial to paraglacial environment. Glacial varves imply $R_S = 1.03 \times 10^{-9}$ and $\text{mean}(Q_{10,A}f) = 2.3 \times 10^7 \text{ atoms cm}^{-2} \text{ yr}^{-1}$ (e.g. $f \simeq 15$), and ^{10}Be fluxes display high variability around the regression line, which implies that fallout ^{10}Be represents a significant fraction of the total ^{10}Be flux. Paraglacial varves imply $R_S = 1.2 \times 10^9$ and $\text{mean}(Q_{10,A}f) = 8.4 \times 10^6 \text{ atoms cm}^{-2} \text{ yr}^{-1}$ (e.g., $f \simeq 5$), with minimal variability. This is consistent with our hypothesis, discussed above, that R_S is expected to be higher for a deglaciated landscape, that may have been accumulating ^{10}Be in soils for thousands of years, than for direct glacial sediment discharge. The decrease in f between glacial and paraglacial varves at the same site is also consistent with the prediction that f should be larger if the lake watershed includes a significant area of the adjacent ice sheet, so the glacial-paraglacial transition is associated with a significant decrease in contributing area.

Although this analysis highlights differences in ^{10}Be systematics between glacial and paraglacial varves, application of the estimates of R_S from the regression slopes to Equation 1 would imply unphysical negative ^{10}Be fallout fluxes for

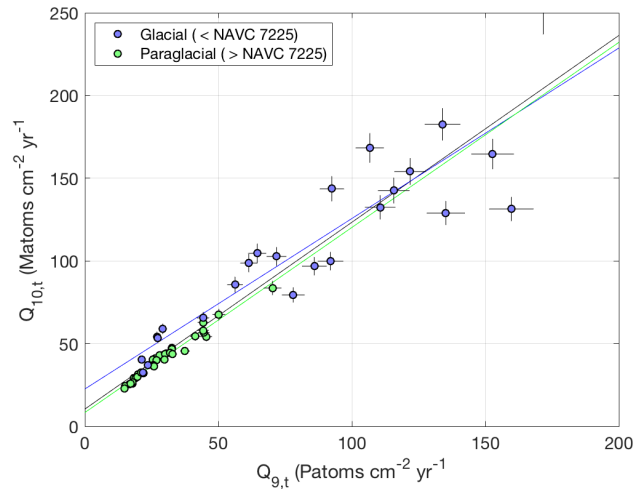


Figure 20. Regression of ^9Be and ^{10}Be total fluxes for glacial and paraglacial varves at Newbury.

several samples. Thus, the estimate of ^{10}Be fallout flux in Figure 21 uses $R_S = 0.9 \times 10^{-9}$. Again, the assumed-value value we assume for R_S affects the mean of calculated fallout fluxes and therefore the relative magnitude of the variability, but does not affect reconstructed short-term variability in the flux as long as R_S is assumed to be slowly varying the pattern of fallout variability.

5 The most striking aspect of ^{10}Be fallout flux estimates for Newbury is that variability in ^{10}Be fallout flux is strongly suppressed in the paraglacial section. This is a likely consequence of buffering of ^{10}Be fallout by watershed processes in the absence of direct glacial meltwater input. As ^{10}Be is known to accumulate in soils in nearly all environments (Pavich et al., 1984), in a paraglacial landscape, a substantial fraction of ^{10}Be fallout deposited in the watershed is likely adsorbed to developing soils during infiltration and therefore cannot be transported into the lake. Pollen records from this
 10 time period show that the landscape was heavily vegetated (Thompson et al., 2017), which highlights the likelihood of rapid soil development and ^{10}Be accumulation in soils in the watershed. On the other hand, ^{10}Be deposited on the surface of an ice sheet with negative mass balance, as presumably was the case for a large extent of the southern margin of the rapidly retreating Laurentide Ice Sheet at this time, cannot accumulate. Fallout ^{10}Be deposited on an ablation area of the ice sheet that drains into a glacial lake must all be flushed into the lake, either by supraglacial or subglacial drainage,
 15 during the summer melt season each year. Thus, if a large area of the ice sheet drains into the lake, fallout ^{10}Be from a large area can be effectively concentrated and transported to the lake with a minimal time lag between fallout and delivery. We conclude from the striking contrast between glacial and paraglacial ^{10}Be systematics at this site that glacial lake sediments very-likely record ^{10}Be fallout variations with a significantly higher amplitude and shorter time lag than paraglacial sediments. Fallout variations in paraglacial lake sediments appear to be strongly suppressed by watershed
 20 buffering of ^{10}Be fluxes.

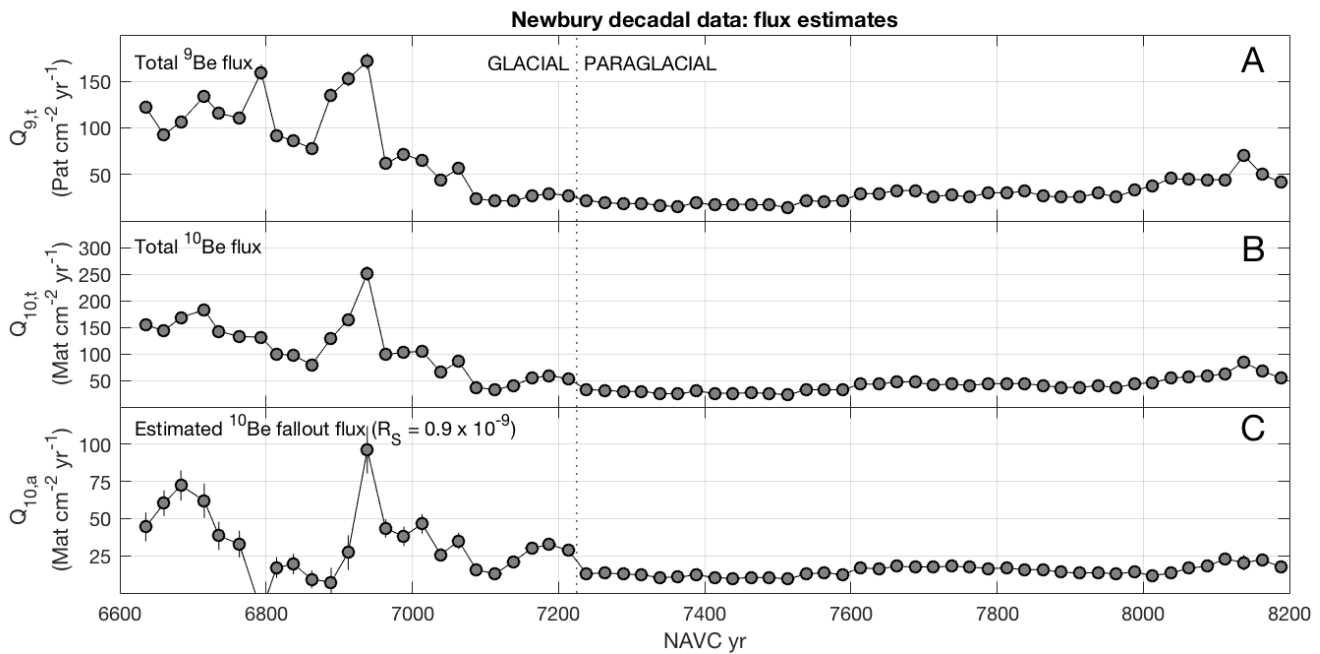


Figure 21. Be fluxes calculated for Newbury decadal record. **A** and **B**, total ^9Be and ^{10}Be fluxes to sediment. **C**, ^{10}Be fallout flux estimate using Equation 1 for constant R_S .

~~Figure~~ ~~The reconstructed fallout flux in the glacial section at Newbury displays high variability with several peaks that are substantially larger than measurement uncertainty, and does not show any correlation with total Be flux, so this variability is not likely to be explained by environmental factors.~~ ^{10}Be fallout records from ice cores that are coeval with the Newbury glacial section also display high variability at centennial time scales during this period, and figure 22 compares the ^{10}Be fallout flux estimate from Newbury to ice core ^{10}Be flux records. ~~Because the ice core records.~~ Note that because the variability in ^{10}Be fallout flux in the paraglacial section of the record is minimal and near the level of measurement uncertainty, this portion of the record has no effect on a correlation analysis and we do not consider it. ~~However, the glacial portion of the record prior to NAVC 7200 has significant centennial-scale variability.~~ The important feature of the ice core records in this time interval is a group of prominent peaks in ^{10}Be fallout, well in excess of the characteristic variability of the surrounding time period, between 13900-14500 GICC05 yr BP. If we accept the estimate of Adolphi et al. (2018) that the INTCAL13 and GICC05 time scales are equivalent in this interval, the best-fitting radiocarbon calibration of the NAVC ~~Thompson et al. (2017)~~ (Thompson et al., 2017) would imply a NAVC-GICC05 yr BP offset of 20820 yr. Event matching ~~between varve thickness records and ice core climate records~~ in the time range covered by the Newbury glacial section by Ridge et al. (2012) suggested a NAVC-GICC05 yr BP offset of 20825 yr. However, these values fail to align peaks in the varve and ice core ^{10}Be fallout records (Fig. 22) and, in fact, yield an inverse correlation between the two

records. In contrast, a NAVC-GICC05 yr BP offset near 20950 years aligns significant peaks at NAVC 6950 and 6700 with corresponding peaks in the ice core record at 13975 and 14300 yr BP (Fig. 22). An offset of 20925 yields best alignment of the peaks at NAVC 6950/13975 GICC05 yr BP (the peak at NAVC 6950 dominates a correlation metric; see Fig. 22), but a value of 20950 better aligns both peaks (as the Newbury record has 25-year spacing, the difference between 20920 and 20950 is not significant). Other matches are possible, because the Newbury record displays two major peaks and the ice core records display three major peaks and several adjacent minor ones in this time period. For example, an offset near 20675 would align the peak at NAVC 6700 with the peak at 13975 BP, ~~but displays lower correlation overall.~~

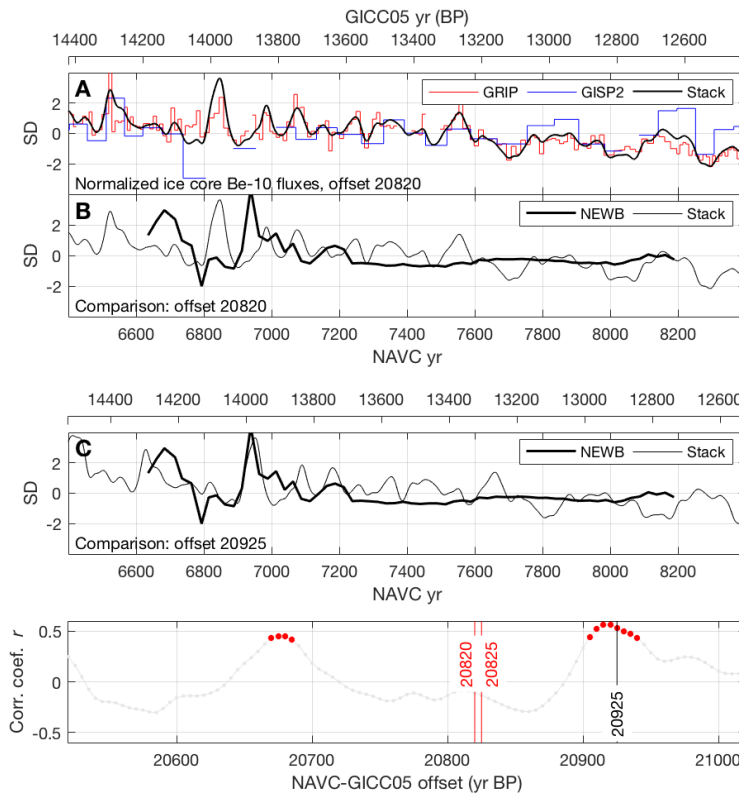


Figure 22. Comparison of the ^{10}Be fallout flux estimate from Newbury with ice core records of ^{10}Be fallout. Plot elements are the same as in Fig. 18. **A**, scaled and centered ice core ^{10}Be flux records from Adolphi et al. (2018), offset to NAVC years with the value of the offset inferred from ^{14}C data (Thompson et al., 2017) and the assumption that INTCAL13 and GICC05 timescales are equivalent in this interval. **B**, scaled and centered Newbury fallout flux estimate compared to the ice core stack for the same offset. **C**, same as B, only for an offset of 20925 yr that aligns peaks in varve and ice core ^{10}Be (see text). **D**, correlation between varve and ice core ^{10}Be records for different offset values. This considers only the glacial part of the section; the minimally variable paraglacial section does not affect the conclusions. Vertical lines highlight other suggested offsets inferred from radiocarbon calibration (20820) and event correlation (20825; see text).

Overall, the most prominent feature of the decadal-resolution ^{10}Be record at Newbury is the strong contrast between ^{10}Be systematics in glacial and paraglacial varves. This, as argued above, indicates that ^{10}Be fallout variability is likely to be enhanced in glacial varves by ^{10}Be runoff from the ice sheet, but suppressed in paraglacial varves by watershed buffering. The glacial part of the section displays significant centennial-scale variability in reconstructed ^{10}Be fallout variability, which has similar magnitude to and can be matched, which can be acceptably correlated with coeval ice core records using values for the NAVC-GICC05 cal yr offset that are close to those inferred from other evidence.

4.2.3 Decadal series, summary results

Although the paraglacial section at Newbury does not show significant variability in ^{10}Be fallout flux, ^{10}Be fallout flux estimates from the glacial sections at Newbury, Kelsey-Ferguson (KF), and Glastonbury (GL) show variability display variability in excess of measurement uncertainty that can be matched to correlated with global ice core ^{10}Be fallout records using NAVC-GICC05 yr BP offsets that are similar to independently estimated values. Despite several unverified assumptions in our reconstruction of ^{10}Be fallout fluxes from Equation 1 and significant uncertainties in relating apparent magnitudes of ^{10}Be fallout variability to those expected from global records, the fact that NAVC ice core matches with similar values of the offset can be made at both sites suggests these observations are consistent with the hypothesis that apparent ^{10}Be flux variations in NAVC sediments are, in fact, recording global true fallout variations.

The NAVC-GICC05 yr BP offsets that produce the best matches at Newbury and KF/GL are different, in the range 20900-20950 for Newbury and 21000-21150 20965-21165 at KF/GL. The match with Newbury is likely more robust substantially more likely to be valid, because it is based on aligning anomalously large, short-duration peaks in both records. Offsets between the NAVC and GICC05 timescales that are expected to be insensitive to possible longer-term variations in R_S or f , whereas the apparent match for the KF and GL sections is not well defined and could be a result of assumptions in the fallout calculation. In general, estimates of the NAVC-GICC05 offset obtained for different times-time ranges are not required to be the same, because the GICC05 time scale is not exactly linear in calendar years (Adolphi et al., 2018). If the apparent matches at Newbury and KF/GL were both valid, the difference would imply that GICC05 is overcounted by ~150-200 years between 14,000-17,000 BP. However, other estimates of the GICC05 - calendar year offset (Adolphi et al., 2018, and references therein) show the opposite, that it is undercounted by ~175 years during this interval, so a GICC05-NAVC offset of 21000 for KF/GL should be equivalent to an offset of 21175 at Newbury, or, conversely, an offset of 20925 at Newbury would be equivalent to 20770 at KF/GL. Thus, nonlinearity in the GICC05 time scale does not resolve the difference in apparent matches. Another theoretical possibility that would allow both matches to be valid would be the presence of a significant time lag between ^{10}Be fallout variations onto the land surface and deposition in NAVC sediments, with this time lag being 200-400 yr longer at KF/GL than at Newbury. However, a watershed residence time and associated fallout-deposition time lag of hundreds of years would not be consistent with the observation that 50-100 year peaks in ^{10}Be deposition at Newbury are recorded at similar resolution to those recorded in ice core records. Overall, these arguments tend to indicate that the match at 20925 at Newbury, the match at 21110 at apparent NAVC ice core matches at Newbury and KF/GL cannot both be valid, and, as discussed above, other arguments indicate that of

these two, the apparent match at KF/GL, or perhaps both, are inaccurate is more likely to be spurious and the one at Newbury is more likely to be valid. In the next sections we discuss this in light of previous, independent approaches to calibrating the NAVC time scale.

4.2.4 Comparison of NAVC-GICC05 yr BP offsets inferred from ^{10}Be flux matching with NAVC-cal yr BP calibration from radiocarbon dates

In previous work, Ridge et al. (2012) and Thompson et al. (2017) estimated the NAVC-calendar year BP offset by choosing the value of the offset that minimizes the weighted mean square of residuals between observed ^{14}C ages on plant macrofossils in individual varves and the INTCAL13 calibration curve, yielding an estimated NAVC-cal yr BP offset of 20820 yr. This procedure assumes that all ^{14}C ages are equally likely to be accurate, so it acts to choose a value for the offset such that the mean of the residuals is zero. However, Ridge et al. (2012) also observed that the residuals from this procedure were not normally distributed, and instead were characterized by a young-skewed distribution, so even though the mean of the residuals was zero, the mode was positive (see Fig. 10 in Ridge et al., 2012) (see Fig. 10 in Ridge et al., 2012, and Fig. 23). They proposed that the skewed distribution was the result of small amounts of postdepositional contamination of samples by younger carbon. This would imply that the correct value of the NAVC-cal yr BP offset should be chosen so as to align the mode of the residuals, rather than their mean, with zero, which would increase the value of the offset by 100-200 years. As shown in Figure 23, if we accept that the GICC05 timescale is equal to true calendar years near 13,500 years BP Adolphi et al. (2018)(Adolphi et al., 2018), then the NAVC-GICC05 yr BP offset of 20925 yr obtained from ^{10}Be flux matching at Newbury is consistent with this reasoning: ^{14}C residuals relative to INTCAL13 with this offset have a mode equal to zero and a young tail. In other words, with this offset, the INTCAL13 calibration curve is closely aligned with the oldest radiocarbon ages observed in clusters of data at several levels in the NAVC (Fig. 23; with the exception of four old outliers that are likely the result of contamination; see Ridge et al., 2012). Thus, the NAVC-GICC05 yr BP offset of 20925 yr inferred from ^{10}Be flux matching at Newbury is consistent with the ^{14}C data set, and in fact may better explain-agree with the ^{14}C data than the estimate of the offset previously obtained by aligning the mean of the ^{14}C residuals with zero.

On the other hand, applying the NAVC-GICC05 yr BP offset of 21110 obtained from ^{10}Be flux matching to the KF/GL records results in a poor alignment between INTCAL13 and the NAVC radiocarbon data set. Predicted ^{14}C ages with this offset are nearly all older than observed, resulting in both the mode and the mean of the residuals being less than zero (Fig. 23) and requiring that essentially all ^{14}C ages be spuriously young due to contamination. Adding the proposed ~ 175 yr undercount in the GICC05 timescale between $\sim 13,000$ and $\sim 17,000$ yr BP (Adolphi et al., 2018) worsens the agreement.

We conclude that (i) the apparent NAVC-ice core ^{10}Be flux match at Newbury is consistent with the ^{14}C data set, but (ii) the ^{10}Be flux apparent match to the KF/GL record results in a value of the offset that is too old to be consistent with the ^{14}C data.

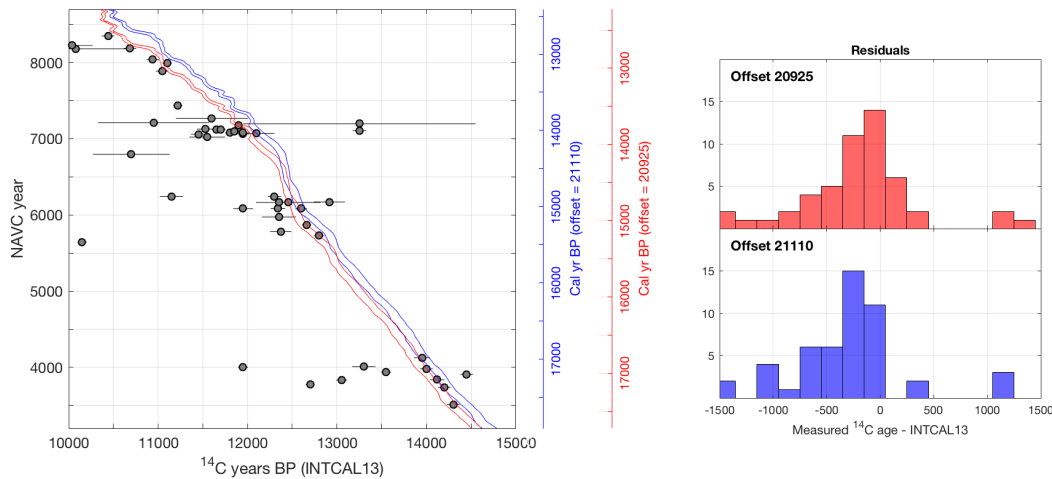


Figure 23. Alignment of radiocarbon ages of plant macrofossils in NAVC varves (Ridge et al., 2012; Thompson et al., 2017) with the INTCAL13 radiocarbon calibration curve, for values of the NAVC-GICC05 yr BP offset estimated from ^{10}Be flux matching (Figs. 18, 22) and the assumption that GICC05 years are equivalent to calendar years. The bands outlined in red and blue are the 68% uncertainty bounds for the INTCAL13 calibration assuming offsets of 20925 and 21110, respectively. The histograms in the right panel show residuals defined as the difference between the measured radiocarbon age of a sample from a particular varve year and the age predicted for that year by the INTCAL13 calibration and the selected offset.

4.2.5 Comparison of NAVC-GICC05 yr BP offsets inferred from ^{10}Be flux matching with those inferred from correlation of varve and ice core climate event correlation records

In addition to calibrating the NAVC to calendar years using ^{14}C ages, Ridge et al. (2012) and Thompson et al. (2017) proposed NAVC-GICC05 offsets based on correlation between abrupt climate events-changes in Greenland recorded in ice core $\delta^{18}\text{O}$ records and ice-marginal events recorded by the NAVC. The premise of this approach is that rapid climate changes likely affected central Greenland and the margin of the LIS in the northeastern US similarly. Thus, cold periods-cooling in Greenland should be associated with reduced-decreases in meltwater production, which is-are recorded by decreased varve thicknesses, and-slower-as well as decreased ice margin retreat rates, or potentially stillstands or readvances, at the LIS margin. Warm-periods-Warmings in Greenland should be associated with increased-increases in meltwater production, increased-varve thickness, and higher-ice margin retreat rates. In this section, we evaluate whether these previously proposed correlations are consistent with the apparent NAVC-GICC05 matches based on comparing NAVC and ice core ^{10}Be fallout discussed in the previous sections.

Events near 14,000 yr BP. For the period near 14,000 cal yr BP, Thompson et al. (2017) showed that the NAVC-cal yr BP offset of 20825 yr derived from fitting ^{14}C data to INTCAL13 also yielded a close event-correlation between Greenland ice core climate records and events in the NAVC (Figure 24A). This event-correlation associates a decrease in varve thickness

near NAVC 6800 and increase near NAVC 6920 (Fig. 24) at Newbury with a rapid cooling and warming in Greenland at the boundaries of stadial GI-1d at 14025 and 13905 GICC05 yr BP, respectively (Lowe et al., 2008; Rasmussen et al., 2014), and aligns places the beginning of the Littleton-Bethlehem Readvance, an ice margin readvance stratigraphically bracketed by NAVC varves 6836-6987, fairly closely with near the beginning of GI-1d.

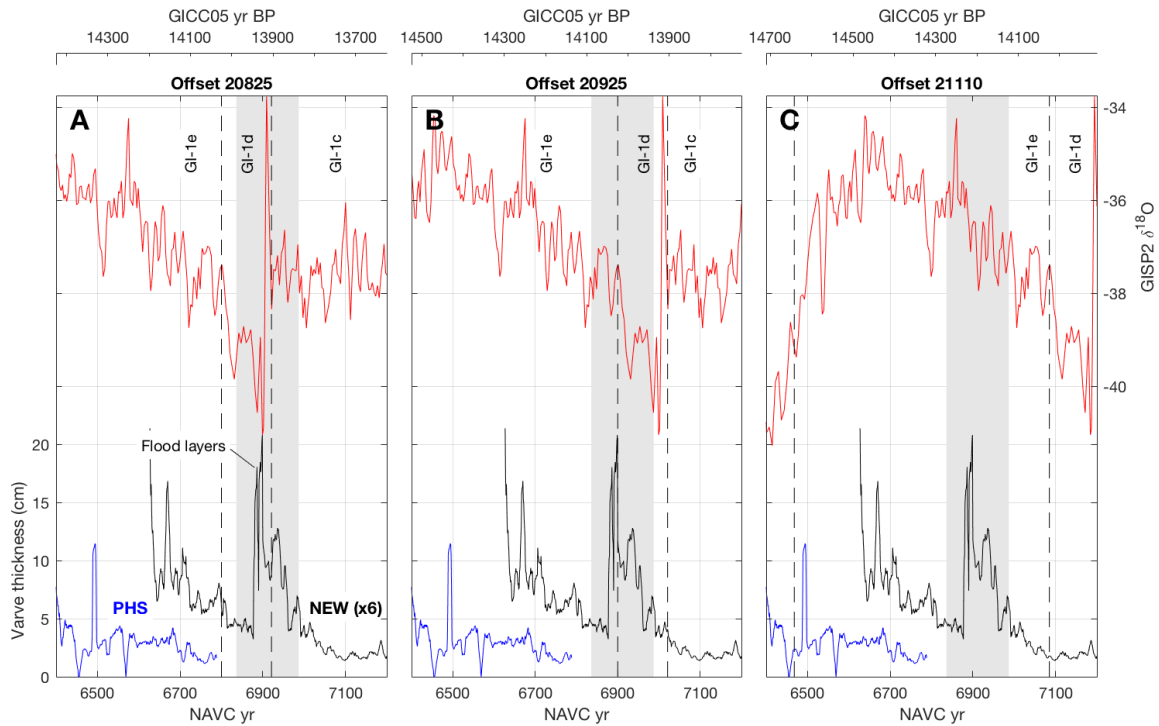


Figure 24. Event correlation Correlation between NAVC and GISP2 climate proxy records near 14,000 GICC05 yr BP. This duplicates Fig. 14 of Thompson et al. (2017), except that the x-axis is reversed for consistency with the rest of the figures in this paper. Records at bottom are 9-year running averages of varve thickness records from Newbury (NEWB) and Perry Hill Basin (PHS; see Ridge et al., 2012). The GISP2 $\delta^{18}\text{O}$ record (Stuiver et al., 1995; Stuiver and Grootes, 2000) is a 3-sample running average on the GICC05 chronology. The gray band shows the minimum duration of the Littleton-Bethlehem Readvance inferred from varves directly underlying and overlying the readvance till (see Thompson et al., 2017). Panel **A** uses the offset proposed as the best event correlation by Ridge et al. (2012) and Thompson et al. (2017), which is the same as the offset derived from fitting to INTCAL13 by Thompson et al. (2017). **B** uses the offset that provides the best match between the ^{10}Be flux at Newbury and the ice core stack (Fig. 22). **C** uses the offset that provides the best match between the ^{10}Be flux at KF/GL and the ice core stack (Fig. 18). Note that the anomalously thick varves near NAVC 6900 (highlighted in A) are related to a lake outburst flood and therefore have no climate significance (see Ridge et al., 2012). The Greenland climate event boundaries are from Rasmussen et al. (2014)

The NAVC-GICC05 offset of 20925 yr inferred from ^{10}Be flux matching at Newbury (Fig. 22) implies that the Littleton-Bethlehem Readvance began in a precursory cold event prior to the start of GI-1d and ended at the GI-1d termination, which is stratigraphically permissible (Fig. 24B). On the other hand, this ~~match fails to offset~~ does not align appropriate varve thickness changes with the boundaries of GI-1d, ~~and is therefore so it is~~ inconsistent with the hypothesis that cold events in Greenland should be associated with decreased meltwater production at the LIS margin. Therefore, accepting a NAVC-GICC05 yr BP offset of 20925 yr would require ~~abandoning the assumption that the climates at the NAVC and central Greenland were similar, or~~ revising our understanding of the significance of the varve thickness changes at Newbury.

The NAVC-GICC05 yr BP offset of 21110 inferred from ^{10}Be flux matching at KF/GL (Fig. 18) ~~fails to match~~ does not yield any apparent correlation between ice core and NAVC ~~events climate proxy records~~ in this time range, instead placing the Littleton-Bethlehem readvance in a transitional phase of GI-1e (Fig. 24C) and yielding no obvious ~~match~~ alternative correspondence between ice core climate and varve thickness records.

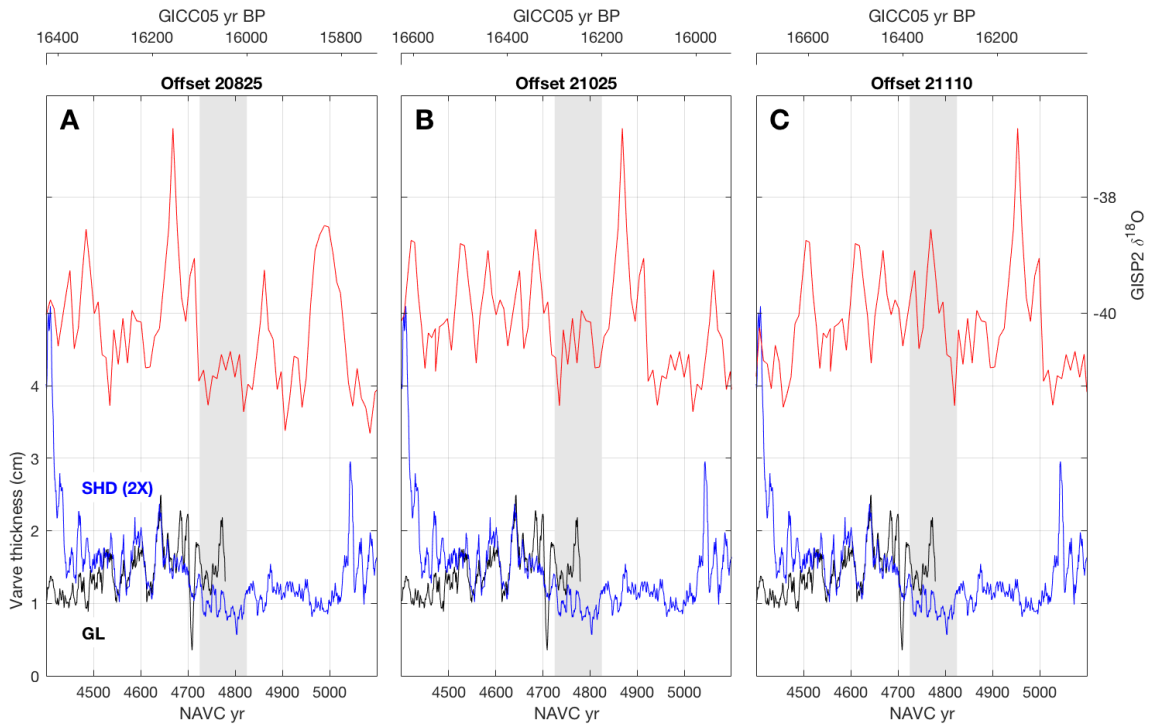


Figure 25. ~~Event correlation~~ Correlation between NAVC and GISP2 climate proxy records near 16,000 GICC05 yr BP. This duplicates Fig. 14A of Ridge et al. (2012), except that the x-axis is reversed for consistency with the rest of the figures in this paper. The plot elements are the same as in Figure 24. The gray band shows the Hatfield event, a period of slowed ice recession or a brief stillstand associated with thinner varves between NAVC ~4725-4825.

Events near 16,000 yr BP. Ridge et al. (2012, ; their Figure 14A) Ridge et al. (2012, their Figure 14A) proposed that a NAVC-GICC05 yr BP offset of 20825 yr also aligned ice core climate and NAVC events at the time of the Hatfield event, an ice margin stillstand between NAVC 4725-4825. This event is associated with an abruptly bounded period of thinner varves at South Hadley (Fig. 25), and a 20820 offset aligns this period with an unnamed minor cold phase in the ice core record (Fig. 25A). Although the NAVC-GICC05 yr BP offset of 21110 instead aligns this event with a warm phase (Fig. 25B), a value of 21025, which is within the fairly broad range of acceptable matches at KF/GL, would align it with a different cold phase (Fig. 25C). It is also true, however, that the offset near 20925 yr inferred from ^{10}Be flux matching at Newbury, with the proposed ~ 150 yr undercount in GICC05 in the 13.5-16 ka range (Adolphi et al., 2018) would result in an offset near the originally proposed value of 20820. Thus, event correlation around the Hatfield event is inconclusive as to whether the ^{10}Be flux matches at either Newbury or KF/GL are valid.

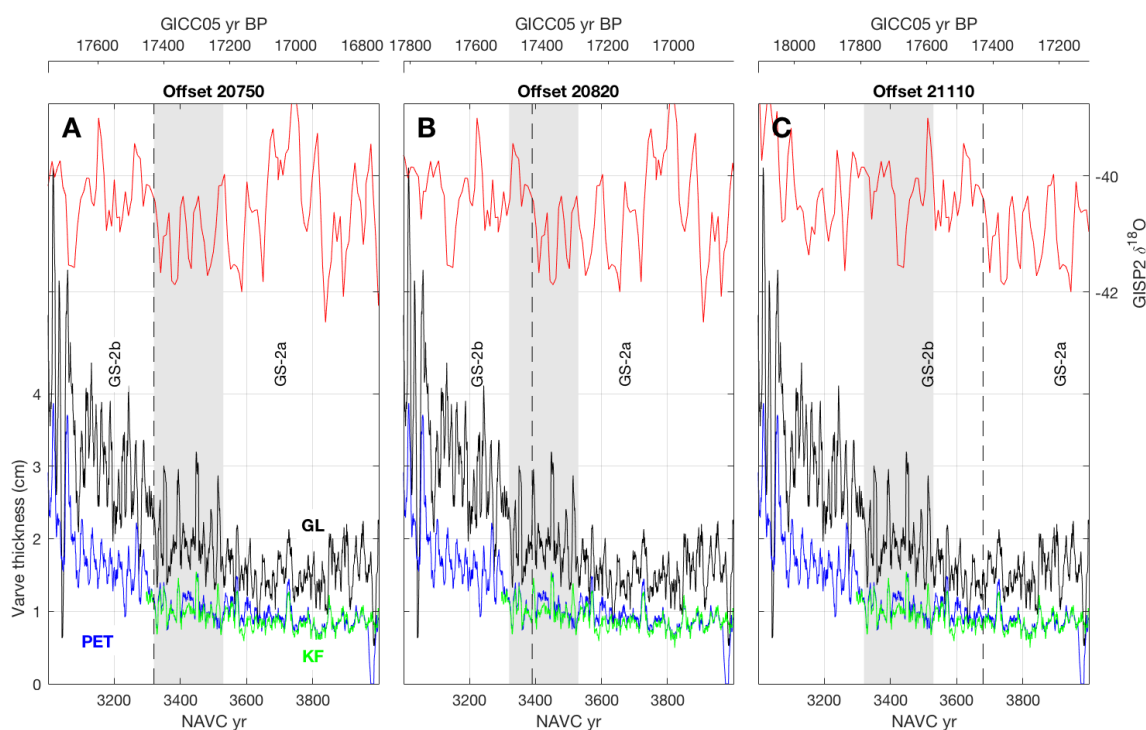


Figure 26. Event correlation Correlation between NAVC and GISP2 climate proxy records near 17,500 GICC05 yr BP. This duplicates Fig. 14B of Ridge et al. (2012), except that the x-axis is reversed for consistency with the rest of the figures in this paper. The plot elements are the same as in Figure 24. Varve thickness records shown are from Glastonbury (GL), Kelsey-Ferguson (KF), and South Windsor, CT Ridge et al. (PET; see 2012). The gray band shows the period of the Chicopee Readance, which is associated with a period of thin varves at NAVC 3320-3530.

Events near 17,000 yr BP. Ridge et al. (2012, their Figure 14A) proposed a NAVC-GICC05 yr BP offset of 20750 yr to align ice core ~~climate and NAVC events~~ and NAVC climate proxy records at the time of the Chicopee Readvance, which is associated with a period of thin varves near NAVC 3320-3530. They noted that this value of the offset aligns century-scale peaks in varve thickness with corresponding ice core $\delta^{18}\text{O}$ variations during an unnamed cold phase (Fig. 26A).
5 The value of 20825 proposed as the best offset for event correlation around the Littleton-Bethlehem and Hatfield events fails to align these peaks and does not correlate the readvance with the cold phase (Fig. 26B). The NAVC-GICC05 yr BP offset of 21110 yr inferred from ^{10}Be flux matching in this time range at KF/GL fails to align the Chicopee Readvance with any cold phase (Fig. 26C). However, if we accept the NAVC-GICC05 yr BP match at 20925 from ^{10}Be flux matching at Newbury and apply the estimate of Adolphi et al. (2018) that GICC05 is undercounted by ~ 175 yr between $\sim 13,500$ and
10 $\sim 17,000$ BP, then a NAVC-GICC05 yr BP offset of 20925 at Newbury implies a NAVC-GICC05 yr BP offset near 20750 at the time of the Chicopee Readvance, which is the same as that proposed for event correlation by Ridge et al. (2012). Thus, the ^{10}Be flux match at Newbury is consistent with event correlation around the Chicopee Readvance, but the ^{10}Be flux match at KF/GL is not.

To summarize, the NAVC-GICC05 offset of 20925 years suggested by correlation between NAVC and ice core ^{10}Be records for the glacial section at Newbury may be consistent with previously proposed correlations between NAVC and ice core climate proxy records, but the NAVC-GICC05 offset near 21110 suggested for the KF/GL section is not.
15

5 Conclusions

5.1 Systematics of Be deposition in varved glacial lake sediments

We found that the majority of ^{10}Be in glacial and paraglacial varves in the NAVC is inherited and is already adsorbed to
20 sediment when supplied to the lake. This means that ~~the majority of~~ variation in total ^{10}Be flux to the lake predominantly reflects variations in the supply of inherited ^{10}Be , which are ~~primarily controlled by variations in sediment grain size~~ mostly the result of grain-size variations, and not variations in fallout ^{10}Be . By using ^9Be as a normalizing isotope, we were able to identify variations in ^{10}Be flux that are not explained by variations in inherited Be supply to the lake and which we therefore attribute to variations in atmospheric ^{10}Be fallout. In most cases, this yielded reconstructed ^{10}Be fallout
25 fluxes that were weakly correlated or uncorrelated with total Be fluxes, which supports the argument that this procedure is effective at separating environmental processes from fallout variations. This is an important element of this study: if we had not measured ^9Be concentrations, it might be difficult or impossible to separate variations in inherited and fallout ^{10}Be fluxes. Having quantified the relationship between grain size and Be concentrations in this study, however, it might be possible in future studies of the NAVC to extract variability in ^{10}Be fallout without ^9Be measurements by
30 instead identifying variations in the total ^{10}Be flux not explained by grain size, which would be similar to the approach of multivariate correlation with various sedimentological proxies applied in other studies (e.g., Czymzik et al., 2016). Regardless, using ^9Be as a normalizing isotope appears simpler.

5.2 Variations in ^{10}Be fallout flux

Our initial strategy in this study was to test the hypothesis that ^{10}Be fallout variations are recorded in NAVC sediments by trying to identify the characteristic 11-year solar variability period in ^{10}Be fallout variations. This strategy was not successful, ~~most likely~~ because of the ~~predominance~~ high ratio of inherited ^{10}Be ~~in relation~~ to fallout ^{10}Be in NAVC
5 sediments. Expected fallout variability of 15-20% around the mean associated with the 11-year solar cycle translates into variability in total ^{10}Be flux that has similar magnitude to measurement uncertainty. Thus, we were not able to distinguish short-period solar forcing of ^{10}Be fallout variations, if present, from measurement noise.

On the other hand, in 1000-year varve sequences sampled with biennial resolution at two sites, we did observe centennial-scale variability in reconstructed ^{10}Be fallout flux ~~having similar magnitude and period to resembling~~ ^{10}Be
10 fallout variations observed in ice cores. ~~In addition, these variations were reproducible in overlapping varve sequences from two different sites. We conclude~~ This leads us to believe that ^{10}Be concentrations in NAVC sediments do, in fact, record at least some prominent, high-amplitude, variations in ^{10}Be fallout that can potentially be used to correlate NAVC and ice core records.

5.3 ^{10}Be systematics in glacial and paraglacial varve sequences

15 An unexpected result of this study is that glacial varves are likely better suited to reconstructing ^{10}Be fallout than paraglacial varves. Initially, we supposed that paraglacial varves would be more likely to yield a record of ^{10}Be fallout simply because they are typically an order of magnitude thinner than glacial varves, so ^{10}Be fallout would be less diluted by higher sedimentation rates and associated larger inherited Be fluxes. This supposition was incorrect, and we found that variability in ^{10}Be fallout was evident in glacial varve sequences, but nearly entirely suppressed in paraglacial varves.

20 This result is most likely explained by the different roles of the watersheds that contribute to glacial and paraglacial lakes. In a paraglacial environment where the lake is not receiving direct glacial meltwater, the lake watershed consists predominantly of a deglaciated landscape mantled by fresh glacial sediment. A significant fraction of ^{10}Be fallout to the watershed is therefore adsorbed to sediment in developing soils, which limits delivery of fallout ^{10}Be to the lake and buffers variations in fallout rates.

25 In contrast, the contributing watershed of a proglacial lake in direct contact with the ice margin most likely includes large areas of the ablation zone of the ice sheet. Fallout ^{10}Be cannot be stored on the ice in the ablation zone, so each year's ~~accumulation of~~ fallout must be flushed into the lake by supraglacial or englacial discharge during the summer melt season. We hypothesize that this phenomenon can result in substantial focusing of fallout ^{10}Be in glacial lake sediment as well as a minimal lag time between fallout variations and recording of those variations in glaciolacustrine sediment
30 records. If true, this implies that varved glacial lake sediments, if deposited in a lake with a large supraglacial watershed, may be very effective recorders of atmospheric ^{10}Be fallout. This hypothesis could easily be tested in modern proglacial lakes with large contributing areas on the ice surface, perhaps in west Greenland.

5.4 Correlation of the NAVC to ice core records by ^{10}Be flux matching

We ~~obtained possible matches~~ found values of the NAVC-GICC05 cal yr offset that resulted in acceptable correlations between reconstructed variations in ^{10}Be fallout flux in NAVC sediments and an ice core ^{10}Be flux stack for two varve sequences: a sequence at Newbury deposited near 14,000 yr BP and overlapping sequences at Kelsey-Ferguson (KF) and Glastonbury (GL) deposited ca. 16,000 - 17,000 yr BP. The NAVC-GICC05 yr BP offsets derived from these matches are not the same for both sections, and also differ by 50-200 years from previously proposed values of the NAVC-calendar year offset inferred from radiocarbon dating of NAVC sediments and event matching between NAVC varve thickness records and Greenland ice core climate records.

Matching ice core ^{10}Be records with ^{10}Be fallout flux variations inferred from the older KF and GL varve sequences implies a NAVC-GICC05 yr BP offset in the range 20965-21165 yr, with the best correlation at 21110 yr. However, the match between the two records mainly relies on aligning millennial-scale trends in the two records, rather than distinct peaks associated with centennial-scale variations. As the KF/GL record is only 1000 yr long, this could lead to spurious results. In addition, centennial-scale variations in ^{10}Be fallout flux in ice core records during this time period are relatively subtle. This match is not consistent with the NAVC-cal yr BP offset inferred from fitting NAVC ^{14}C data to the INTCAL13 calibration curve, even when likely differences between the GICC05 ice core timescale and the true calendar year timescale are taken into account. Although offsets in the range implied by this match yield an acceptable correlation between ice core climate records and NAVC varve thickness records for events near NAVC 4800 / 16,000 GICC05 yr BP (Fig. 25), they ~~do not yield good event correlations~~ are not consistent with the expected relationship between NAVC and ice core climate proxy records for younger or older periods (Figs. 24, 26). Overall, the apparent match between KF/GL ^{10}Be fallout flux and ice core ^{10}Be does not appear consistent with most independent evidence and is unlikely to be valid.

Matching the ^{10}Be fallout record from the glacial section at Newbury with ice core ^{10}Be records, in contrast, relies on correlation of prominent large-magnitude, centennial-scale variations in both records and implies a NAVC-GICC05 offset in the range 20900-20940 (Fig. 22), with the best correlation at 20925 yr. This value of the offset is consistent with the ^{14}C data set and, if the likely undercounting of ice core years in the GICC05 timescale between \sim 13,000-17000 yr BP is considered, also consistent with ~~event correlations between the~~ correlations between NAVC and Greenland ice core climate proxy records for periods surrounding the Hatfield event near NAVC 4800/16,000 GICC05 yr BP (Fig. 25) and the Chicopee readvance near NAVC 3400/17400 GICC05 yr BP (Fig. 26). This value of the offset yields an acceptable correlation between the stratigraphic boundaries of the Littleton-Bethlehem readvance and the GI-1d stadial (Fig. 24), but ~~fails to~~ does not clearly align the associated period of decreased varve thicknesses, which is interpreted to reflect decreased meltwater production during a cold period, with ~~the corresponding~~ stadial boundaries. Thus, ~~although the NAVC-ice core ^{10}Be fallout match at Newbury is consistent with the majority of independent evidence, it is not consistent with one important constraint provided by the expected climatological relationship between climate in central Greenland and at the southern margin of the LIS. Overall, the~~ the 20925 yr NAVC-GICC05 yr BP offset inferred from ^{10}Be fallout matching at Newbury is consistent with the majority of independent evidence and may be valid, but ~~either an unrecognized~~

~~time lag of several decades, or~~ a reassessment of the climate significance of varve thickness variations associated with the Littleton-Bethlehem readvance ~~;~~ would be required to resolve all conflicts with independent data.

5.5 Weaknesses and strategy for improvement

The weakest part of our argument that the correlation between ^{10}Be fallout flux in NAVC sediments at Newbury and the ice core stack is valid is that the correlation is based on a short record, comprising only 600 glacial varves that display two prominent peaks in reconstructed ^{10}Be fallout ~~peaks~~ flux. The ice core stack, on the other hand, includes three major fallout peaks between 14,000-15,000 GICC05 yr BP, as well as a number of relatively high-amplitude secondary features. In addition, we only observed these ^{10}Be fallout peaks at one section, so cannot prove by replication between sections that they represent true fallout variations. Finally, the 25-year sampling resolution at Newbury is long relative to the size of the expected fallout peaks. For example, one of the most prominent apparent peaks is only represented by a single sample, and this effect alone could potentially explain much of the apparent ~ 100 -year difference between ~~the our~~ proposed correlation based on ^{10}Be flux and that based on ~~event matching, correlation of climate records in previous work. Another significant weakness derives from the property of our linear model for reconstructing ^{10}Be fallout flux that the apparent amplitude of reconstructed fallout variations displays a strong dependence on the value chosen for the inherited $^{10}\text{Be}/^9\text{Be}$ ratio R_S , so the amplitude of reconstructed fallout variations cannot be used as a point of comparison with ice core records.~~ These weaknesses could in part be addressed by (i) higher-resolution sampling at the Newbury section to better resolve apparent fallout peaks, as well as (ii) replication of the ^{10}Be fallout record from additional varve sequences that overlap with Newbury in the range NAVC 6000-7000. Several overlapping sections exist, including the Perry Hill Basin site shown in Fig. 24, that could be used for this purpose. Higher-resolution ^{10}Be measurements from older parts of the NAVC might be helpful in resolving whether or not the NAVC-ice core ^{10}Be match at KF/GL is or is not valid, but are less likely to be successful because ^{10}Be fallout variability in the ice core stack between 15,000 - 18000 GICC05 yr BP has lower amplitude than that in the 13,000 - 15,000 GICC05 yr BP range. Overall, collecting higher-resolution ^{10}Be data on replicate sections of glacial varves from ~~this younger time period, the portion of the NAVC~~ between approximately NAVC 5800 and the glacial-paraglacial transition near NAVC 7000 ~~;~~ is is likely the best strategy for resolving the remaining ambiguous results of this study.

Data availability. All data are in the supplementary files.

Author contributions. All authors contributed equally. Ridge had primary responsibility for correlation and sampling of varve sections, DeJong and Bierman had primary responsibility for sample preparation, Rood had primary responsibility for AMS measurements, and Balco had primary responsibility for data analysis and paper production.

Competing interests. Balco is an editor of *Geochronology*.

Acknowledgements. This work was supported by the U.S. National Science Foundation under grants EAR-1103381, EAR-1103532, EAR-1103399, EAR-1103037, and EAR-0639830. Balco was also supported in part by the Ann and Gordon Getty Foundation. We thank Kathryn Lowe and Sarah Strand for help in the field and with grain size analysis, Sophie Greene for carrying out the ⁹Be measurements, Florian Adolphi for supplying ice core and stacked ¹⁰Be fluxes in an easily accessible form, and the staff of the AMS Laboratory at the Scottish Universities Environmental Research Centre (SUERC) for support for Be isotope ratio analyses. [We particularly acknowledge the contributions of two anonymous reviewers in carefully reading the paper and providing constructive and helpful criticism.](#)

Table 1. Characteristics and purpose of varves and sets of varves sampled for Be measurement.

Site identifier	Site name and location	Range of NAVC years sampled	Calendar age BP (offset: 20820 yr)	Vane type	Purpose	Sample format
GL	Glastonbury, Connecticut	3805-4675	17015-16145	Glacial, ice-distal	Long record, decadal resolution	10 varves/sample, with 20-30 yr spacing
KF	Keisley-Ferguson Plant of Redlands Brick Co., South Windsor, Connecticut	3562	17258	Glacial, ice-distal	Summer-winter analysis	Single season of single year
		3564	17256	Glacial, ice-distal	Summer-winter analysis	Single season of single year
		3565-3644	17255-17176	Glacial, ice-distal	Short record, biennial resolution	2 varves/sample, contiguous samples
		3658-4175	17162-16645	Glacial, ice-distal	Long record, decadal resolution	10 varves/sample, with 25-yr spacing
NHT	North Hatfield, Massachusetts	Gray diamict beneath 4667	>16153	Ice-proximal diamiction	Glacial source material	3 varves combined
		4667-4669	16153-16155	Glacial, ice-proximal	Glacial source material	2 varves combined
		4673-4675	16147-16145	Glacial, ice-proximal	Glacial source material	Single season of single year
		5619	15201	Glacial, ice-distal	Summer-winter analysis	Single season of single year
		5620	15200	Glacial, ice-distal	Summer-winter analysis	Single season of single year
		Red diamict beneath 4019	>16801	Subglacial till	Glacial source material	3 varves combined
SHD	South Hadley, Massachusetts	4019-4021	16801-16803	Glacial, ice-proximal	Glacial source material	2 varves combined
		4026-4027	16792-16793	Glacial, ice-proximal	Glacial source material	2 varves combined
NEWB	Newbury, Vermont	6631-8193	14189-12627	Glacial transitioning to paraglacial	Long record, decadal resolution	10-20 varves/sample, with 25-yr spacing
NHV	North Haverhill, New Hampshire	7025	13795	Paraglacial with minimal glacial input	Summer-winter analysis	Single season of single year
		7026	13794	Paraglacial with minimal glacial input	Summer-winter analysis	Single season of single year
		7026-7109	13794-13711	Paraglacial with minimal glacial input	Short record, biennial resolution	2 varves/sample, contiguous samples
		7110	13710	Paraglacial with minimal glacial input	Summer-winter analysis	Single season of single year
		7111	13709	Paraglacial with minimal glacial input	Summer-winter analysis	Single season of single year
930PN ¹	Eatonville, Mohawk Valley, New York (not correlated to NAVC; locally numbered)	(10)	~17,000	Glacial, ice-proximal	Summer-winter analysis	Single season of single year
		(11)	~17,000	Glacial, ice-proximal	Summer-winter analysis	Single season of single year

¹Varves at 930PN are unusual in that they are derived from a limestone source and predominantly carbonate.

References

- Adolphi, F., Ramsey, C. B., Erhardt, T., Edwards, R. L., Cheng, H., Turney, C. S., Cooper, A., Svensson, A., Rasmussen, S. O., Fischer, H., et al.: Connecting the Greenland ice-core and U/Th timescales via cosmogenic radionuclides: testing the synchronicity of Dansgaard–Oeschger events, *Climate of the Past*, 14, 2018.
- 5 Aldahan, A., Possnert, G., Peck, J., King, J., and Colman, S.: Linking the ^{10}Be continental record of Lake Baikal to marine and ice archives of the last 50 ka: Implication for the global dust-aerosol input, *Geophysical research letters*, 26, 2885–2888, 1999.
- Andersen, K. K., Svensson, A., Johnsen, S. J., Rasmussen, S. O., Bigler, M., Röthlisberger, R., Ruth, U., Siggaard-Andersen, M.-L., Steffensen, J. P., Dahl-Jensen, D., et al.: The Greenland ice core chronology 2005, 15–42 ka. Part 1: constructing the time scale, *Quaternary Science Reviews*, 25, 3246–3257, 2006.
- 10 Antevs, E.: The recession of the last ice sheet in New England: American Geographical Society Research Series 11 (with a preface and contributions by J.W. Goldthwait), American Geographical Society, 1922.
- Antevs, E.: The last glaciation, with special reference to the ice sheet in northeastern North America: American Geographical Society Research Series 17, American Geographical Society, 1928.
- Balco, G., Stone, J. O., and Jennings, C.: Dating Plio-Pleistocene glacial sediments using the cosmic-ray-produced radionuclides ^{10}Be and ^{26}Al , *American Journal of Science*, 305, 1–41, 2005.
- 15 Bard, E., Raisbeck, G. M., Yiou, F., and Jouzel, J.: Solar modulation of cosmogenic nuclide production over the last millennium: comparison between ^{14}C and ^{10}Be records, *Earth and Planetary Science Letters*, 150, 453–462, 1997.
- Beer, J., Andree, M., Oeschger, H., Stauffer, B., Balzer, R., Bonani, G., Stoller, C., Suter, M., Wolfli, W., Finkel, R., et al.: ^{10}Be variations in polar ice cores, in: *Greenland Ice Core: Geophysics, Geochemistry, and the Environment*, vol. 33, pp. 66–70, American Geophysical Union Washington, DC, 1985.
- 20 Beer, J., Blinov, A., Bonani, G., Finkel, R., Hofmann, H., Lehmann, B., Oeschger, H., Sigg, A., Schwander, J., Staffelbach, T., et al.: Use of ^{10}Be in polar ice to trace the 11-year cycle of solar activity, *Nature*, 347, 164–166, 1990.
- Belmaker, R., Lazar, B., Tepelyakov, N., Stein, M., and Beer, J.: ^{10}Be in Lake Lisan sediments—A proxy for production or climate?, *Earth and Planetary Science Letters*, 269, 448–457, 2008.
- 25 Bierman, P., Brown, T., Caffee, M., Corbett, L., Fink, D., Freeman, S., Hidy, A., Rood, D., Wilcken, K., Woodruff, T., et al.: Repeated preparation of CRONUS-N quartz standard for ^{10}Be and ^{26}Al at the University of Vermont and analysis at four different AMS laboratories, in: *The 14th International Conference on Accelerator Mass Spectrometry*, 2017.
- Binnie, S. A., Dewald, A., Heinze, S., Voronina, E., Hein, A., Wittmann, H., Von Blanckenburg, F., Hetzel, R., Christl, M., Schaller, M., et al.: Preliminary results of CoQtz-N: A quartz reference material for terrestrial in-situ cosmogenic ^{10}Be and ^{26}Al measurements, *Nuclear Instruments and Methods in Physics Research Section B: Beam Interactions with Materials and Atoms*, 456, 203–212, 2019.
- 30 Boggs, S.: *Principles of Sedimentology and Stratigraphy*, Pearson Education, 2014.
- Czymzik, M., Adolphi, F., Muscheler, R., Mekhaldi, F., Martin-Puertas, C., Aldahan, A., Possnert, G., and Brauer, A.: A varved lake sediment record of the ^{10}Be solar activity proxy for the Lateglacial-Holocene transition, *Quaternary Science Reviews*, 153, 31–39, 2016.
- 35

- Czymzik, M., Muscheler, R., Adolphi, F., Mekhaldi, F., Dräger, N., Ott, F., Słowinski, M., Błaszkiwicz, M., Aldahan, A., Possnert, G., et al.: Synchronizing ^{10}Be in two varved lake sediment records to IntCal13 ^{14}C during three grand solar minima, *Climate of the Past*, 14, 687–696, 2018.
- Dettinger, M. D., Ghil, M., Strong, C. M., Weibel, W., and Yiou, P.: Software expedites singular-spectrum analysis of noisy time series, *EOS, Transactions American Geophysical Union*, 76, 12–21, 1995.
- 5 Feynman, J. and Fougere, P.: Eighty-eight year periodicity in solar-terrestrial phenomena confirmed, *Journal of Geophysical Research: Space Physics*, 89, 3023–3027, 1984.
- Finkel, R. and Nishiizumi, K.: Beryllium 10 concentrations in the Greenland Ice Sheet Project 2 ice core from 3–40 ka, *Journal of Geophysical Research: Oceans*, 102, 26 699–26 706, 1997.
- 10 Ghil, M., Allen, M., Dettinger, M., Ide, K., Kondrashov, D., Mann, M., Robertson, A. W., Saunders, A., Tian, Y., Varadi, F., et al.: Advanced spectral methods for climatic time series, *Reviews of geophysics*, 40, 3–1, 2002.
- Graly, J. A., Reusser, L. J., and Bierman, P. R.: Short and long-term delivery rates of meteoric ^{10}Be to terrestrial soils, *Earth and Planetary Science Letters*, 302, 329–336, 2011.
- Greene, E. S.: Comparing Meteoric ^{10}Be , In Situ ^{10}Be , and Native ^9Be Across a Diverse Set of Watersheds, Master's thesis, University of Vermont, 2016.
- 15 Heikkilä, U., Beer, J., Abreu, J., and Steinhilber, F.: On the atmospheric transport and deposition of the cosmogenic radionuclides ^{10}Be : A review, *Space Science Reviews*, 176, 321–332, 2013.
- Hunt, A., Larsen, J., Bierman, P., and Petrucci, G.: Investigation of factors that affect the sensitivity of accelerator mass spectrometry for cosmogenic ^{10}Be and ^{26}Al isotope analysis, *Analytical chemistry*, 80, 1656–1663, 2008.
- 20 Jull, A. T., Scott, E. M., and Bierman, P.: The CRONUS-Earth inter-comparison for cosmogenic isotope analysis, *Quaternary Geochronology*, 26, 3–10, 2015.
- Krumbein, W. C.: Size frequency distributions of sediments, *Journal of sedimentary Research*, 4, 65–77, 1934.
- Lal, D.: ^{10}Be in polar ice: Data reflect changes in cosmic ray flux or polar meteorology, *Geophysical Research Letters*, 14, 785–788, 1987.
- 25 Lal, D. and Peters, B.: Cosmic ray produced radioactivity on the Earth, in: *Kosmische Strahlung II/Cosmic Rays II*, pp. 551–612, Springer, 1967.
- Lewis, D. W. and McConchie, D.: *Analytical Sedimentology*, Springer Science & Business Media, 2012.
- Ljung, K., Björck, S., Muscheler, R., Beer, J., and Kubik, P. W.: Variable ^{10}Be fluxes in lacustrine sediments from Tristan da Cunha, South Atlantic: a solar record?, *Quaternary Science Reviews*, 26, 829–835, 2007.
- 30 Lowe, J. J., Rasmussen, S. O., Björck, S., Hoek, W. Z., Steffensen, J. P., Walker, M. J., Yu, Z., Group, I., et al.: Synchronisation of palaeoenvironmental events in the North Atlantic region during the Last Termination: a revised protocol recommended by the INTIMATE group, *Quaternary Science Reviews*, 27, 6–17, 2008.
- Mann, M., Beer, J., Steinhilber, F., and Christl, M.: ^{10}Be in lacustrine sediments—A record of solar activity?, *Journal of atmospheric and solar-terrestrial physics*, 80, 92–99, 2012.
- 35 Muscheler, R., Joos, F., Beer, J., Müller, S. A., Vonmoos, M., and Snowball, I.: Solar activity during the last 1000 yr inferred from radionuclide records, *Quaternary Science Reviews*, 26, 82–97, 2007.
- Nishiizumi, K., Imamura, M., Caffee, M. W., Southon, J. R., Finkel, R. C., and McAninch, J.: Absolute calibration of ^{10}Be AMS standards, *Nuclear Instruments and Methods in Physics Research Section B: Beam Interactions with Materials and Atoms*, 258, 403–413, 2007.

- Pavich, M. J., Brown, L., Klein, J., and Middleton, R.: ^{10}Be accumulation in a soil chronosequence, *Earth and Planetary Science Letters*, 68, 198–204, 1984.
- Rasmussen, S. O., Seierstad, I. K., Andersen, K. K., Bigler, M., Dahl-Jensen, D., and Johnsen, S. J.: Synchronization of the NGRIP, GRIP, and GISP2 ice cores across MIS 2 and palaeoclimatic implications, *Quaternary Science Reviews*, 27, 18–28, 2008.
- 5 Rasmussen, S. O., Bigler, M., Blockley, S. P., Blunier, T., Buchardt, S. L., Clausen, H. B., Cvijanovic, I., Dahl-Jensen, D., Johnsen, S. J., Fischer, H., et al.: A stratigraphic framework for abrupt climatic changes during the Last Glacial period based on three synchronized Greenland ice-core records: refining and extending the INTIMATE event stratigraphy, *Quaternary Science Reviews*, 106, 14–28, 2014.
- Ridge, J.: The North American Glacial Varve Project, <http://geology.tufts.edu/varves>, accessed May 2020, 2012.
- 10 Ridge, J. C.: The Quaternary glaciation of western New England with correlations to surrounding areas, in: *Developments in Quaternary Sciences*, vol. 2, pp. 169–199, Elsevier, 2004.
- Ridge, J. C. and Toll, N. J.: Are late-glacial climate oscillations recorded in varves of the upper Connecticut Valley, northeastern United States?, *GFF*, 121, 187–193, 1999.
- Ridge, J. C., Balco, G., Bayless, R. L., Beck, C. C., Carter, L. B., Dean, J. L., Voytek, E. B., and Wei, J. H.: The new North American Varve
15 Chronology: A precise record of southeastern Laurentide Ice Sheet deglaciation and climate, 18.2–12.5 kyr BP, and correlations with Greenland ice core records, *American Journal of Science*, 312, 685–722, 2012.
- Rittenour, T. M., Brigham-Grette, J., and Mann, M. E.: El Niño-like climate teleconnections in New England during the late Pleistocene, *Science*, 288, 1039–1042, 2000.
- Simon, Q., Thouveny, N., Bourlès, D. L., Valet, J.-P., Bassinot, F., Ménabréaz, L., Guillou, V., Choy, S., and Beaufort, L.: Authigenic
20 $^{10}\text{Be}/^9\text{Be}$ ratio signatures of the cosmogenic nuclide production linked to geomagnetic dipole moment variation since the Brunhes/Matuyama boundary, *Journal of Geophysical Research: Solid Earth*, 121, 7716–7741, 2016.
- Steig, E. J., Morse, D. L., Waddington, E. D., and Polissar, P. J.: Using the sunspot cycle to date ice cores, *Geophysical Research Letters*, 25, 163–166, 1998.
- Steinhilber, F., Abreu, J. A., Beer, J., Brunner, I., Christl, M., Fischer, H., Heikkilä, U., Kubik, P. W., Mann, M., McCracken, K. G., et al.:
25 9,400 years of cosmic radiation and solar activity from ice cores and tree rings, *Proceedings of the National Academy of Sciences*, 109, 5967–5971, 2012.
- Stone, J.: A rapid fusion method for separation of beryllium-10 from soils and silicates, *Geochimica et Cosmochimica Acta*, 62, 555–561, 1998.
- Stuiver, M. and Grootes, P. M.: GISP2 oxygen isotope ratios, *Quaternary Research*, 53, 277–284, 2000.
- 30 Stuiver, M., Grootes, P. M., and Braziunas, T. F.: The GISP2 $\delta^{18}\text{O}$ climate record of the past 16,500 years and the role of the sun, ocean, and volcanoes, *Quaternary research*, 44, 341–354, 1995.
- Thompson, W. B., Dorion, C. C., Ridge, J. C., Balco, G., Fowler, B. K., and Svendsen, K. M.: Deglaciation and late-glacial climate change in the White Mountains, New Hampshire, USA, *Quaternary Research*, 87, 96–120, 2017.
- Yiou, F., Raisbeck, G., Baumgartner, S., Beer, J., Hammer, C., Johnsen, S., Jouzel, J., Kubik, P., Lestringuez, J., Stievenard, M., et al.:
35 Beryllium 10 in the Greenland Ice Core Project ice core at Summit, Greenland, *Journal of Geophysical Research: Oceans*, 102, 26 783–26 794, 1997.