

# Towards *in-situ* U–Pb dating of dolomite

Bar Elisha<sup>1,3</sup>, Perach Nuriel<sup>1</sup>, Andrew Kylander-Clark<sup>2</sup>, Ram Weinberger<sup>1,3</sup>

<sup>1</sup>Geological Survey of Israel, Jerusalem, Israel

<sup>2</sup>Department of Earth Sciences, University of California, Santa Barbara, CA, USA

5 <sup>3</sup>Department of Earth and Environmental Sciences, Ben-Gurion University, Be'er Sheva, Israel

Correspondence to: Bar Elisha (brelisha@bgu.ac.il)

**Abstract.** Recent U–Pb dating by laser ablation ICP-MS has demonstrated that reasonable precision (3–10%,  $2\sigma$ ) can be achieved for high-resolution dating of texturally distinct calcite phases. Absolute dating of dolomite, for which biostratigraphy and traditional dating techniques are very limited, remains challenging although it may resolve many fundamental questions related to the timing of mineral-rock formation by syngenetic, diagenesis, hydrothermal, and epigenetic processes. In this study we explore the possibility of dating dolomitic rocks via recent LA-ICP-MS dating techniques developed for calcite. The *in-situ* U–Pb dating was tested on a range of dolomitic rocks of various origins from the Cambrian to Pliocene age—all of which from well-constrained stratigraphic sections in Israel. We present imaging and chemical characterizations techniques that provide useful information on interpreting the resulted U–Pb ages and discuss the complexity of *in-situ* dolomite dating in terms of textural features that may affect the results. Textural examinations indicate zonation and mixing of different phases at the sub-millimetre scale ( $<1 \mu\text{m}$ ), and thus Tera-Wasserburg ages represent mixed dates of early diagenesis and some later epigenetic dolomitization event(s). We conclude that age mixing at the sub-millimetre scale is a major challenge in dolomite dating that needs to be further studied and note the importance of matrix-matched standards for reducing uncertainties of the dated material.

## 20 **1 Introduction**

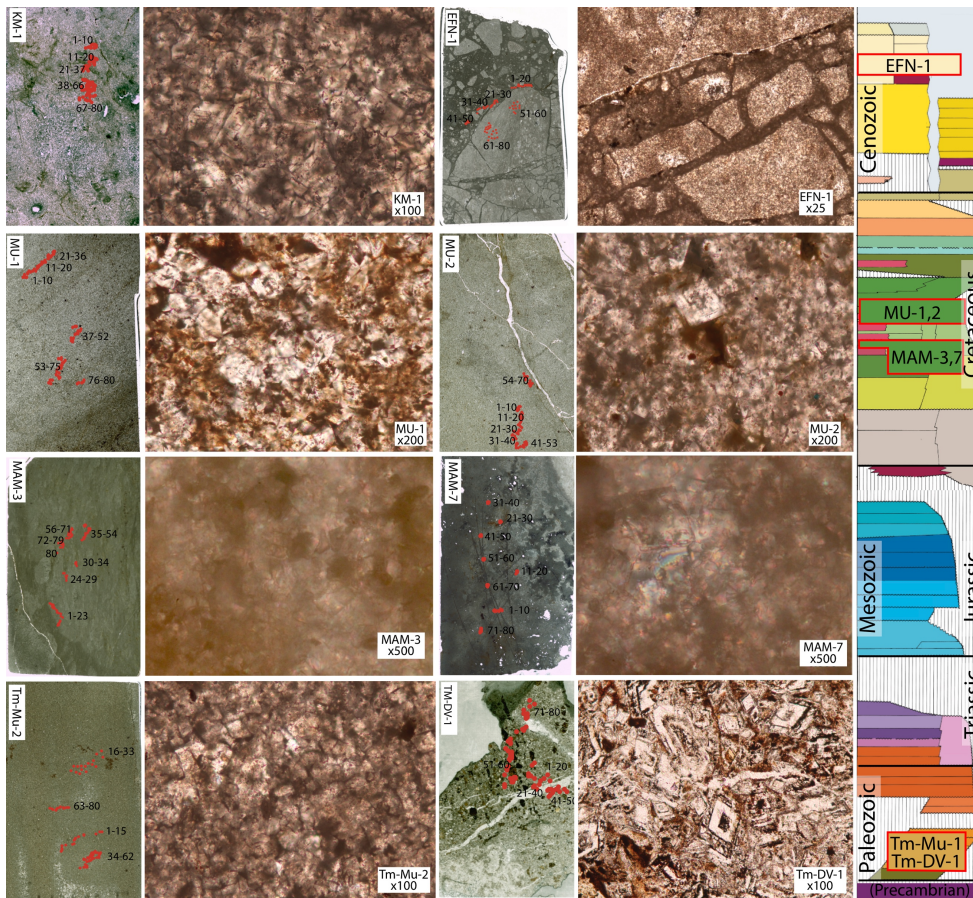
Recent developments of laser ablation inductively coupled plasma mass spectrometry (LA-ICP-MS) has opened a new avenue for measuring absolute ages of carbonates, thus improving the understanding of many fundamental geological processes, such as fossilization (Li et al., 2014), tectonic faulting (Ring et al., 2016; Roberts and Walker., 2016; Nuriel et al., 2017; Parrish et al., 2018), duration of sedimentation, and diagenesis (Hodson et al., 2016; Godeau et al., 2018). Despite the low concentrations of U and radiogenic Pb in carbonates ( $<10 \text{ ppm}$  and  $<2 \text{ ppm}$ , respectively) and the considerable amounts of initial Pb (up to 100 ppm), a reliable age determination of calcite is obtained via isochron regression on a Tera-Wasserburg inverse concordia diagram (Tera and Wasserburg, 1972). By this method, the initial Pb composition and the age are determined by the upper and lower intercept of the regression isochron with the concordia curve. While LA-ICP-MS analyses on calcite evolved to be a conventional method of dating (Roberts et al., this issue), a thorough methodology for dating other carbonates, such as dolomite, is still needed (Guillong et al., this issue).

Dolomite is vastly abundant in exposed stratigraphic sequences, and its manifestation in the geological record increases towards older sedimentary strata (Warren, 2000). Nonetheless, it is very rare in modern environments and has seldom been successfully grown in laboratory experiments at near-surface conditions (Machel, 2004, and references therein). Although the conditions and kinetics promoting dolomite growth are not well understood, its formation is considered a by-product of chemical reactions between Mg-rich fluids and calcite-bearing rocks. Previous studies suggested that dolomite is formed either by diagenetic replacement of limestone during deposition (syngenetic; Sass, 1969), soon after deposition (early diagenetic; Ahm et al., 2018; Frisia et al., 2018), or at a later stage (epigenetic; Sibley and Gregg, 1984). Distinguishing between different dolomitization processes is challenging, yet critical for resolving some of the issues and ambiguities related to the formation of dolomitic rocks. Accurate U–Pb absolute dating of dolomite by LA-ICP-MS could contribute to a better understanding of the dolomitization process by placing these event(s) in the proper geological context. However, dating dolomitic rocks is more challenging than dating calcite, particularly because their complicated growth history is often characterized by the formation of multi-phase microcrystalline grains (e.g. partial replacement, zoning). Growth-zones cannot be separated physically, and their size is often smaller than the diameter of the laser spot (usually >50 µm). In addition, well-characterized dolomite reference materials (RM) are currently unavailable for the LA community and differences between calcite and dolomite in terms of matrix-effect and plasma efficiency are not well understood (Guillong et al., this issue).

Previous U–Pb dating of dolomite on whole-rock samples of U-rich dolostones, conducted in the highest level of cleanroom standards, yielded scattered ages (Winter and Johnson, 1995; Hoff et al., 1995; Ovchinnikova et al., 2007; Polyak et al., 2016). These studies suggested that *in-situ* dating of dolomites should be feasible, and indeed several studies recently reported on successful *in-situ* age determination of dolomite using the LA-ICP-MS methodology (Burisch et al., 2018; Salih et al., 2019; Hu et al., 2020; Incepri et al., 2020; Mueller et al., 2020). In order to examine the suitability of conventional LA-ICP-MS calcite procedure for dolomite geochronology by using common RM, we studied dolomitic rock samples from Israel with well-defined stratigraphic ages. We show how differences in texture, crater morphology, detrital impurities, and down-hole fractionation trends between RMs and dolomite can affect the resulted ages and discuss textural characteristics and chemical properties of successful and unsuccessful dolomite dating. Finally, we consider the age results in the geological context of the studied rocks.

## 1.1 Studied dolomites

Dolomitic rocks in Israel and environs include syngenetic to early diagenetic dolomites, epigenetic dolomites, hydrothermal dolomites and mixed/hybrid ones. This study was applied to dolomite rocks whose ages are well constrained by field relations and dates of adjacent geological units (Fig. 1). Thin section scans and representative photomicrographs of each studied sample are provided in Fig. 1 and are described in the following sections. Cathodoluminescence images of representative carbonate material, used to infer slight changes in fluid composition (e.g. Mn<sup>2+</sup>, Fe<sup>2+</sup> content), and/or precipitation conditions, are presented in Fig. 2.



65 **Figure 1: Thin-sections scans and representative photomicrographs of each dolomitic sample from this study. Red dots on thin-section scans showing the locations of LA-ICP-MS analyses. Width of thin-sections are 27 mm. Sample locations along the stratigraphic column of Israel is also provided in the right panel.**

### 1.1.1 Syngenetic Cambrian dolomites and hydrothermal dolomites (Timna Valley)

65 Cambrian sediments are exposed in southern Israel and unconformably overlie Precambrian crystalline basement rocks of the Arabian-Nubian Shield (Fig. 1; Beyth et al., 1999). In the Timna Valley, southern Israel, Cambrian dolomitic rocks of the  
70 Timna Formation are well-known for their copper deposits and ancient to present-day mining and are considered to have formed as early diagenetic in a marine environment at 25–50 °C (Segev, 2016). Based on fluid inclusions and petrographic studies, Eliyahu et al. (2017) suggested that the Timna formation dolomites were formed in high temperatures and the dolomites are epigenetic in nature. Dolomitic rocks of the Timna Formation (sample Tm-MU-2; Table 1) represent the earliest oceanic transgression in the area, constrained by trilobite burrowing to upper Georgian (~520 Ma; Parnes, 1971) and by a dike  
75 intrusion dated to ~532 Ma (Beyth and Heimann, 1999). Sample Tm-MU-2 (Fig. 1) is composed of reddish sparry dolomite grains <10 µm in size, with minor iron-oxides scattered within the sample.

Dolomite veins of later epigenetic diagenesis (Sample Tm-DV-1; Fig. 1) are found in the crystalline basement rock and sandstones in Timna Valley, in association with copper, quartz, calcite and Mn- and Cu-carbonates. Sample Tm-DV-1 is composed of euhedral zoned dolomite crystals of up to 200  $\mu\text{m}$ , with opaque cores and transparent rims. It was previously suggested that these euhedral dolomite crystals of epigenetic open-space filling cements, associated with Cu mineralization, are related to low-temperature ( $\sim 260$   $^{\circ}\text{C}$ ; Beyth et al., 1997) hydrothermal activity and mineralization that was assumed to have occur during Neogene Times (Kohn et al., 2019). On the other hand, Eliyahu et al. (2017) suggested that all Cu mineralization in the Timna valley is associated with epigenetic hydrothermal dolomite mineralization, driven by basal fluids. The zoned hydrothermal dolomite grains of sample Tm-DV-1 are slightly zoned under CL (Fig. 2) with very similar luminescence, suggesting minimal changes in fluid composition and/or precipitation conditions.

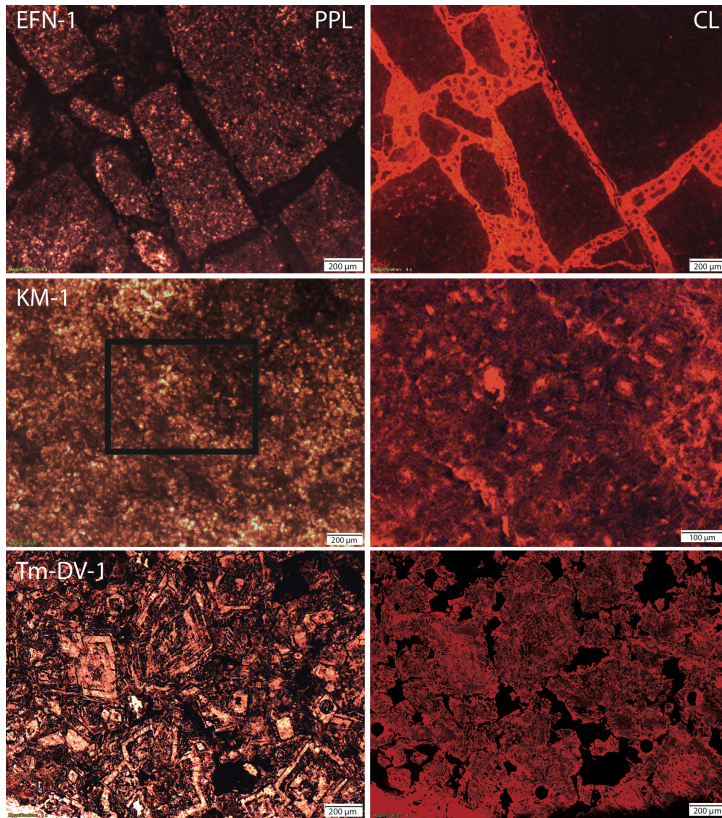
### 1.1.2 Syngenetic and early diagenetic dolomites (Mount Carmel and Umm el Fahm Ridge)

Dolomitic rocks dominate the exposed Cretaceous sequence of Mount Carmel, Umm el Fahm Ridge and Judean Mountains, which were part of an extensive shallow carbonate platform. The studied Cenomanian dolomitic rocks of the Deir Hanna Formation (Fig. 1) are exposed on the SE flank of the Umm el Fahm anticline near the village of Mei-Ami (Sass et al., 2013). These rocks are underlain and overlain by volcanic flows that are dated to  $99 \pm 0.5$  and  $95 \pm 0.5$  Ma, respectively (Ar-Ar; Segev et al., 2002). They were described as syngenetic dolomites based on preferred orientations of dolomite grains, with a c-axis maximum perpendicular to the bedding planes (Sass, 1969). Samples MAM-3 and MAM-7 (Fig. 1) are composed of fine-grained ( $<10$   $\mu\text{m}$ ) micritic dolomite, which reflect continuity of reefs along fine-grained, well-bedded shelf basin rocks (Sass and Bein, 1978). Dolomitic rocks of the Zikhron Formation from Mount Carmel are considered 'early diagenetic' (Sass and Bein, 1978; Segev and Sass, 2009; Fig. 1) and crop out between two volcanic flows of  $97 \pm 0.5$  and  $95 \pm 0.5$  Ma (Segev, 2009). Samples MU-1 and MU-2 (Fig. 1) are composed of  $\sim 40$   $\mu\text{m}$  dolomite grains and represent sparry dolomite mosaic of similar ages as MAM-3 and MAM-7. Dolomitic rocks from the Albian Yagur Formation crop out near the Kerem Maharal village and are overlain by the oldest (99 Ma) volcanic flow known in Mount Carmel. Samples KM-1 (Fig. 1) is a sparry dolomite with  $\sim 60$   $\mu\text{m}$  dolomite grains and is considered as an 'early diagenetic' dolomite. The non-homogenized luminescence of the sparry sample KM-1 (Fig. 2) may indicate a possible mixture of phases that precipitated under different conditions.

### 1.1.3 Fault-related Epigenetic dolomitization of early diagenetic dolomites – (Judean Desert)

Strata of dolomitic rocks are abundant at the western margin of the Dead Sea basin and include the Cenomanian Hevion, Zafit and Tamar formations (Sneh and Avni, 2016). These dolomitic rocks are considered 'early diagenetic' dolomites that were later faulted and cemented by epigenetic dolomite during the activity along the Dead Sea fault. Dolomite-cemented breccias were sampled along one of the major faults of the Dead Sea western margin fault zone (En Feshkha Fault; sample EFN-1; Fig. 1) and preserve microstructures of mosaic (sparry) dolomite fragments bounded by sparry dolomite cement. The bright

luminescence of the cement material in sample EFN-1 suggest a single phase of precipitation that is distinctively different from precipitation conditions of the fragment material (Fig. 2).



110

**Figure 2. PPL images (left panels) and Cathodoluminescence (CL) images (right panels) of representative studied samples. Note the differences in CL colors of breccia fragments and cement in Sample EFN-1, the non-homogeneous CL response in sample KM-1 and the zoned dolomite crystals in sample Tm-DV-1.**

## 2 Methods

115 For LA-ICP-MS analyses of dolomites we prepared 40  $\mu\text{m}$  thick thin sections polished to 1  $\mu\text{m}$ . U-Pb LA-ICP-MS analyses were performed at the Department of Earth Science, University of California, Santa Barbara, following the analytical procedure described in Nuriel et al., (2017) for calcite-bearing rocks. Samples were ablated using a *Photon Machines* 193 nm ArF Excimer laser equipped with a HelEx ablation cell and coupled to a *Nu Instruments Plasma 3D* multi-collector ICP-MS. Both  
120 RMs and unknowns were ablated with similar spot size of 85  $\mu\text{m}$  and fluence of  $\sim 1 \text{ J/cm}^2$ . In order to remove any contaminants, and especially initial Pb from the sample surface, all samples were cleaned with methanol and pre-ablated (4 pulses) prior to a 20 s baseline. Material was then ablated for 15 s at 10 Hz, resulting in a pit depth of  $\sim 15 \mu\text{m}$ . On the MC-ICP-MS, masses  $^{202}\text{Hg}$ ,  $^{204}\text{Pb}$ ,  $^{206}\text{Pb}$ ,  $^{207}\text{Pb}$ , and  $^{208}\text{Pb}$  were measured on Daly detectors, and masses  $^{232}\text{Th}$  and  $^{238}\text{U}$  were measured on Faraday

detectors at low resolution (300, 10% valley definition) using an integration time of 100 ms. We used a two-steps standardization technique using NIST614 glass and the WC-1 calcite reference material (Roberts et al., 2017) following the procedure outlined in Nuriel et al. (2017). Data were reduced using Iolite v. 2.5 (Paton et al., 2010) and the  $^{238}\text{U}/^{206}\text{Pb}$  and  $^{207}\text{Pb}/^{206}\text{Pb}$  ratios for each analysis were plotted on Tera–Wasserburg diagrams using Isoplot and IsoplotR (Ludwig, 2012; Vermeesch, 2018); U and Pb concentrations were calculated semi-quantitatively, using NIST614 as the primary reference material (RM). Uncertainties (2 sigma) were propagated on individual unknown ratios such that  $^{207}\text{Pb}/^{206}\text{Pb}$  (2%) and  $^{206}\text{Pb}/^{238}\text{U}$  (4%) ratios of a zircon standard, run throughout the session (Mud Tank; Black and Gulson, 1978), yielded a single population; this resulted in reasonable mean square weighted deviations (MSWDs) for the calculated ages of calcite RMs. Secondary calcite RMs—ASH-15 ( $2.9646 \pm 0.01$  Ma; Nuriel et al., this issue) and Duff Brown ( $64 \pm 0.7$  Ma; Hill et al., 2016)—yielded dates within uncertainty of their accepted values (ASH-15:  $2.973 \pm 0.09$  MSWD = 1.3, n = 107; Duff Brown:  $63.2 \pm 2.3$  Ma, MSWD = 1.9, n = 106). Uncertainty correlations are calculated following Schimtz and Schoene, 2007. The Pb concentration for each spot analysis was calculated by the total counts of Pb isotopes, compared to the NIST glass value (2.32 ppm). The  $^{204}\text{Pb}$  concentration was calculated using the  $^{206}\text{Pb}$  concentration and assuming a Stacey-Kramers  $^{206}\text{Pb}/^{204}\text{Pb}$  ratio to avoid difficulties related to the Hg interference on  $^{204}\text{Pb}$ .

Following LA analyses, we used several techniques to characterize the studied dolomite samples in detail. Whole-rock analyses of Rare Earth Element (REE) composition was done on Perkin Elmer NexION 300D ICP-MS instrument. Dolomite powders were dissolved, evaporated, and diluted to 1:3000 in 0.1N nitric acid solution before mixed with internal standards. The raw data were corrected for blank, drift and isobaric interferences and converted into concentrations in ppm using USGS RM. The overall uncertainties are estimated to be less than 5%.

Imaging of the LA craters and identifying major phases in the samples was performed by using a field-emission FEI Scanning Electron Microscope (SEM) at the Ilse Katz Institute for Nanoscale Science & Technology at Ben-Gurion University of the Negev, Israel, with 3 kV acceleration voltage, 0.1 nA current and 30° stage tilt. This device is equipped with ‘Oxford’ EDS detector and EBSD (Electron backscatter diffraction) sensor, used for producing crystallographic phase maps. For EBSD mapping, the instrument was setup to 15 kV accelerating voltage and 26 nA current, 70° tilt, 2x2 binning and 0.1  $\mu\text{m}$  step size. Wave Dispersion Spectroscopy (WDS) maps were preformed using a JEOL microprobe at the Hebrew University, Israel, with accelerating voltage of 15–25 kV, beam current of 80 nA, step size of 0.5  $\mu\text{m}$  and dwell time of 0.35 s.

X-ray diffraction (XRD) patterns were acquired in Bragg-Brentano geometry at the Geological Survey of Israel using a PANalytical X'Pert diffractometer with  $\text{CuK}\alpha$  radiation operated at 45 kV and 40 mA. Samples were scanned from 3 to 70° 2 $\theta$  at a step size of 0.013° 2 $\theta$ , using a PIXcel detector in continuous scanning line (1D) mode with an active length of 3.35°. The equivalent time per step was ~30 s, resulting in a total measurement time of about 10 min per scan. Mineral phase identification and semi-quantification was performed using HighScore Plus® software based on ICSD database.

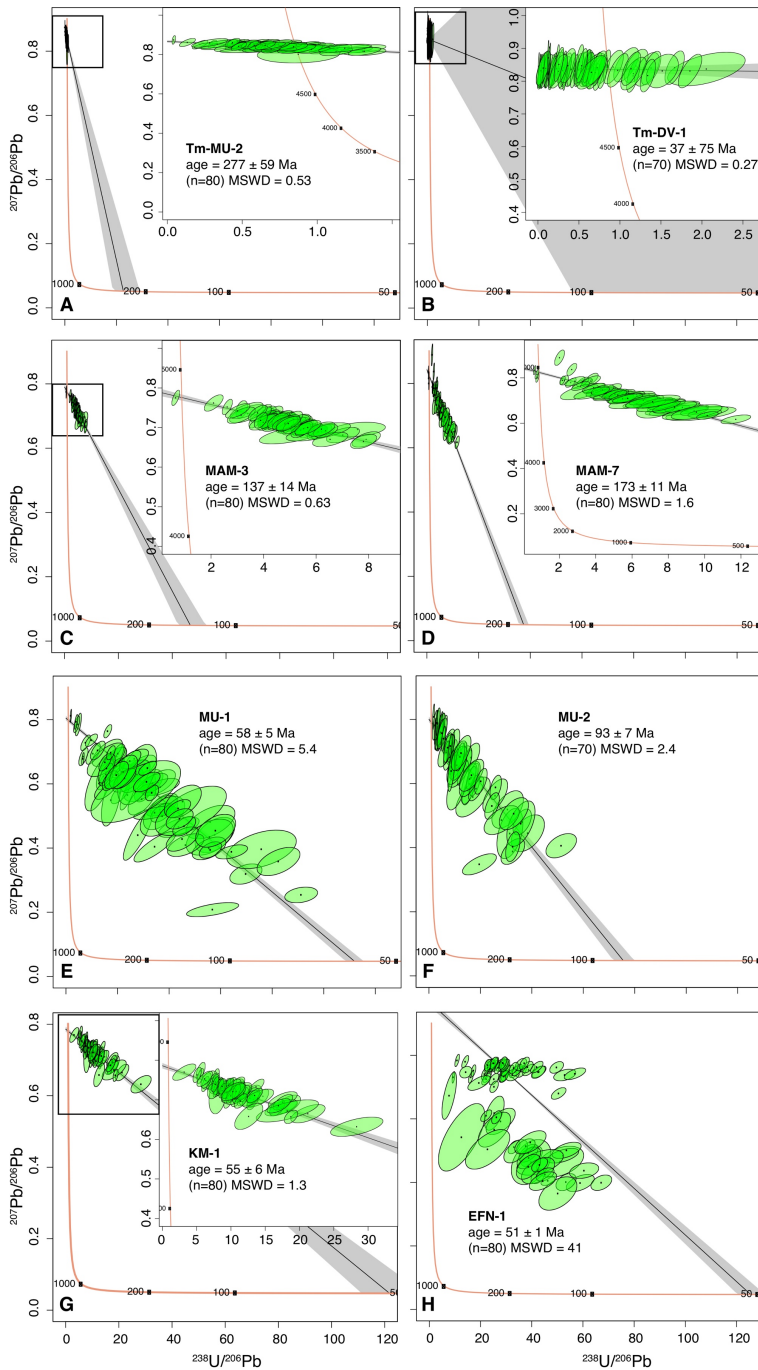
### 3 Results

155 We present U–Pb ages of eight dolomite samples (Table 1), and a ‘Tera-Wasserburg’ inverse concordia diagrams as  $^{207}\text{Pb}/^{206}\text{Pb}$  and  $^{238}\text{U}/^{206}\text{Pb}$  linear regression isochrons of these samples (Fig. 3). The  $^{207}\text{Pb}/^{206}\text{Pb}$  (Initial Pb) values were not anchored to specific values and range between  $0.7862 \pm 0.0033$  and  $0.9683 \pm 0.0071$ . MSWD values are between 0.27 and 41.

U–Pb isotopic ratios analyses of the syngenetic Cambrian dolomite Tm-MU-2 forms an isochron that intercept at  $277 \pm 59$  Ma (MSWD = 0.53; n = 80; Fig. 3A), with an initial Pb value of  $0.8664 \pm 0.006$ . The U–Pb data of the hydrothermal dolomite sample Tm-DV-1 shows a lower intercept age of  $37 \pm 75$  Ma (MSWD = 0.27; n = 70; Fig. 3B) and an initial Pb value of  $0.8385 \pm 0.004$  with similar pattern to sample Tm-MU-2. Syngenetic Cretaceous dolomite samples MAM-3 and MAM-7 yielded lower intercept ages of  $137 \pm 14$  Ma (MSWD = 0.63; n = 80) and  $170 \pm 11$  Ma (MSWD = 1.6; n = 80) and an initial Pb value of  $0.7899 \pm 0.005$  and  $0.8427 \pm 0.003$ , respectively (Fig. 3C–D). Sample MU-1 of Cenomanian stratigraphic age yielded an intercept age of  $58 \pm 5$  Ma and an initial Pb value of  $0.8046 \pm 0.004$  (MSWD = 5.4; n = 80; Fig. 3E). The U–Pb age of the sparry sample MU-2 yielded a lower intercept age of  $93 \pm 7$  Ma and an initial Pb value of  $0.8064 \pm 0.004$  (MSWD = 2.4; n = 70; Fig. 3F). Sparry sample KM-1 shows a lower intercept age of  $55 \pm 6$  Ma (MSWD = 1.3; n = 80; Fig. 3G) and an initial Pb value of  $0.7862 \pm 0.033$ . Analyses of the fault related dolomite sample EFN-1 was performed on both the homogeneous sparry dolomitic fragments (n = 30) and on the fine grained enclosing dolomitic cement between fragments (n = 50). All 80 spot analyses in this sample yielded an age of  $51 \pm 1$  Ma (MSWD = 41; n = 80) and an upper intercept value of  $0.9683 \pm 0.007$  (Fig. 3H). The fragments yielded an age of  $74 \pm 3$  Ma (MSWD = 0.99; n = 30) and the cement yielded  $6.5 \pm 1$  Ma (MSWD = 1.5; n = 50), with an initial Pb values of  $0.9140 \pm 0.021$  and  $0.7853 \pm 0.005$ , respectively (Table 1).

Sample	Latitude	Longitude	Petrographic description	Stratigraphic age	U–Pb age	MSWD	Initial Pb value
Tm-MU-2	29.471561	34.591990	Micritic	Cambrian	$277 \pm 59$	0.53	$0.8664 \pm 0.006$
Tm-DV-1	29.778567	34.977663	Hydrothermal	Miocene	$37 \pm 75$	0.27	$0.8385 \pm 0.004$
MAM-3	32.504359	35.141783	Micritic	Cretaceous	$137 \pm 14$	0.63	$0.7899 \pm 0.005$
MAM-7	32.496742	35.150912	Micritic	Cretaceous	$173 \pm 11$	1.6	$0.8427 \pm 0.003$
MU-1	32.671247	35.092221	Sparry	Cretaceous	$58 \pm 5$	5.4	$0.8046 \pm 0.004$
MU-2	32.671516	35.092353	Sparry	Cretaceous	$93 \pm 7$	2.4	$0.8064 \pm 0.004$
KM-1	32.641733	34.981380	Sparry	Cretaceous	$55 \pm 6$	1.3	$0.7862 \pm 0.033$
EFN-1 fragments	31.716563	35.448523	Sparry	Unknown	$74 \pm 3$	0.99	$0.8140 \pm 0.021$
EFN-1 cement	31.716563	35.448523	Sparry	Unknown	$6.5 \pm 1$	1.5	$0.7853 \pm 0.005$

**Table 1: Sample description and stratigraphic age and their corresponding LA results.**



175 **Figure 3:** Tera-Wasserburg concordia plots of studied dolomites: syngenetic Cambrian dolomites (A), hydrothermal dolomites (B), syngenetic Cretaceous dolomites (C–D), early diagenetic dolomites (E–G) and epigenetic dolomite (H). All diagrams have similar axes. Isochrons and uncertainties are presented as black lines and gray areas, respectively. Insets show enlargements of ellipse concentration areas. Uncertainty ellipsoids of spot analysis are plotted in green and represent  $2\sigma$  uncertainties.



## 4 Discussion

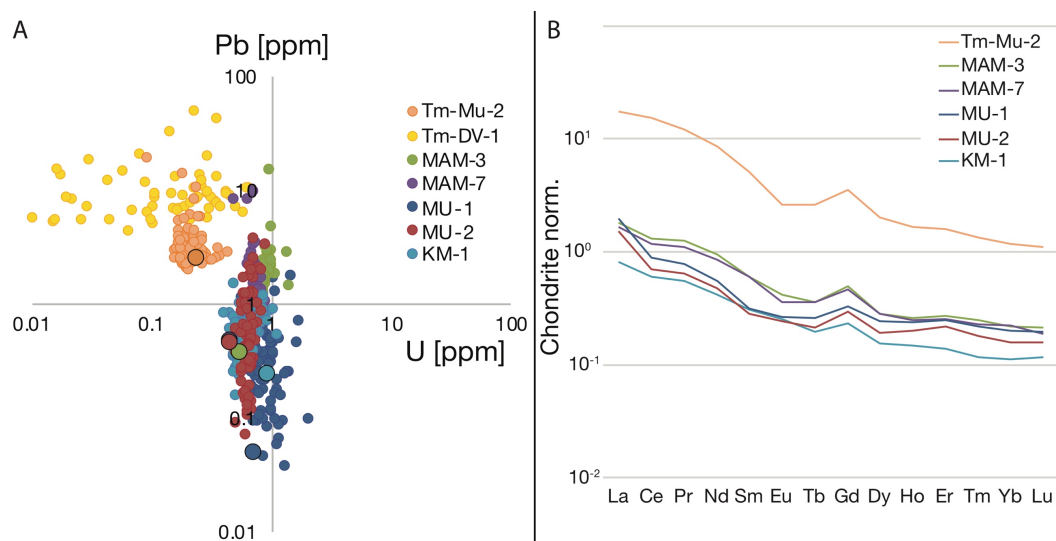
### 180 4.1 Significance of the U–Pb ages

The expected stratigraphic ages of most studied dolomites in this study are inconsistent with their U–Pb ages. To better understand the meaning of the ages obtained we examined the results in relation to the total U and Pb concentration of each spot analysis and of each sample (Fig. 4A) and to the whole-rock REE content (Fig. 4B).

185 Sample Tm-MU-2 was assumed to produce Cambrian age (~520 Ma) but yielded  $277 \pm 59$  Ma, ~180 Ma younger than expected. Data points of this sample are plotted near the initial Pb value, therefore the lower intercept is far projected and poorly constrained (Fig. 3A). U and Pb concentration of this sample are plotted in the upper-left quadrant of figure 4A, with low U (~0.2 ppm) and high Pb contents (~5 ppm). The initial Pb value in this sample ( $0.8664 \pm 0.006$ ) may represent incorporation of radiogenic Pb derived from the surrounding crystalline rocks, as expected for carbonates associated with hydrothermal activity (Stacey and Kramers 1975). This is also supported by the REE signature of sample Tm-MU-2, showing  
190 elevated LREE and depleted HREE (Figure 4B). The REE pattern of this sample is similar to other dolomites in this study, although one order of magnitude higher. Sample Tm-DV-1 display similar pattern to those of sample Tm-MU-2, with data points near the initial Pb intercept (Fig. 3B) due to low U (~0.2 ppm) and high Pb (~5 ppm) contents of individual spot analyses (Fig. 4A). These patterns suggest that dolomitic rocks associated with hydrothermal activity are most likely to contain high initial Pb concentrations and are specified here as dolomites with low-chances for successful dating.

195 The stratigraphic ages of samples MAM-3 and MAM-7 were constrained to 99 and 95.4 Ma (Segev et al., 2002). However, their U–Pb ages yielded a ‘small scale isochron’ (Ring and Gerdes, 2016) with  $137 \pm 14$  and  $170 \pm 11$  Ma intercepts, respectively, 40–70% older than expected. Although the low  $^{207}\text{Pb}/^{206}\text{Pb}$  value of 0.7899 in sample MAM-3 indicates higher incorporation of radiogenic-Pb during dolomitization compared to sample MAM-7 ( $0.8427 \pm 0.003$ ), MAM-7 displays a much larger age offset than MAM-3. In these samples U and Pb contents plot close to 1 ppm U but their total Pb content is up to 20  
200 ppm, forming a cluster above the center of the diagram in figure 4A. We suggest that dolomites with similar U and Pb contents can also be classified as low-chances for successful dating.

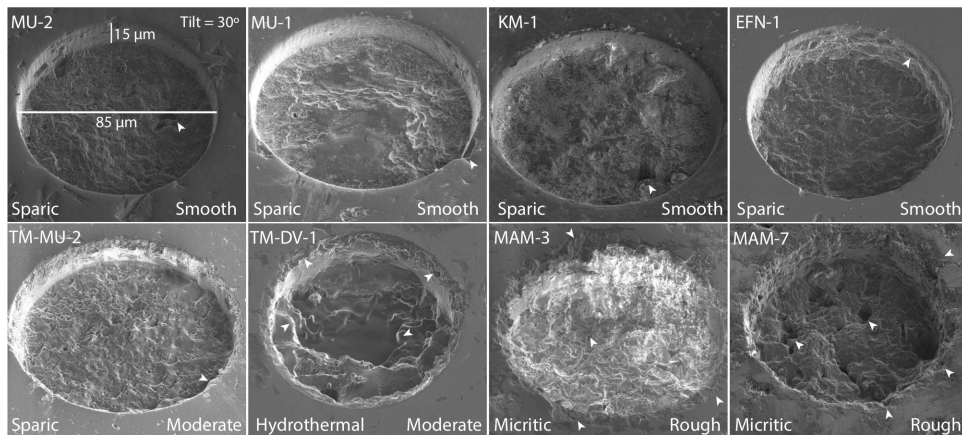
The isochrone of sample MU-1 was expected to produce a Cenomanian age, but its isochrone intercepts at  $58 \pm 5$  Ma, ~40 Ma younger than expected. On the other hand, sample MU-2 was collected several meters away and produced an age of  $93 \pm 7$  Ma. This age is within the uncertainty of the 95–97 Ma Ar–Ar ages of the constraining volcanic layers. The U content of these  
205 samples is between 0.5 to 2 ppm and the Pb content is between <0.1 and 4 ppm, forming a cluster around the center of the diagram in figure 4A. Sample KM-1 is constrained stratigraphically to 99 Ma, however, yielded ~50% younger age than expected. Its isochrone shows similar age pattern to sample MU-1, with a lower intercept age of  $55 \pm 6$  Ma. The REE signature of the above three samples are rather similar, with slightly elevated LREE (Fig. 4B). In sample EFN-1 the spot analyses are clearly a mix of two different phases as the ellipses are arrayed along two isochrons. The results of this sample are further  
210 discussed in more detail.



**Figure 4: (A) U vs. Pb [ppm] of single spots analyses by LA-ICP-MS of studied dolomite samples, together with whole rock U and Pb content of each sample (large circles). (B) Corresponding whole-rock REE patterns normalized to chondrite values.**

#### 215 4.2 Textural characteristics of analyzed dolomites

It was previously suggested that 160% differences in ablation efficiency between the WC-1 calcite standard and micritic dolomite may cause mass fractionation due to uneven mass removal and an age offset of 4–8% (Guillong et al., this issue). To test whether the age discrepancies obtained in our samples are caused by similar effects we imaged the laser craters and examined their morphologies (Fig. 5). Although we did find some imperfections along crater bottom and rims, none of them are sufficient enough to explain the large offsets between expected and obtained dates. Sparry dolomite samples MU-1 and MU-2 are composed of grains larger than 10  $\mu\text{m}$  and their laser craters show a similar morphology, with minor roughness on the bottom of the crater and few imperfections along its rims (Fig. 5). This observation corresponds well with the fact that the stratigraphic and the U–Pb ages of sample MU-2 are consistent, suggesting that this age, as well as the younger age of MU-1 represent actual diagenesis/dolomitization processes. In samples Tm-MU-2 and Tm-DV-1 the bottoms of the craters are rougher, with minor imperfections along the rims (Fig. 5). Therefore, the inconsistent ages of these samples are probably due to their trace-element signature and less to morphological differences in the shape of the crater. On the other hand, the morphology of laser pits in micritic dolomite samples MAM-3 and MAM-7 display multiple imperfections along crater bottom and rims compared to sparry dolomites (Fig. 5). These morphological differences may contribute to some extent to the deviation in their resulted ages. Based on these observations, we conclude that differences in ablation efficiency have little effect on the results and therefore other parameters should be taken into account.

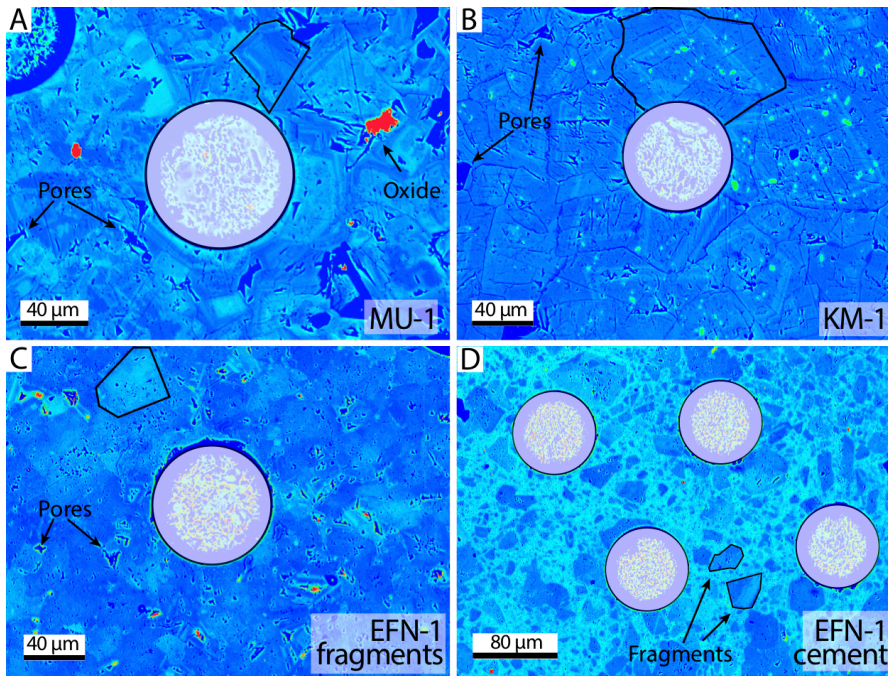


**Figure 5: Ablation craters of studied samples, arranged by crater geometry and bottom roughness, from smooth (MU-2, sparry dolomite), via moderate (TM-MU-2, sparry dolomite), to rough (MAM-7, micritic dolomite). Imperfections along crater rims are marked by white arrows.**

235 Panchromatic back-scattered electron (BSE) images of representative samples show that intracrystalline porosity, distribution of grain size, tiling pattern and type of mineral zoning of dolomite rhombs are much more significant parameters to be considered (Fig. 6). Intracrystalline porosity are usually smaller than spot size of 85  $\mu\text{m}$ , and may include other phases beside dolomite, such as k-feldspar, pyrite, oxides and bituminous minerals (Fig. 6A; Olanipekun and Azmy, 2017). These phases may include detrital contaminations with inherited U–Pb ages, which might lead to mixed ages or ages older than expected.

240 Aside from external impurities, samples with zoned grains that are smaller than the spot size (85  $\mu\text{m}$ ) can also lead to mixed results. Except for sample Tm-DV-1, where dolomite grains reach 200  $\mu\text{m}$ , analyses of a single crystal is difficult. The longest diagonal of dolomite crystals in sample MU-1 is  $\sim 60$   $\mu\text{m}$ . Dolomite cores in this sample are much brighter in BSE compared to their concentric enclosing rims, probably due to higher Mg/Ca ratio and minor concentration of Fe (Fig. 6A; Olanipekun and Azmy, 2017). Dolomite crystals from sample KM-1 display mainly a concentric zoning pattern with a very thin lamina separating the core from the rim. Abundant disseminated calcite inclusions are found in the cores but have relatively homogeneous rim sections (Fig. 6B). Such signature is likely to be associated with the mechanism of epigenetic dolomitization governed by diagenetic replacement of pore fluids and re-precipitation of dolomite (Putnis & Putnis, 2007; Olanipekun & Azmy, 2017). In sample EFN-1, a mixture of different zoning patterns can be seen within the fragments of the breccia: dolomite crystals that lack distinctive core to rim zones and crystals with bright cores and dark rims (Fig. 6C). The cement between the large fragments in this sample contain  $<50$   $\mu\text{m}$  isolated fragments of broken dolomite crystals embedded in homogeneous cement with bright BSE response (Fig. 6D). High-contrast BSE images can help identify chemically zoned dolomite grains, semi-homogenized grains, or mixture of different grains. It is therefore important to notice these textures, as they can lead to age-mixing or averaging of different phases.

250



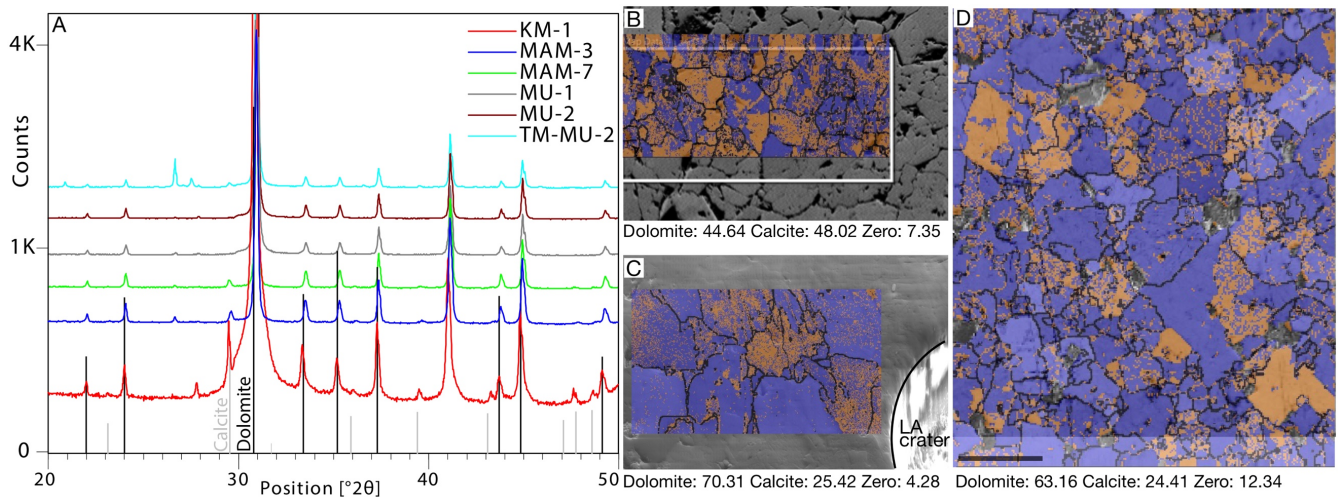
255 **Figure 6:** Panchromatic BSE images of samples MU-1 (A), KM-1 (B) and fragments and cement of sample EFN-1 (C and D, respectively). BSE images are efficient in revealing the grain size of the sample, as well as porosity and additional intracrystalline phases. LA craters are marked by circles of 85 μm diameter. Representative grain boundaries are marked by black polygons.

### 4.3 Early phases and purity of dolomite

260 The fact that dolomite recrystallization may preserve former remnants of calcite is an important aspect to consider in dolomite geochronology. X-ray diffraction (XRD) analyses on rock powders can help resolve this issue and were applied on the studied samples. Two samples were identified as pure dolomite (MU-1 and MU-2), three samples contain minor calcite component (MAM-3, MAM-7 and KM-1) and one sample encompass minor quartz component along with the dolomite (Tm-MU-2; Fig. 7A). As a complimentary, EBSD maps combined with EDS analyses can further distinguish between dolomite and high-Mg calcite. For example, EBSD phase mapping identified ~45% dolomite, ~48% calcite and ~7% zero solution on sample KM-1.

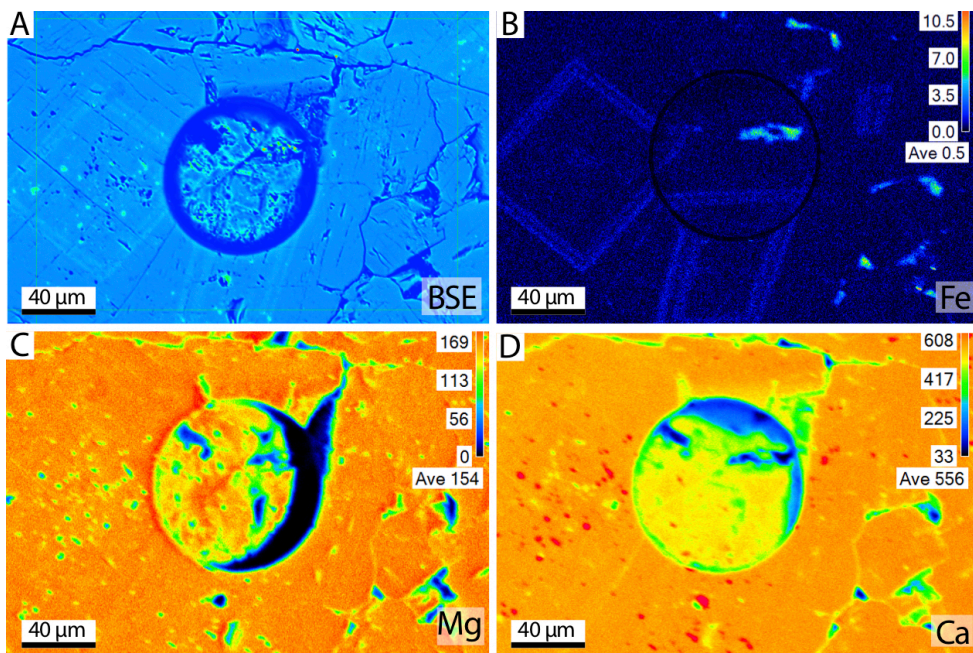
265 In samples MU-1 and MU-2 dolomite is much more abundant, with average of 67% dolomite, 25% calcite and 8% zero solution (Fig. 7B-C). Although calcite phase is relatively abundant in these samples, EDS has identified more than 2:3 Mg/Ca ratio, indicating it is a high-Mg calcite. This support previous interpretations of replacement of calcite by dolomite. The difference between XRD and EBSD analyses imply that pseudosymmetry of high-Mg calcite and dolomite can be unambiguously detected by *in-situ* EBSD phase mapping rather than XRD powder analyses. While the labor-intensive EBSD analysis is more

270 sensitive in detecting calcite replacement than XRD, both methods are recommended for detecting impurities. In this study, less successful samples for dating (e.g. MAM-3 and MAM-7) are with higher calcite percentage relative to successfully dated samples (e.g. MU-1 and MU-2; Fig. 7C-D).



275 **Figure 7: (A) XRD results of the studied samples: all samples are composed entirely of dolomite (peaks above black vertical lines), while some samples show minor calcite contribution (gray vertical lines). Sample Tm-MU-2 shows additional minor peaks of quartz. EBSD phase maps of samples KM-1 (B), MU-1 (C) and MU-2 (D). Dolomite is marked in purple, calcite in orange and zero solutions and grain boundaries are marked in black.**

280 The WDS elemental maps of Fe, Mg and Ca were performed on sample KM-1 and are presented aside BSE image of the same location. The zoning in dolomite grains seen in the BSE are visible in the Fe map (Fig. 8B). Under the resolution of the scan (<0.01 wt.%), Mg and Ca maps do not show chemical zoning, but Ca-rich and Mg-depleted zones can be seen within grain boundaries. These clusters are probably remnants of primary calcite that was later replaced by dolomite (Fig. 8C-D). The WDS mapping could be therefore used for detecting zoning and remnant calcite impurities in the dolomite sample, which in case of late dolomitization event(s), might shift the determined age towards the stratigraphic age of the sample. It is therefore highly recommended to use WDS elemental mapping for samples with sparry grains.

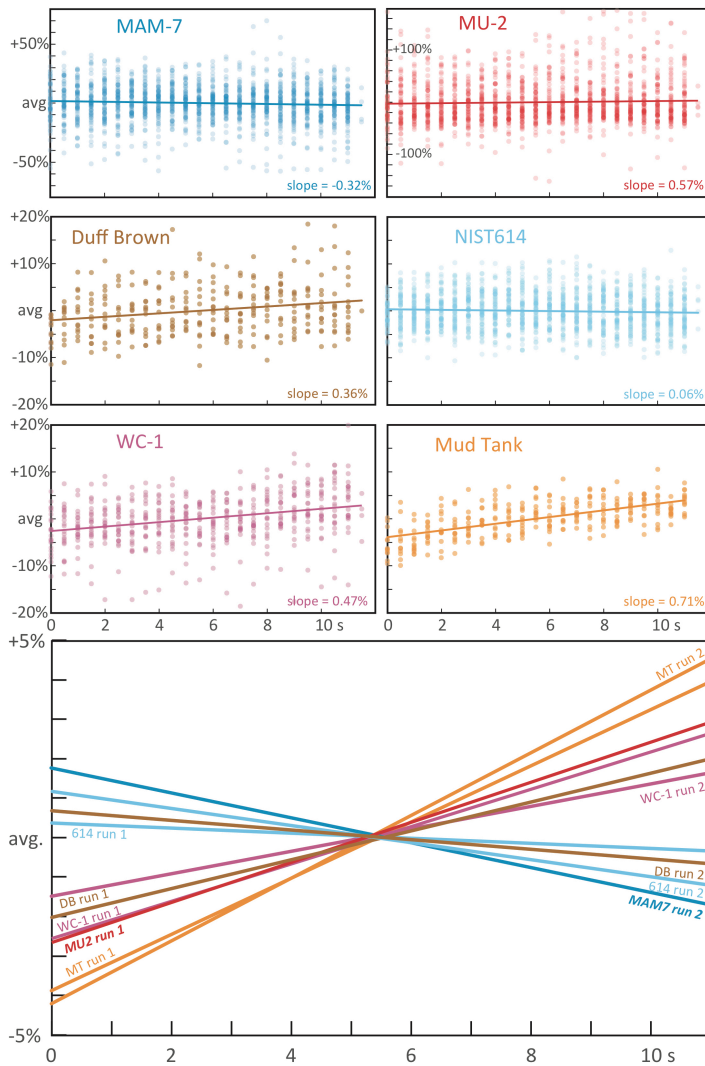


285 **Figure 8: BSE image of LA crater on sample KM-1 (A) compared with WDS elemental maps of the same location (B-D). Zoning in dolomite rhomb is highlighted by Fe elemental map and absent on Mg and Ca. Mg-depleted and Ca-enriched clusters can be seen within the Fe rims of the dolomite crystals.**

#### 4.4 Average down-hole fractionation of RMs and selected unknowns

290 Results from samples MAM-3 and MAM-7 may be the most enigmatic of the sample set, as their ages are considerably older than expected, whereas other samples in this suite yield reasonably acceptable ages. One explanation might be that these samples had a different laser-induced elemental fraction (LIEF) than that of the rest of the sample suite and the calcite reference materials. Although similar in chemistry, these samples have a different texture from other samples, as they are micritic, rather than crystalline. Figure 9 shows stacked integration plots of the down-hole raw  $^{207}\text{Pb}$ -corrected  $^{206}\text{Pb}/^{238}\text{U}$  ratio of unknowns and RMs from each of two sessions in which a sample of either expected age (MU-2; session 1) or unexpected age (MAM-7; session 2) was analyzed. In both sessions, WC-1 (primary calcite RM), Duff Brown Tank (secondary calcite RM), NIST614 glass, and a zircon RM, Mud Tank (Black and Gulson, 1978), yielded consistent down-hole patterns, with zircon being the steepest, NIST614 with a minor negative slope and the calcite RMs in between. The down-hole pattern in MU-2 (run 1) was very similar to that of the primary calcite RM (WC-1) and it is therefore not surprising that it yielded the expected age. MAM-7 (run 2), however, yielded a negative down-hole fractionation pattern, beyond that of any of the standards. Using NIST614 as a primary standard for calcite yields an age that is too old for calcite reference materials, and long-term correction factors typically range between 10–20% for  $^{206}\text{Pb}/^{238}\text{U}$ . This is expected for the calcite vs. NIST glass fractionation patterns; the higher  $^{206}\text{Pb}/^{238}\text{U}$  ratios of the calcite RMs down-hole would yield older ages relative to NIST. Interestingly, however, MAM-7 is older than expected, even though its  $^{206}\text{Pb}/^{238}\text{U}$  ratio becomes smaller down-hole. This may indicate that the difference in  
 305  $^{206}\text{Pb}/^{238}\text{U}$  ratios between measured and expected are caused by plasma-ionization differences between particles of MAM-7

and those of the reference materials and crystalline dolomite. A similar offset is seen in the zircon data; the steeper down-hole fractionation of Mud Tank zircon would expect an age that is older than the reference value. Instead, the recovered age was typically ca. 20% younger than its accepted value. This further indicates the importance of analyzing samples of similar chemical and textural makeup when standardizing unknowns, and that drill rate is only one component of age offset.



310

**Figure 9. Average down-hole fractionation of RMs and selected unknowns. Raw  $^{207}\text{Pb}$ -corrected values (corrected for baseline) are normalized to the average value and a linear fit shows different fractionation trends between glass, zircon, calcite and dolomite. Lower panel showing the difference in average down-hole fractionation between unknown samples and reference materials in two different analytical runs.**

#### 315 4.5 Reevaluation of U–Pb results and interpretation

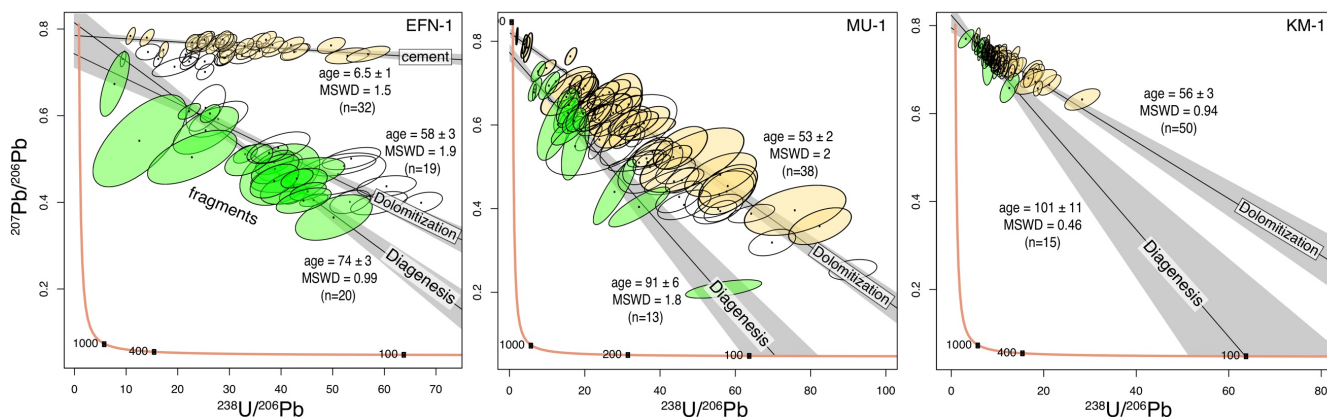
In sample EFN-1 fragments and cement arrange along two different isochrons, forming a wedge with mixed ages between isochrons (Fig. 10). The  $^{207}\text{Pb}/^{206}\text{Pb}$  interception occurs to the left of the concordia curve, resulting in higher initial Pb values

for the isochron with the older age. The stratigraphic age of this faulted unit is considered Cenomanian and cropped out in other regions as limestones rather than dolomite. If dolomitization occurred after brecciation and cementation during a faulting event, a single age for both fragments and the cement is expected. However, fragments and cement yielded two distinct linear trends, indicating that dolomitization of the host rock occurred before brecciation and dolomitization of the cement occurred during or after the faulting event at  $6.5 \pm 1$  Ma (MSWD = 1.5; n = 32). Along the fragments two isochrons of acceptable ages can be identified, at  $74 \pm 3$  and  $58 \pm 3$ . The different ages within the fragments may represent two separated diagenesis and dolomitization events of the rock before faulting, whereas cementation and epigenetic dolomitization of the cement occurred much later, at  $\sim 6$  Ma.

The age of sample MU-2 ( $93 \pm 7$ ) corresponds to the expected stratigraphic age for this unit and probably represent early diagenesis. In sample MU-1, on the other hand, a wedge pattern similar to the fragments in sample EFN-1 can be identified. Out of 80 spot analyses, the older 13 dates form a reasonable isochron with age of  $91 \pm 6$  Ma and MSWD of 1.8. This age falls within the expected stratigraphic age range and probably represents an early diagenetic event. The youngest 38 spot analyses yield an age of  $53 \pm 2$  Ma, with MSWD of 2. The older isochron corresponds to the expected stratigraphic age of this sample, while the younger isochron is  $\sim 30$  Ma younger and may reflect either the time of closure during late-stage dolomitization, or mixed age between stratigraphic age and a much younger dolomitization event (Fig. 10).

Despite its low-resolution isochron, a similar wedge pattern to MU-1 can be seen in sample KM-1, with an older age of  $101 \pm 11$  Ma (MSWD = 0.46; n = 15) and younger age of  $56 \pm 3$  Ma (MSWD = 0.94; n=50). This repeating pattern may represent actual dolomitization event at  $\sim 55$  Ma in these localities. An Early Eocene dolomitization event is, however, not familiar in the local geological record. Hence, the age of 55 Ma may reflect mixed ages of stratigraphic age (early diagenesis) and some younger event(s), similar to sample EFN-1, whereas a young event correspond to the age of 6.5 Ma and association with faulting along the Dead Sea Fault. The use of CL imaging can help to establish how homogeneous the samples are in terms of precipitation conditions. Micritic material are very hard to study by simple microscopy and slight differences in luminescence may suggest superimposed precipitation events. In such cases, early events that left very small remnant material, but with high U content, and a later dominant event with low U-content, can easily produce mixed age that is shifted towards old ages. In such cases, it might be useful to implement the methodology described in Drost et al. (2018), in which 2-D elemental and isotopic ratio maps are used for targeting subdomains in carbonate samples with complex geological histories, such as diagenetic overprinting.





345 **Figure 10: Age interpretation of U–Pb results for samples EFN-1, MU-1 and KM-1.**

## Conclusions

- Accurate U–Pb dating of dolomite by laser ablation inductively coupled plasma mass spectrometry (LA-ICP-MS) contribute to better understanding of dolomitization process.
- 350 • CL and BSE images highlight complexities in the chemical zoning of dolomite at the sub-millimetre scale, including distinct core and rim, semi-homogenized grains, or mixture of different grains. Pre-analysis screening by these methods are recommended.
- Labor-intensive EBSD analysis is more sensitive in detecting calcite replacement than XRD, but both methods are recommended for detecting impurities.
- 355 • A comparison of down-hole fractionation between RMs and unknowns, even those of similar chemical makeup, can be a valuable tool in estimating true uncertainty and inaccuracy of unknowns.
- Textural characteristics such as micritic vs. well-crystalized grains have minor effect on ablation efficiency and can have only minor effect on the resulted ages.
- Differences between obtained and stratigraphic ages suggest for superimposed dolomitization events at the sub-  
360 millimetre scale. A detailed study by CL, EBSD, SEM or 2-D elemental and isotopic ratio maps are recommended in addition to U–Pb analysis.

## Acknowledgments

We thank Dr. Omri Dvir from the Hebrew University, Israel for the help with WDS maps and to Dr. Navot Morag from the Geological Survey of Israel for the help with XRD analyses and interpretation. We thank Dr. Einat Nativ-Roth and Mrs. Roxana Golan from the Ilse Katz Institute for Nanoscale Sciences and Technology, Ben-Gurion University of the Negev for  
365 their help with SEM imaging and EBSD mapping. We also thank Prof. Jon Woodhead for his useful review, which significantly

improved this manuscript. This study was supported by the Israeli Government (under the Geological Survey of Israel, Dead Sea, project 40709).

## References

- 370 Ahm, A. S. C., Bjerrum, C. J., Blättler, C. L., Swart, P. K., & Higgins, J. A.: Quantifying early marine diagenesis in shallow-water carbonate sediments, *Geochimica et Cosmochimica Acta*, 236, 140-159, 2018.
- Beyth, M., Longstaffe, F. J., Ayalon, A., & Matthews, A.: Epigenetic alteration of the Precambrian igneous complex at Mount Timna, southern Israel: Oxygen-isotope studies, *Israel Journal of Earth Sciences*, 46, 1-11, 1997.
- Beyth, M., & Heimann, A.: The youngest igneous event in the crystalline basement of the Arabian-Nubian Shield, Timna  
375 Igneous Complex, *Isr. J. Earth Sci*, 48, 113-120, 1999.
- Beyth, M., Segev, A., Bartov, Y.: Geological Map of Israel. Sheet 25-IV Be'er Ora, Scale 1:50,000, Israel Geological Survey, Jerusalem, 1999.
- Black, L. P. and Gulson BL.: The age of the mud tank carbonatite, strangways range, northern territory. *BMR Journal of Australian Geology & Geophysics*, 3, 227-232, 1978.
- 380 Burisch, M., Walter, B.F., Gerdes, A., Lanz, M. and Markl, G.: Late-stage anhydrite-gypsum-siderite-dolomite-calcite assemblages record the transition from a deep to a shallow hydrothermal system in the Schwarzwald mining district, SW Germany. *Geochimica et Cosmochimica Acta*, 223, 259-278, 2018.
- Drost, K., Chew, D., Petrus, J.A., Scholze, F., Woodhead, J.D., Schneider, J.W. and Harper, D.A.: An Image Mapping Approach to U-Pb LA-ICP-MS Carbonate Dating and Applications to Direct Dating of Carbonate  
385 Sedimentation. *Geochemistry, geophysics, geosystems*, 19, 4631-4648, 2018.
- Eliyahu A., Katzir Y., Ginat H.: A new metallogenic model for sediment-hosted stratiform copper mineralization at the Timna-Faynan southern basin margin, northern Arabian Nubian Shield, in 6<sup>th</sup> Kaplan Workshop: Partitioning of trace elements and stable isotopes from the core to the oceans: thermodynamics and applications, Kibbutz Eilat, Israel, 2017.
- Frisia, S., Borsato, A., & Hellstrom, J.: High spatial resolution investigation of nucleation, growth and early diagenesis in  
390 speleothems as exemplar for sedimentary carbonates, *Earth-Science Reviews*, 178, 68-91, 2018.
- Godeau, N., Deschamps, P., Guihou, A., Leonide, P., Tendil, A., Gerdes, A., Hamelin, B. and Girard, J.P.: U-Pb dating of calcite cement and diagenetic history in microporous carbonate reservoirs: Case of the Urgonian Limestone, France, *Geology*, 46, 247-250, 2018.
- Guillong, M., Wotzlaw, J.F., Looser, N. and Laurent, O.: Evaluating the reliability of U-Pb laser ablation inductively coupled  
395 plasma mass spectrometry (LA-ICP-MS) carbonate geochronology: matrix issues and a potential calcite validation reference material. *Geochronology*, 2, 155-167, 2020.
- Gregg, J. M., & Sibley, D. F.: Epigenetic dolomitization and the origin of xenotopic dolomite texture, *Journal of Sedimentary Research*, 54, 908-931, 1984.

- Hill, C. A., Polyak, V. J., Asmerom, Y., & P. Provencio, P.: Constraints on a Late Cretaceous uplift, denudation, and incision  
400 of the Grand Canyon region, southwestern Colorado Plateau, USA, from U-Pb dating of lacustrine  
limestone, *Tectonics*, 35, 896-906, 2016.
- Hodson, K.R., Crider, J.G. and Huntington, K.W.: Temperature and composition of carbonate cements record early structural  
control on cementation in a nascent deformation band fault zone: Moab Fault, Utah, USA, *Tectonophysics*, 690, 240-252,  
2016.
- 405 Hoff, J. A., Jameson, J., & Hanson, G. N.: Application of Pb isotopes to the absolute timing of regional exposure events in  
carbonate rocks; an example from U-rich dolostones from the Wahoo Formation (Pennsylvanian), Prudhoe Bay,  
Alaska. *Journal of Sedimentary Research*, 65, 225-233, 1995.
- Hu, Y., Cai, C., Liu, D., Pederson, C.L., Jiang, L., Shen, A. and Immenhauser, A.: Formation, diagenesis and  
palaeoenvironmental significance of upper Ediacaran fibrous dolomite cements. *Sedimentology*, 67, 1161-1187, 2020.
- 410 Kohn, B, Weissbrod, T, Chung, L, Farley, K, Bodorkos, S.: Low-temperature thermochronology of francolite: Insights into  
timing of Dead Sea Transform motion, *Terra Nova*, 31: 205-219, 2019.
- Li, Q., Parrish, R. R., Horstwood, M. S. A., & McArthur, J. M.: U–Pb dating of cements in Mesozoic ammonites, *Chemical  
Geology*, 376, 76-83, 2014.
- Ludwig, K. R.: Isoplot/Ex, v. 3.75, *Berkeley Geochronology Center Special Publication*, 5, 75, 2012.
- 415 Machel, H. G.: Concepts and models of dolomitization: a critical reappraisal, *Geological Society, London, Special  
Publications*, 235, 7-63, 2004.
- Mueller, M., Igbokwe, O.A., Walter, B., Pederson, C.L., Riechelmann, S., Richter, D.K., Albert, R., Gerdes, A., Buhl, D.,  
Neuser, R.D. and Bertotti, G.: Testing the preservation potential of early diagenetic dolomites as geochemical archives.  
*Sedimentology*, 67, 849-881, 2020.
- 420 Nuriel, P., Weinberger, R., Kylander-Clark, A.R.C., Hacker, B.R. and Craddock, J.P.: The onset of the Dead Sea transform  
based on calcite age-strain analyses, *Geology*, 45, 587-590, 2017.
- Nuriel, P., Wotzlaw, J., Ovtcharova, M., Vaks, A., Stremtan, C., Šala, M., Roberts, N., and Kylander-Clark, A.R.C.: The use  
of ASH-15 flowstone as matrix-matched standard for laser-ablation geochronology of calcite, *Geochronology*, 2021.
- Olanipekun, B. J., & Azmy, K.: *In situ* characterization of dolomite crystals: Evaluation of dolomitization process and its effect  
425 on zoning, *Sedimentology*, 64, 1708-1730, 2017.
- Ovchinnikova, G.V., Kuznetsov, A.B., Melezhik, V.A., Gorokhov, I.M., Vasil'eva, I.M. and Gorokhovskii, B.M.: Pb–Pb age  
of Jatulian carbonate rocks: the Tulomozero Formation of southeast Karelia. *Stratigraphy and Geological Correlation*, 15,  
359-372, 2007.
- Parnes, A.: Late Lower Cambrian trilobites from the Timna area and Har Amram (southern Negev, Israel), *Israel Journal of  
430 Earth Sciences*, 20, 179-205, 1971.
- Parrish, R.R., Parrish, C.M. and Lasalle, S.: Vein calcite dating reveals Pyrenean orogen as cause of Paleogene deformation in  
southern England, *Journal of the Geological Society*, 175, 425-442, 2018.

- Paton, C., Woodhead, J. D., Hellstrom, J. C., Hergt, J. M., Greig, A., and Maas, R.: Improved laser ablation U-Pb zircon geochronology through robust downhole fractionation correction, *Geochemistry Geophysics Geosystems*, 11, 2010.
- 435 Polyak, V.J., Provencio, P.P. and Asmerom, Y.: U–Pb dating of speleogenetic dolomite: A new sulfuric acid speleogenesis chronometer. *International Journal of Speleology*, 45, 2016.
- Putnis, A. and Putnis, C. V.: The mechanism of re- equilibration of solids in the presence of a fluid phase, *Journal of Solid-State Chem.*, 180, 1783-1786, 2007.
- Ring, U. and Gerdes, A.: Kinematics of the Alpenrhein-Bodensee graben system in the Central Alps: Oligocene/Miocene  
440 transtension due to formation of the Western Alps arc, *Tectonics*, 35, 1367-1391, 2016.
- Roberts, N.M.W. and Walker, R.J.: U-Pb geochronology of calcite-mineralized faults: Absolute timing of rift-related fault events on the northeast Atlantic margin, *Geology*, 44, 531-534, 2016.
- Roberts, N. M. W., Rasbury, E. T., Parrish, R. R., Smith, C. J., Horstwood, M. S. A., and Condon, D. J.: A calcite reference material for LA- ICP-MS U–Pb geochronology, *Geochemistry Geophysics Geosystems*, 18, 2807-2814, 2017.
- 445 Roberts, N.M., Drost, K., Horstwood, M.S., Condon, D.J., Chew, D., Drake, H., Milodowski, A.E., McLean, N.M., Smye, A.J., Walker, R.J. and Haslam, R.: Laser ablation inductively coupled plasma mass spectrometry (LA-ICP-MS) U-Pb carbonate geochronology: strategies, progress, and limitations, *Geochronology discuss*, 2, 33-61, 2020.
- Salih, N., Mansurbeg, H., Kolo, K., Gerdes, A. and Pr eat, A.: *In situ* U–Pb dating of hydrothermal diagenesis in tectonically controlled fracturing in the Upper Cretaceous Bekhme Formation, Kurdistan Region-Iraq. *International Geology Review*,  
450 1-19, 2019.
- Sass, E.: Microphotometric determination of preferred orientation in undeformed dolomites, *Science*, 165, 802-803, 1969.
- Sass, E., and Bein, A.: Platform carbonates and reefs in the Judean Hills, Carmel and Galilee, *in* Proceedings Tenth International Congress on Sedimentology. International Association of sedimentologists, Jerusalem, Field guidebook, 239-274, 1978.
- 455 Sass, E., Dekel, A., Sneh, A.: Geological Map of Israel. Sheet 5-II Umm El Fahm, Scale 1:50,000. Israel Geological Survey, Jerusalem, 2013.
- Schmitz, M.D. and Schoene, B.: Derivation of isotope ratios, errors, and error correlations for U–Pb geochronology using  $^{205}\text{Pb}$ - $^{235}\text{U}$ -( $^{233}\text{U}$ )-spiked isotope dilution thermal ionization mass spectrometric data. *Geochemistry, Geophysics, Geosystems*, 2007.
- 460 Segev, A., Sass, E., Ron, H., Lang, B., Kolodny, Y., and McWilliams, M.: Stratigraphic, geochronologic, and paleomagnetic constraints on Late Cretaceous volcanism in northern Israel, *Israel Journal of Earth Sciences*, 51, 2002.
- Segev, A., Sass, E.: Geological Map of Israel. Sheet 3- III Atlit, Scale 1:50,000. Israel Geological Survey, Jerusalem, 2009.
- Segev, A.:  $^{40}\text{Ar}/^{39}\text{Ar}$  and K–Ar geochronology of Berriasian–Hauterivian and Cenomanian tectonomagmatic events in northern Israel: implications for regional stratigraphy, *Cretaceous Research*, 30, 810-828, 2009.
- 465 Segev, A.: Major unconformities in the stratigraphic succession in the Timna-Eilat region and their relation to copper and manganese mineralization cycles, *Isr. Geol. Soc. Field Trips Guide. Elat*, 154-188, 2016.

- Sneh, A., Avni Y.: Geological Map of Israel. Sheet 11- II Jerusalem, Scale 1:50,000. Israel Geological Survey, Jerusalem, 2016.
- 470 Stacey, J.T. and Kramers, J.: Approximation of terrestrial lead isotope evolution by a two-stage model. *Earth and planetary science letters*, 26, 207-221, 1975.
- Tera, F., and Wasserburg, G. J.: U-Th-Pb systematics in three Apollo 14 basalts and the problem of initial Pb in lunar rocks, *Earth and Planetary Science Letters*, 14, 281-304, 1972.
- Vermeesch, P.: IsoplotR: A free and open toolbox for geochronology, *Geoscience Frontiers*, 9, 1479-1493, 2018.
- Warren, J.: Dolomite: occurrence, evolution and economically important associations, *Earth-Science Reviews*, 52, 1-81, 2000.
- 475 Winter, B.L. and Johnson, C.M.: U-Pb dating of a carbonate subaerial exposure event. *Earth and Planetary Science Letters*, 131(3-4), pp.177-187, 1995.