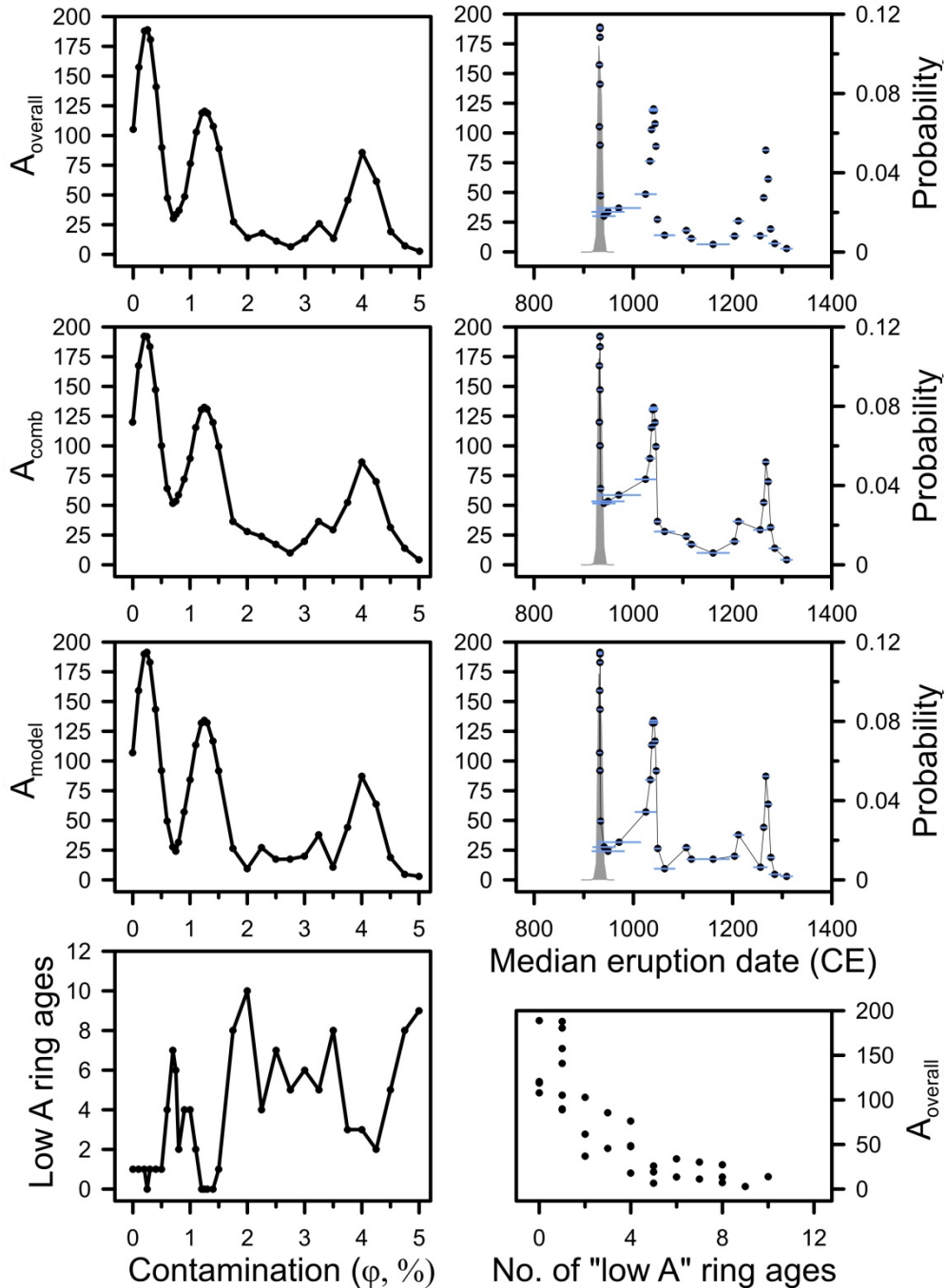
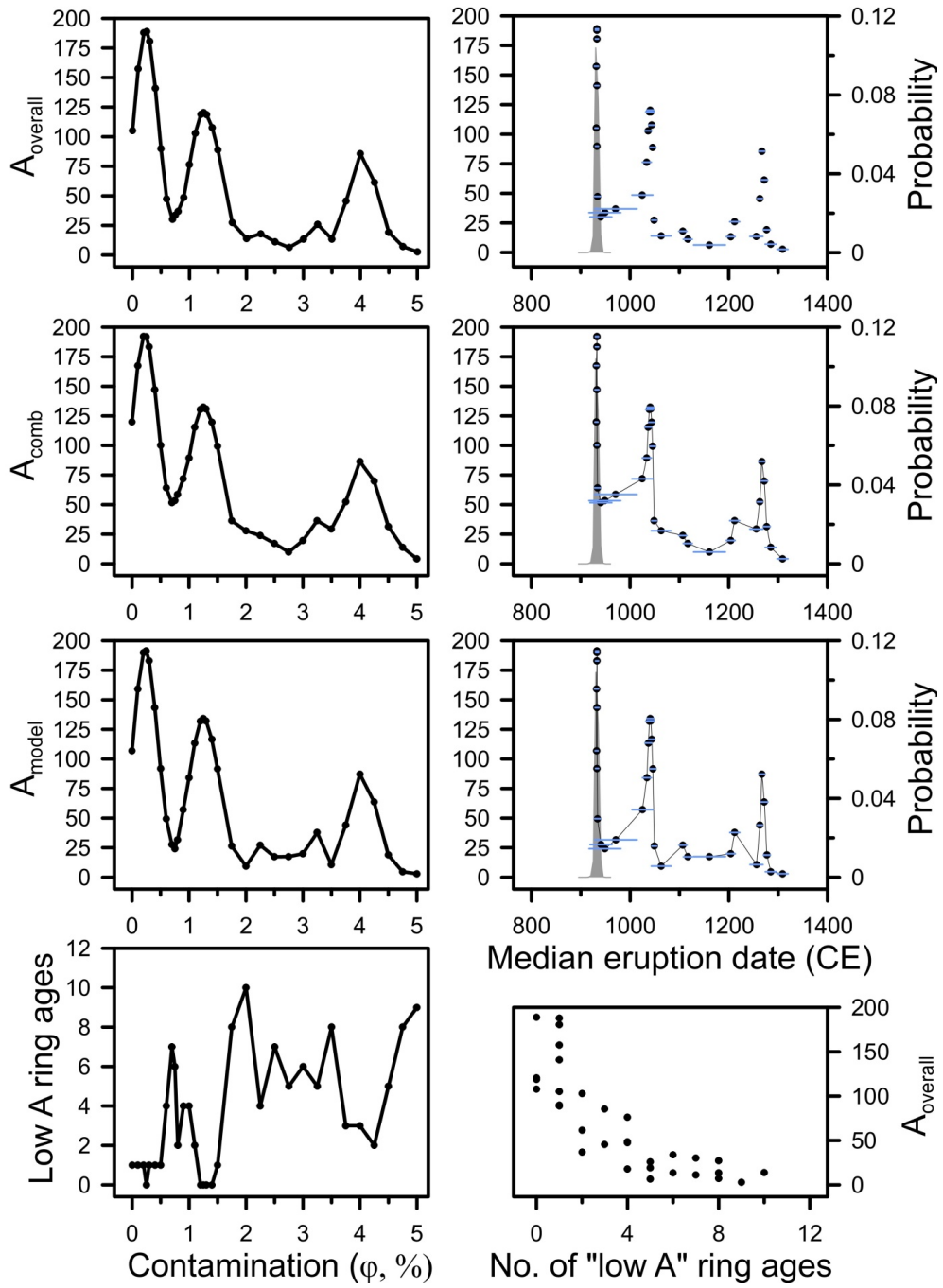


Holdaway *et al.* Evidence for old carbon contamination in Changbaishan wiggle matches

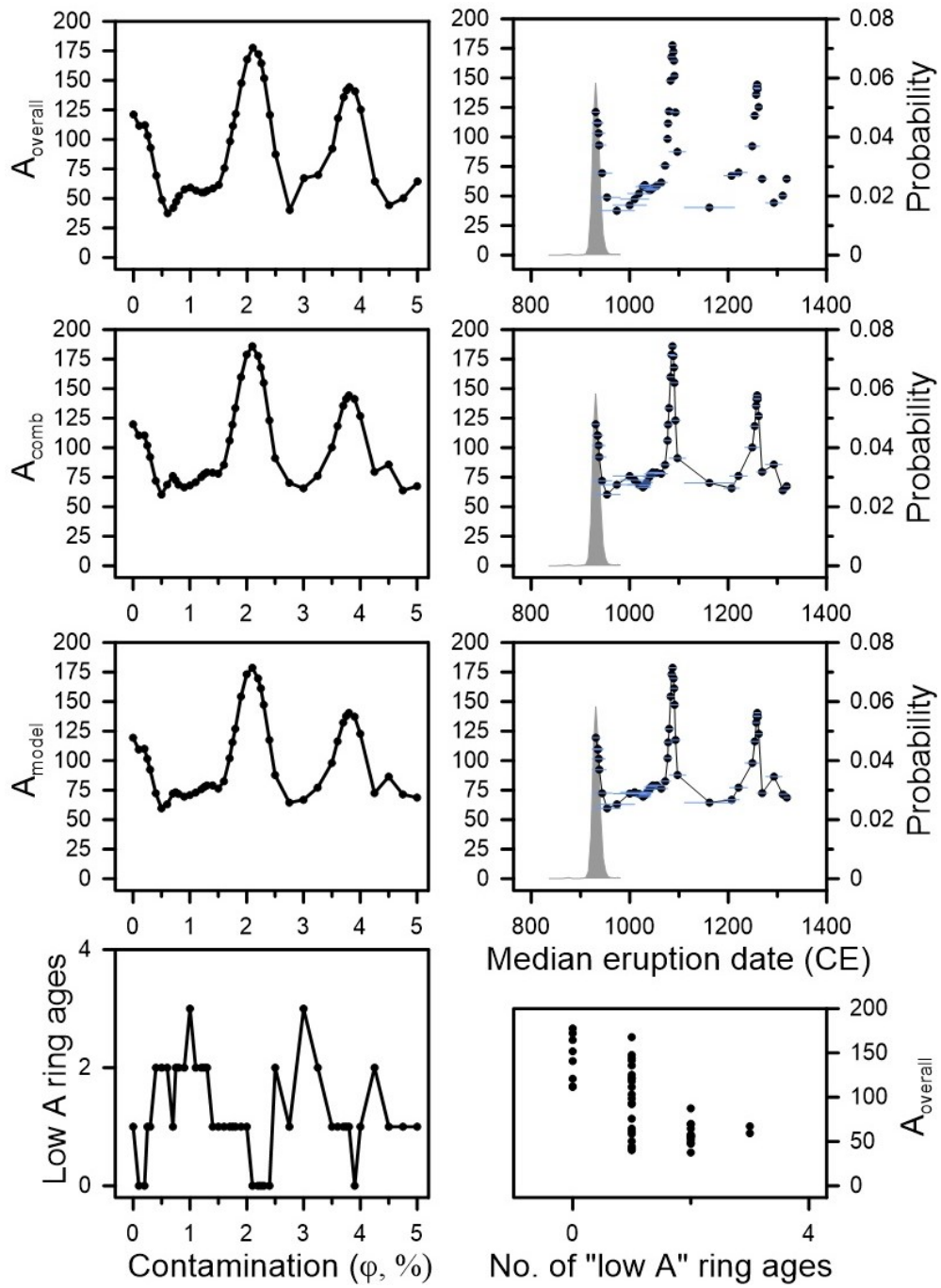
Supplementary Figures 1-8



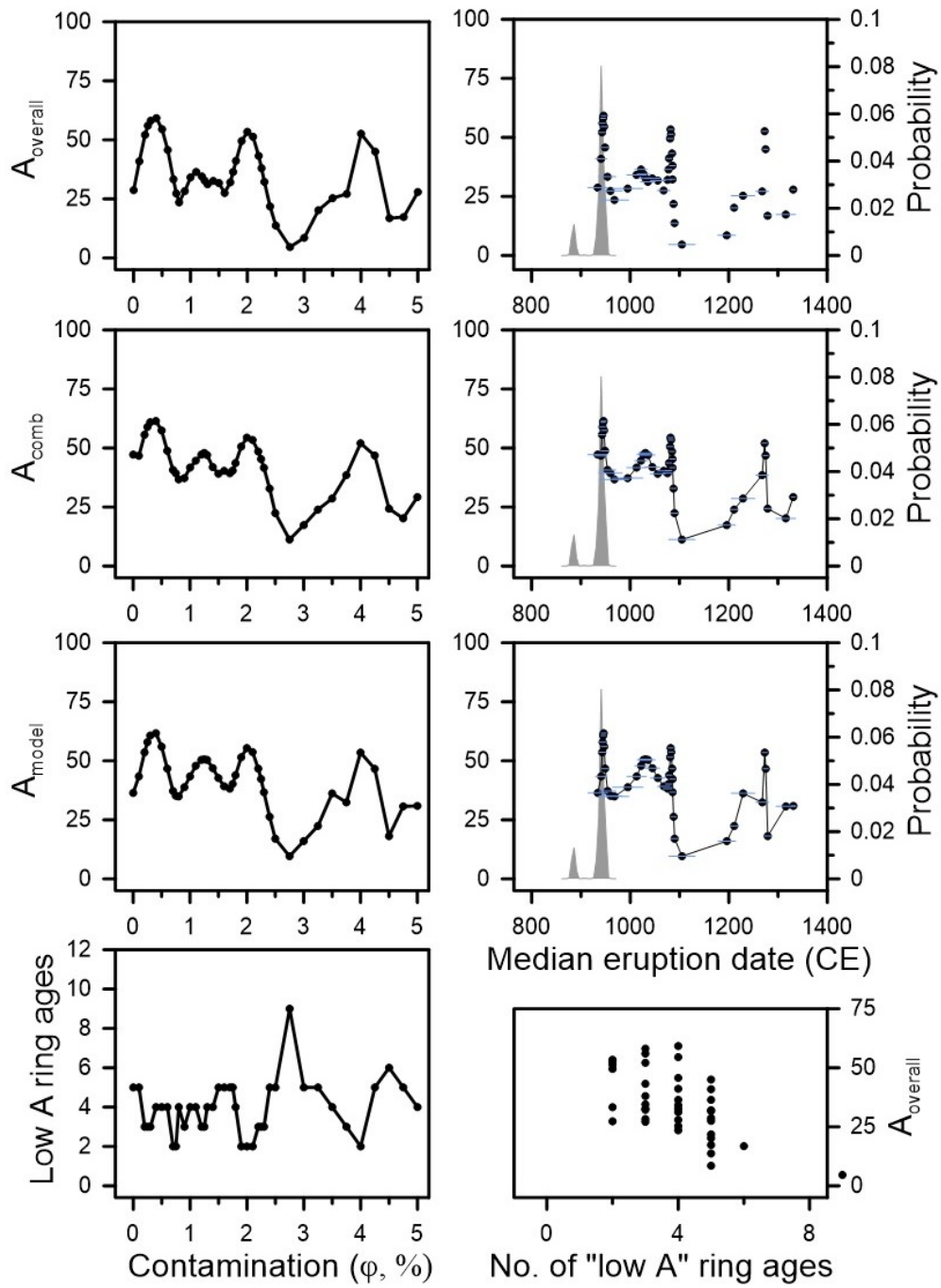
Supplementary Figure 1: Effects of allowing $\phi \neq 0$ values for Tree YaA in Yin et al. (2012), using the IntCal20 calibration curve. Strength of wiggle match fits (by agreement indices), corresponding eruption dates (with probability distributions for $\phi = 0.05$ and highest agreement index peaks, and number of "low A" ages (not removed from the age series for these analyses), for $\phi = 0 - 5\%$.



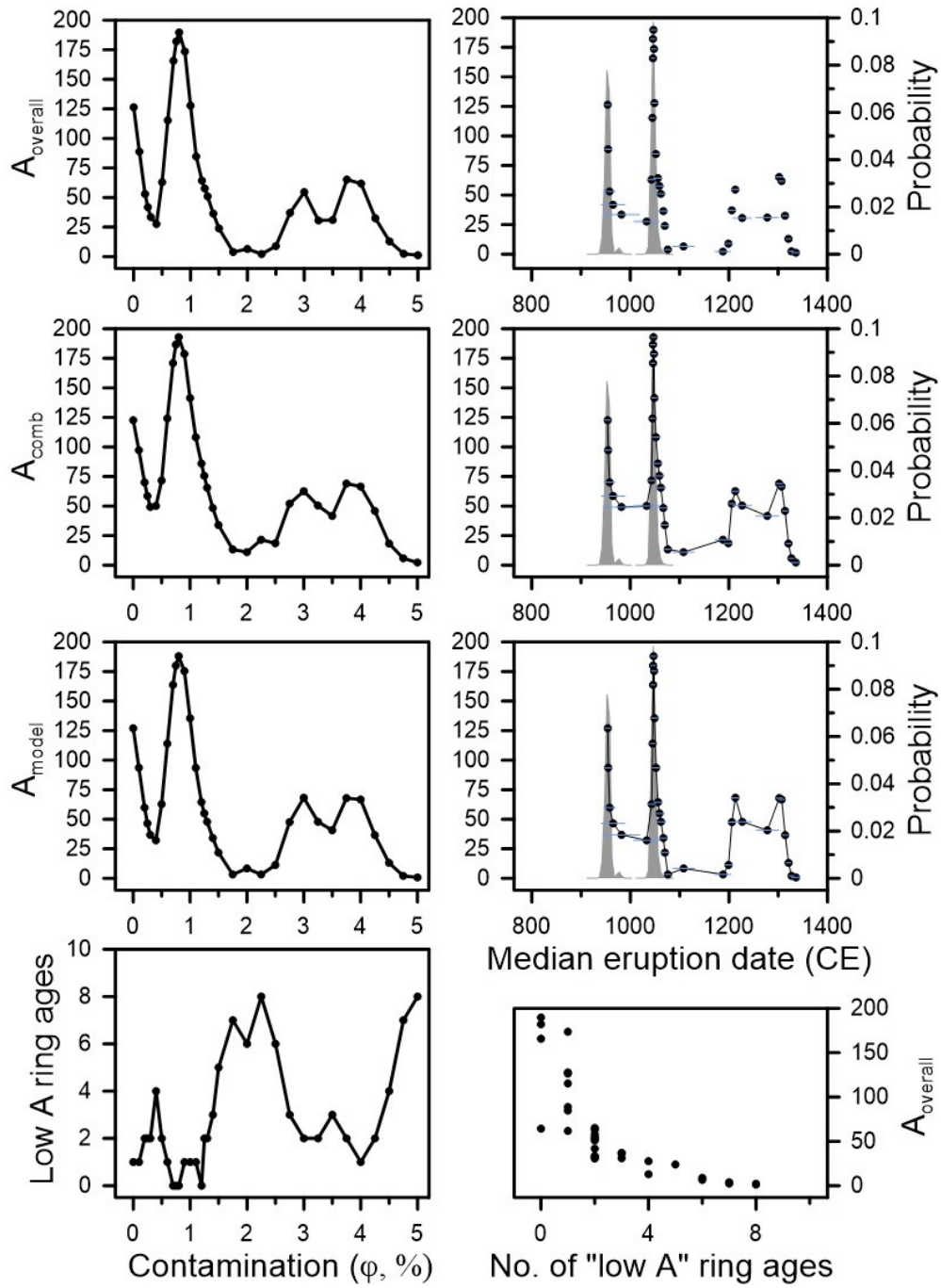
Supplementary Figure 2: As in Supplementary Fig. 1, for Tree YAB in Yin et al. (2012).



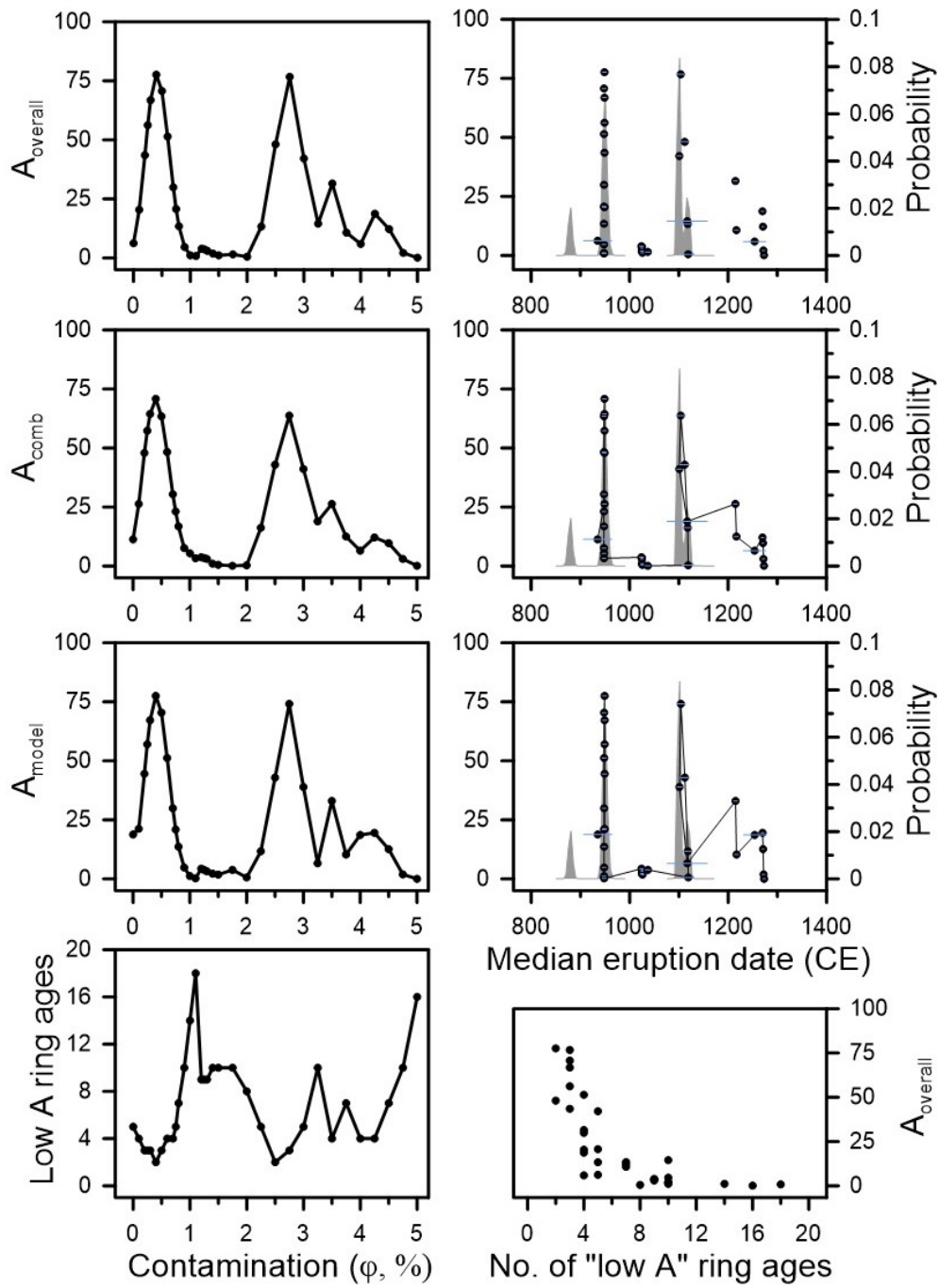
Supplementary Figure 3: As in Supplementary Fig. 1, for Tree DFHA in Yin et al. (2012).



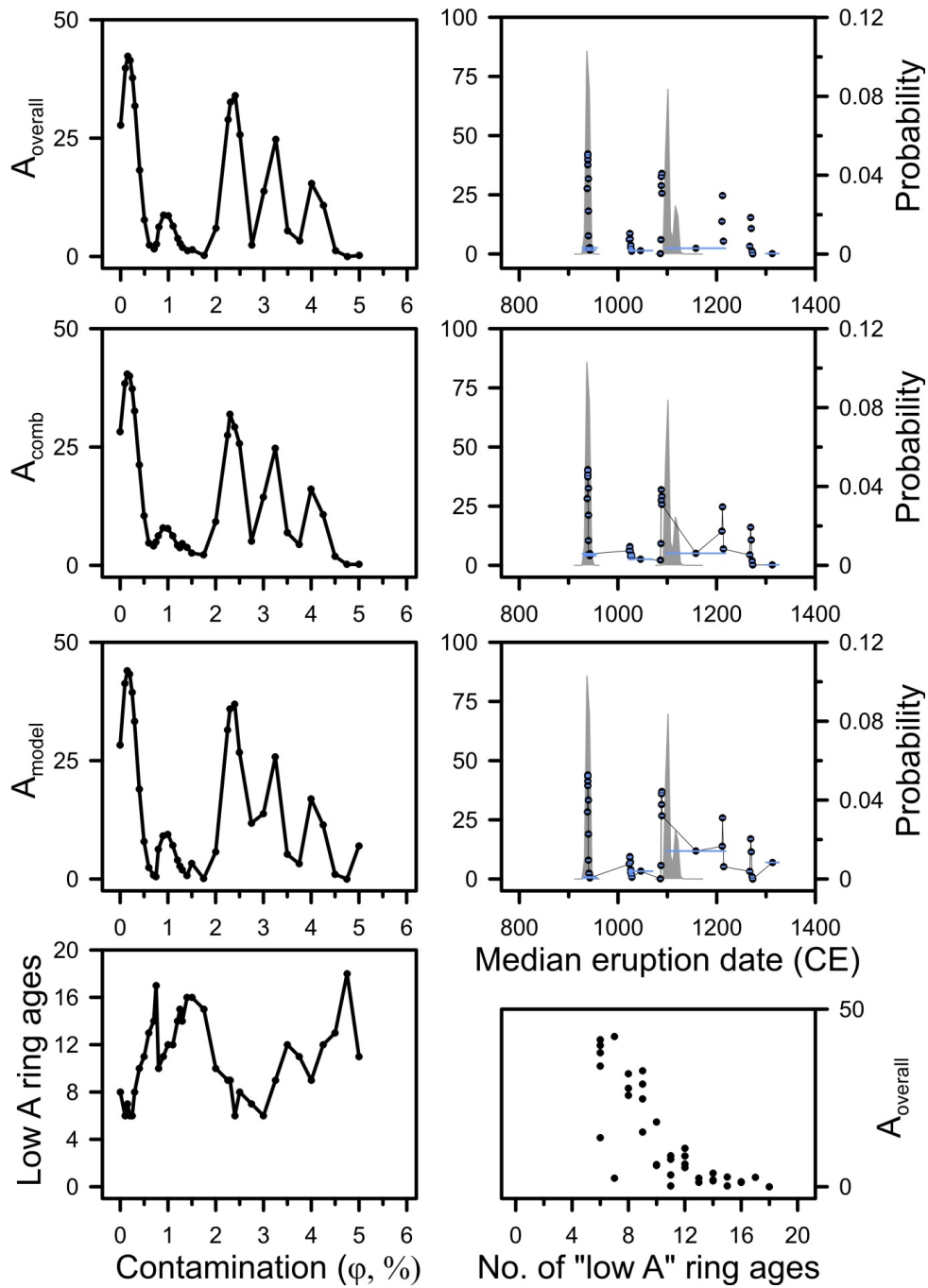
Supplementary Figure 4: As in Supplementary Fig. 1, for Tree DFHB1 in Yin et al. (2012).



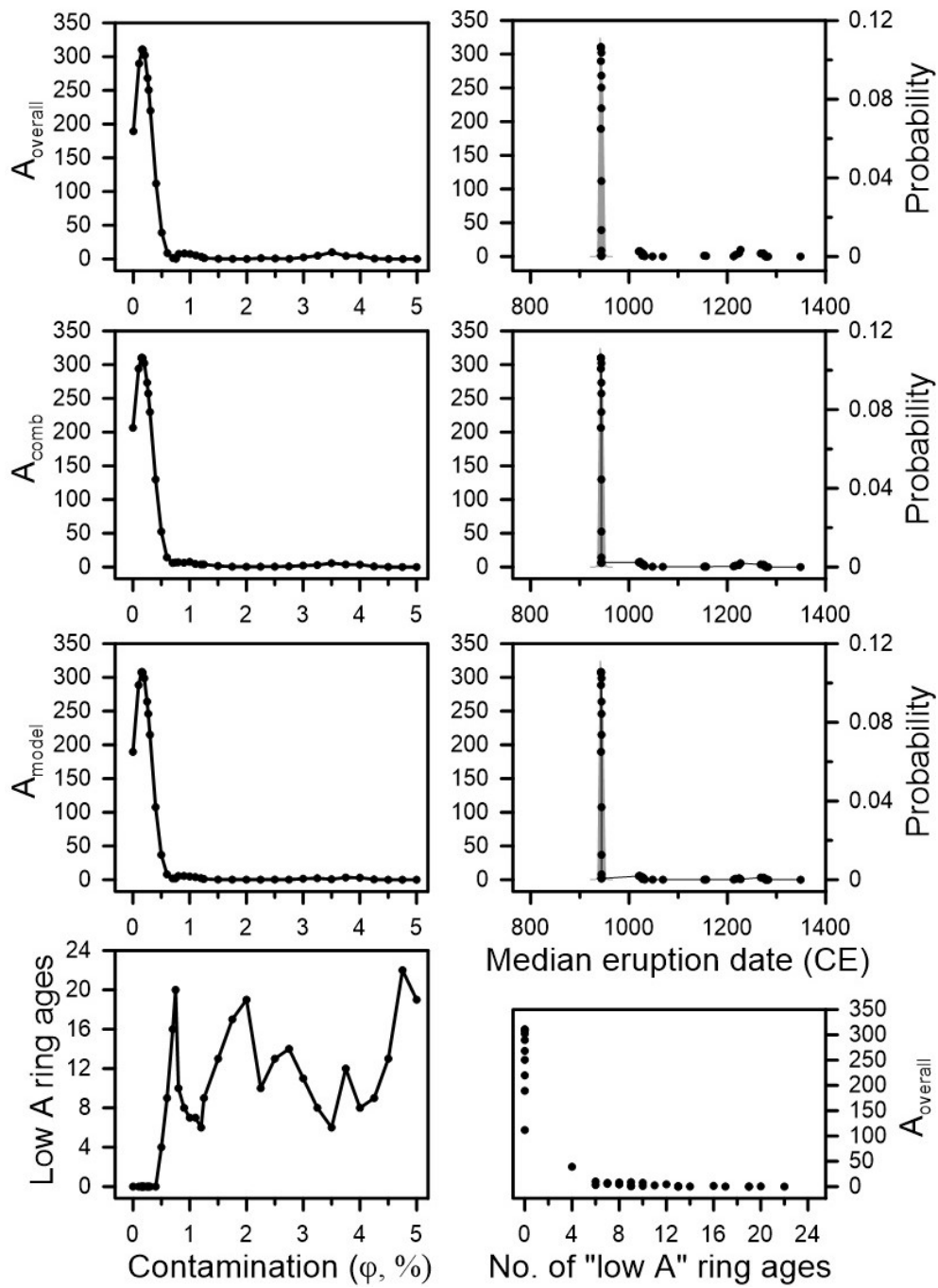
Supplementary Figure 5: As in Supplementary Fig. 1, for Tree A in Yatsuzuka et al. (2010).



Supplementary Figure 6: As in Supplementary Fig. 1, for Tree B in Yatsuzuka et al. (2010).



Supplementary Figure 7: As in Supplementary Fig. 1, for WM Tree in Nakamura et al. (2007).



Supplementary Figure 8: As in Supplementary Fig. 1, for Tree XSH in Xu et al. (2013).