

Combined linear regression and Monte Carlo approach to modelling exposure age depth profiles

Yiran Wang^{1,2}, Michael E. Oskin¹

¹Department of Earth and Planetary Sciences, UC Davis, Davis, 95616, USA

5 ²Earth Observatory of Singapore, Nanyang Technological University, 639798, Singapore

Correspondence to: Yiran Wang (yrwwang@ucdavis.edu)

Abstract. We introduce a set of methods for analyzing cosmogenic-nuclide depth profiles that formally integrates denudation and muogenic production, while retaining the advantages of linear inversion. For surfaces with denudation, we present solutions for both denudation rate and total denudation depth, each with their own advantages. By combining linear inversion with Monte Carlo simulation of error propagation, our method jointly assesses uncertainty arising from measurement error and denudation constraints. Using simulated depth profiles and natural-example depth profile data sets from the Beida River, northwest China and Lees Ferry, Arizona, we show that our methods robustly produce accurate age and inheritance estimations for surfaces under varying circumstances. The denudation-depth approach can theoretically produce reasonably accurate age estimates even when total denudation reaches five-times the nucleon attenuation length. The denudation-rate approach, on the other hand, has the advantage of allowing direct exploration of trade-offs between exposure age and denudation rate. Out of all the factors, lack of precise constraints for denudation rate or depth tends to be the largest contributor of age uncertainty, while negligible error results from our approximation of muogenic production using the denudation-depth approach.

1 Introduction

In-situ terrestrial cosmogenic nuclide (TCN) dating, especially with ¹⁰Be, is a widely applied tool to estimate landform ages (e.g., Granger et al., 2013). These dates are affected by landscape processes that either remove or add TCNs, lending uncertainty that may be difficult to assess without additional information. Ages of landforms constructed from sediments, such as a stream terrace, may be affected by TCNs acquired by the sediments prior to deposition, termed inheritance, leading to erroneously older dates (Brocard et al., 2003; Hancock et al., 1999; Repka et al., 1997). Conversely, even a low rate of denudation of a landform after its formation will bias surface-exposure ages younger (Lal, 1991). Under the condition of no denudation, solving a depth-profile of TCN concentrations via linear inversion – a technique first developed by Anderson et al. (1996) – provides a robust approach for estimating surface age and inheritance from a landform comprised of sediments. However, this method suffers from the deficit of not incorporating denudation or muogenic production process, and has been succeeded by forward-modelling approaches (e.g. Hidy et al., 2010). Despite its deficits, however, linear regression retains advantages as a robust and straightforward approach to invert for exposure age. Herein we revisit the application of linear

30 regression for TCN depth profiles with an updated approach, building upon the simplicity of the original technique, but expanding its application to surfaces with independently constrained denudation histories, and increasing the accuracy of the age and inheritance results by taking muogenic production into account.

As an inverse approach, our least-squares linear regression directly solves for a best-fit age and inheritance, while treating the denudation rate or denudation depth as a model input, rather than an output of the model. It may be used with Monte Carlo
35 sampling to explore the full distribution of possible ages and inheritance from the variation of input parameters. As an inverse approach, linear regression returns a best estimate without requiring extensive calculations and repetitions. This is useful to derive an exposure age directly, or as a starting point for forward models (e.g. Hidy et al., 2010; Laloy et al., 2017; Marrero et al., 2016). In the latter case, linear inversion may help researchers tune the boundary values for the forward models to get better simulation results.

40 In this paper, we present a general inversion which incorporates muogenic process, and two derivative approaches for age inversion at sites with constant denudation rate. The first derivative approach directly applies a constant denudation rate but requires simplification by omitting muogenic production. This approach provides a useful tool to explore the trade-offs between denudation rate and exposure age but introduces systematic errors as denudation rate increases due to the exclusion of muogenic production. The second derivative approach introduces a solution for a constant denudation depth with a Taylor-
45 series approximation for the muogenic production terms. With this approximation, linear regression produces robust age estimates even for surfaces with a large amount of denudation. To show the application of these techniques, we present applications to pseudo-realistic depth profiles under various scenarios. We also apply our approach to two previously published example sample sites, one from the Beida River in western China from our own work (Wang et al., 2020), and one from the Lees Ferry site on the Colorado River from Hidy et al. (2010), to demonstrate model performance for realistic cases. These
50 examples show that our revised linear-regression approach is robust and can be applied to most exposure dating scenarios.

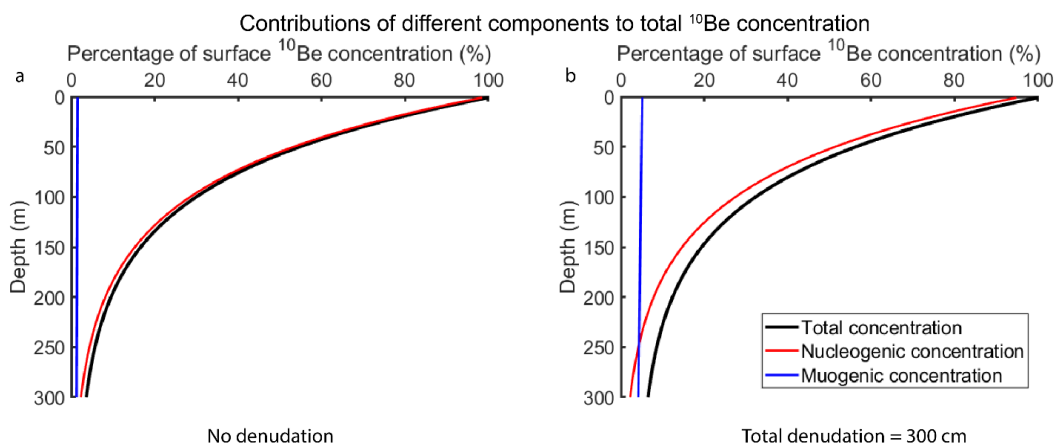


Figure 1 Depth-concentration profiles with different contributing components for a hypothetical surface. The profiles are calculated based on a sea level high latitude production rate (nucleogenic production rate of 4.11 atoms/g, Martin et al., 2017; muogenic production rate of 0.0735 atoms/g, Balco, 2017). All the concentrations are normalized to a percentage of the total surface concentration. a. Surface with no denudation. b. Surface with steady denudation rate; denudation depth equal to 300 cm.
55

2 Methods

2.1 General inversion

Under conditions of constant production rate and constant denudation rate, a surface that was exposed at time t would have a concentration of a cosmogenic nuclide (N_z) as (Balco et al., 2008; Braucher et al., 2009; Lal, 1991; Lal and Arnold, 1985):

$$60 \quad N_z(t) = P_{n,0} e^{-\frac{\rho z}{\Lambda_n}} \left(\frac{1 - e^{-\left(\frac{\rho \varepsilon}{\Lambda_n} + \lambda\right)t}}{\frac{\rho \varepsilon}{\Lambda_n} + \lambda} \right) + P_{m_1,0} e^{-\frac{\rho z}{\Lambda_{m1}}} \left(\frac{1 - e^{-\left(\frac{\rho \varepsilon}{\Lambda_{m1}} + \lambda\right)t}}{\frac{\rho \varepsilon}{\Lambda_{m1}} + \lambda} \right) + P_{m_2,0} e^{-\frac{\rho z}{\Lambda_{m2}}} \left(\frac{1 - e^{-\left(\frac{\rho \varepsilon}{\Lambda_{m2}} + \lambda\right)t}}{\frac{\rho \varepsilon}{\Lambda_{m2}} + \lambda} \right) \quad (1)$$

where $P_{n,0}$, $P_{m_1,0}$, and $P_{m_2,0}$ are the surface production rate induced by nucleons, negative muons, and fast muons; Λ_n , Λ_{m1} , and Λ_{m2} are the attenuation scale lengths (g/cm^2) of the nucleons and muons (negative and fast), respectively; z is the depth beneath the target surface; λ is the decay constant, and ε is a constant denudation rate, if applicable. For our purposes, we model ages using ^{10}Be , with a half-life of 1.39 Myr (Chmeleff et al., 2010; Korschinek et al., 2010), due to its wide
75 applicability to quartz-bearing sediments (Cockburn and Summerfield, 2004; Granger et al., 2013; Rixhon et al., 2017).

Based on eq. 1, the production of cosmogenic nuclides may be simplified into two major components: the production rate at specific depth (P_z), and the effective exposure age of the site (T_e), which is the time that is required to accumulate concentration N_z at production rate P_z without erosion and radioactive decay. Therefore eq. 1 may be rearranged into:

$$N_z(t) = \sum_i P_{zi} T_{ei} \quad (2a)$$

$$70 \quad \text{where } P_{zi} = P_{i,0} e^{-\frac{\rho z}{\Lambda_i}}, T_{ei} = \left(\frac{1 - e^{-\left(\frac{\rho \varepsilon}{\Lambda_i} + \lambda\right)t}}{\frac{\rho \varepsilon}{\Lambda_i} + \lambda} \right), i = n, m_1, m_2 \quad (2b)$$

The ^{10}Be concentration measured from a suite of samples (Fig. 1), C , has two components: the in-situ produced concentration, N_z , and the inherited concentration, C_{inh} ,

$$C = \sum_i P_{zi} T_{ei} + C_{inh}. \quad (3)$$

Though ^{10}Be concentration (C) is exponential to the burial depth, based on equation 2 and 3, when there is no denudation ($\varepsilon \approx$
75 0), $T_{en} = T_{em1} = T_{em2}$, and therefore eq. 3 can be rearranged as:

$$C = T_e \sum_i P_{zi} + C_{inh}. \quad (4a)$$

$$\text{where } T_e = \left(\frac{1 - e^{-\lambda t}}{\lambda} \right) \quad (4b)$$

This equation is an update to the linear regression approach first proposed by Anderson et al. (1996) that accounts for both nucleon and muon production, as well as radioactive decay. For the case of no denudation, TCN concentration is linear to the
80 sum of production rates via all pathways ($\sum_i P_{zi}$), and T_e and C_{inh} are the slope and intercept of this linear relationship respectively. Therefore, similar to the approach proposed by Anderson et al. (1996), we can apply least-squares linear regression to find the slope (T_e) and intercept (C_{inh}) of the best fit line to the concentration vs. production rate data of the depth profile. The exposure age, factoring in decay, may be calculated directly by rearranging eq. 4b:

$$t = -\frac{\ln(1 - T_e \lambda)}{\lambda} \quad (5)$$

85 2.2 Inversion with denudation rate

For sites with constant denudation rate, ε , the effective age for each pathway (nucleons or muons) would be different, due to their different attenuation lengths. But an approximation may be made by omitting the muogenic production, on the basis that muogenic production only makes up a very small fraction of the total surface production (Braucher et al., 2003, 2011, 2013; Heisinger et al., 2002b, 2002a; Balco 2008, 2017), and eq. 3 may be further simplified to

$$90 \quad C = P_{zn}T_{en} + C_{inh}, \quad (6)$$

Using eq. 6, a linear Least-Squares regression can be applied to find the best-fit T_{en} and C_{inh} , which leads to the estimated exposure age

$$t = -\frac{\ln(1-T_{en}B)}{B} \quad (7a) \quad \text{where } B = \frac{\rho\varepsilon}{\lambda_n} + \lambda \quad (7b)$$

This solution illustrates the utility of separating the age model for finding T_{en} from the effect of denudation rate, contained within the parameter B . Though the error introduced to omitting muogenic production grows as the denudation rate increases, this approach (eq. 7) provides a useful tool to examine the relationship between exposure age and denudation rate.

2.3 Inversion with denudation depth

For many practical cases, it may be more straightforward to estimate total denudation depth (D) from field evidence such as through soil-profile analysis, rather than a denudation rate (e.g. Ebert et al., 2012; Hidy et al, 2010; Ruzsokiczay-Rüdiger et al., 2016). With denudation depth, the effective age of each pathway may be rewritten as

$$T_{ei} = \left(\frac{1 - e^{-\left(\frac{\rho D}{\lambda_i} + \lambda t\right)}}{\frac{\rho D}{\lambda_i t} + \lambda} \right), i = n, m_1, m_2 \quad (8)$$

Here we explore the application of this equation with the inclusion of muogenic production. Using a series expansion, we rewrite the effective age related to muons (negative and fast), T_{em} , into a fraction, g , of the effective age related to nucleons, T_{en} . The fraction g can be approximated solely from knowledge of the denudation depth, D (see Appendix for derivation):

$$105 \quad g_i = \frac{T_{emi}}{T_{en}} \approx e^{-\frac{1}{2}\left(\frac{\rho D}{\lambda_{mi}} - \frac{\rho D}{\lambda_n}\right) + \frac{1}{24}\left[\left(\frac{\rho D}{\lambda_{mi}}\right)^2 - \left(\frac{\rho D}{\lambda_n}\right)^2\right]}, i = 1, 2 \quad (9)$$

Bringing g_i into eq. 3, we have

$$C(z) = P_{zn}T_{en} + P_{zm_1}g_1T_{en} + P_{zm_2}g_2T_{en} + C_{inh} = P_{ze}T_{en} + C_{inh},$$

$$P_{ze} = (P_{zn} + P_{zm_1}g_1 + P_{zm_2}g_2) \quad (10)$$

where P_{ze} is the effective production rate from both nucleons and muons under the condition of a finite amount of steady denudation over the lifetime of the deposit.

Using equation 10, T_{en} and C_{inh} can be found by applying least-squares linear regression with known production rates, denudation, and sample concentrations, similar to the general inversion case for no denudation described by equation 4.

To estimate the exposure age, we need to find the solution for

$$f(t) = \left(\frac{1 - e^{-\left(\frac{\rho D}{t \lambda_n} + \lambda\right)t}}{\frac{\rho D}{t \lambda_n} + \lambda} \right) - T_{en} = 0 \quad (11)$$

115 While the complicated form of eq. 11 prohibits a direct solution, t may be found iteratively by applying the Newton's method. Using the derivative of eq. 11,

$$f'(t) = -\lambda e^{-\left(\frac{\rho D}{\lambda_n}\right)D - \lambda t} - \frac{\rho D T_{en}}{\lambda_n t^2}, \quad (12)$$

the exposure age can then be iterated from

$$t_{n+1} = t_n - \frac{f(t_n)}{f'(t_n)} \quad (13)$$

120 with initial guess, $t_0 = T_{en}$.

3 Applications

We present a set of example applications of linear regression to TCN depth profiles using both the denudation-rate (eqs. 6, 7) and the denudation-depth technique (eqs. 8-13). We begin with simulated TCN depth profiles to explore the impacts of scatter of sample concentration, low inheritance, denudation, and sample depth on the accuracy and precision of our approach, and to
 125 compare the performance of linear regression with the estimations using a Bayesian Monte-Carlo Markov Chain approach. We then demonstrate the linear regression technique with two case examples. For the Beida River T2 terrace of the North Qilian Shan, China (Wang et al., 2020), we demonstrate using the denudation-rate approach to explore the possible range of exposure age and the trade-offs between age and denudation rate; we also demonstrate how to use the denudation-depth approach combined with Monte Carlo simulation to estimate the full distribution of exposure age and inheritance. For the Lees
 130 Ferry site on the Colorado River (Hidy et al., 2010), we compare results from our denudation-depth approach with the originally published data.

To explore the full distribution of possible estimated age and inheritance, we consider the uncertainty propagated from five different sources: uncertainty of the ^{10}Be concentration measurements, uncertainty of sample depths, uncertainty of sediment density, uncertainty of the denudation depth or rate, and the uncertainties related to TCN production and decay (i.e., the
 135 attenuation length, production rates, etc.). These uncertainties propagate sequentially, first from ^{10}Be concentration, sample depths, and sediment density through the least-squares linear regression process, and second from denudation rate or depth through converting exposure age from the effective exposure age (T_e). Because of the limited sample sizes typical of most studies, and the variance in both concentration and depth, we apply a Monte Carlo sampling approach for the range of each input parameter. The code used here is archived in Github (<https://github.com/YiranWangYR/10BeLeastSquares>). Our
 140 procedure includes the following steps. Step 1: generate all the input parameters for one model, sampling distributions for ^{10}Be concentration, sample depth, density, denudation rate/depth, production rate, attenuation length, etc. Depending on the parameter, we represent uncertainty as either a normal or uniform distribution. Step 2: fit these sampled input parameters with eq. 4 or eq. 6 or eq. 10 to derive best-fit sample T_{en} and inheritance values. Step 3: calculate the exposure age use T_{en} from step

2 and parameters generated from step 1 using eq. 5 or eq. 7 or eqs. 11-13. Repeat step 1-3 for many times to produce a
 145 distribution of age and inheritance results.

3.1 Simulated TCN depth profiles

To demonstrate how our approach will perform under different circumstances, we generate a series of simulated depth profiles
 to test how closely the estimated age and inheritance will reflect the true values. With these profiles, four different scenarios
 are tested: varying degrees of random deviation of sample concentrations, varying amount of denudation, low inheritance, and
 150 deep sample depth. For comparison, we use a Bayesian Monte-Carlo Markov Chain (Metropolis–Hastings algorithm) approach
 (codes:

https://github.com/YiranWangYR/10BeLeastSquares/blob/581892b6b50a255ab30810efbe6e6e68c0b984c5/Be10_LRvsBayesian.m)
 to estimate the exposure age and inheritance along with our linear regression approach. We choose to use our own
 coding following Bayesian inversion principles instead of a published codes because, first, we need to ensure the input
 155 variables are the same for both approaches; second, to be statistically significant, we need to apply both approaches several
 hundred times for each scenario, therefore manually doing so with published codes would be extremely time consuming.

For all simulated profiles, we set the true age and inheritance to be 200 kyr and 100×10^3 atoms/g except for the low inheritance
 scenario, where we set inheritance to 0 and 5000 atoms/g. Each simulated profile contains 6 samples; to mimic realistic scatter
 of sample concentrations, all the simulated samples are deviated from the true profile based on an assigned normal distribution
 160 of either 1, 2, 5, or 10% standard deviation. Analytical uncertainties (2% standard deviation) are assigned to each sample of
 the simulated profile to mimic realistic values. For each scenario, 500 simulated profiles are generated and inverted for age
 and inheritance using both the linear regression and Bayesian approaches. The details of our simulation process and the
 parameters we used for each scenario are listed in Table 1.

Table 1 Parameters used for each simulation scenario.

| Scenario | | 1: Deviation of concentration | 2: low inheritance | 3: denudation | 4: deep profile |
|---|-----------------|-------------------------------|--------------------|---------------|-----------------|
| Numbers of profiles | | 500 | | | |
| True exposure age (kyr) | | 200 | | | |
| Production rate ¹ (atoms/(g × yr)) | Nucleon | 10 | | | |
| | Muon (negative) | 0.014 | | | |
| | Muon (fast) | 0.051 | | | |
| Attenuation (g/cm ²) | Nucleon | 160 | | | |
| | Muon (negative) | 1500 | | | |
| | Muon (fast) | 4320 | | | |
| Decay constant(s ⁻¹) | | 4.997E-07 | | | |
| Sediment density (g/cm ³) | | 2.0 | | | |

| | | | | |
|---|--------------------------------|--------------------------------|---|--|
| Concentration uncertainty ² (1 σ , %) | 2 | | | |
| Deviation of concentration ³ (1 σ , %) | 2, 5, and 10 | 5 | 5 | 1 and 5 |
| Sample depths (cm) | [25; 50; 70; 110; 150; 200] | [25; 50; 70; 110; 150; 200] | [25; 50; 70; 110; 150; 200] | [325; 350; 370; 410; 450; 500] |
| Sample depth uncertainty (1 σ ; cm) | 5 | | | |
| Inheritance ($\times 10^3$ atoms/g) | 100 | 0 and 5 | 100 | 100 |
| Denudation (cm) | 0 | 0 | 1-, 2-, 3-, and 5-times attenuation length | 0-, 2- and 5-times attenuation length |
| Eq. used for linear regression | eq. 4 | eq. 4 | eq. 10 | eq. 4 and eq. 10 |

165

¹. Production rate is calculated based on a hypothetical middle latitude, 1000 m elevation site (Stone 2000; Braucher 2011)

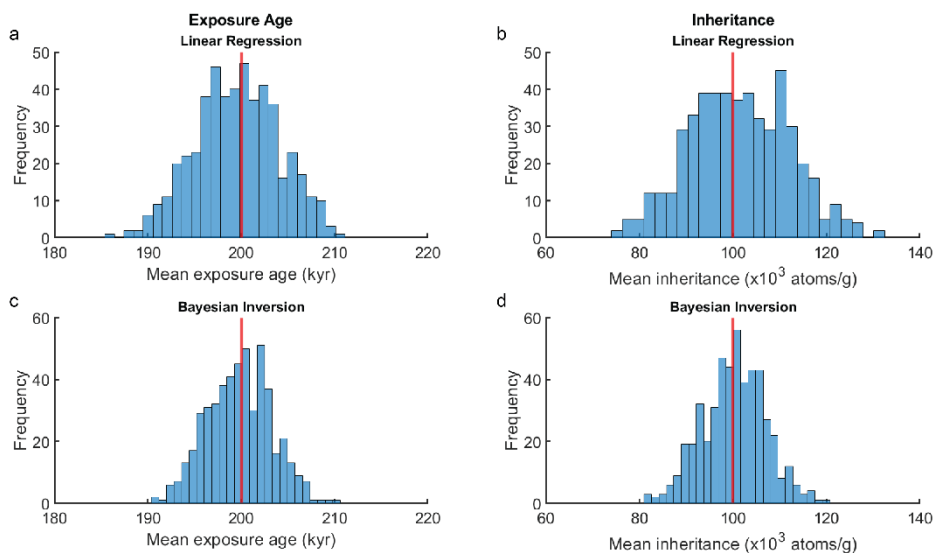
². The analytical uncertainty of sample concentration.

³. The amount that the mean sample concentration deviates from the true concentration.

170 3.1.1 Deviation of sample concentrations

We test three sets of simulations under different degrees of imposed deviation of sample concentrations (standard deviation of 2%, 5%, and 10%) with no denudation. The 2% deviation case matches the analytical uncertainty (2%), while the 5% and 10% cases introduce excess scatter, as is typically found in TCN depth profiles. For the case with 2% of deviation, we find both linear regression and Bayesian approaches yield results centered around the true age (200 kyr). For the linear regression approach, 95% of the mean ages fall within 4.0-4.5% error range of the true age, while for the Bayesian approach 95% of the mean age fall within 3.0-3.5% error range of the true age. The Bayesian approach works slightly better than linear regression for the more extreme (noisier) cases (Fig. 2, S1). For inheritance estimation, similar to the exposure age, both approaches return results centered around the true value (100,000 atoms/g), and a Bayesian approach again performs somewhat better for noisier data. When the sample deviation increases to 5%, then to 10%, the estimated age and inheritance values remain centered on the correct age and inheritance while the ranges of the mean estimations for both approaches expand significantly, indicating a decrease of precision as the noise level increases (Fig. 2, fig. S1-S3). With 5% of deviation, 95% of the estimated ages fall within 10% and 8% ranges of the true value for linear regression and Bayesian approach respectively. With 10% of deviation, 95% of the estimated age fall within 21% and 17% ranges of the true value for linear regression and Bayesian approach respectively. We also find the error range for the estimation results from the linear regression is moderately larger than a Bayesian approach (Fig. S1-S3). Importantly, we find that while each approach provides different estimation results for the same set of samples, one model does not consistently perform better than the other (Fig. S1-S3). About 40-45% of the time the linear regression returns results closer to the true age than the Bayesian approach.

185



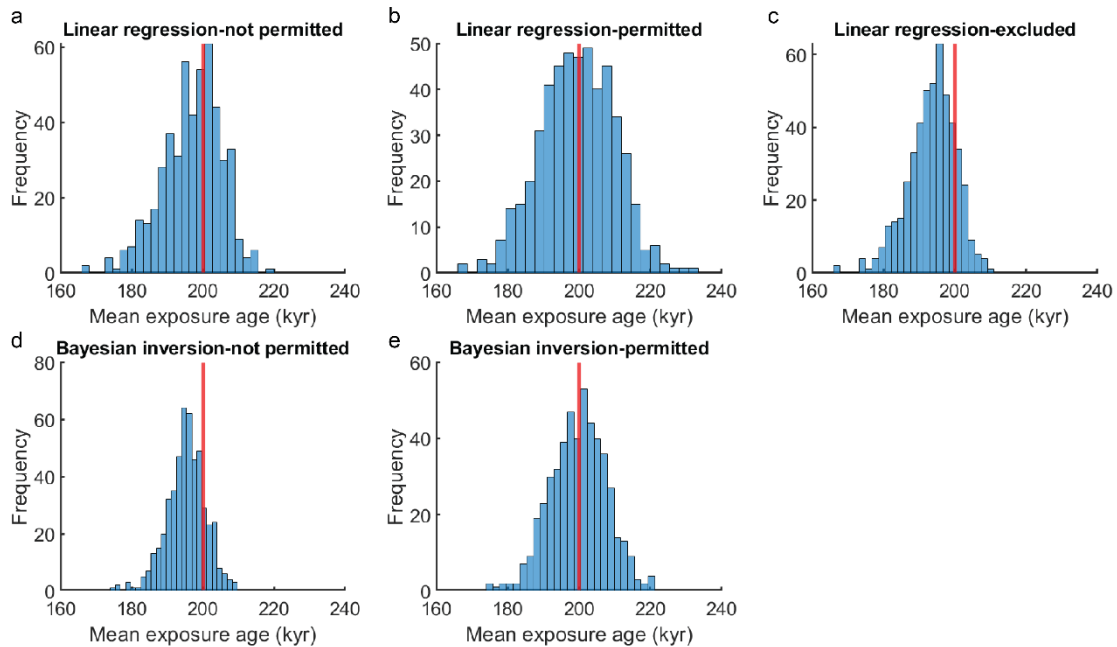
190 **Figure 2** Distribution of mean exposure age (a and c) and inheritance (b and d) estimated from linear regression (eq. 4; a and b) and a Bayesian approach (c and d) for 500 simulated profiles with 2% of imposed sample deviation. Red vertical line annotates the true age and true inheritance.

3.1.2 Low inheritance

For profiles with very low or zero inheritance, we find that imposing the physically reasonable prerequisite that inheritance must be non-negative may lead to underestimation of the exposure age. This occurs for both linear regression and Bayesian approaches that we tested. For profiles generated with 5% imposed deviation of sample concentrations and zero inheritance (Table 1), we compare three different ways to treat negative inheritance under linear regression: permit negative inheritance during inversion, do not permit negative inheritance during inversion through setting a zero-inheritance boundary condition, and excluding negative inheritance outcomes after inversion. For the Bayesian approach, we compare boundary conditions of permitting versus not permitting negative inheritance. The distributions of the mean exposure age (Fig. 3; fig. S4) show that, for linear regression, not permitting negative inheritance leads to a skewed distribution, with the results centered around 197 kyr, while excluding negative inheritance afterwards produces a further biased result with a mean centering around 193 kyr. The Bayesian approach also performs slightly less well; not permitting negative inheritance leads to the estimated results centering around 195 kyr. When negative inheritance is permitted during inversion process, both approaches produce results that centered well around the true age. For a more realistic case, when we set the true inheritance of the profile as 5000 atoms/g, the estimated exposure ages are also deviated to be younger (though not as much as the zero-inheritance case) unless negative inheritance is permitted during the inversion (Fig. S5).

200

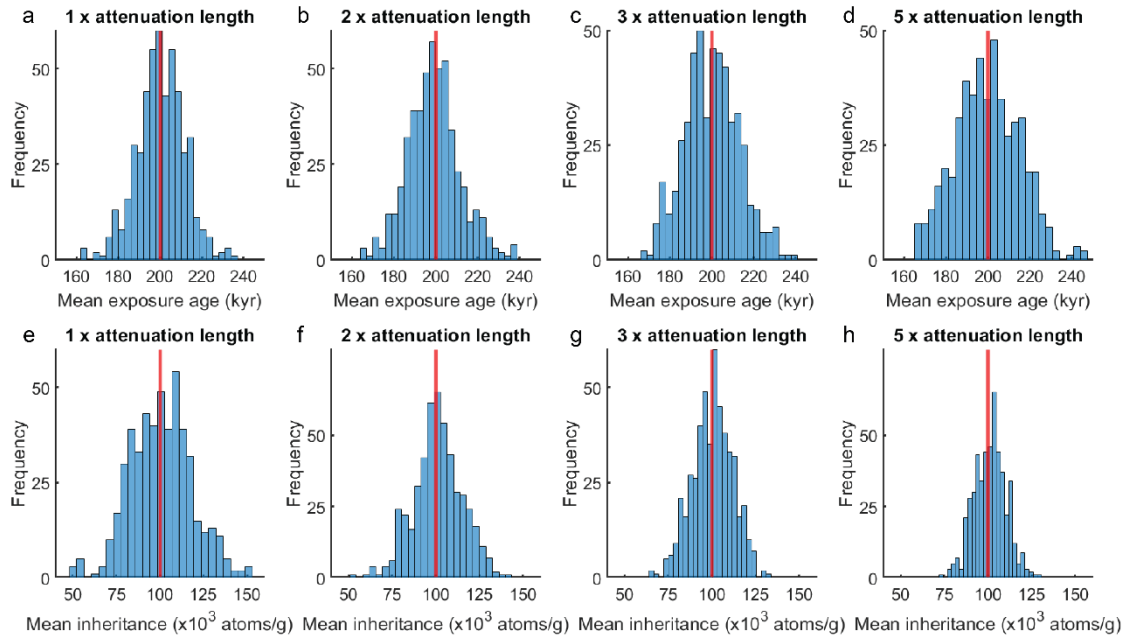
205



210 **Figure 3** Distribution of mean exposure age estimated from linear regression (eq. 4; a, b, and c) and a Bayesian approach (d and e) for 500 simulated profiles with 0 inheritance and 5% of imposed sample deviation. a and d, not permitting negative inheritance during inversion. b and e, permit negative inheritance during inversion, c, excluding negative inheritance results after inversion. Red vertical line annotates the true age and true inheritance.

3.1.3 Denudation depth

To test the robustness of our denudation-depth approach, we tested simulated TCN depth profiles with total denudation of 1, 215 2, 3, and 5-times the nucleon-spallation attenuation length ($\frac{\rho}{\lambda_n}$) and 5% of imposed sample deviation (Table 1). The resulting distributions of the mean age (Fig. 4) are all well centered around the true age even with the largest amount of denudation tested. We also observe that when total denudation reaches 3- and 5-times attenuation length, the ranges of the estimated mean age grow slightly wider, indicating a decrease of precision. This phenomenon can also be observed with the Bayesian approach (Fig. S6), which suggests it is not a result of the approximation introduced through eq. 9. Instead, we suggest this problem 220 relates to low concentration gradient for profiles with a large amount of denudation, making the inversion more sensitive to measurement error. We find that the distribution of the mean inheritance remains well centered around the true inheritance for all simulated profiles, even for profiles with denudation equal to 5-times attenuation length.



225 **Figure 4** Distribution of mean exposure age (a-d) and inheritance (e-h) estimated from linear regression (eq. 10) for 500 simulated (5000 atoms/g) TCN profiles with 5% of imposed sample deviation and with total denudation equals to 1 (a and e), 2 (b and f), 3 (c and g) and 5-times (d and h) attenuation length of spallation. Red vertical line annotates the true age and true inheritance.

3.1.4 Deep sample profiles

Samples at depths greater than ~2 m are especially sensitive to muogenic production (Fig. 1). Here we test our denudation-depth approximation with depth profile samples distributed between 3 and 5 m depth to mimic the situation when near surface samples are not obtainable. Three groups of profiles, subjected to a total denudation of 0, 2, and 5-times the spallation 230 attenuation length and with 5% of imposed sample deviation, are tested with both linear regression and Bayesian approach (Table 1).

We find that compared to the near-surface profiles, results from the deep profiles show greatly reduced precision, especially for large denudation depths (Fig. 5, S7). The majority (95% confidence) of the mean exposure ages estimated with linear 235 regression spread between 100-300 kyr, 20-400 kyr, and 0-570 kyr, for surfaces with 0, 2, and 5-times attenuation length of denudation, respectively (Fig. 5). This occurs with both linear regression and Bayesian approaches, indicating the precision drop is not due to our approximation of muogenic production (eq. 9). Similar to the examples with large denudation (Fig. 4), we suggest the low precision is a result of the very low concentration gradient at depth. Different from near-surface profiles, a small change in the concentration gradient at depth leads to a large change of the estimated exposure age, which makes the 240 inversion overly sensitive to random scatter of sample concentrations. As a comparison, by setting the imposed sample deviation to 1% instead of 5%, we find that precision increases greatly (Fig. 6). With linear regression, the majority (95% confidence) of the mean exposure ages are distributed between 180 - 220 kyr, 162 - 242 kyr, and 131-275 kyr for 0, 2, and 5-

times attenuation length denudation, respectively (Fig. 6, S8). Thus, theoretically, both linear regression and Bayesian approach can produce accurate estimates if the scatter of sample concentrations is low. Reducing analytical uncertainty through use of large sample masses would be crucial for the success of a deep sample profile.

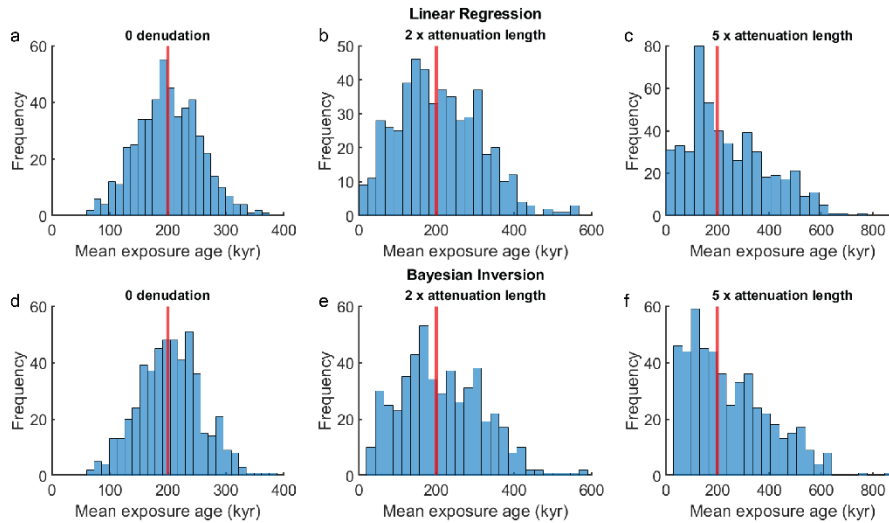


Figure 5 Distribution of age estimations from linear regression (a-c) and a Bayesian approach (d-f) for 500 simulated TCN deep (3-5 m) profiles with denudations equal to 0 (a, d), 2 (b, e), and 5-times (c, f) attenuation length, and with 5% imposed deviation of sample concentration. 500 groups of inversion results.

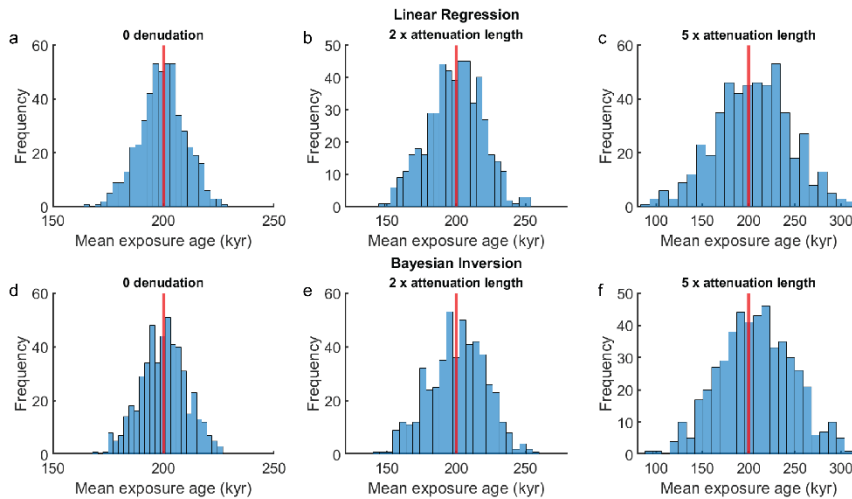
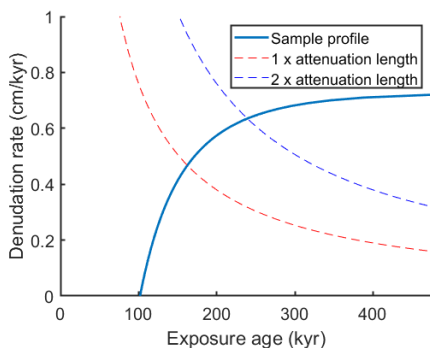


Figure 6 Distribution of age estimations from linear regression (a-c) and a Bayesian approach (d-f) for 500 simulated TCN deep (3-5 m) profiles with denudations equal to 0 (a, d), 2 (b, e), and 5-times (c, f) attenuation length, and with 1% imposed deviation of sample concentration. 500 groups of inversion results.

Here we present two case examples to show the application of our linear regression model to natural conditions. Wang et al. (2020) excavated a sample pit ~2 m deep beneath the tread of a terrace deposit from the Beida River, within the North Qilian Shan, western China. The site is covered with 125 cm loess which was deposited continuously since 8.3 kyr. Beneath the loess cover, erosional truncation of the A and uppermost B horizon of the soil profile indicates that there may have been 20-60 cm of erosion of the terrace tread prior to the onset of loess accumulation. We collected six samples of medium to coarse sand from up to 2 m below the base of the loess. ^{10}Be concentrations for these samples, corrected for loess accumulation using the approach of Hetzel et al. (2004) are listed in table S1.

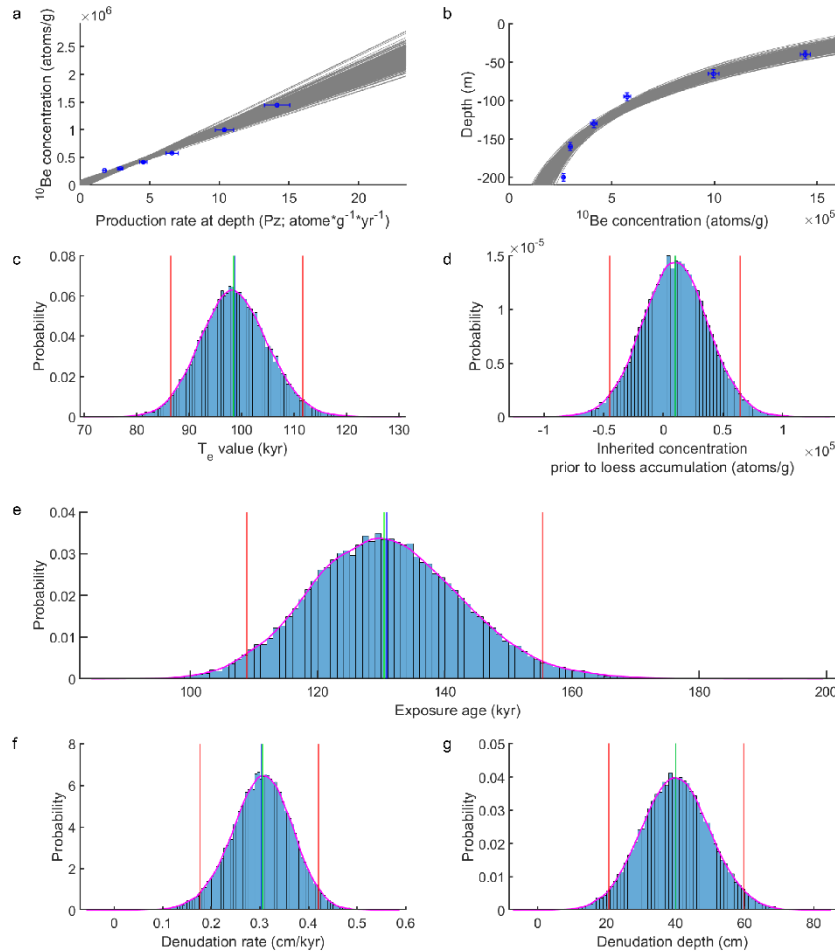
To explore the effect of denudation rate, we use the most likely concentrations for each sample and invert for a preliminary T_{en} and inheritance values of 99.3 kyr and 8.3×10^3 atoms/g respectively, using eq. 6. Using eq. 7, we generate a plot of exposure age vs. denudation rate based on the preliminary T_{en} value. The plot (Fig. 7) shows that if there has been no denudation, the sample site has a minimum exposure age of ~102 kyr prior to loess accumulation. This exposure age increases to 160 kyr and 240 kyr when the denudation equals to 1 and 2-times the attenuation length, respectively. When the denudation rate reaches ~0.7 cm/kyr, the TCN accumulation and denudation reach equilibrium and no age may be determined.



270 **Figure 7 exposure age-denudation rate relationship of the Beida River terrace**

To explore the full distribution of potential age and inheritance results, we apply a Monte Carlo sampling of the sample concentrations, depths, denudation depth, etc. (Table S2). Using a normal distribution for the denudation depth with 40 cm as the mean and 10 cm as the standard deviation, we apply least-squares linear inversion with eq. 10. Best-fit results for ^{10}Be concentration (C_1) and effective production rate (P_{ze}) are shown on figure 8a, and the corresponding fitted depth profile curves are shown on figure 8b. The T_{en} and inheritance values are 86.4-111.6 kyr and -4.5×10^4 to $+6.4 \times 10^4$ atoms/g, respectively (ranges correspond to the 95% confidence distributions for each value, figures 8c and 8d). The corresponding exposure age, calculated following eq. 11-13, is 108.9-155.4 kyr (2σ) prior to loess accumulation (Figure 8e). Excluding the negative inheritance results, the possible range of inheritance is $0-6.4 \times 10^4$ atoms/g. The corresponding erosion rate is 0.18-0.42 cm/kyr (Figure 8f and 8g). If we do not permit negative inheritance during the inversion, the resulting exposure age and inheritance

280 would be 107.2-143.9 kyr and $0-4.6 \times 10^4$ atoms/g. (2σ) instead. This ~ 5 kyr shift of the mean age is consistent with the expected effect of excluding negative inheritance during the fitting process.



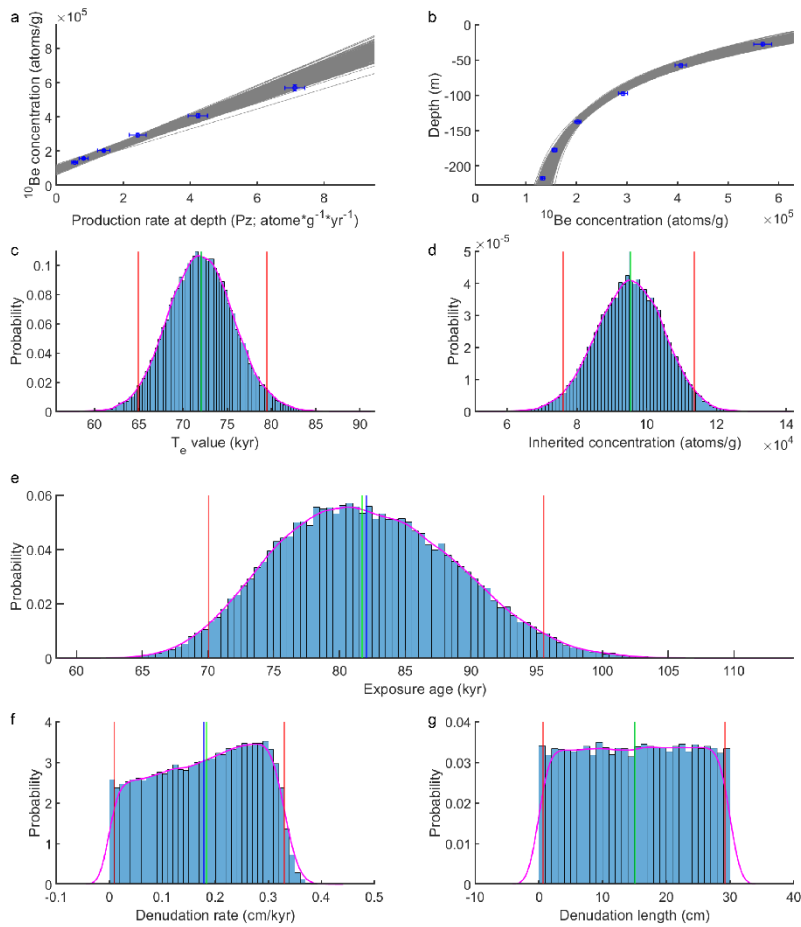
285 **Figure 8** Linear regression results for Beida River T2 terrace using denudation-depth approach after 100,000 iterations. **a.** Relationship of sample concentration to production rate at depth. Grey lines are the best fit lines through this data set; **b.** distribution of depth profile models with best fit curves (grey lines). **c.** Distribution of the effective exposure age (T_e); **d.** Distribution of the inherited ^{10}Be concentration prior to loess accumulation. **e.** Distribution of exposure age estimates derived from T_{en} values from linear regression (Figure 8c). **f.** Distribution of denudation rates predicted by the model; **g.** Distribution of sampled total denudation-depth. Red lines indicate 95% confidence range, green line indicates the median of the distribution, blue line indicates the mean of the distribution.

290

Hidy et al. (2010) reported a ^{10}Be depth profile from the Lees Ferry site, excavated on top of a Colorado River fill terrace. Based on the soil profile, a total erosion of 0-30 cm is estimated for the sample site. For this site Hidy et al. (2010) applied their Monte-Carlo model and originally reported an exposure age and inheritance of 69.8-103 kyr, and 6.97-10.70 atoms/g, respectively (95% confidence). After updates of their code (v1.2, Hidy et al., 2010; Mercader et al., 2012), including the

295 incorporation of a Bayesian fitting process, their model provides a new age estimation of 76.6-96.1 kyr. See Hidy et al. 2010 for more details of the sample site, sampling and processing, age results interpretation.

Following the original study, we apply our modelling approaches to the sand depth-profile data (Table S1). In order to compare with results reported by Hidy et al. (2010), we use the same values they do for all parameters wherever possible (Table S2). Similar to the Beida River depth profile, we estimate the exposure age with the denudation-depth approach, applying Monte
 300 Carlo simulation of the uncertainty of input parameters. With a uniformly distributed 0-30 cm denudation length, the inverted best fit lines and curves are in figure 9a and 9b. The estimated range of T_e and C_{inh} values are 65.0-79.6 kyr and $7.6-11.4 \times 10^4$ atoms/g, respectively (95% confidence; Figure 9c and 9d). The estimated exposure age is 70.0-95.5 kyr (95% confidence; Figure 9e).



305 **Figure 9** Linear regression results for Lees Ferry data set with denudation-depth approach after 100,000 iterations. **a.** Relationship of sample concentration to production rate at depth. Grey lines are the best fit lines for the data. **b.** distribution of depth profile models with best fit curves (grey lines). **c.** Distribution of the effective exposure age (T_e); **d.** Distribution of inherited ^{10}Be concentration. **e.** Distribution of exposure age estimates derived from T_e values from linear regression (Figure 9c). **f.** Distribution of denudation rates predicted by the model. **g.** Distribution preset of total denudation-depth. Red lines indicate 95% confidence error
 310 range, green line indicates the median of the distribution, blue line indicates the mean of the distribution.

4. Discussion

4.1 Case-Example Comparison

For the Beida River site, comparing the age determined here (108.9-155.4 kyr) to that we reported previously (107.9-164.5 kyr; Wang et al., 2020), the mean is 3% younger, while the 95% error range is 18% smaller. These differences come from three different sources. First, there is a ~1% shift that arises from independently sampling depth for each measurement (the depth distributions for each sample were not sampled independently in the original paper). Second, the original paper did not take muogenic production into account. The contribution from muons leads to slightly younger age and lowers the inheritance. Third, we applied the denudation-rate approach (eq. 6) in the 2020 paper, and the corresponding denudation rate distributions are slightly different for the two approaches. Combined, the addition of muogenic contribution and using a denudation-depth instead of denudation-rate approach leads to ~2% shift of the mean age and to 18% narrowing of the error range.

For the Lees Ferry site, our age estimation of 70.0-95.5 kyr using denudation depth approach generally agrees with the result reported by Hidy et al. (2010), 69.8-103 kyr (or 76.6-96.1 kyr based on recalculation with updated v1.2 code), though small discrepancies in mean age and 95% confidence range remain between the two approaches. We suggest this arises from two different sources. First, as demonstrated in section 3.1.1 and figures S1-3, most of the discrepancy may be due to differences between the least-squares and Bayesian model. Secondly, we use a two-term approximation for muogenic process in our model instead of a 5-term approximation used in the original study (Hidy et al., 2010), which may lead to a minor estimation discrepancy.

4.2 Sources of error

4.2.1 Denudation

Denudation and its uncertainty constitute a major source of error in exposure age estimation. With the same surface ^{10}Be concentration, higher denudation rate and/or larger denudation depth would result in an older effective surface age (e.g. Figure 1). If a surface is sufficiently old, or if the denudation rate is sufficiently high, the TCN build up at surface will reach equilibrium with nuclides removed through erosion (Lal, 1991). Figure 10a shows the relationship between denudation rate and surface age (Eq. 7). This figure suggests that once the denudation depth exceeds the mean attenuation length of nucleon spallation ($\frac{A_n}{\rho}$), the slope of the age versus erosion rate relationship degrades the age determination. Once the denudation depth exceeds twice of the attenuation length of spallation, the age versus denudation rate curve flattens so much that it becomes effectively impossible to estimate surface age using a denudation-rate approach. On the other hand, the age-denudation depth curve does not flatten as much (Figure 10b), and therefore it is theoretically possible to use the denudation depth to determine surface age even when total denudation exceeds twice of the attenuation length. Our simulated depth-profile analysis also shows that the denudation-depth approach can provide accurate estimations even with denudation reaches 5 times spallation attenuation length. In practice, however, surfaces with such a large amount of denudation would subject to large uncertainties

and the denudation history may be too complex for the constant denudation rate assumption, which underlies both approaches, to be valid, casting doubt on the utility of ^{10}Be exposure dating for such cases.

Denudation affects the uncertainty of exposure age estimation in two different ways. First, the uncertainty on the final age increases with denudation rate or depth because of the non-linear relationship between age and denudation (Figure 10). Second, the age uncertainty will increase further through propagation of the uncertainty of the denudation. This suggests that when excavating depth profile pits in surfaces subject to denudation, it is crucial to document surface texture and analyze the soil profiles to estimate denudation depth, for a small deviation from the true denudation rate or depth would lead to a large bias in the resulting exposure age (Ebert et al., 2012; Frankel et al., 2007; Hidy et al., 2010; Mercader et al., 2012; Ruzkiczay-
350 Rüdiger et al., 2016).

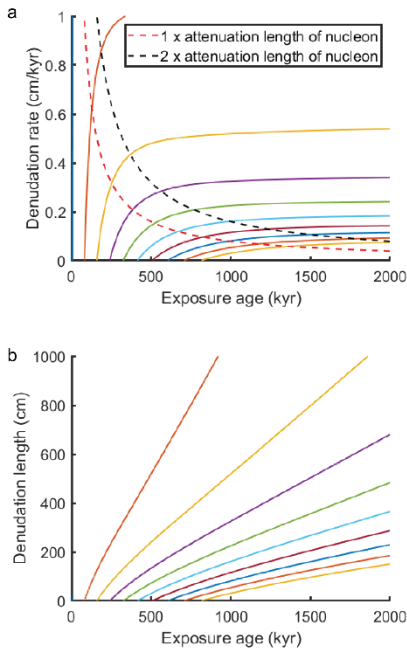


Figure 10 a. The relationship between denudation rate and exposure age. Each colored line representing the age-denudation relationship of a specific depth profile (or surface concentration). b. The relationship between denudation depth and exposure age; the color coding matches scenarios shown in a.

355 4.2.2 Muogenic production

Muogenic production affects the accuracy of the estimated surface ages differently for the various approaches considered here. For surfaces with no denudation, muons may be fully incorporated into the inversion (eq. 4), therefore the uncertainty only comes from the uncertainties of parameters related to muogenic production (attenuation length and production rate). When denudation is present, both denudation-rate and denudation-depth approaches come with error related to muons. For the
360 denudation-rate approach, which ignores muons and only models on the relationship between ^{10}Be concentration and nucleon

spallation production rates (eq. 6), there is a slight overestimation of exposure age and inheritance. This is because the inversion process attributes a small portion of the muogenic concentration to nucleon spallation, and a larger portion is attributed to inheritance. For the denudation-depth approach, there is a negligible error related to the approximate solution for the muogenic contribution (Appendix A).

365 To evaluate the error related to muogenic production, we generate profiles with various exposure ages and denudation amounts and compare the estimated results with the true values (Fig. 11). We set the contribution of muogenic production to total surface production as 2%, though in reality the contribution of muons in most places on earth is smaller (Braucher 2011, 2013; Balco 2008, 2017); therefore, the errors presented here can be treated as a maximum. We find the error introduced by ignoring muons with the denudation-rate approach is relatively small (less than 2% and 5% of overestimate) when the total denudation is under one- or two-times attenuation length for spallation (Figure 11a). Above three-times this attenuation length, the error grows drastically until no meaningful result can be found. Compared to the denudation-rate approach, the denudation-depth approach reduces the error by at least one order of magnitude (Figure 11b); even with very large total denudation (five times the attenuation length), the error is smaller than 0.3%. Like exposure age, the error in estimated inheritance is related to denudation and exposure age. As demonstrated in figure 11c the overestimation of inheritance from the denudation-rate approach increases with the surface age, but slightly decreases as the denudation increases. As a comparison, the amount of error from the denudation-depth approach (Fig. 11d) is one order of magnitude smaller than the denudation-rate approach.

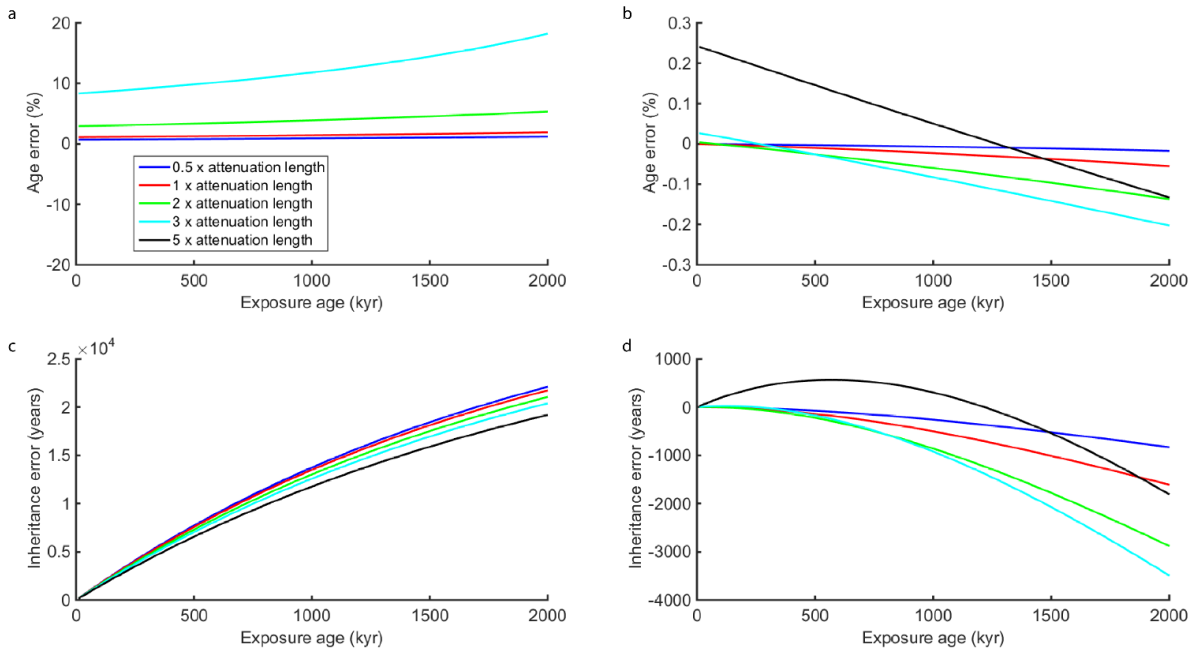


Figure 11. Error vs. exposure age under five different denudation conditions. Each line represents a modeled surface that has undergone various exposure times, but with the same total denudation, expressed as a multiple of the attenuation length, $\frac{\rho}{\Lambda_n}$

380 spallation (see legend). a. percentage error in exposure age resulting from application of denudation-rate approach. Note that when
total erosion reaches 5 times attenuation length, no meaningful result can be found using this technique. b. percentage error in
exposure age resulting from application of denudation-depth approach. c. error in inheritance, expressed in years based on surface
production rate, resulting from application of denudation-rate approach. d. error in inheritance, expressed in years based on surface
production rate, resulting from application of denudation-depth approach.

385 4.2.3 Other sources of error

As demonstrated with the Beida River sample site and the simulated profiles, low inheritance may lead to underestimation of
the exposure age if negative inheritance is not permitted during inversion. Negative inheritance, though physically
unreasonable, may be predicted because of the uncertainties within the sample measurements and other parameters related to
the TCN concentration. When a profile exhibits very low inheritance, the estimated distribution of the exposure age should
390 center around the true age, with approximately half of the estimated older ages correlated to lower, and possibly negative
inheritance, and the other half younger ages correlated to higher, positive inheritance. Imposing a boundary that prevents
negative inheritance will lead to a shift of the inheritance distribution to a positive value, which will in turn lead to a shift of
the estimated age distribution to younger values. Therefore, when dealing with surfaces with very low inheritance, extra
caution is needed when setting boundaries for the inheritance. We suggest permitting negative inheritance when performing a
395 linear regression to avoid underestimation of the age and overestimation of the inheritance. A second-best choice is not to
permit negative inheritance when perform a linear regression (i.e. setting inheritance to zero for these cases), while excluding
the results with negative inheritance would lead to the most severe underestimation of the exposure age.

Additional sources of error exist for TCN depth-profile ages that we do not consider in this study. Time-dependent phenomena
are not considered. Constant production rate is an important assumption needed to simplify the nuclear build up process to
400 apply a linear regression approach. In fact, the production rate is time dependent because the strength of Earth's magnetic field
varies with time (Balco, 2017; Desilets et al., 2006; Dunai, 2001; Lifton et al., 2005; Stone, 2000). Extending our model to
account for temporally variable production rate is beyond the scope of present study. Constant inheritance and a single value
for sediment density are other key assumptions for our approach. Sediments sampled from depth profiles are assumed to be
well mixed at the time of deposition and to have been deposited rapidly, such that the inherited concentration and density
405 should be the same at every depth. This will not be true for sites with incremental deposition, and for sites where the
depositional process or catchment-wide denudation rates vary with time.

5 Conclusions

We introduce a least-squares linear inversion approach to solve cosmogenic nuclide concentration depth profiles for surface
exposure age and inheritance, considering denudation rate, denudation depth, and muogenic production. This method allows
410 propagation of error sources using Monte-Carlo sampling to infer full probability distributions of age and inheritance. In
addition, our model presents a straightforward way to assess the trade-offs between exposure age and denudation rate.

Based on the inversion results of simulated profiles, we show that the least-squares linear regression is a robust approach suitable for most exposure dating scenarios. The accuracy of linear inversion is comparable to a Bayesian approach for most circumstances, except for the more deviated (noisier) sample sets. Importantly, neither inversion approaches consistently outperforms the other.

For surfaces with no denudation, the inversion using eq. 4 provides an exact solution. For surfaces with denudation, the approximation of muogenic production using denudation-depth approach (eq. 10) introduces negligible error even for surfaces with a large amount of denudation. The denudation rate approach (eq. 7), though less accurate, provides a useful tool to explore exposure rate vs. denudation rate relationship. Examples of deep profiles suggest that the linear inversion approach works equally well for samples that collected deeper than 2 m from the surface, with or without denudation. However, extra caution is needed when collecting and analyzing deep samples to minimize measurement error, as the resulting ages are much more sensitive to the scatter of concentration values relative to near-surface profiles.

Regardless of whether employing linear regression or a Bayesian approach, surfaces that have undergone a large amount of denudation will be subjected to large uncertainties related to the denudation rate or depth. It also becomes more tenuous in such cases to assume that the denudation rate was constant throughout the history of the deposit. It is entirely possible that a sample site may have experienced episodic erosional episodes instead of constant denudation rate, which would lead to errors in the age not accounted for in the methods described here.

Appendix A

When $\varepsilon > 0$, the effective exposure age T_e takes the following form,

$$T_{ei} = \left(\frac{1 - e^{-\left(\frac{\rho\varepsilon}{\Lambda_i} + \lambda\right)t}}{\frac{\rho\varepsilon}{\Lambda_i} + \lambda} \right) = \frac{1 - e^{-B_i t}}{B_i}, B_i = \frac{\rho\varepsilon}{\Lambda_i} + \lambda, i = n, m1, m2. \quad (A1)$$

This suggests values for T_e value are functions of both ε and t for different production pathways. Between the two variables, ε may be known, while t is unknown. Therefore, our aim is to rewrite A1 into an approximate form where t can be isolated.

We first take a natural logarithm of the T_{em} over T_{en} ratio

$$\ln\left(\frac{T_{em}}{T_{en}}\right) = \ln\left(\frac{\frac{1 - e^{-B_m t}}{B_m}}{\frac{1 - e^{-B_n t}}{B_n}}\right) = \ln\left(\frac{\frac{1 - e^{-B_m t}}{B_m t}}{\frac{1 - e^{-B_n t}}{B_n t}}\right) = \ln\left(\frac{1 - e^{-B_m t}}{B_m t}\right) - \ln\left(\frac{1 - e^{-B_n t}}{B_n t}\right) \quad (A2)$$

The expansion of a function, $f(x) = \ln\left(\frac{1 - e^{-x}}{x}\right)$, $x = B_i t$, in A2 may be achieved by writing a Maclaurin series with the following form

$$f(x) = f(0) + f'(0)x + \frac{f''(0)}{2!}x^2 + \dots + \frac{f^{(k)}(0)}{k!}x^k + \dots \quad (A3)$$

To write the expansion, we first rewrite $f(x)$ as

$$f(x) = \ln\left(\frac{1-e^{-x}}{x}\right) = \ln\left(\frac{1-\left(1-x+\frac{x^2}{2!}-\frac{x^3}{3!}+\frac{x^4}{4!}-\dots\right)}{x}\right) = \ln\left(1-\frac{x}{2!}+\frac{x^2}{3!}-\frac{x^3}{4!}+\dots\right) \quad (\text{A4})$$

440 In this form, $f(x)$ goes to zero when x goes to zero, therefore we have

$$f(0) = \ln(1) = 0 \quad (\text{A5a})$$

$$f'(x) = \frac{-\frac{1}{2}+\frac{x}{3}-\frac{x^2}{8}+\dots}{1-\frac{x}{2!}+\frac{x^2}{3!}-\frac{x^3}{4!}+\dots} \text{ and } f'(0) = \frac{-\frac{1}{2}}{1} = -\frac{1}{2} \quad (\text{A5b})$$

$$f''(x) \left(1 - \frac{x}{2!} + \frac{x^2}{3!} - \frac{x^3}{4!} + \dots\right) + f'(x) \left(-\frac{1}{2} + \frac{x}{3} - \frac{x^2}{8} + \dots\right) = \frac{1}{3} - \frac{x}{4} + \dots \text{ and } f''(0) = \frac{1}{12} \quad (\text{A5c})$$

We omit higher order derivatives from the series expansion.

445 ⋮

Bring A5 into A3, we have the expansion of $f(x)$ as

$$f(x) = -\frac{x}{2} + \frac{x^2}{24} + O(x^3) \quad (\text{A6})$$

Bringing A6 into A2, the natural logarithm of T_{em} over T_{en} ratio is

$$\ln\left(\frac{T_{em}}{T_{en}}\right) = \ln\left(\frac{1-e^{-B_m t}}{1-e^{-B_n t}}\right) = \ln\left(\frac{1-e^{-B_m t}}{B_m t}\right) - \ln\left(\frac{1-e^{-B_n t}}{B_n t}\right) = -\frac{B_m t}{2} + \frac{(B_m t)^2}{24} - \left(-\frac{B_n t}{2} + \frac{(B_n t)^2}{24}\right) + (O((B_m t)^3) - O((B_n t)^3)) \quad (\text{A7})$$

450

The contribution of the third, t^3 term, is negligible and may be neglected. Making the substitution $D = \epsilon t$, the first-order terms in A7,

$$-\frac{B_m t}{2} + \frac{B_n t}{2} = -\frac{1}{2}\left(\frac{\rho D}{\Lambda_m} + \lambda t - \frac{\rho D}{\Lambda_n} - \lambda t\right) = -\frac{1}{2}\left(\frac{\rho D}{\Lambda_m} - \frac{\rho D}{\Lambda_n}\right). \quad (\text{A8})$$

This result is independent of the exposure age, t .

455 With the same substitution, the second-order terms in A7,

$$\frac{(B_m t)^2}{24} - \frac{(B_n t)^2}{24} = \frac{1}{24}\left[\left(\frac{\rho D}{\Lambda_m} + \lambda t\right)^2 - \left(\frac{\rho D}{\Lambda_n} + \lambda t\right)^2\right] = \frac{1}{24}\left[\left(\frac{\rho D}{\Lambda_m}\right)^2 + \frac{2\rho D\lambda t}{\Lambda_m} + (\lambda t)^2 - \left(\frac{\rho D}{\Lambda_n}\right)^2 - \frac{2\rho D\lambda t}{\Lambda_n} - (\lambda t)^2\right] = \frac{1}{24}\left[\left(\frac{\rho D}{\Lambda_m}\right)^2 - \left(\frac{\rho D}{\Lambda_n}\right)^2 + \frac{1}{24}\left[\frac{2\rho D\lambda t}{\Lambda_m} - \frac{2\rho D\lambda t}{\Lambda_n}\right]\right]. \quad (\text{A9})$$

In equation A9, the first term of the right-hand side is independent of age, t , while the second term is dependent of age. We therefore choose to omit the second term of equation A9 in order to develop an age-independent approximation. We find that this term may be omitted for two reasons. First, the absolute value of A8 is at least one order of magnitude larger than A9, therefore omitting one term from A9 will not lead to significant decrease of accuracy of the overall approximation. Second, for young surfaces, λt is sufficiently small that the second term of A9 is much smaller than the first term, which means omitting it will lead to even smaller decrease of accuracy.

460

Therefore, an approximate form of the eq. A7 that is independent of t is

$$465 \quad \ln\left(\frac{T_{em}}{T_{en}}\right) \approx -\frac{1}{2}\left(\frac{\rho D}{\Lambda_m} - \frac{\rho D}{\Lambda_n}\right) + \frac{1}{24}\left[\left(\frac{\rho D}{\Lambda_m}\right)^2 - \left(\frac{\rho D}{\Lambda_n}\right)^2\right] \quad (\text{A10})$$

and the ratio between muon and nucleon effective age can be approximated as

$$\frac{T_{em}}{T_{en}} \approx e^{-\frac{1}{2}\left(\frac{\rho D}{\lambda_m} - \frac{\rho D}{\lambda_n}\right) + \frac{1}{24}\left[\left(\frac{\rho D}{\lambda_m}\right)^2 - \left(\frac{\rho D}{\lambda_n}\right)^2\right]} \quad (\text{A11})$$

Acknowledgments and data availability

470 This work was supported by the US National Science Foundation [grant number EAR-1524734] to Michael Oskin, and through Cordell Durrell Geology Field Fund to Yiran Wang. We placed our code at GitHub (<https://github.com/YiranWangYR/10BeLeastSquares>).

References

- 475 Anderson, R. S., Repka, J. L. and Dick, G. S.: Explicit treatment of inheritance in dating depositional surfaces using in situ 10Be and 26Al, *Geology*, 24(1), 47–51, 1996.
- Balco, G.: Production rate calculations for cosmic-ray-muon-produced 10Be and 26Al benchmarked against geological calibration data, *Quat. Geochronol.*, 39, 150–173, doi:10.1016/j.quageo.2017.02.001, 2017.
- Balco, G., Stone, J. O., Lifton, N. A. and Dunai, T. J.: A complete and easily accessible means of calculating surface exposure ages or erosion rates from 10Be and 26Al measurements, *Quat. Geochronol.*, 3(3), 174–195, doi:10.1016/j.quageo.2007.12.001, 2008.
- 480 Braucher, R., Brown, E. T., Bourlès, D. L. and Colin, F.: In situ produced 10Be measurements at great depths: Implications for production rates by fast muons, *Earth Planet. Sci. Lett.*, 211(3–4), 251–258, doi:10.1016/S0012-821X(03)00205-X, 2003.
- Braucher, R., Del Castillo, P., Siame, L., Hidy, A. J. and Bourlès, D. L.: Determination of both exposure time and denudation rate from an in situ-produced 10Be depth profile: A mathematical proof of uniqueness. Model sensitivity and applications to natural cases, *Quat. Geochronol.*, 4(1), 56–67, doi:10.1016/j.quageo.2008.06.001, 2009.
- 485 Braucher, R., Merchel, S., Borgomano, J. and Bourlès, D. L.: Production of cosmogenic radionuclides at great depth: A multi element approach, *Earth Planet. Sci. Lett.*, 309(1–2), 1–9, doi:10.1016/j.epsl.2011.06.036, 2011.
- Braucher, R., Bourlès, D., Merchel, S., Vidal Romani, J., Fernandez-Mosquera, D., Marti, K., Léanni, L., Chauvet, F., Arnold, M., Aumaître, G. and Keddadouche, K.: Determination of muon attenuation lengths in depth profiles from in situ produced cosmogenic nuclides, *Nucl. Instruments Methods Phys. Res. Sect. B Beam Interact. with Mater. Atoms*, 294, 484–490, doi:10.1016/j.nimb.2012.05.023, 2013.
- 490 Brocard, G. Y., van der Beek, P. A., Bourlès, D. L., Siame, L. L. and Mugnier, J. L.: Long-term fluvial incision rates and postglacial river relaxation time in the French Western Alps from 10Be dating of alluvial terraces with assessment of

- 495 inheritance, soil development and wind ablation effects, *Earth Planet. Sci. Lett.*, 209(1–2), 197–214, doi:10.1016/S0012-821X(03)00031-1, 2003.
- Chmeleff, J., von Blanckenburg, F., Kossert, K. and Jakob, D.: Determination of the ^{10}Be half-life by multicollector ICP-MS and liquid scintillation counting, *Nucl. Instruments Methods Phys. Res. Sect. B Beam Interact. with Mater. Atoms*, 268(2), 192–199, doi:10.1016/j.nimb.2009.09.012, 2010.
- 500 Cockburn, H. A. P. and Summerfield, M. A.: Geomorphological applications of cosmogenic isotope analysis, *Prog. Phys. Geogr.*, 28(1), 1–42, doi:10.1191/0309133304pp395oa, 2004.
- Desilets, D., Zreda, M. and Prabu, T.: Extended scaling factors for in situ cosmogenic nuclides: New measurements at low latitude, *Earth Planet. Sci. Lett.*, 246(3–4), 265–276, doi:10.1016/j.epsl.2006.03.051, 2006.
- Dunai, T. J.: Influence of secular variation of the geomagnetic field on production rates of in situ produced cosmogenic
505 nuclides, *Earth Planet. Sci. Lett.*, 193(1–2), 197–212, doi:10.1016/S0012-821X(01)00503-9, 2001.
- Ebert, K., Willenbring, J., Norton, K. P., Hall, A. and Hättestrand, C.: Meteoric ^{10}Be concentrations from saprolite and till in northern Sweden: Implications for glacial erosion and age, *Quat. Geochronol.*, 12, 11–22, doi:10.1016/j.quageo.2012.05.005, 2012.
- Frankel, K. L., Brantley, K. S., Dolan, J. F., Finkel, R. C., Klinger, R. E., Knott, J. R., Machette, M. N., Owen, L. A., Phillips,
510 F. M., Slate, J. L. and Wernicke, B. P.: Cosmogenic ^{10}Be and ^{36}Cl geochronology of offset alluvial fans along the northern Death Valley fault zone: Implications for transient strain in the eastern California shear zone, *J. Geophys. Res. Solid Earth*, 112(6), 1–18, doi:10.1029/2006JB004350, 2007.
- Granger, D. E., Lifton, N. A. and Willenbring, J. K.: A cosmic trip: 25 years of cosmogenic nuclides in geology, *Bull. Geol. Soc. Am.*, 125(9–10), 1379–1402, doi:10.1130/B30774.1, 2013.
- 515 Hancock, G. S., Anderson, R. S., Chadwick, O. A. and Finkel, R. C.: Dating fluvial terraces with ^{10}Be and ^{26}Al profiles: Application to the Wind River, Wyoming, *Geomorphology*, 27(1–2), 41–60, doi:10.1016/S0169-555X(98)00089-0, 1999.
- Heisinger, B., Lal, D., Jull, A. J. T., Kubik, P., Ivy-Ochs, S., Knie, K. and Nolte, E.: Production of selected cosmogenic radionuclides by muons: 2. Capture of negative muons, *Earth Planet. Sci. Lett.*, 200(3–4), 357–369, doi:10.1016/S0012-821X(02)00641-6, 2002a.
- 520 Heisinger, B., Lal, D., Jull, A. J. T., Kubik, P., Ivy-Ochs, S., Neumaier, S., Knie, K., Lazarev, V. and Nolte, E.: Production of selected cosmogenic radionuclides by muons 1. Fast muons, *Earth Planet. Sci. Lett.*, 200(3–4), 345–355, doi:10.1016/S0012-821X(02)00640-4, 2002b.
- Hetzl, R., Niedermann, S., Tao, M., Kubik, P. W., Ivy-Ochs, S., Gao, B. and Strecker, M. R.: Low slip rates and long-term preservation of geomorphic features in Central Asia, *Nature*, 417(6887), 428–432, doi:10.1038/417428a, 2002.
- 525 Hidy, A. J., Gosse, J. C., Pederson, J. L., Mattern, J. P. and Finkel, R. C.: A geologically constrained Monte Carlo approach to modeling exposure ages from profiles of cosmogenic nuclides: An example from Lees Ferry, Arizona, *Geochemistry, Geophys. Geosystems*, 11(9), doi:10.1029/2010GC003084, 2010.

- Korschinek, G., Bergmaier, A., Faestermann, T., Gerstmann, U. C., Knie, K., Rugel, G., Wallner, A., Dillmann, I., Dollinger, G., von Gostomski, C. L., Kossert, K., Maiti, M., Poutivtsev, M. and Remmert, A.: A new value for the half-life of ^{10}Be by Heavy-Ion Elastic Recoil Detection and liquid scintillation counting, *Nucl. Instruments Methods Phys. Res. Sect. B Beam Interact. with Mater. Atoms*, 268(2), 187–191, doi:10.1016/j.nimb.2009.09.020, 2010.
- Lal, D.: Cosmic ray labeling of erosion surfaces: in situ nuclide production rates and erosion models, *Earth Planet. Sci. Lett.*, 104(2–4), 424–439, doi:10.1016/0012-821X(91)90220-C, 1991.
- Lal, D. and Arnold, J. R.: Tracing quartz through the environment, *Proc. Indian Acad. Sci. - Earth Planet. Sci.*, 94(1), 1–5, doi:10.1007/BF02863403, 1985.
- Laloy, E., Beerten, K., Vanacker, V., Christl, M., Rogiers, B. and Wouters, L.: Bayesian inversion of a CRN depth profile to infer Quaternary erosion of the northwestern Campine Plateau (NE Belgium), *Earth Surf. Dyn.*, 5(3), 331–345, doi:10.5194/esurf-5-331-2017, 2017.
- Lifton, N. A., Bieber, J. W., Clem, J. M., Duldig, M. L., Evenson, P., Humble, J. E. and Pyle, R.: Addressing solar modulation and long-term uncertainties in scaling secondary cosmic rays for in situ cosmogenic nuclide applications, *Earth Planet. Sci. Lett.*, 239(1–2), 140–161, doi:10.1016/j.epsl.2005.07.001, 2005.
- Marrero, S. M., Phillips, F. M., Borchers, B., Lifton, N., Aumer, R. and Balco, G.: Cosmogenic nuclide systematics and the CRONUScalc program, *Quat. Geochronol.*, 31, 160–187, doi:10.1016/j.quageo.2015.09.005, 2016.
- Mercader, J., Gosse, J. C., Bennett, T., Hidy, A. J. and Rood, D. H.: Cosmogenic nuclide age constraints on Middle Stone Age lithics from Niassa, Mozambique, *Quat. Sci. Rev.*, 47, 116–130, doi:10.1016/j.quascirev.2012.05.018, 2012.
- Repka, J. L., Anderson, R. S. and Finkel, R. C.: Cosmogenic dating of fluvial terraces, Fremont River, Utah, *Earth Planet. Sci. Lett.*, 152(1–4), 59–73, doi:10.1016/s0012-821x(97)00149-0, 1997.
- Rixhon, G., Briant, R. M., Cordier, S., Duval, M., Jones, A. and Scholz, D.: Revealing the pace of river landscape evolution during the Quaternary: recent developments in numerical dating methods, *Quat. Sci. Rev.*, 166, 91–113, doi:10.1016/j.quascirev.2016.08.016, 2017.
- Ruszkiczay-Rüdiger, Z., Braucher, R., Novothny, Á., Csillag, G., Fodor, L., Molnár, G. and Madarász, B.: Tectonic and climatic control on terrace formation: Coupling in situ produced ^{10}Be depth profiles and luminescence approach, Danube River, Hungary, Central Europe, *Quat. Sci. Rev.*, 131, 127–147, doi:10.1016/j.quascirev.2015.10.041, 2016.
- Stone, J. O.: Air pressure and cosmogenic isotope production, *J. Geophys. Res. Solid Earth*, 105(B10), 23753–23759, doi:10.1029/2000JB900181, 2000.
- Wang, Y., Oskin, M. E., Zhang, H., Li, Y., Hu, X. and Lei, J.: Deducing Crustal-Scale Reverse-Fault Geometry and Slip Distribution From Folded River Terraces, Qilian Shan, China, *Tectonics*, 39(1), doi:10.1029/2019TC005901, 2020.