

# Improving age-depth relationships by using the LANDO model ensemble

Gregor Pfalz<sup>1,2,3,4</sup>, Bernhard Diekmann<sup>1,2</sup>, Johann-Christoph Freytag<sup>3,4</sup>, Liudmila Syrykh<sup>5</sup>,  
5 Dmitry A. Subetto<sup>5,6</sup>, Boris K. Biskaborn<sup>1,2</sup>

<sup>1</sup>Alfred Wegener Institute, Helmholtz Centre for Polar and Marine Research, Research Unit Potsdam, Telegrafenberg A45, 14473 Potsdam, Germany

<sup>2</sup>University of Potsdam, Institute of Geosciences, Karl-Liebknecht-Str. 24-25, 14476 Potsdam-Golm, Germany

<sup>3</sup>Einstein Center Digital Future, Robert-Koch-Forum, Wilhelmstraße 67, 10117 Berlin, Germany

10 <sup>4</sup>Humboldt-Universität zu Berlin, Department of Computer Science, Unter den Linden 6, 10099 Berlin, Germany

<sup>5</sup>Herzen State Pedagogical University of Russia, Moyka Emb. 48, St. Petersburg 191186, Russia

<sup>6</sup>Institute for Water and Environmental Problems of the Siberian Branch of the Russian Academy of Sciences, Molodezhnayastr.1, Barnaul 656038, Russia

*Correspondence to:* Gregor Pfalz (Gregor.Pfalz@awi.de), Boris K. Biskaborn (Boris.Biskaborn@awi.de)

## 15 **Abstract**

Age-depth relationships are the key elements in paleoenvironmental studies to place proxy measurements into a temporal context. However, potential influencing factors of the available radiocarbon data and the associated modeling process can cause serious divergences of age-depth relationships from true chronologies, which is particularly challenging for paleolimnological studies in Arctic regions. This paper provides geoscientists with a tool-assisted approach to compare outputs from age-depth modeling systems and to strengthen the robustness of age-depth relationships. We primarily focused on the development of age determination data from a data collection of high latitude lake systems (50° N to 90° N, 55 sediment cores, and a total of 602 dating points). Our approach used five age-depth modeling systems (*Bacon*, *Bchron*, *clam*, *hamstr*, *Undatable*) that we linked through a multi-language Jupyter Notebook called **LANDO** (“**L**inked **a**ge and **d**ePTH modeling”). Within LANDO we have implemented a pipeline from data integration to model comparison to allow users to investigate the outputs of the modeling systems. In this paper, we focused on highlighting three different case studies: comparing multiple modeling systems for one sediment core with a continuously deposited succession of dating points (CS1), for one sediment core with scattered dating points (CS2), and for multiple sediment cores (CS3). For the first case study (CS1), we showed how we facilitate the output data from all modeling systems to create an ensemble age-depth model. In the special case of scattered dating points (CS2), we introduced an adapted method that uses independent proxy data to assess the performance of each modeling system in representing lithological changes. Based on this evaluation, we reproduced the characteristics of an existing age-depth model (Lake Ilirney, EN18208) without removing age determination data. For multiple sediment cores (CS3) we found that when considering the Pleistocene-Holocene transition, the main regime changes in sedimentation rates do not occur synchronously for all lakes. We linked this behavior to the uncertainty within the dating and modeling process, as well as the local variability in catchment settings affecting the accumulation rates of the sediment cores within the collection near the glacial-interglacial transition.

## 1 **Introduction**

40 Lake sediments are important terrestrial archives for recording climate variability in the high latitudes of the Northern Hemisphere (Biskaborn et al., 2016; Smol, 2016; Lehnherr et al., 2018; Subetto et al., 2017; Syrykh et

al., 2021; Diekmann et al., 2017). The identification of age-depth relationships in those lake sediments helps us to put their measured sediment properties in a temporal context (Bradley, 2015; Lowe and Walker, 2014; Blaauw and Heegaard, 2012). We can determine these relationships by directly counting the annual laminated layers (varves) (Brauer, 2004; Zolitschka et al., 2015), or by using indirect age determination methods such as radiocarbon, optically stimulated luminescence (OSL), or lead-cesium (Lead-210/Cesium-137) dating (Lowe and Walker, 2014; Bradley, 2015; Appleby, 2008; Hajdas et al., 2021). Defining a reliable age-depth relationship for paleoenvironmental studies in cold regions is particularly challenging, as varves only exist in rare cases and the determination of ages mostly depends on radiocarbon dating (Strunk et al., 2020 and references therein). Because of primarily financial restrictions, however, only a few selected samples are taken from sediment core sections to determine the corresponding ages of certain depths (Blaauw et al., 2018; Ciarletta et al., 2019; Olsen et al., 2017). We therefore rely on model calculations to define the ages between the samples. In addition to the mathematical challenges that arise when establishing age-depth relationships, the selection of appropriate dating material has an impact on the modeling process.

In the special case of Arctic lake systems, the amount of material for radiocarbon dating, i.e. aquatic/terrestrial macrofossils and organic remains, is extremely low (Abbott and Stafford, 1996; Colman et al., 1996; Strunk et al., 2020). Radiocarbon dating is therefore often based on the organic carbon content in bulk sediment samples, which can be relatively small due to the lower bioproductivity in those lakes (Strunk et al., 2020 and references therein). However, the use of bulk sediments is problematic, as some portions of contributing carbon are not occurring at the same time as the deposition but may reveal inherited ages from reworked older materials (Rudaya et al., 2016; Biskaborn et al., 2013b, 2019; Schleusner et al., 2015; Palagushkina et al., 2017). Several methods are available for pre-treating bulk sediment samples to address sample-based dating uncertainties (Brock et al., 2010; Strunk et al., 2020; Rethemeyer et al., 2019; Bao et al., 2019; Dee et al., 2020). Each pre-treatment method may yield a different result for the same material due to the influence of humic acids, fulvic acids, and humins (Brock et al., 2010; Strunk et al., 2020; Abbott and Stafford, 1996). Similarly, older, inert material incorporated by living organism, known as “reservoir effect” or “hard-water effect”, distorts the actual radiocarbon age by up to  $\pm 10\,000$  years (Ascough et al., 2005; Austin et al., 1995; Lougheed et al., 2016). Such a distortion creates methodological and mathematical errors in the development of age-depth relationships, which possibly leads to a misinterpretation of these relationships.

There are numerous geochronological software systems (from now on simply called modeling systems) available to the geoscientific community, which try to solve the challenges stated above (Trachsel and Telford, 2017; Wright et al., 2017; Lacourse and Gajewski, 2020). Methods have been implemented for detecting outliers, accounting for varying sedimentation rates, or using bootstrapping processes to support the construction of an age-depth model (Parnell et al., 2011; Lougheed and Obrochta, 2019; Bronk Ramsey, 2009, 2008). However, the correct usage of those systems requires a high degree of understanding of the underlying mathematical methods and models. Trachsel and Telford (2017) noted that, despite the users’ impact on the outcome of the model by setting priors and parameters, most users do not have any prior objective insights into appropriately choosing the right parameters. Wright et al. (2017), Trachsel and Telford (2017), and Lacourse and Gajewski (2020) even showed that the results produced by modeling systems could diverge from the true chronology. An in-depth comparison of the results is therefore extremely error-prone. Due to time constraints, users usually only select and apply one

modeling system for paleoenvironmental interpretation. However, comparing multiple modeling systems, despite their inherent differences, offers the benefit of reducing biases towards interpreting of age-depth relationships.

The objective of this paper is to reduce the effort involved in applying different methods for determining age-depth relationships and to make their results comparable. We provide a tool to link five selected modeling systems in a single multi-language Jupyter Notebook. We introduce an ensemble age-depth model that uses uninformed models to create data-driven, semi-informed age-depth relationships. We demonstrate the power of our tool by highlighting three case studies in which we examine our application for individual sediment cores and a collection of multiple sediment cores. Throughout this paper, the term “LANDO” refers to our implementation, which stands for “Linked age and depth modeling”. The current development version of LANDO is accessible via GitHub (<https://github.com/GPawi/LANDO>).

In this paper, we use published age determination data from 55 sediment cores from high latitude lake systems (50° N to 90° N). This unique collection of age determination data allows us to thoroughly test LANDO by examining changes of sedimentation rates over time for various modeling and lake systems. The harmonization of the acquired data follows the conceptual framework described in Pfalz et al. (2021).

## 2 Methods

A key element in our data-science based approach for developing comparable age-depth relationships was to facilitate the use of modeling systems independent from their original proprietary development environment. A multi-language data analysis environment, such as the SoS notebook (Peng et al., 2018) or GraalVM (Niephaus et al., 2019), provides an interface that enables the comparison of modeling systems without being limited to one programming language or environment. Our implementation used the SoS notebook as its backbone. The SoS notebook is a native Python- and JavaScript-based Jupyter Notebook (Kluyver et al., 2016), which extends to other languages through so-called “Jupyter kernels”. We developed our implementation with the focus on four languages and their respective kernels: Python, R, Octave, and MATLAB. This selection allowed us to use the most common modeling systems.

According to Lacourse and Gajewski (2020), the most commonly used modeling systems are *Bacon* (Blaauw and Christen, 2011), *Bchron* (Haslett and Parnell, 2008; Parnell et al., 2008), *OxCal* (Bronk Ramsey, 1995; Bronk Ramsey and Lee, 2013), and *clam* (Blaauw, 2010). We additionally considered the MATLAB/Octave software *Undatable* (Lougheed and Obrochta, 2019), as an alternative to the classical Bayesian approach, and the R package *hamstr* (Dolman, 2022).

In our study, we were able to connect five of the above-mentioned modeling systems in the SoS notebook, namely: *Bacon*, *Bchron*, *clam*, *hamstr*, and *Undatable*. All modeling systems assume a monotonic deposition process, i.e. a positive accumulation rate over the entire core length (Trachsel and Telford, 2017; Lougheed and Obrochta, 2019). Modeling system *clam* uses five different regression-based techniques in combination with a Monte Carlo procedure to repeatedly interpolate between calibrated dates. Because *clam* tries to fit the regression curves to the data, in some cases this can lead to age inversions, which *clam* automatically filters out. (cf. Trachsel and Telford, 2017; Blaauw, 2010)

The modeling procedure of *Undatable* involves a weighted random sampling from both calibrated age and depth uncertainties (expressed as probability density functions) for all dating points and an advanced bootstrapping

120 process over a user-defined number of simulations. The advanced bootstrapping procedure includes removing age  
 125 inversions from the simulation runs as well as inserting connection points between calibrated dates to account for  
 uncertainties in sediment accumulation rates between the dating points. (cf. Lougheed and Obrochta, 2019)

The Bayesian modeling systems *Bacon*, *Bchron*, and *hamstr* subdivide the sediment core into smaller increments  
 for the modeling process but differ in their division technique. *Bacon* separates the core into equal segments, while  
 125 *hamstr* extends *Bacon*'s algorithm by adding additional hierarchical accumulation structures to each segment  
 (Trachsel and Telford, 2017; Dolman, 2022; Blaauw and Christen, 2011). *Bchron* estimates the number of  
 increments between calibrated dates by a compound Poisson-gamma distribution (Trachsel and Telford, 2017;  
 Parnell et al., 2011). For age-depth calculations, *Bacon* uses prior distributions for the accumulation rate (gamma  
 distribution) and autocorrelation memory (beta distribution) between segments, which users can fit with values for  
 130 the mean and shape of these distributions (Blaauw and Christen, 2011). Similarly, *hamstr* relies on user input for  
 the shape of the gamma distribution and values for the memory but estimates the mean value for the accumulation  
 rate from the available age determination data by using a robust linear regression (Dolman, 2022). *Bchron* does  
 not require any specific hyperparameters selection due to its fully automated numerical best-fit approach (Wright  
 et al., 2017; Haslett and Parnell, 2008). All three Bayesian modeling systems use iterations of the Markov chain  
 Monte Carlo (MCMC) algorithm to estimate the calibrated ages and confidence intervals at each depth within the  
 135 sediment core (Dolman, 2022; Blaauw and Christen, 2011; Haslett and Parnell, 2008).

The workflow of LANDO consists of five major components: Input – Preparation – Execution – Result aggregation  
 – Evaluation of model performance.

## 2.1 Input

To work with LANDO users need to provide age determination data, e.g., data from radiocarbon or OSL dating,  
 140 and associated metadata as listed in Table 1. We developed two import options for the users: through a single  
 spreadsheet or a connection to a database. For this study, we used a connection to a PostgreSQL database, which  
 we developed after the conceptual framework as described in Pfalz et al. (2021), via the Python package  
 “SQLAlchemy” (Bayer, 2012). We divided age determination input data into two attribute categories: necessary  
 and recommended. The category “necessary” focused on the prerequisites of the individual modeling systems as  
 145 well as project-related attributes, such as unique identifiers, i.e., “measurementid”, “labid”. However, a larger  
 comprehensive set of descriptive metadata helps a better understanding of the data (Cadena-Vela et al., 2020;  
 Thanos, 2017). We added four additional attributes from the category “recommended” to facilitate the  
 interpretation of age-depth models regarding their age determination data.

**Table 1** – Necessary and recommended attributes for age determination input data, when used with LANDO.  
 150 Attributes apply for both input methods through either a database or a spreadsheet.

Attribute	Description	Data type	Necessary/ Recommended
<i>measurementid</i>	Composite key composed of a unique CoreID, a blank space, and the depth below sediment surface (mid-point cm) with max. two decimal digits of corresponding analytical age measurement - example: “CoreA1 100.5”, when	string	Necessary

<i>users obtained sample of CoreA1 between 100 and 101 cm depth</i>			
<i>thickness</i>	Thickness of the sample slice used for age determination in [cm]	float	Necessary
<i>labid</i>	Unique sample identifier that was provided by the laboratory for age determination	string	Necessary
<i>lab_location</i>	Name of city, where laboratory that conducted the analysis resides	string	Recommended
<i>material_category</i>	One of the eight categories that describes the material best, based on the categories from age-depth modeling system <i>Undatable</i> (Lougheed and Obrochta, 2019)		
	<i>14C marine fossil</i>	<i>tiepoint</i>	string
	<i>14C terrestrial fossil</i>	<i>paleomag</i>	
	<i>14C sediment</i>	<i>U/Th</i>	
	<i>tephra</i>	<i>other</i>	
<i>material_description</i>	Short description of the used material	string	Recommended
<i>material_weight</i>	Weight of analyzed carbon used in radiocarbon dating in [ $\mu\text{gC}$ ]	float	Recommended
<i>age</i>	Uncalibrated radiocarbon age in [uncal yr BP], or non-radiocarbon ages as values in [yr BP] (BP = Before Present (before 1950 CE))	float	Necessary
<i>age_error</i>	Error of the uncalibrated radiocarbon age or non-radiocarbon age in [yr]	float	Necessary
<i>pretreatment_dating</i>	Concise description or abbreviation of sample pre-treatment - <i>example: "ABA", when radiocarbon pre-treatment comprises of an acid-base-acid sequence</i>	string	Recommended
<i>reservoir_age</i>	Additional reservoir effect (also known as hard-water effect or age offset) identified by the user in [yr]; if unknown, then insert 0	float	Necessary
<i>reservoir_error</i>	Error of reservoir age known to the user in [yr]; if unknown, then insert 0	float	Necessary

155 If users decide to use a spreadsheet as input option, then the spreadsheet should follow the same attribution as the database. In addition, we implemented an input prompt for further information, such as the year of core drilling and core length, to ensure comparability to our database implementation. We provide an example spreadsheet with all attributes in the expected format in the repository mentioned in the “Code and data availability” section of this paper.

## 2.2 Preparation

160 The preparation component consisted of two separate steps. First, we checked each age determination dataset, whether a reservoir effect was influencing the radiocarbon data. In the absence of a known reservoir age or recent surface sample, we used available radiocarbon data points and a fast-calculating modeling system to predict the age of the upper most layer within a sediment core. In our approach, we used the *hamstr* package with a default value of 6000 iterations. We then compared the predicted value for the upper most layer with the year of the core retrieval, i.e., our target age. We accounted for an uncertainty in the estimate by allowing an extra 10% error between predicted age and target age. If a gap between predicted and target age is observable, then we assumed a

165 reservoir effect is present. We approximated the reservoir effect by subtracting the target age from the mean  
predicted age, whereas the associated error we based on the two-sigma uncertainty ranges of the prediction.  
LANDO allow users to add the calculated reservoir age and its uncertainty range to the corresponding attributes  
("reservoir\_age" and "reservoir\_error"). Depending on the choice of the user, this addition affects either all  
radiocarbon samples or only bulk sediment samples, or users completely discard the output for the subsequent  
170 modeling process.

As second step in the preparation component, we built a module that automatically changes the format of the  
available data to the individually desired input of each of the five modeling systems implemented in LANDO. We  
primarily used the Python package "pandas" (Reback et al., 2020) for the transformation within the module. We  
transferred the newly transformed age determination data to the corresponding programming language for age-  
175 depth modeling using the built-in "%get" function of SoS notebook.

### 2.3 Execution

We developed LANDO with the specific ability of creating multiple age-depth models for multiple dating series  
from spatially distributed lake systems. Hence, reducing overall computing time was one of our highest priorities.  
We achieved this reduction by applying existing parallelization back-ends for both R and Python, such as  
180 "doParallel" (Microsoft Corporation and Weston, 2020a) and "Dask" (Dask Development Team, 2016),  
respectively. For each modeling system in R, we wrote a separate script that takes advantage of the parallelization  
back-end "doParallel". Besides the individual modeling system packages, we made use of different R libraries,  
such as "tidyverse" (Wickham et al., 2019), "parallel" (R Core Team, 2021), "foreach" (Microsoft Corporation  
and Weston, 2020c), "doRNG" (Gaujoux, 2020), and "doSNOW" (Microsoft Corporation and Weston, 2020b).  
185 We neglected the use of parallelization for the *Undatable* software in MATLAB, since even the sequential  
execution for several sediment cores in our test setup was on the order of a few minutes. However, we achieved  
comparable results with *Undatable* in Octave using the parallelization package "parallel" (Fujiwara et al., 2021).

As mentioned before, the selection of model priors and parameters has an impact on the modeling outcome. This  
is challenging if no objective prior knowledge exist. To lower our impact and to avoid introducing biases in the  
190 modeling process, we used the default values from each modeling system as our own default values (Blaauw et  
al., 2021; Blaauw, 2021; Parnell et al., 2008; Dolman, 2022; Lougheed and Obrochta, 2019). In our adaptation of  
clam, the parameter "poly\_degree" controls the polynomial degree of models for type 2, while the parameter  
"smoothing" controls the degree of smoothing for type 4 and 5. In the original version of clam, users adjust both  
parameters with the single option "smooth" (Blaauw, 2021). Furthermore, the default value for "ssize" within the  
195 original version of Bacon is 2000. We increased this value to 8000 to ensure good MCMC mixing for problematic  
cores, as recommended by Blaauw et al. (2021). In case the user has in-depth knowledge about his sediment core  
and wants to change certain values, we opted for making crucial parameters accessible within the SoS notebook  
outside of the executing scripts. [Table 2](#) provides an overview of all values which users can access and change for  
the individual systems. However, we limited the access to some parameters for operational purposes, such as the  
200 number of iterations or the resolution of the output.

**Table 2** – *Default values for each modeling system, which users can access and change within LANDO.*

Modeling system	Parameter	Default value
<i>Bacon</i>	acc.shape	1.5
	acc.mean	20
	mem.strength	10
	mem.mean	0.5
	ssize	8000
<i>Bchron</i>	<i>not applicable</i>	-
<i>clam</i>	types	1 to 5
	poly_degree	1 to 4
	smoothing	0.1 to 1.0
<i>hamstr</i>	K	c(10,10)
<i>Undatable</i>	xfactor	0.1
	bootpc	30

## 2.4 Result aggregation

After every model run, we received 10000 age estimates (also known as “iterations” or “realizations”) per centimeter from each modeling system for every sediment core. We transferred these results back to Python using the built-in “%put” function of SoS notebook, where in the next module, we calculated per centimeter the median and mean age values as well as one-sigma and two-sigma age ranges. For the summarizing statistics, we used standard Python libraries such as “pandas” (Reback et al., 2020) and “numpy” (Harris et al., 2020). We appended the model name as an attribute to the statistics to allocate each result to its modeling system. In addition, we implemented a module, which helped us to push the aggregated result to our initial database to reuse in follow-up research projects. In a similar approach to the input component, we established the connection to our designed PostgreSQL database via the package “SQLAlchemy” (Bayer, 2012).

Similarly, we used the 10000 age estimates per centimeter for calculating the sedimentation rates. Our calculation used three different approaches to calculate sedimentation rates: “naïve”, “moving average over three depths”, and “moving average over five depths”. Table 3 lists the appropriate equations for each approach. The user can decide which one of the three approaches best applies to the individual sediment record. We summarized the output into the basic summarizing statistics (mean, median, one-sigma ranges, and two sigma ranges) accessible to the users, but added the model name and employed approach as additional attributes. If users use more than one sediment core for sedimentation rate calculation, then LANDO will automatically execute the sedimentation rate calculation in parallel using the “Dask” back-end (Dask Development Team, 2016) and the “joblib” Python package (Joblib Development Team, 2020).

**Table 3** – Approaches to calculate sedimentation rates within LANDO. The value represents the layer of interest within a sediment core for which the calculation is necessary. Both  $x_{i+1}$  and  $x_{i+2}$  are the following layers, while  $x_{i-1}$  and  $x_{i-2}$  are the previous layers. The unit for the resulting sedimentation rate is centimeter per year [cm/yr].

Approach	Equation
----------	----------

---

<i>Naïve (default)</i>	sedimentation rate ( $x_i$ ) = $\frac{\text{depth}(x_i) - \text{depth}(x_{i-1})}{\text{age}(x_i) - \text{age}(x_{i-1})}$
<i>Moving average over three depths</i>	sedimentation rate ( $x_i$ ) = $\frac{\text{depth}(x_{i+1}) - \text{depth}(x_{i-1})}{\text{age}(x_{i+1}) - \text{age}(x_{i-1})}$
<i>Moving average over five depths</i>	sedimentation rate ( $x_i$ ) = $\frac{\text{depth}(x_{i+2}) - \text{depth}(x_{i-2})}{\text{age}(x_{i+2}) - \text{age}(x_{i-2})}$

---

## 2.5 Evaluation of model performance

To evaluate the performance of each modeling system, we looked at three different case studies:

230 Case Study no. 1 - Comparison of multiple modeling systems for one sediment core with a continuously deposited sequence of dating points (“*Continuously deposited sequence*” – CS1)

Case Study no. 2 - Comparison of multiple modeling systems for one sediment core with a disturbed sequence (including inversions) of dating points (“*Inconsistent sequence*” – CS2)

Case Study no. 3 - Comparison of sedimentation rate changes for multiple sediment cores (“*Multiple cores*” – CS3)

235 We examined both sedimentation rate and age-depth modeling results in each of the three case studies. For the first case study, we selected the sediment core EN18218 (Vyse et al., 2021) to showcase the generated output of LANDO. The 6.53 m long sediment record obtained from Lake Rauchvagytgyn, Chukotka (67.78938° N, 168.73352° E, core location water depth: 29.5 m) during an expedition in 2018 consisted of 23 bulk sediment samples used for radiocarbon sampling. The authors determined an existing age offset of  $785 \pm 31$  yr BP (years  
240 Before Present, i.e., before 1950 CE), which we used in our modeling process as well.

As a counterexample, for the second case study we have chosen the sediment core EN18208 (Vyse et al., 2020). During the same expedition to Russia’s Far East in 2018, scientists recovered this EN18208 core from Lake Ilirney, Chukotka (67.34030° N, 168.29567° E, core length: 10.76 m, core location water depth: 19.0 m). The authors based their age-depth model on four OSL dates and 17 radiocarbon dates from bulk sediment samples as well as  
245 an age offset of  $1721 \pm 28$  yr BP. However, in addition to the age offset, we included all seven available OSL and 25 radiocarbon dates for this core in our study.

Both cores are also part of the “*Multiple cores*” case study with a total of 55 sediment cores (Figure 1). More details on each sediment cores are accessible in the corresponding references, which we list in Table 4.

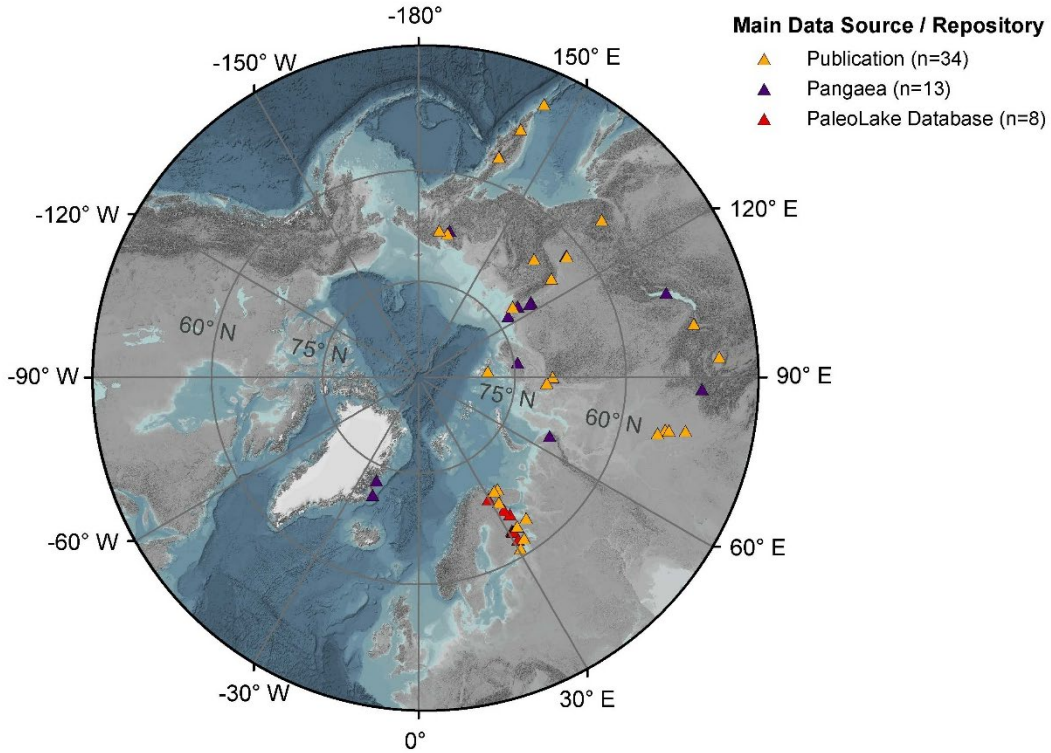
**Table 4** – List of all datasets used in this study. Main data source or repository are either the Pangaea database,  
250 PaleoLake database, or tables within the main body or supplementary material of publications. Data accessible links to the main data source. Paper reference includes citation to the latest version of the corresponding dataset.



<b>CoreID</b>	<b>PaleoLake Database ID</b>	<b>Age-Depth Model Available</b>	<b>Main Data Source / Repository</b>	<b>Data Accessible</b>	<b>Paper Reference</b>
16-KP-04-L19		Yes	Publication	<a href="https://doi.org/10.1111/bor.12521">https://doi.org/10.1111/bor.12521</a>	Andreev et al., 2021
2008-3		Yes	Publication	<a href="https://doi.org/10.1016/j.quascirev.2012.06.002">https://doi.org/10.1016/j.quascirev.2012.06.002</a>	Rudaya et al., 2012
BC2008		No	Publication	<a href="https://doi.org/10.1016/j.rgg.2016.07.005">https://doi.org/10.1016/j.rgg.2016.07.005</a>	Zhdanova et al., 2017
BL02-2007		No	Publication	<a href="https://doi.org/10.1016/j.rgg.2015.05.012">https://doi.org/10.1016/j.rgg.2015.05.012</a>	Khazin et al., 2016
BN2016-1		Yes	Publication	<a href="https://doi.org/10.1177/09596836211019093">https://doi.org/10.1177/09596836211019093</a>	Rudaya et al., 2021
Chupa-8	295	No	PaleoLake DB	<a href="https://clck.ru/N5ksZ">https://clck.ru/N5ksZ</a> -- PALEOLAKE DATABASE ID 295	Kolka et al., 2015
Co1309	76	Yes	Publication	<a href="https://doi.org/10.1111/bor.12379">https://doi.org/10.1111/bor.12379</a>	Gromig et al., 2019
Co1412		Yes	Publication	<a href="https://doi.org/10.1111/bor.12476">https://doi.org/10.1111/bor.12476</a>	Baumer et al., 2021
CON01-603-5		Yes	Pangaea	<a href="https://doi.pangaea.de/10.1594/PANGAEA.856103">https://doi.pangaea.de/10.1594/PANGAEA.856103</a>	Piotrowska et al., 2004
Dolgoe2012	335	No	Publication	<a href="https://doi.org/10.7868/S0435428118020049">https://doi.org/10.7868/S0435428118020049</a>	Kolka et al., 2018
EN18208		Yes	Pangaea	<a href="https://doi.pangaea.de/10.1594/PANGAEA.921228">https://doi.pangaea.de/10.1594/PANGAEA.921228</a>	Vyse et al., 2020
EN18218		Yes	Publication	<a href="https://doi.org/10.5194/bg-18-4791-2021">https://doi.org/10.5194/bg-18-4791-2021</a>	Vyse et al., 2021
ESM-1		Yes	Publication	<a href="https://doi.org/10.1016/j.quascirev.2012.03.004">https://doi.org/10.1016/j.quascirev.2012.03.004</a>	Mackay et al., 2012
KAS-1		No	Publication	<a href="https://doi.org/10.1017/qua.2017.21">https://doi.org/10.1017/qua.2017.21</a>	Lozhkin et al., 2017
Korzhino2010	336	No	PaleoLake DB	<a href="https://clck.ru/N5ksZ">https://clck.ru/N5ksZ</a> -- PALEOLAKE DATABASE ID 336	Syrykh et al., 2021
LENDERY180-4	342	No	PaleoLake DB	<a href="https://clck.ru/N5ksZ">https://clck.ru/N5ksZ</a> -- PALEOLAKE DATABASE ID 342	Shelekhova et al., 2021b
LENDERY192	343	No	PaleoLake DB	<a href="https://clck.ru/N5ksZ">https://clck.ru/N5ksZ</a> -- PALEOLAKE DATABASE ID 343	Shelekhova et al., 2021b

LENDERY200-1	344	No	PaleoLake DB	<a href="https://clck.ru/N5ksZ">https://clck.ru/N5ksZ</a> -- PALEOLAKE DATABASE ID 344	Shelekhova et al., 2021b
LENDERY203-3	345	No	PaleoLake DB	<a href="https://clck.ru/N5ksZ">https://clck.ru/N5ksZ</a> -- PALEOLAKE DATABASE ID 345	Shelekhova et al., 2021b
LOT83-7	321	No	PaleoLake DB	<a href="https://clck.ru/N5ksZ">https://clck.ru/N5ksZ</a> -- PALEOLAKE DATABASE ID 321	Syrykh et al., 2021
LS-9		Yes	Publication	<a href="https://doi.org/10.1016/S0277-3791(00)00120-7">https://doi.org/10.1016/S0277-3791(00)00120-7</a>	Pisaric et al., 2001
Maloye-1		No	Publication	<a href="https://doi.org/10.1017/qua.2017.21">https://doi.org/10.1017/qua.2017.21</a>	Lozhkin et al., 2017
MC2006		No	Publication	<a href="https://doi.org/10.1016/j.rgg.2015.05.012">https://doi.org/10.1016/j.rgg.2015.05.012</a>	Khazin et al., 2016
Muan2018	339	No	PaleoLake DB	<a href="https://clck.ru/N5ksZ">https://clck.ru/N5ksZ</a> -- PALEOLAKE DATABASE ID 339	Shelekhova and Lavrova, 2020
Okun2018	338	No	Publication	<a href="https://doi.org/10.17076/lm1319">https://doi.org/10.17076/lm1319</a>	Shelekhova et al., 2021a
OSIN	110	No	Publication	<a href="https://doi.org/10.17076/lm305">https://doi.org/10.17076/lm305</a>	Tolstobrova et al., 2016
PER3		Yes	Publication	<a href="https://doi.org/10.1007/s10933-015-9858-y">https://doi.org/10.1007/s10933-015-9858-y</a>	Anderson et al., 2015
PG1111		Yes	Publication	<a href="https://doi.org/10.1016/j.quaint.2004.01.032">https://doi.org/10.1016/j.quaint.2004.01.032</a>	Andreev et al., 2004
PG1205		Yes	Pangaea	<a href="https://doi.pangaea.de/10.1594/PANGAEA.734962">https://doi.pangaea.de/10.1594/PANGAEA.734962</a>	Wagner et al., 2000
PG1214		Yes	Pangaea	<a href="https://doi.pangaea.de/10.1594/PANGAEA.734137">https://doi.pangaea.de/10.1594/PANGAEA.734137</a>	Cremer et al., 2001
PG1228		Yes	Pangaea	<a href="https://doi.pangaea.de/10.1594/PANGAEA.726591">https://doi.pangaea.de/10.1594/PANGAEA.726591</a>	Andreev et al., 2003
PG1238		Yes	Publication	<a href="https://doi.org/10.1016/S0277-3791(03)00139-2">https://doi.org/10.1016/S0277-3791(03)00139-2</a>	Raab et al., 2003
PG1341		Yes	Publication	<a href="https://doi.org/10.1101/2021.11.05.465756">https://doi.org/10.1101/2021.11.05.465756</a>	von Hippel et al., 2021
PG1351		Yes	Publication	<a href="https://doi.org/10.1046/j.1365-246X.2002.01625.x">https://doi.org/10.1046/j.1365-246X.2002.01625.x</a>	Nowaczyk et al., 2002
PG1437		Yes	Pangaea	<a href="https://doi.pangaea.de/10.1594/PANGAEA.728450">https://doi.pangaea.de/10.1594/PANGAEA.728450</a>	Andreev et al., 2005

PG1746		Yes	Pangaea	<a href="https://doi.pangaea.de/10.1594/PANGAEA.802677">https://doi.pangaea.de/10.1594/PANGAEA.802677</a>	Nazarova et al., 2013
PG1755		Yes	Publication	<a href="https://doi.org/10.1016/j.uascirev.2010.04.024">https://doi.org/10.1016/j.uascirev.2010.04.024</a>	Müller et al., 2010
PG1756		Yes	Pangaea	<a href="https://doi.pangaea.de/10.1594/PANGAEA.708169">https://doi.pangaea.de/10.1594/PANGAEA.708169</a>	Müller et al., 2009
PG1856		Yes	Publication	<a href="https://doi.org/10.1016/j.oplacha.2015.07.011">https://doi.org/10.1016/j.oplacha.2015.07.011</a>	Hoff et al., 2015
PG1857		Yes	Publication	<a href="https://doi.org/10.1016/j.oplacha.2015.07.011">https://doi.org/10.1016/j.oplacha.2015.07.011</a>	Hoff et al., 2015
PG1858		Yes	Publication	<a href="https://doi.org/10.1007/s10933-012-9580-y">https://doi.org/10.1007/s10933-012-9580-y</a>	Hoff et al., 2012
PG1890		Yes	Publication	<a href="https://doi.org/10.1016/j.oplacha.2015.07.010">https://doi.org/10.1016/j.oplacha.2015.07.010</a>	Dirksen et al., 2015
PG1972		No	Pangaea	<a href="https://doi.pangaea.de/10.1594/PANGAEA.780526">https://doi.pangaea.de/10.1594/PANGAEA.780526</a>	Biskaborn et al., 2013a
PG1975		No	Pangaea	<a href="https://doi.pangaea.de/10.1594/PANGAEA.780385">https://doi.pangaea.de/10.1594/PANGAEA.780385</a>	Biskaborn et al., 2013b
PG1984		Yes	Pangaea	<a href="https://doi.pangaea.de/10.1594/PANGAEA.776407">https://doi.pangaea.de/10.1594/PANGAEA.776407</a>	Biskaborn et al., 2012
PG2023		Yes	Pangaea	<a href="https://doi.pangaea.de/10.1594/PANGAEA.848897">https://doi.pangaea.de/10.1594/PANGAEA.848897</a>	Biskaborn et al., 2016
PG2133		Yes	Publication	<a href="https://doi.org/10.3389/fev.2021.625096">https://doi.org/10.3389/fev.2021.625096</a>	Courtin et al., 2021
PG2201		Yes	Publication	<a href="https://doi.org/10.3389/feart.2021.710257">https://doi.org/10.3389/feart.2021.710257</a>	Hughes-Allen et al., 2021
PG2208		Yes	Publication	<a href="https://doi.org/10.3389/feart.2021.737353">https://doi.org/10.3389/feart.2021.737353</a>	Biskaborn et al., 2021
Tel2006		Yes	Pangaea	<a href="https://doi.pangaea.de/10.1594/PANGAEA.914417">https://doi.pangaea.de/10.1594/PANGAEA.914417</a>	Rudaya et al., 2016
Teriberka17	341	No	Publication	<a href="https://doi.org/10.17076/lim865">https://doi.org/10.17076/lim865</a>	Tolstobrov et al., 2018
TKT-3		Yes	Publication	<a href="https://doi.org/10.1016/j.uaint.2020.05.023">https://doi.org/10.1016/j.uaint.2020.05.023</a>	Lozhkin et al., 2020
TL-1-1		No	Publication	<a href="https://doi.org/10.1191/095968399669823431">https://doi.org/10.1191/095968399669823431</a>	Wolfe et al., 1999
TULOMA27	23	No	Publication	<a href="https://doi.org/10.1016/S0921-8181(01)00118-7">https://doi.org/10.1016/S0921-8181(01)00118-7</a>	Corner et al., 2001
UKhau2015	337	No	Publication	<a href="https://doi.org/10.31857/S0869607121060070">https://doi.org/10.31857/S0869607121060070</a>	Shelekhova et al., 2021c



255 **Figure 1** – Map of geographical distribution of lake sediment cores used for our study (triangles,  $n = 55$ ).  
 Orange triangles ( $n = 34$ ) represent sediment cores for which we obtained age determination data from a  
 related publication. Purple triangles ( $n=13$ ) show datasets we collected from the publicly accessible Pangaea  
 database (Diepenbroek et al., 2002). Red triangles ( $n = 8$ ) indicate referenced datasets provided by the  
 PaleoLake Database (Syrykh et al., 2021). ArcGIS Basemap: GEBCO Grid 2014 modified by AWI. The outer  
 260 ring in the graphic corresponds to 45° N.

### 2.5.1 Numerical combination of model outputs

To introduce the ensemble model in LANDO, we combined the outputs from all five modeling systems into one composite model. We considered the outermost limits (min. and max. values) of all confidence intervals (one-sigma or two-sigma) as our boundary for the ensemble model. By taking these outermost limits into account, we  
 265 artificially increased the area of uncertainty covered by the ensemble model, but we made sure that we were representing all possible outcomes and maximizing the likelihood of including the true chronology. We also included a weighted average ( $\bar{x}$ ) of the age estimates and sedimentation rates, which we calculated using the following equations:

$$\bar{x} = \sum_{k=1}^m \frac{n_k}{n} * \bar{x}_k \quad (\text{Eq. 1})$$

270 
$$n = \sum_{k=1}^m n_k \quad (\text{Eq. 2})$$

with  $m$  being the number of participating modeling systems,  $n$  as the total number of iterations as well as  $\bar{x}_k$  and  $n_k$  representing the median value (either for age estimate or sedimentation rate) and the associated number of

iterations from each modeling system, respectively. In some cases, the weights from each modeling system are equal, as they produce the same number of iterations. Then we can simplify Eq. 1 to represent the arithmetic mean:

275 
$$\bar{x} = \frac{1}{m} \sum_{k=1}^m \bar{x}_k \quad (\text{Eq. 3})$$

For our “*Multiple cores*” case study (CS3), we additionally had to ensure comparability of sedimentation rates between sediment cores, since each model assigns a different age value to its sedimentation rate value per centimeter. Therefore, we binned sedimentation rate results into 1000-year bins for each age-depth model as well as the ensemble model and calculated the weighted averages and their confidence intervals within these bins.  
280 Inside LANDO, users can change the initial bin size of 1000 years to the desired resolution.

### 2.5.2 Detection and filtering of unreasonable models

For cases in which age-depth models do not agree with each other, e.g., “*Inconsistent sequence*” case study (CS2), we have built in the option of importing data from measured sediment properties, also known as proxies. Because of compositional and density variations of deposits, changes in sedimentation rates imply changes in the deposition  
285 of proxies (Baud et al., 2021; Biskaborn et al., 2021; Vyse et al., 2021). By including appropriate, independent proxy data on lithological changes within the sediment core, we can weight each model based on its performance to represent these variations in sedimentation rate. Users should provide the independent sediment proxy data as file with two columns, namely “compositedepth” which should be the measurement depths (as mid-point centimeter below sediment surface), and “value” representing the values of the proxy. This simplification makes  
290 it possible to import different available proxies or statistical representations of proxy data, i.e., results from ordination techniques (PCA, MDS, etc.), into the optimization process and to visualize the behavior of the age-depth models in comparison to these proxies.

In order to evaluate the performance, we adapted the fuzzy change point approach by Hollaway et al. (2021) to work with our input data and desired outcome on a depth-dependent scale instead of a time series. Similarly to  
295 Hollaway et al. (2021), our approach firstly detected change points within the proxy data and each modeling system output by fitting an ARIMA model to the data and then extracted change points by using the “change point” R package (Killick and Eckley, 2014; Killick et al., 2016) on the residuals of the ARIMA model. If we found no change points in the proxy data via this approach, we applied the “change point” R package on the raw independent sediment proxy data instead. Through the additional bootstrapping process introduced by Hollaway et al. (2021),  
300 we were able to set up confidence intervals for the extracted change points. Subsequently, we searched for the intersection between the change points plus their confidence interval for each age-depth model with the independent proxy data. After converting the change points for both age-depth model and independent proxy data into triangular fuzzy numbers, we obtained similarity scores using the Jaccard similarity score of the fuzzy number pairs as described in Hollaway et al. (2021). The similarity score can reach numbers between zero (no match) and  
305 one (perfect match). However, the threshold of excluding an age-depth model from the generated combined model depends on the imported proxy data and number of detected change points. Therefore, the user can set the threshold accordingly to their proxy within LANDO, but we have implemented the default value for this threshold to 0.1, which corresponds to an overlap of 10% of the change points between model and proxy data.

In addition to the criterion of preparing the proxy data in the format of “depth vs. value” in a separate file, we suggest using a proxy with a high resolution. As a high-resolution proxy, we define a proxy with more than 50 measurements per meter of core length. For our “*Inconsistent sequence*” case study (CS2), we used high-resolution elemental proxy data from XRF (X-ray fluorescence) measurement as our independent proxy data. As our evaluation element to optimize the age-depth models, we selected zircon (“Zr”), which itself is an indicator for minerogenic/detrital input (Vyse et al., 2020 and references therein). The zircon proxy data of EN18208 has a resolution of 200 measurements per meter of core length.

To achieve a realistic comparison between sediment cores in the “*Multiple cores*” case study (CS3), we looked at the individual age-depth model outputs for each sediment core to determine whether an optimization step was required. We have only selected sediment cores with a published age-depth model (n = 33) so that we can refer to lithological boundaries from the original publication. During the analysis, we saw that nine sediment cores needed to be optimized due to strong inconsistencies between models over the entire length of each core. In twelve cases, where models within the lower section of the cores did not match, we considered proxy-based optimization to improve the model outcome when high-resolution data was available.

### 2.5.3 Display of models

To display the results from age-depth modeling and sedimentation rate calculation, we decided to create our own plots, instead of reusing the plots from each individual modeling system. Our plot header contains the unique CoreID; additionally, the header indicates whether the user decided to apply a reservoir correction on the radiocarbon data or not. Our single core plots consist of two main panels: On the left-hand side, the panel shows the results from the age-depth modeling process with the calibrated ages (in calibrated years Before Present, i.e., before 1950 CE) on the x-axis and the composite depth of the sediment core (in centimeter) on the inverted y-axis. On the right-hand side, the panel displays the result from the sedimentation rate calculation (in cm/yr, centimeter per year) on the x-axis plotted against the same composite depth on the inverted y-axis. For better readability of the strong variability of sedimentation rate, we used the log scale for the x-axis of the right panel. Generally, LANDO draws the ensemble age-depth model and sedimentation rate in grey with the weighted average as dashed line.

For all models, LANDO will display the median values for age and sedimentation rate as solid lines. Both panels further display the corresponding one-sigma range and two-sigma range per centimeter for each model. Depending on the user’s selection, users can plot both sigma ranges, only one of the two sigma ranges, or just the median ages. To include age determination data within the plots, LANDO internally calibrates the radiocarbon data with the “BchronCalibrate” function of the *Bchron* package (Haslett and Parnell, 2008; Parnell et al., 2008) with either the IntCal20 (Reimer et al., 2020), Marine20 (Heaton et al., 2020), or SHCal20 (Hogg et al., 2020) calibration curve. This allows users to analyze samples from locations other than the terrestrial northern hemisphere. By default, the left panel contains each age data point as a predefined symbol with its one-sigma uncertainty as error bar. The symbol used by LANDO depends on the material category defined in the input file for each dating point.

If users decide to filter out unreasonable age-depth models, similar to “*Inconsistent sequence*” case study (CS2), we added the option to plot the independent proxy data and therefrom derived lithology as an additional panel on the left-hand side for a better interpretability. Further, LANDO highlights the boundaries of lithological change

and its confidence interval in both sedimentation rate and age-depth model plots. The optimized plot includes a goodness-of-fit for each involved modeling system to represent the change points at the bottom of the plot.

When using LANDO for multiple sediment cores, the overall plot holds for each sediment core the results from the binned weighted average sedimentation rate calculation (as median sedimentation rate in cm/yr, centimeter per year) against the selected age bins (in calibrated years Before Present, i.e., before 1950 CE) for each modeling system. This visual illustration allows user to compare multiple sediment cores based on the time axis.

For people with color vision deficiency, we incorporated the extra option to plot the resulting age-depth plots with different line styles and textures to support the visual differentiation between each model. Figure S4 in the supplementary material shows the color-blind friendly output created by LANDO. With LANDO we want to support inclusivity in science, but we look forward to feedback from the community on how we can improve LANDO in this regard.

## 2.6 Further analysis – Sedimentation rate development over time

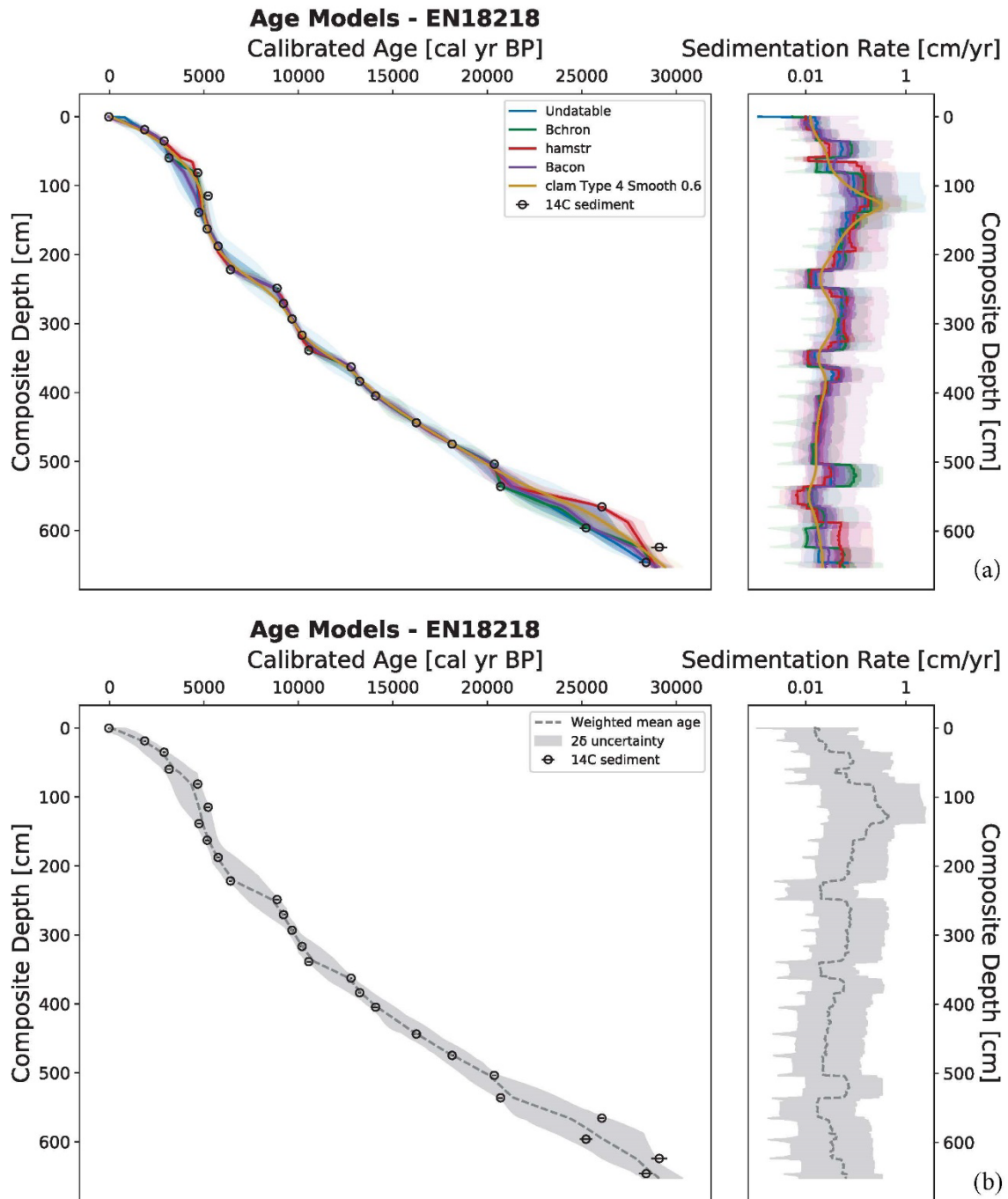
To identify similar temporal shifts in sedimentation regimes in our case study “Multiple cores” (CS3), we examined our data collection of 55 sediment cores regarding a general tendency in sedimentation rate shifts. First, we considered the 11 700-yr BP (Before Present, i.e., before 1950 CE) boundary as our marker for the change between Holocene and Late Pleistocene to separate the datasets (Rasmussen et al., 2006; Lowe and Walker, 2014; Walker et al., 2008). We selected this marker because numerous studies suggest a general difference in sedimentation regimes between these periods (e.g., Baumer et al., 2021; Bjune et al., 2021; Kublitskiy et al., 2020; Müller et al., 2009; Wolfe, 1996; Vyse et al., 2021). As some of the models were below the 11 700-yr BP marker, the calculation of the mean sedimentation rate for the Late Pleistocene featured only a subset of sediment cores (total number of sediment cores with measurement in Late Pleistocene: 20). Then, for each age model of the sediment cores in the subset, we used the two-sigma ranges around 11 700 yr BP to determine whether the maximum absolute change occurred exactly at 11 700 yr BP or around our set marker. For this investigation, we changed the bin size to 100-year bins to allow comparison between each modeling system and the combined models. Using maximum from the interquartile ranges of the two-sigma ranges for each model (see supplementary material Figure S3), we defined the observation period from 8700 to 14 700 yr BP (corresponds to a range of  $\pm$  3000 years). We then checked the data within the time span to see where the maximum change in sedimentation rate occurred. If the calculated age for the new marker was at the edge of our time span, we iteratively increased the outer limit by 100 years (up to a maximum of 18 000 yr BP) to see if the calculated age still reflected the maximum absolute change. We then used the newly defined marker to calculate the mean sedimentation rate for before and after the marker.

## 3 Results

### 3.1 “Continuously deposited sequence” – Case Study no. 1

All five age-depth models were able to produce an age-depth relationship for sediment core EN18218 (“Lake Rauchuvagytygn”) with only small diversions in between some of the calibrated ages. Figure 2 depicts the two

visual outputs produced by LANDO. Panel (a) displays all models side by side, while panel (b) shows the combined output from all models.



385

**Figure 2** – Generated output from LANDO for sediment core EN18218 ( $^{14}\text{C}$  data from Vyse et al., 2021) as an example of continuous lacustrine sedimentation over time. Panel (a) consists of a comparison between age-depth models from all five implemented modeling systems (left plot) and their calculated sedimentation rate (right plot). Colored solid lines indicate both the median age and median sedimentation rate for all models, while shaded areas represent their respective one-sigma and two-sigma ranges in the same colors with decreasing opacities. Panel (b) shows the ensemble age-depth model (left plot) and its sedimentation rate (right plot). The dashed line in panel (b) represents the weighted average age estimates (left plot) and the weighted average

390



395 *sedimentation rates (right plot) for the ensemble model, while the grey area represents the two-sigma*  
*uncertainty, i.e., the outermost limits of two-sigma ranges from all models. Both plots on the left of (a) and (b)*  
*show the depth below sediment surface on the inverted y-axis as composite depth of the sediment core in*  
*centimeter (cm) and the calibrated ages on the x-axis in calibrated years Before Present (cal. yr BP, i.e., before*  
*1950 CE). Black circles within (a) and (b) indicate the calibrated <sup>14</sup>C bulk sediment samples with their mean*  
*calibrated age using the IntCal20 calibration curve (Reimer et al., 2020) and their one-sigma uncertainty as*  
*error bars. The plots on the right display the sedimentation rate in centimeter per year (cm/yr, x-axis as log-*  
400 *scale) against the depth below sediment surface as the composite depth of the sediment core in centimeter (cm,*  
*inverted y-axis).*

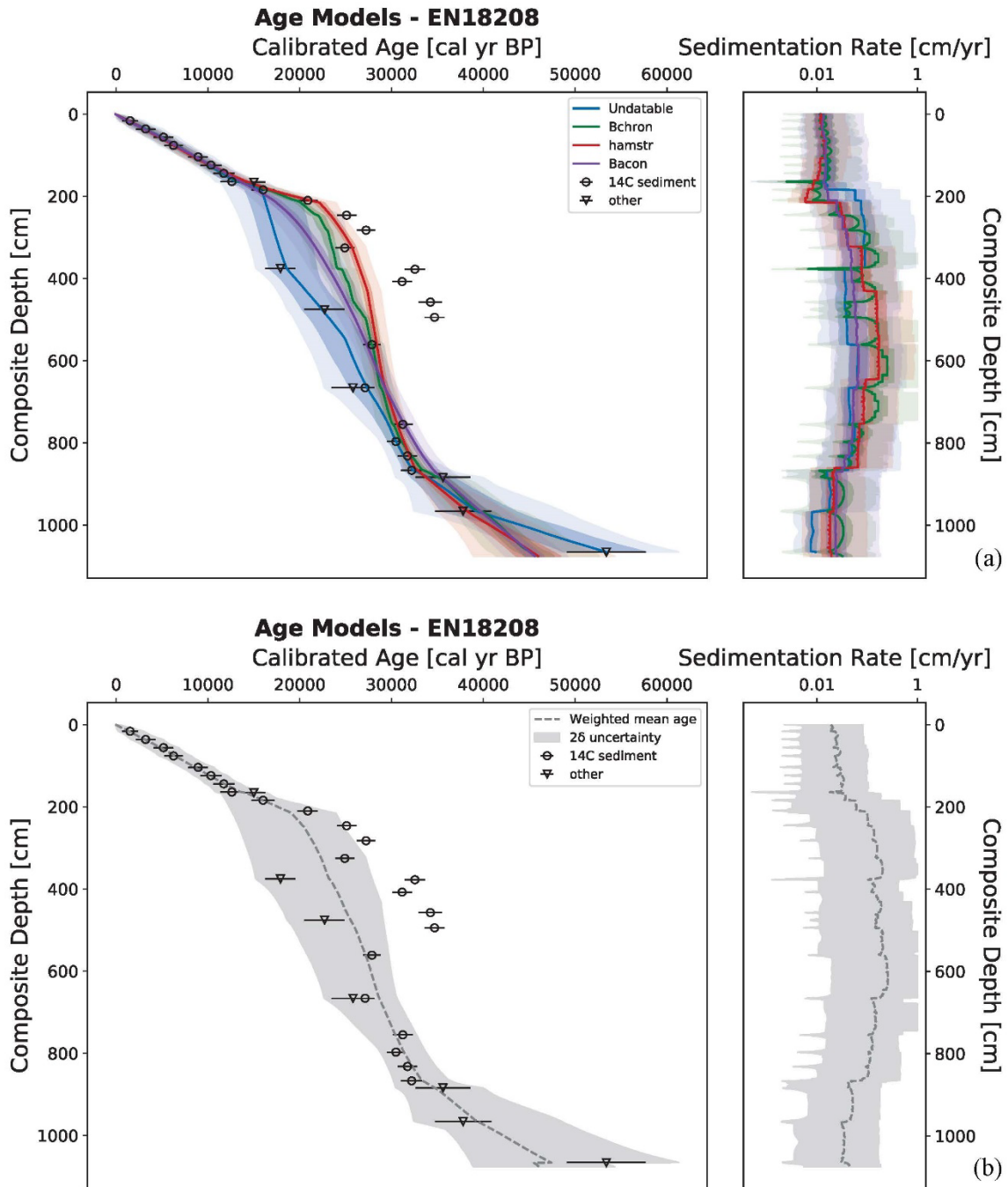
All models revealed highest sedimentation rates for the interval between 108 cm and 133 cm. Mean values ranged  
from 0.242 cm/yr (*hamstr*) to 0.764 cm/yr (*clam*) within this interval, whereas the median sedimentation rate varied  
between 0.107 cm/yr (*Bacon*) and 0.314 cm/yr (*clam*). In the lower segment of EN18218 (653 cm to 504 cm), the  
405 models showed a stronger disagreement among each other with larger varying mean and median values for  
sedimentation rate. In three instances, the majority of models noticeable dropped to lower sedimentation rate  
values. We found the first two declines in sedimentation rate between 366 cm and 339 cm as well as between 249  
cm and 222 cm with median sedimentation rates from 0.012 cm/yr (*hamstr*) to 0.027 cm/yr (*Bacon*) and from  
0.013 cm/yr (*hamstr*) to 0.025 cm/yr (*Bacon*), respectively. The last significant downward shift occurred between  
410 66 cm and 57 cm, where *hamstr* decreased the median sedimentation rate tenfold from 0.15 to 0.015 cm/yr between  
66 cm and 64 cm.

In our ensemble model, we found the highest value for weighted average sedimentation rate at 128 cm with 0.4483  
cm/yr (two-sigma range: 0.032 - 2.338 cm/yr), which corresponded to weighted average age estimate of 4846 cal  
yr BP (two-sigma range: 4301 - 5384 cal yr BP). Throughout the core, the cumulative two-sigma uncertainty of  
415 the ensemble model ranged from 0.002 cm/yr to 2.486 cm/yr.

### 3.2 “Inconsistent sequence” – Case Study no. 2

For the second case study, we considered an example where the underlying age determination data within the core  
are very contradictory to each other (see [Figure 3](#)). Before considering modeling such an age-depth relationship  
with conflicting data, users need to investigate and try to understand the reasons for any outliers. Fitting any age-  
420 depth model, including the LANDO ensemble, to such divergent data should be done with extreme caution and  
we do not recommend doing so without further deliberate investigation. Here we primarily aim to illustrate the  
range of age-depth models obtained within the ensemble as well as the results of the optimization with our proxy-  
based lithology.

During the standard modeling procedure with LANDO, four out of five modeling systems produced an output for  
425 sediment core EN18208 (“Lake Ilirney”). The modeling system *clam* was unable to produce an age-depth model  
for this core. [Figure 3](#) shows the visual outputs with all models in panel (a) and the combined model in panel (b).  
[Figure 4](#) consists of three panels showing the results from the proxy-based optimization process using zircon (Zr).  
Panel (a) shows the visual output from the optimization process, while panel (b) and (c) illustrate the optimized  
age-depth model with the highest matching score and the resulting ensemble model, respectively.



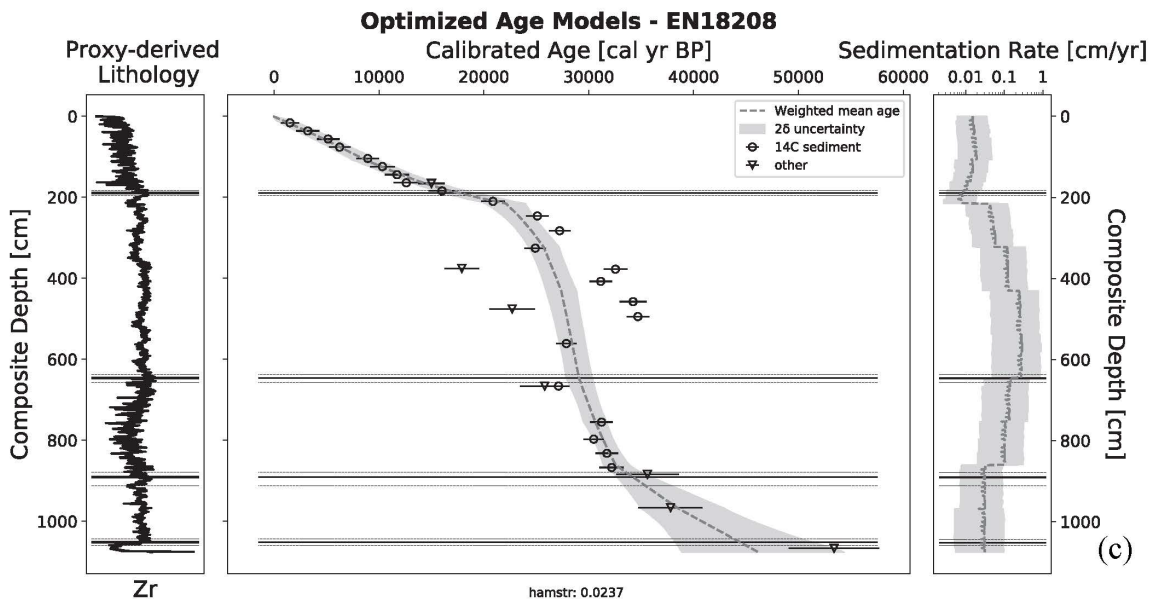
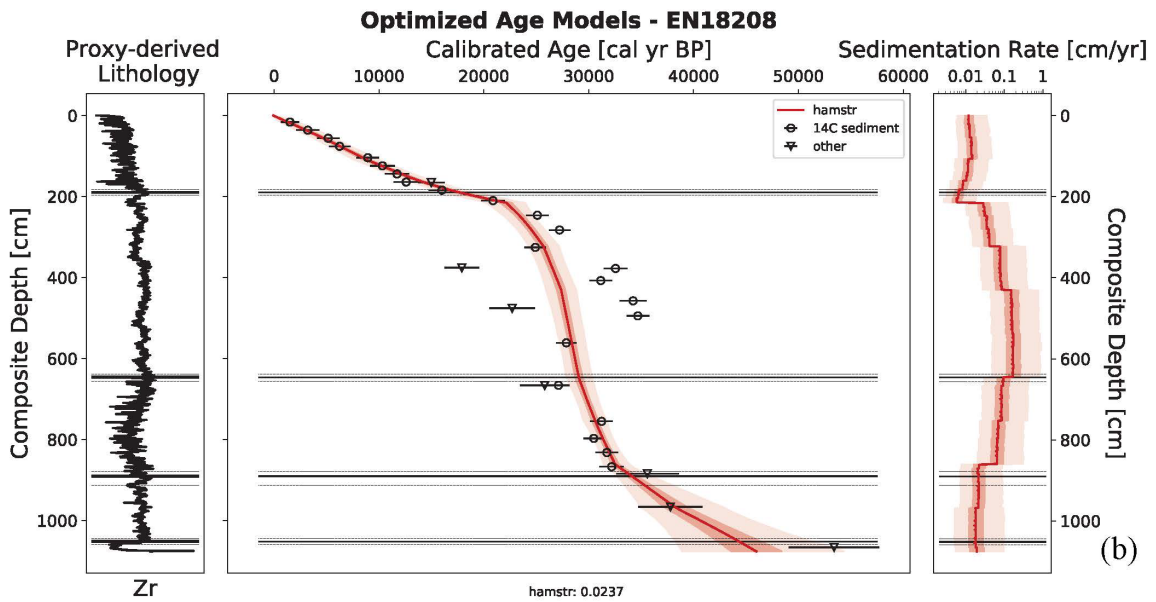
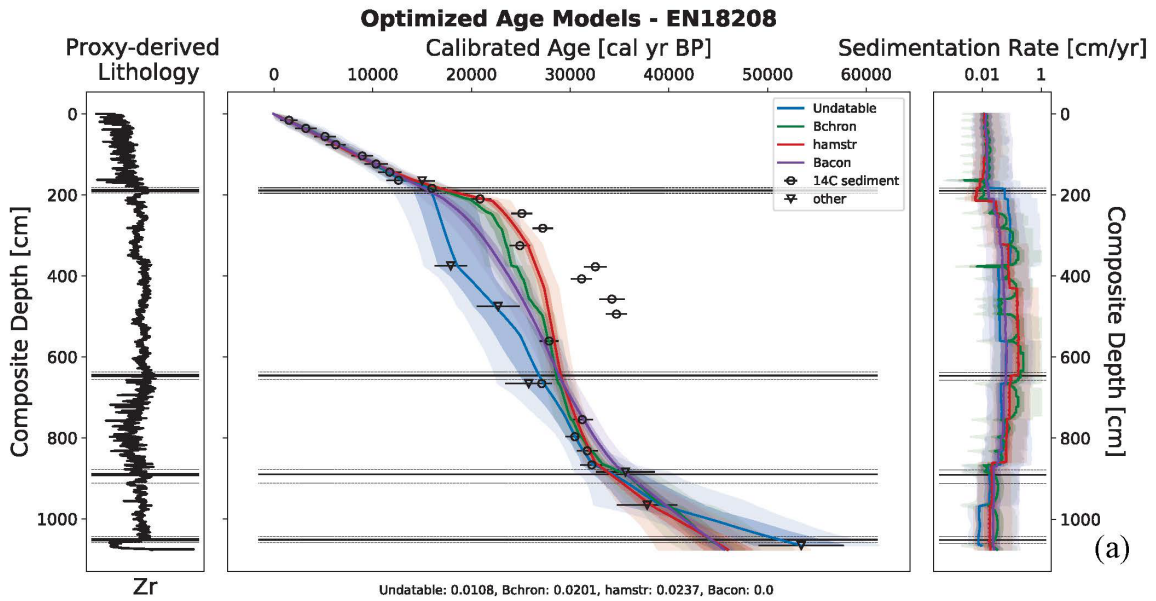
430

**Figure 3** – Generated output from LANDO for sediment core EN18218 (OSL and  $^{14}\text{C}$  data from Vyse et al., 2020) as an example of discontinuous lacustrine sedimentation. Panel (a) consists of a comparison between age-depth models from four out of five implemented modeling systems (left plot) and their calculated sedimentation rate (right plot). The modeling system clam was unable to produce an age-depth model for this core. Colored solid lines indicate both the median age and median sedimentation rate for all four models, while shaded areas represent their respective one-sigma and two-sigma ranges in the same colors with decreasing opacities. Panel (b) shows the ensemble age-depth model (left plot) and its sedimentation rate (right plot). The dashed line in panel (b) represents the weighted average age estimates (left plot) and the weighted average sedimentation rates (right plot) for the ensemble model, while the grey area represents the two-sigma uncertainty, i.e., the outermost limit of two-sigma ranges from all four models. Both plots on the left of (a) and (b) show the depth below

440

445 *sediment surface on the inverted y-axis as composite depth of the sediment core in centimeter (cm) and the calibrated ages on the x-axis in calibrated years Before Present (cal. yr BP, i.e., before 1950 CE). Black circles within (a) and (b) indicate the calibrated <sup>14</sup>C bulk sediment samples with their mean calibrated age using the IntCal20 calibration curve (Reimer et al., 2020) and their one-sigma uncertainty as error bars. Black down-pointing triangles show mean ages from OSL analysis and their one-sigma uncertainty as error bars. The plots on the right display the sedimentation rate in centimeter per year (cm/yr, x-axis as log-scale) against the depth below sediment surface as the composite depth of the sediment core in centimeter (cm, inverted y-axis).*

450 While *Undatable* was the only modeling system that considered the dating point at 1066 cm before following the next dating point at 966 cm, all remaining three modeling systems assumed a steady accumulation (mean sedimentation rate: 0.0575 cm/yr) from 1076 cm before overlapping their paths with *Undatable*. At the depth of 795 cm, we found the next divergence between the age-depth models. *Undatable* followed the younger OSL dates and the young radiocarbon date at 666 cm. *Bacon*, *Bchron*, and *hamstr* continued with the radiocarbon date at 561 cm, before taking different paths until age determination point at 184 cm. All modeling systems again overlapped their paths from 184 cm to the sediment surface with a mean sedimentation rate of 0.0277 cm/yr.



**Figure 4** – Optimized visual output for EN18208 (OSL and  $^{14}\text{C}$  data from Vyse et al., 2020). We used high-resolution X-ray fluorescence (XRF) measurements of zircon (Zr) as independent proxy to evaluate model performance to represent lithological changes. Panel (a) extends the existing panel (a) of Figure 3 by adding a plot on the left to show the proxy-derived lithology used to filter unreasonable models. This added plot consists of the proxy measurements of Zr (in counts per second) along the depth below sediment surface as the composite depth of the sediment core in centimeter (cm) and the derived lithological boundaries (solid horizontal lines) plus their uncertainty range (dashed horizontal lines). Both age-depth model and sedimentation rate plot contain the same lithological boundaries as visual aid. The text box in the bottom middle lists the models with their matching score related to the proxy-derived lithology. Panel (b) shows the model (*hamstr*) with the highest matching score (0.0237). Panel (c) depicts our ensemble model based on this model. The age-depth models displayed in panel (b) and (c) show strong similarities with the age-depth model developed by Vyse et al. (2020).

During the optimization process, our adapted algorithm located four lithological boundaries with its uncertainty range from the independent proxy data: 189.5 cm (182 – 192.5 cm), 646 cm (638 – 657 cm), 890.5 cm (874 – 912 cm), and 1051.5 cm (1043 – 1061.5 cm). We found the highest matching score from the optimization for *hamstr* (Score: 0.0237). Table 5 shows the average sedimentation rate for each proxy-derived lithological unit (PLU) of the ensemble model of EN18208.

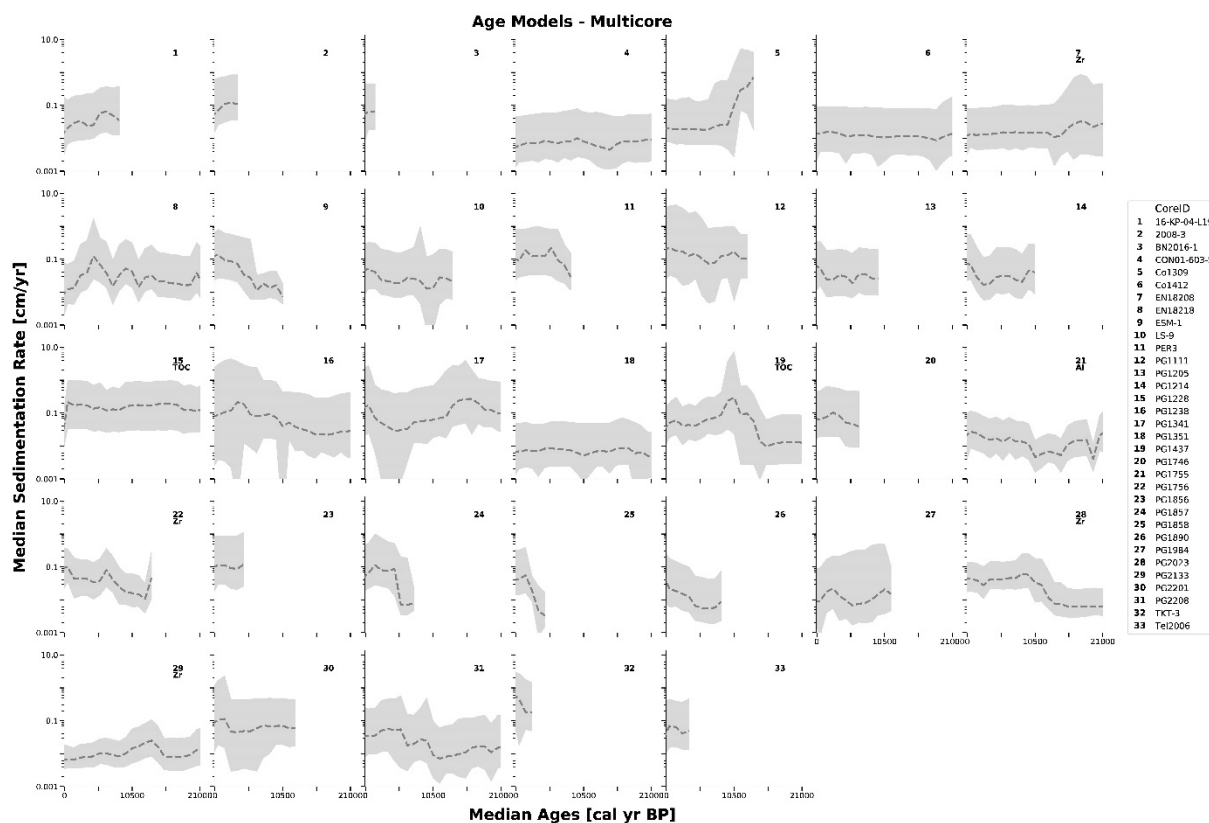
**Table 5** – Average sedimentation rate of EN18208 divided into proxy-derived lithological units. The calibrated mean model range indicates the mean age estimates of the ensemble model for the corresponding depths of the proxy-derived lithological unit (PLU).

Proxy-derived lithological unit	Corresponding depths below sediment surface [cm]	Calibrated mean model range [cal yr BP]	Average sedimentation rate [cm/yr]
PLU1	0 – 190	-67 – 17752	0.0152
PLU2	190 – 646	17752 – 29073	0.1664
PLU3	646 – 891	29073 – 34244	0.1073
PLU4	891 – 1052	34244 – 44499	0.0307

### 3.3 “Multiple cores” – Case Study no. 3

In contrast to the previous case studies, this case study focused on understanding the development of sedimentation rates over time, with the emphasis on the transition from the Holocene to the Pleistocene. We used age determination data from 33 sediment cores with a published age-depth model to show the standard output of LANDO for multiple sediment cores, while using all datasets for the subsequent BP analyses. Figure 5 shows the ensemble models with weighted average sedimentation rates binned into 1000-year bins from our multi-core investigation with 33 published sediment cores (see Figure S1 for the individual models in the supplementary material). We set the boundaries from 0 to 21 000 cal yr BP within these figures to cover the time span from the present to the Last Glacial Maximum (LGM) (Clark et al., 2009). Below the number for each core in Figure 5 are the proxies used for their optimization. In 17 out of 55 cases within our entire collection, the ensemble model was based on four out of five models, as neither *clam* or *Undatable* was able to find a suitable age-depth model (for more details, please see Table S1 in the supplementary material). The maximum time span covered by the sediment cores varied between 2000 yr BP (CoreID: PG1972) and 320 000 yr BP (CoreID: PG1351). The average non-

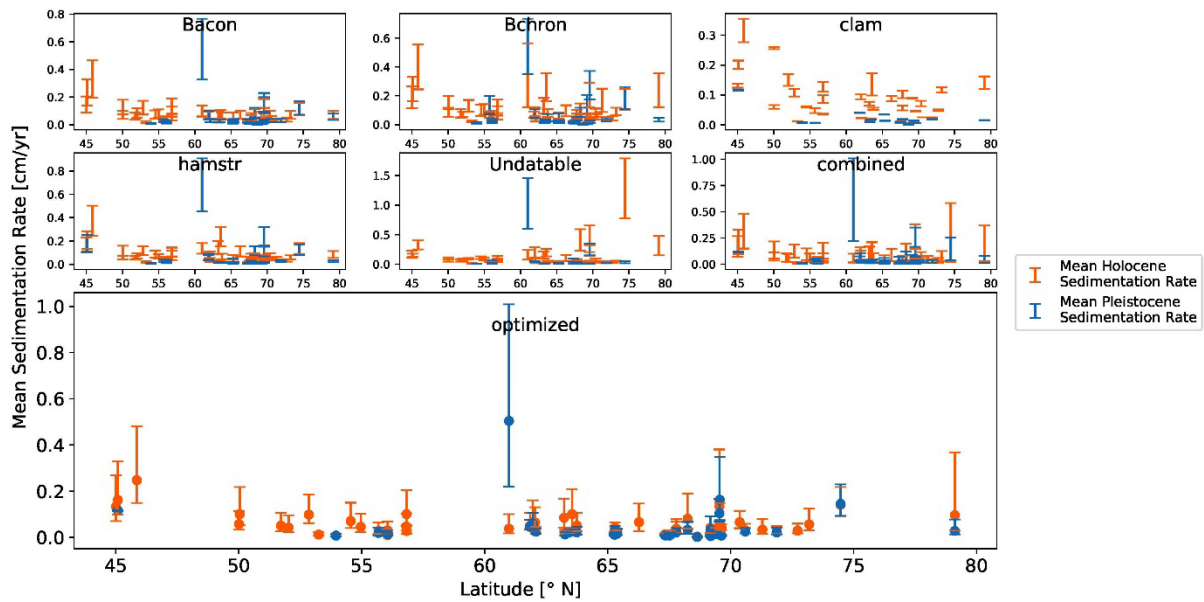
490 optimized sedimentation rate ranged between 0.004 cm/yr (CoreID: LOT83-7) and 1.142 cm/yr (CoreID: PG1228). In total, we optimized seven sediment cores, as in most cases neither high-resolution data was available nor the provided proxy data represented a lithological proxy when crosschecked with the original publication. From these seven sediment cores, we reconstructed the proxy-based lithology twice with TOC as a low-resolution proxy (CoreID: PG1228 & PG1437).



495 **Figure 5** – Optimized combined models for 33 sediment cores with a published age-depth model displayed as weighted average sedimentation rate (in centimeter per year, cm/yr – y-axis) binned into 1000-year bins (in calibrated years Before Present, cal. yr BP, i.e. before 1950 CE – x-axis) for the last 21 000 years. Dashed line represents the weighted average sedimentation rate, whereas the grey areas are the respective two-sigma ranges. Each grid cell contains the unique core identifier of each involved sediment core. In seven cases, the  
500 letters below each number give the name of the independent proxy used for optimization process.

To visualize the difference in sedimentation rates between two neighboring and fundamentally different environmental settings, i.e. Pleistocene glacial and Holocene interglacial, we used the datasets that were split at the Holocene-Pleistocene boundary at 11 700 yr BP. **Figure 6** shows the mean sedimentation rate for Holocene and Late Pleistocene for each model with its one-sigma uncertainty. **Figure S3** in the supplementary material gives an overview over the overall uncertainty for all models. Among all models, *clam* models have the lowest range on average for both Holocene (0.0135 cm/yr) and Late Pleistocene (0.0011 cm/yr), while the combined models show the greatest uncertainty on average in the Holocene (0.0942 cm/yr) and for the Late Pleistocene (0.0711 cm/yr). The sediment core PG1228 (latitude: 74.473° N) showed the highest individual sedimentation rate for the Holocene in *Undatable* (median sedimentation rate: 1.1013 cm/yr). We observed a significant reduction of about 77 % for the optimized model of the same core (0.1264 cm/yr), compared to its combined model (0.5615 cm/yr).  
510

## Holocene-Pleistocene Sedimentation Rate with 11700 year BP boundary



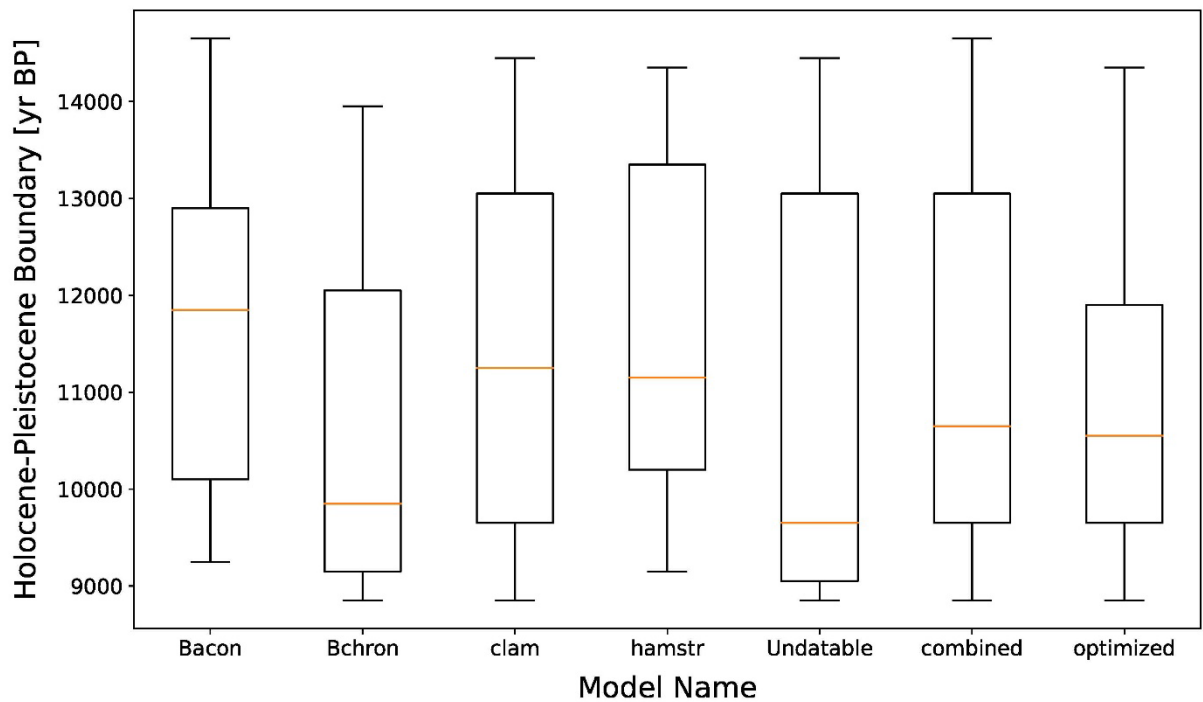
**Figure 6** – Average sedimentation rate in centimeter per year (cm/yr) for each sediment core in our data collection of 55 sediment cores divided into Holocene dataset (from present to 11 700 yr BP, orange lines) and Late Pleistocene dataset (from 11 700 yr BP to 21 000 yr BP, blue lines). Each plot displays the one-sigma range of sedimentation rate within each dataset for each model and sediment core. In addition, filled circles represent the mean value for the optimized models.

515

For our data compilation, we found the largest absolute change in sedimentation rates within the modeling systems on average between 9600 and 11 900 yr BP (Figure 7). For our combined and optimized models, however, the largest change averaged between 10 500 yr BP and 10 700 yr BP. Still, all sediment cores covered the entire range of our initial time span from 8700 to 14 700 yr BP within the models. Using the results of the largest change in sedimentation rate for each sediment core and model as new markers, we again split the datasets into two separate datasets. One dataset contained mostly Holocene sedimentation rate values (Holocene dataset), while the other contained mostly Late Pleistocene values (Late Pleistocene dataset). Therefore, the initial display (Figure 6) changed slightly to Figure 8. Most notable was the increase in total number of sediment cores in Late Pleistocene dataset with an individual separation ( $n = 38$ ) compared to the Late Pleistocene dataset with the separation at 11 700 yr BP ( $n = 19$ ).

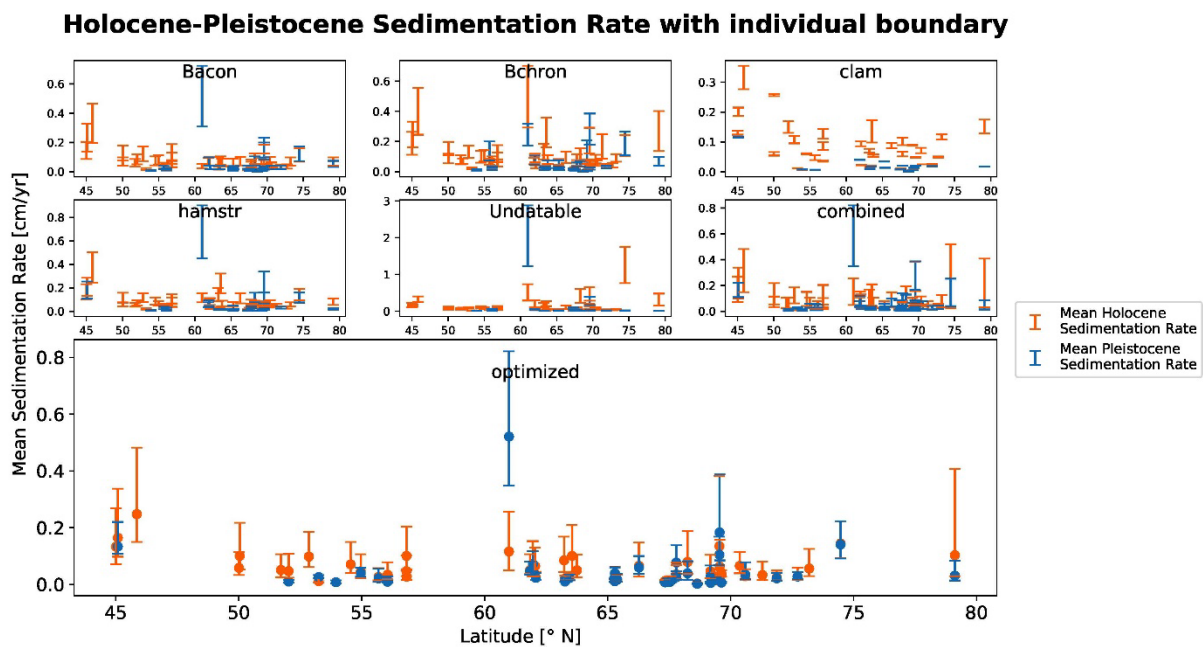
520

525



**Figure 7** – Boxplot representing the years with the biggest absolute change in sedimentation rate for our data collection of 55 sediment cores. Sedimentation rate results from each model binned into 100-year bins to allow comparisons between the modeling systems. The initial observation time span covers 8700 to 14 700 yr BP. The orange line corresponds to the median value for each model.

530



**Figure 8** – Average sedimentation rate in centimeter per year (cm/yr) for each sediment core in our data collection of 55 sediment cores divided into Holocene dataset (orange lines) and Late Pleistocene dataset (blue lines). The exact value for the split of the datasets for each individual core and each model depends on the results of the maximum change in sedimentation rate within the observation period 8700 to 14 700 yr BP. Each

535



plot displays the one-sigma range of sedimentation rate within each dataset for each model and sediment core.  
In addition, filled circles represent the mean value for the optimized models.

## 4 Discussion

### 540 4.1 Assessment of different case studies

By comparing the cases for the two single sediment cores, it becomes clear how age-depth relationships may diverge depending on the individual modeling system and its treatment of available dating points (cf. Wright et al., 2017; Trachsel and Telford, 2017; Lacourse and Gajewski, 2020). In the case of EN18218 (“*Continuously deposited sequence*” – CS1), all five implemented modeling systems yield an agreeing and continuous chronology.

545 However, the two radiocarbon dates at 81.25 cm and 114.75 cm have a significant impact on the model’s interpretation for these depths. Vyse et al. (2021) argued that these two dates are outliers resulting from reworking and mixing effects within the sediment column. According to the authors, no additional proxy data from EN18218 would support the immediate increase in sedimentation rate for these depths and hence, they excluded both dates from the modeling process. Because we are not considering any additional proxy data to evaluate age-depth models  
550 in their geoscientific context, but rather include all provided age determination data into the modeling process, the consideration of these two radiocarbon dates on the basis of all available models leads to higher sedimentation rate. Nonetheless, the example here shows how the comprehensive application of the different modeling systems may help to identify doubtful dating points.

We saw a disagreement between the modeling systems in the case of sediment record EN18208 (“*Inconsistent sequence*” – CS2), which we expected prior to the execution of our application, due to the scattered dating points in the original data. Vyse et al. (2020) linked this scatter of age data points observed in the interval between 282 and 755 cm of EN18208 to the redeposition of older carbon. They implied that to produce reliable age-depth model they had to exclude both OSL and radiocarbon dating points for these depths. However, our optimized combined model agrees with their established age-depth model and can reproduce the characteristics of the existing model  
560 by Vyse et al. (2020), without removing dating points. In addition, in three out of four cases, our proxy-derived lithology with its uncertainty matches the lithological boundaries set by the authors of the EN18208 study, according to criteria based on acoustic sub-bottom profiling. Only the first original boundary (196 cm) is outside our confidence interval from 182 cm to 192 cm. We still showed that our approach could set logical boundaries for sediment cores by solely relying on high-resolution proxy data.

565 Despite a strong similarity between our optimized model and the existing model developed by Vyse et al. (2020), the highest score showed a low similarity value (0.0237) using our similarity scale from zero (no match) to one (perfect match). Although we chose the highest matching score to demonstrate LANDO’s ability of filtering out disagreeing models, we do not support the strategy of choosing a single age-depth model with such a low matching score. Rather, users should investigate the cause of the scatter in the age determination data and/or change the  
570 default values within LANDO. For example, to deal with the scatter in the data, users can increase the *Undatable* parameter “bootpc” to a higher value - as suggested by Lougheed and Obrochta (2019) - to account for a higher uncertainty in the given data. For palaeoenvironmental reconstruction, users should also propagate these increased uncertainties into their proxy interpretation, which is often underrepresented (Lacourse and Gajewski, 2020; McKay et al., 2021).

575 Even though LANDO can produce age-depth models for multiple sediment cores (*“Multiple cores”* – CS3), we must assume limitations in the geoscientific validity for some of the results. In a few cases, an optimization of age-depth models with independent proxy data would have been necessary, but such independent data were inaccessible or did not exist. As for these cases age-depth relationships between implemented modeling systems seem to disagree (see Figure S1 in the supplementary material), the results from our combined model might over-  
580 or underestimate the true sedimentation rate. On the other hand, optimization using proxy data can reduce these biases.

For instance, during the examination of the Holocene and the Pleistocene sedimentation rates (Figure 6), we noticed that one sediment core (PG1228) had an extremely high mean sedimentation rate for the Holocene dataset in *Undatable*. Similar to the second case study (*“Inconsistent sequence”* – CS2), we found scattered age data  
585 points for this sediment core, which influenced the modeling process of *Undatable*. Further, the result then affected our combined model by increasing the overall sedimentation rate for the Holocene in this core. However, LANDO identified the *Undatable* model as an outlier based on the lithology established through independent TOC proxy data. The optimized model then agreed well with the original publication by Andreev et al. (2003), which further increased the validity of our approach. Our findings suggest that high-resolution proxy data should accompany  
590 geochronological studies to enable a more concise and realistic assessment of the development of sedimentation rates over time in high latitude lake systems.

We further improved the validity of some results of our multi-core study by comparing our LANDO output with the available age-depth models from publications. In four cases (CoreID: 2008-3, Co1309, LS-9, PG1205), we adjusted our initial output to the previously published age-depth models (Rudaya et al., 2012; Gromig et al., 2019;   
595 Pizaric et al., 2001; Wagner et al., 2000). One reason for the discrepancy was that the age determination data were not available for the entire length of sediment cores and LANDO extrapolated beyond these dating points to match the core length. In the case of PG1205 (Wagner et al., 2000) with a core length of 9.85 m, dating points were available for the upper 2.5 meters (Table 4) and therefore LANDO extrapolated the remaining seven meters to cover the entire sediment core. However, the extrapolated results in accumulation rates do not reflect the geological  
600 history of the lake record provided by Wagner et al. (2000). We have therefore changed the length of the sediment core to the last dating point to avoid strong extrapolation. In case of Co1309 (Gromig et al., 2019), the age-depth model required the introduction of a hiatus that would span from 14 to 80 cal yr. BP (Andreev et al., 2019; Savelieva et al., 2019). However, while a specific customization (such as a hiatus) is possible for single core cases, this is not possible in the current version of LANDO for multi-core investigation. To overcome this, we reduced  
605 the length of the record used in our study for core Co1309 to the depth of the last available dating point (Table 4), such that the LANDO output matches the age-depth relationship reported by Gromig et al. (2019).

The detection of sedimentation rate change as indicator for the Holocene-Pleistocene boundary yielded contrasting results. While the results from *hamstr* were closest to the 11 700-year boundary, all other modeling systems place the largest change in sedimentation rate either before or after 11 700 yr BP. We hypothesize that three factors may  
610 have influenced all model results. (1) The age uncertainty (one-sigma range) within each individual model varied on average between 1000 and 3000 years for the period of 11 600 to 11 800 yr BP (Figure S3 in the supplementary material). This wide range of uncertainty does not provide confidence in pinpointing the boundary to an exact time slice. We expect that a higher amount of dating points close to the Holocene-Pleistocene boundary could constrain the models (Blaauw et al., 2018; Lacourse and Gajewski, 2020; Trachsel and Telford, 2017), which would lead to

615 a better estimate of the boundary. (2) The age output for each model is not evenly distributed, which means that  
in the period from 11 600 to 11 800 yr BP there are different numbers of observations for each core and each  
modeling system. We took this behavior into account by using binning (Alasadi and Bhaya, 2017). Otherwise, an  
interpolation between both age and sedimentation rate values could lead to potential biases in the interpretation.  
(3) While we assumed in our first setup that the main sedimentation rate change would occur at 11 700 yr BP  
620 consistently for all sediment cores (Figure 6), we cannot rule out the possibility that the sedimentation rate has  
changed significantly at different times for different lake systems. As our data collection covers a large area both  
in latitude and longitude (Figure 1), the variability between the models indicate the local variability between the  
climate and lithological preferences of the lake catchment for the involved sediment cores (e.g., Lozhkin et al.,  
2018; Finkenbinder et al., 2015; Anderson and Lozhkin, 2015; Kokorowski et al., 2008; Biskaborn et al., 2016;  
625 Courtin et al., 2021).

#### 4.2 Design of LANDO

From the beginning of the development of LANDO, we decided to integrate most of the default settings for each  
modeling system as default values (Table 2). Regional studies, such as the one performed by Goring et al. (2012),  
have shown that specific prior information for the Bayesian modeling systems are needed to best fit the models to  
630 lakes within a geographical area. Without this regional information, changing settings within the modeling system  
to an arbitrary higher or lower value without considering the regional diversity could lead to under- or overfitting,  
if the constraints are too loose or too strict (Trachsel and Telford, 2017). For the special case that users have in-  
depth knowledge for one lake or multiple lake system, users can easily adapt these parameters within LANDO, as  
we have made these settings accessible in the Jupyter Notebook itself.

635 Part of the reason we made this decision was that we acquired external age determination datasets where we may  
not necessarily have all the essential information to specify each model. But we also wanted to simplify the process  
for users who do not have in-depth modeling knowledge. By using the default values, we can compare models  
based on their ability to work with the available data. On the other hand, we are sure that the developers have set  
their default values based on systematic testing. Since we did not tune the age-depth models to the existing core,  
640 i.e. changing the parameters within each modeling system, we generated “uninformed” models that solely work  
with the available age determination data. By combining these “uninformed” models into one model, we have  
created an ensemble model that we consider to be data-driven and “semi-informed”.

The advantage of this data-driven, semi-informed model approach is that we are reducing the risk of overfitting  
by considering the uncertainty of all modeling systems. This allows us to reevaluate existing geoscientific  
645 interpretations with larger uncertainty by taking advantage of the ensemble outcome. Additionally, we found that  
the more information is accessible to generate age-depth models, the more accurate and less uncertain these models  
become. A higher density of age determination along the depth of the sediment core is desirable for future drilling  
campaigns (cf. Blaauw et al., 2018).

The disadvantage arises in our second case study (“*Inconsistent sequence*” – CS2) and the multi-core investigation  
650 (“*Multiple cores*” – CS3). For both cases we needed the optimization step to narrow down the most suitable age-  
depth models for each sediment core, since the unoptimized uncertainty band was otherwise too wide for a clear  
interpretation. The optimization requires additional and independent proxy data, which are not available for some

of our cores, especially for sediment cores obtained some decades ago. Our optimizing step is therefore mainly suitable for recently retrieved and analyzed sediment cores.

655 In addition to the assessment of age-modeling quality, we also checked the time and effort to conduct dating routines. We saw that *Bacon* had the highest runtime overall in all three case studies of our study design, which we link to our adjustment of the “ssize” parameter from 2000 (per default) to 8000 within the application. We increased this value to ensure good MCMC mixing for problematic cores, as suggested by Blaauw et al., (2021), as well as to guarantee we had enough iterations for our summarizing statistics to compare with other modeling  
660 systems. If users decide to reduce the value of “ssize”, we implemented an iterative process, which checks whether *Bacon* produced enough iterations. If this is not the case, then LANDO will iteratively rerun the same sediment core with a higher “ssize” to produce 10 000 iterations.

One unique feature of our application is the predominant use of parallelization within the age-depth modeling of multiple sediment cores. For instance, we used the “Dask” back-end for our sedimentation rate calculation. The  
665 advantage over popular Scala-based “Apache Spark” and its Python interface “PySpark” (Zaharia et al., 2016) is that the “Dask” back-end is Python-based and well integrated into the Python ecosystem (cf. Dask Development Team, 2016). Therefore, “Dask” natively works with Python packages already implemented in LANDO. The key difference is that “Dask” provides neither a query optimizer, nor relies on Map-Shuffle-Reduce, a data processing technique for distributed computing, but instead uses a generic task scheduling (cf. Dask Development Team,  
670 2016). Still, parallelization libraries and back-ends provide LANDO with additional speed-up that can promote future multi-core studies.

Within the ensemble model, we faced the challenge that the combination of all age distributions from the underlying age-depth models per centimeter represents a multi-modal distribution, especially in cases such as the  
675 “*Inconsistent sequence*” case study (CS2). It also means that the output of the ensemble model in these cases is susceptible to inclusion/exclusion of any model. However, we consider using the weighted average median age to be a suitable solution for the multi-model distribution problem, as it is a good indicator on the most probable age within each centimeter based on all modeling systems. But we advise users to use the age confidence intervals per centimeter in subsequent analyses, instead of relying solely on the weighted average median age (cf. Telford et al., 2004). By optimizing the ensemble model with the ability to include independent proxy data, users can increase  
680 the likelihood of a more probable mean age for their sediment core.

### 4.3 Technical specifications of LANDO

In the further course of development, we decided to limit the resolution of the age-depth relationships. Using a resolution of one-centimeter increments allows us to match most proxy measurements from each sediment core with our age-depth models, apart from high-resolution measurement, such as XRF measurements. To allow a  
685 matching with high-resolution proxy data, we tested for a higher resolution of 0.25 cm for our application. In the single sediment core cases (CS1 and CS2), this change did not affect the workflow of LANDO. In turn, the “*Multiple cores*” case (CS3) ran into memory issues. Since the SoS notebook and our parallel back-ends store the resulting data frames in memory, expanding the resulting data frames to a 0.25 cm resolution causes a fourfold increase in memory use, which limits our capability to run our application on a single laptop. As an intermediate  
690 solution, we stored the results from each parallelization worker on disk to free the memory and performed combining operations later. Based on this experience, we recommend working with data centers or increasing the

available main memory (RAM) of the operating computer for multi-core studies with expected high-resolution output.

Another advantage of parallelization is that most modeling systems only run on one CPU/thread. Nowadays, however, both personal computers and data centers are made up of multiple CPUs/threads. Especially for larger multi-site studies, our application has the advantage of cutting the overall computing time by running each modeling system on multiple CPUs/threads simultaneously, even for personal computers. In comparison to serial execution of multiple models on one CPU/thread, which would take several hours, our parallel execution reduced the computing time per modeling system by a factor up to four. When considering that our setup consisted of six CPUs (12 threads) and 16 GB RAM, user can increase this factor even further by using larger computing facilities.

Sediment core length is the most limiting factor that determines the overall computing time in our application. However, we want to ensure that users can model each sediment core over its entire length to match proxy data with the correct age-depth relationships. Within our LANDO system, we faced this problem by using extrapolation to calculate ages beyond available dating points. The exception here is the modeling system *Undatable*, which models only between the first and last dating point, as these two dating points act as anchors for the bootstrapping process (Lougheed and Obrochta, 2019). As a result, we saw the sedimentation rate dropping twice to zero at the end of the sedimentation rate calculations. We link this behavior to the end of the individual modeling processes of *Undatable* as well as the other implemented systems.

Extrapolating the age-depth models beyond age determination points always bears the risk that the extrapolated dates do not reflect the actual age. The implemented modeling systems account for this circumstance by increasing the uncertainty for these undated regions (Blaauw, 2010). While we are aware of this potential issue, we wanted to allow users to take advantage of the full age-depth coverage for their sediment core. Blaauw et al. (2018) pointed out in their findings that “most existing late-Quaternary studies contain fewer than one date per millennium” and recommended to increase the number of dating points to “a minimum of 2 dates per millennium”. This recommendation would further decrease the need of extrapolation and reduce the overall uncertainty of age-depth models. We agree that more age control can improve the age-depth modeling results, but until the associated costs to analyze organic material for radiocarbon dating decrease significantly (Hajdas et al., 2021; Zander et al., 2020), we recommend LANDO as tool to improve age-depth modeling.

#### **4.4 Current and future model implementation in LANDO**

During the development of our approach, we realized that some programs were not executable or parallelizable under the current circumstances. For instance, we tested *OxCal* 4.4 as stand-alone version on Windows with NodeJS (version 12.13.1.0) and the R package “oxcAAR” (Martin et al., 2021) within our application. In the case of EN18208, execution duration was above 3 hours until the notebook lost connection to the *OxCal* interface. Furthermore, some cores never fully reached convergence within *OxCal*. We tried adapting our set-ups including changing the internal constraints, i.e. placement and number of boundaries, or using different depositions models, i.e. alternating between sequential model (“Sequence()”) and Poisson-process deposition model (“P\_Sequence()”). According to Bronk Ramsey and Lee (2013), the long-term plan of *OxCal* is to make the entire source code openly accessible, which we fully support. An open source code would allow us to identify the current bottleneck so that we could implement *OxCal* in a future release.

730 To determine the best fitting age-depth model through the *clam* modeling software, we added the “best fit” option to LANDO by default. The “best fit” option utilizes the negative log fit results from all *clam* outputs and identifies the fit with the lowest result as best fit. We included two further exclusion criteria for *clam* models within LANDO: if a) there are too many age reversals within the models, or b) the fit reaches infinity. Under specific circumstances, some sediment cores will not have a fitting model, as is the case, for instance, in the “*Inconsistent sequence*” case study (CS2). Including models that do not fit the data would lead to erroneous estimations of the age-depth relationship. This comes with the cost of losing an established model in the combined model, if no fitting *clam* model is available. However, we think that the benefit of having a better fitting model outweighs this cost.

740 Although *Undatable* is open source and the fastest modeling system within LANDO, its original development environment (MATLAB) is not free of charge. That is why we implemented *Undatable* in the open source MATLAB-equivalent Octave. Since the Octave version of *Undatable* was slower than the original MATLAB version, we used the parallelization package “parallel” (Fujiwara et al., 2021) to provide comparable results in terms of computing time. To use *Undatable* with MATLAB within our application, users must acquire a license of MATLAB and link the MATLAB kernel to their license. Unfortunately, we do not have the capacity to provide individual licenses with LANDO. For users with an active MATLAB license, we provide in the repository mentioned in the “Code and data availability” section the appropriate code to run the MATLAB version of *Undatable* in LANDO.

750 We highly appreciate all the work that went into developing the stand-alone versions of each modeling system. Because LANDO relies on the work of these modeling systems, we encourage users of LANDO to cite the original modeling software alongside the LANDO publication in their work. Additionally, users should try the stand-alone versions for each modeling system to provide feedback to both LANDO and modeling system maintainers.

A potential expansion option of LANDO within the multi-language environment is to extend the application and allow future data analysis to use powerful tools, such as Python’s machine learning libraries, e.g., keras (Chollet and others, 2015) and tensorflow (Abadi et al., 2016). We anticipate that other developers can use LANDO as their starting point in building larger limnological data analysis application.

## 755 5 Conclusion

This paper introduced our application LANDO – a linked age-depth modeling notebook approach. We presented an improved age-depth modeling procedure for sediment cores from high-latitude lake systems by linking five established systems: *Bacon*, *Bchron*, *clam*, *hamstr*, and *Undatable*. The added value of our application is the reduced effort to use established modeling systems in a single Jupyter Notebook for both single and multiple dating series and at the same time make the results comparable. In addition, we introduced an ensemble model that uses the output from all models to create a more robust age-depth relationship. In the case of scattered age determination data, we further implemented an adapted version of the fuzzy change point approach that allow users to integrate independent proxy data as indicator of lithological changes. This option helps evaluate the performance of modeling systems across lithological boundaries while providing a more reliable ensemble age-depth model by filtering inappropriate model runs for problematic datasets. Our application also allows users to run large datasets with multiple sediment cores in parallel to reduce the overall computation time. In our data collection of 55 sediment cores from northern lake systems at high latitudes, we found that the main regime changes in sedimentation rates do not occur synchronously for all lakes at the Pleistocene-Holocene boundary. However, we

770 linked this behavior to the uncertainty within the modeling process as well as the local variability of the sediment cores within the collection.

### **Code and data availability**

The LANDO code is accessible at GitHub (<https://github.com/GPawi/LANDO>) (Pfalz, 2022). We provide five example spreadsheets in the repository for users to test the application. A stand-alone version of the LANDO application will be available upon publication. The dataset with all dating points used in this study, including their 775 references, will be accessible via Pangaea.

### **Competing interests**

The authors declare that they have no conflict of interest.

### **Author contribution**

780 GP wrote the manuscript with inputs from all co-authors. GP developed the application, designed and implemented the LANDO system, and conducted testing. BKB, BD, and JCF advised and supervised the work of GP. BKB, BD, LS, and DAS provided published and unpublished age determination data for this publication.

### **Acknowledgements**

785 The authors acknowledge the support of the Helmholtz Einstein Berlin International Berlin Research School in Data Science (HEIBRiDS), the Alfred Wegener Institute - Helmholtz Centre for Polar and Marine Research, the Einstein Center Digital Future, the Humboldt University of Berlin, and the Ministry of Education of the Russian Federation as part of a state task (project no. FSZN-2020-0016). We would like to thank the two reviewers Bryan C. Lougheed and Timothy J. Heaton as well as the authors of the community comment, who provided extensive and engaged feedback that helped us improve the manuscript. The authors highly appreciate all the work that went into developing the stand-alone versions of each modeling system. Hence, we like to thank Maarten Blaauw, 790 Andrew C. Parnell, Andrew Dolman, Bryan C. Lougheed, and Stephen P. Obrochta for their continuous work on *Bacon*, *Bchron*, *clam*, *hamstr*, and *Undatable*.

### **References**

Abadi, M., Barham, P., Chen, J., Chen, Z., Davis, A., Dean, J., Devin, M., Ghemawat, S., Irving, G., Isard, M., Kudlur, M., Levenberg, J., Monga, R., Moore, S., Murray, D. G., Steiner, B., Tucker, P., Vasudevan, V., 795 Warden, P., Wicke, M., Yu, Y., and Zheng, X.: TensorFlow: A system for large-scale machine learning, in: 12th USENIX Symposium on Operating Systems Design and Implementation (OSDI 16), 265–283, [https://doi.org/10.1016/0076-6879\(83\)01039-3](https://doi.org/10.1016/0076-6879(83)01039-3), 2016.

Abbott, M. B. and Stafford, T. W.: Radiocarbon geochemistry of modern and Ancient Arctic lake systems, Baffin Island, Canada, *Quat. Res.*, 45, 300–311, <https://doi.org/10.1006/qres.1996.0031>, 1996.

800 Alasadi, S. A. and Bhaya, W. S.: Review of data preprocessing techniques in data mining, *J. Eng. Appl. Sci.*, 12, 4102–4107, <https://doi.org/10.3923/jeasci.2017.4102.4107>, 2017.

Anderson, P., Minyuk, P., Lozhkin, A., Cherepanova, M., Borkhodoev, V., and Finney, B.: A multiproxy record of Holocene environmental changes from the northern Kuril Islands (Russian Far East), *J. Paleolimnol.*, 54, 379–

- 393, <https://doi.org/10.1007/s10933-015-9858-y>, 2015.
- 805 Anderson, P. M. and Lozhkin, A. V.: Late Quaternary vegetation of Chukotka (Northeast Russia), implications for Glacial and Holocene environments of Beringia, *Quat. Sci. Rev.*, 107, 112–128, <https://doi.org/10.1016/j.quascirev.2014.10.016>, 2015.
- Andreev, A. A., Tarasov, P. E., Siegert, C., Ebel, T., Klimanov, V. A., Melles, M., Bobrov, A. A., Dereviagin, A. Y., Lubinski, D. J., and Hubberten, H.-W.: Late Pleistocene and Holocene vegetation and climate on the northern Taymyr Peninsula, Arctic Russia, 32, 484–505, <https://doi.org/10.1080/03009480310003388>, 2003.
- 810 Andreev, A. A., Tarasov, P. E., Klimanov, V. A., Melles, M., Lisitsyna, O. M., and Hubberten, H. W.: Vegetation and climate changes around the Lama Lake, Taymyr Peninsula, Russia during the Late Pleistocene and Holocene, *Quat. Int.*, 122, 69–84, <https://doi.org/10.1016/j.quaint.2004.01.032>, 2004.
- Andreev, A. A., Tarasov, P. E., Ilyashuk, B. P., Ilyashuk, E. A., Cremer, H., Hermichen, W.-D., Wischer, F., and Hubberten, H.-W.: Holocene environmental history recorded in Lake Lyadhej-To sediments, Polar Urals, Russia, *Palaeogeogr. Palaeoclimatol. Palaeoecol.*, 223, 181–203, <https://doi.org/10.1016/j.palaeo.2005.04.004>, 2005.
- 815 Andreev, A. A., Shumilovskikh, L. S., Savelieva, L. A., Gromig, R., Fedorov, G. B., Ludikova, A., Wagner, B., Wennrich, V., Brill, D., and Melles, M.: Environmental conditions in northwestern Russia during MIS 5 inferred from the pollen stratigraphy in a sediment core from Lake Ladoga, 48, 377–386, <https://doi.org/10.1111/bor.12382>, 2019.
- 820 Andreev, A. A., Raschke, E., Biskaborn, B. K., Vyse, S. A., Courtin, J., Böhmer, T., Stoof-Leichsenring, K., Kruse, S., Pestryakova, L. A., and Herzschuh, U.: Late Pleistocene to Holocene vegetation and climate changes in northwestern Chukotka (Far East Russia) deduced from lakes Ilirney and Rauchuagytgyn pollen records, 50, 652–670, <https://doi.org/10.1111/bor.12521>, 2021.
- 825 Appleby, P. G.: Three decades of dating recent sediments by fallout radionuclides: A review, 18, 83–93, <https://doi.org/10.1177/0959683607085598>, 2008.
- Ascough, P., Cook, G., and Dugmore, A.: Methodological approaches to determining the marine radiocarbon reservoir effect, *Prog. Phys. Geogr.*, 29, 532–547, <https://doi.org/10.1191/0309133305pp461ra>, 2005.
- 830 Austin, W. E. N., Bard, E., Hunt, J. B., Kroon, D., and Peacock, J. D.: The  $^{14}\text{C}$  Age of the Icelandic Vedde Ash: Implications for Younger Dryas Marine Reservoir Age Corrections, *Radiocarbon*, 37, 53–62, <https://doi.org/10.1017/S0033822200014788>, 1995.
- Bao, R., McNichol, A. P., Hemingway, J. D., Lardie Gaylord, M. C., and Eglinton, T. I.: Influence of different acid treatments on the radiocarbon content spectrum of sedimentary organic matter determined by RPO/accelerator mass spectrometry, *Radiocarbon*, 61, 395–413, <https://doi.org/10.1017/RDC.2018.125>, 2019.
- 835 Baud, A., Jenny, J. P., Francus, P., and Gregory-Eaves, I.: Global acceleration of lake sediment accumulation rates associated with recent human population growth and land-use changes, *J. Paleolimnol.*, 66, 453–467, <https://doi.org/10.1007/s10933-021-00217-6>, 2021.
- Baumer, M. M., Wagner, B., Meyer, H., Leicher, N., Lenz, M., Fedorov, G., Pestryakova, L. A., and Melles, M.:



- 840 Climatic and environmental changes in the Yana Highlands of north-eastern Siberia over the last c. 57 000 years, derived from a sediment core from Lake Emanda, 50, 114–133, <https://doi.org/10.1111/bor.12476>, 2021.
- Bayer, M.: SQLAlchemy, in: *The Architecture of Open Source Applications Volume II: Structure, Scale, and a Few More Fearless Hacks*, edited by: Brown, A. and Wilson, G., [aosabook.org](http://aosabook.org), 2012.
- 845 Biskaborn, B. K., Herzschuh, U., Bolshiyarov, D., Savelieva, L., and Diekmann, B.: Environmental variability in northeastern Siberia during the last ~13,300yr inferred from lake diatoms and sediment-geochemical parameters, *Palaeogeogr. Palaeoclimatol. Palaeoecol.*, 329–330, 22–36, <https://doi.org/10.1016/j.palaeo.2012.02.003>, 2012.
- Biskaborn, B. K., Herzschuh, U., Bolshiyarov, D., Savelieva, L., Zibulski, R., and Diekmann, B.: Late Holocene thermokarst variability inferred from diatoms in a lake sediment record from the Lena Delta, Siberian Arctic, *J. Paleolimnol.*, 49, 155–170, <https://doi.org/10.1007/s10933-012-9650-1>, 2013a.
- 850 Biskaborn, B. K., Herzschuh, U., Bolshiyarov, D. Y., Schwamborn, G., and Diekmann, B.: Thermokarst processes and depositional events in a Tundra Lake, Northeastern Siberia, *Permafrost. Periglac. Process.*, 24, 160–174, <https://doi.org/10.1002/ppp.1769>, 2013b.
- Biskaborn, B. K., Subetto, D. A., Savelieva, L. A., Vakhrameeva, P. S., Hansche, A., Herzschuh, U., Klemm, J., Heinecke, L., Pestryakova, L. A., Meyer, H., Kuhn, G., and Diekmann, B.: Late Quaternary vegetation and lake system dynamics in north-eastern Siberia: Implications for seasonal climate variability, *Quat. Sci. Rev.*, 147, 406–421, <https://doi.org/10.1016/j.quascirev.2015.08.014>, 2016.
- 855 Biskaborn, B. K., Nazarova, L., Pestryakova, L. A., Syrykh, L., Funck, K., Meyer, H., Chaplignin, B., Vyse, S., Gorodnichev, R., Zakharov, E., Wang, R., Schwamborn, G., Bailey, H. L., and Diekmann, B.: Spatial distribution of environmental indicators in surface sediments of Lake Bolshoe Toko, Yakutia, Russia, 16, 4023–4049, <https://doi.org/10.5194/bg-16-4023-2019>, 2019.
- 860 Biskaborn, B. K., Nazarova, L., Kröger, T., Pestryakova, L. A., Syrykh, L., Pfalz, G., Herzschuh, U., and Diekmann, B.: Late Quaternary Climate Reconstruction and Lead-Lag Relationships of Biotic and Sediment-Geochemical Indicators at Lake Bolshoe Toko, Siberia, *Front. Earth Sci.*, 9, 703, <https://doi.org/10.3389/feart.2021.737353>, 2021.
- 865 Bjune, A. E., Greve Alsos, I., Brendryen, J., Edwards, M. E., Hafliðason, H., Johansen, M. S., Mangerud, J., Paus, A., Regnéll, C., Svendsen, J., and Clarke, C. L.: Rapid climate changes during the Lateglacial and the early Holocene as seen from plant community dynamics in the Polar Urals, Russia, *J. Quat. Sci.*, 00, jqs.3352, <https://doi.org/10.1002/jqs.3352>, 2021.
- 870 Blaauw, M.: Methods and code for “classical” age-modelling of radiocarbon sequences, *Quat. Geochronol.*, 5, 512–518, <https://doi.org/10.1016/j.quageo.2010.01.002>, 2010.
- Blaauw, M.: clam: Classical Age-Depth Modelling of Cores from Deposits, <https://cran.r-project.org/package=clam>, 2021.
- Blaauw, M. and Christen, J. A.: Flexible paleoclimate age-depth models using an autoregressive gamma process, *Bayesian Anal.*, 6, 457–474, <https://doi.org/10.1214/11-BA618>, 2011.

- 875 Blaauw, M. and Heegaard, E.: Estimation of Age-Depth Relationships, 379–413, [https://doi.org/10.1007/978-94-007-2745-8\\_12](https://doi.org/10.1007/978-94-007-2745-8_12), 2012.
- Blaauw, M., Christen, J. A., Bennett, K. D., and Reimer, P. J.: Double the dates and go for Bayes — Impacts of model choice, dating density and quality on chronologies, *Quat. Sci. Rev.*, 188, 58–66, <https://doi.org/10.1016/j.quascirev.2018.03.032>, 2018.
- 880 Blaauw, M., Christen, J. A., and Aquino Lopez, M. A.: rbacon: Age-Depth Modelling using Bayesian Statistics, <https://cran.r-project.org/package=rbacon>, 2021.
- Bradley, R. S.: *Paleoclimatology: Reconstructing Climates of the Quaternary Second Edition*, 3rd ed., Elsevier, Oxford, 557 pp., <https://doi.org/10.1029/eo081i050p00613-01>, 2015.
- Brauer, A.: Annually Laminated Lake Sediments and Their Palaeoclimatic Relevance, 109–127, [https://doi.org/10.1007/978-3-662-10313-5\\_7](https://doi.org/10.1007/978-3-662-10313-5_7), 2004.
- 885 Brock, F., Higham, T., Ditchfield, P., and Ramsey, C. B.: Current Pretreatment Methods for AMS Radiocarbon Dating at the Oxford Radiocarbon Accelerator Unit (Orau), *Radiocarbon*, 52, 103–112, <https://doi.org/10.1017/S0033822200045069>, 2010.
- Bronk Ramsey, C.: Radiocarbon Calibration and Analysis of Stratigraphy: The OxCal Program, *Radiocarbon*, 37, 425–430, <https://doi.org/10.1017/s0033822200030903>, 1995.
- 890 Bronk Ramsey, C.: Deposition models for chronological records, *Quat. Sci. Rev.*, 27, 42–60, <https://doi.org/10.1016/j.quascirev.2007.01.019>, 2008.
- Bronk Ramsey, C.: Dealing with Outliers and Offsets in Radiocarbon Dating, *Radiocarbon*, 51, 1023–1045, <https://doi.org/10.1017/s0033822200034093>, 2009.
- 895 Bronk Ramsey, C. and Lee, S.: Recent and Planned Developments of the Program OxCal, *Radiocarbon*, 55, 720–730, <https://doi.org/10.1017/s0033822200057878>, 2013.
- Cadena-Vela, S., Mazón, J.-N., and Fuster-Guilló, A.: Defining a Master Data Management Approach for Increasing Open Data Understandability, in: *Lecture Notes in Computer Science (including subseries Lecture Notes in Artificial Intelligence and Lecture Notes in Bioinformatics)*, vol. 11878 LNCS, 169–178, [https://doi.org/10.1007/978-3-030-40907-4\\_17](https://doi.org/10.1007/978-3-030-40907-4_17), 2020.
- 900 Chollet, F. and others: Keras: The Python Deep Learning library, <https://keras.io>, 2015.
- Ciarletta, D. J., Shawler, J. L., Tenebruso, C., Hein, C. J., and Lorenzo-Trueba, J.: Reconstructing Coastal Sediment Budgets From Beach- and Foredune-Ridge Morphology: A Coupled Field and Modeling Approach, *J. Geophys. Res. Earth Surf.*, 124, 1398–1416, <https://doi.org/10.1029/2018JF004908>, 2019.
- 905 Clark, P. U., Dyke, A. S., Shakun, J. D., Carlson, A. E., Clark, J., Wohlfarth, B., Mitrovica, J. X., Hostetler, S. W., and McCabe, A. M.: The Last Glacial Maximum, *Science (80-. )*, 325, 710–714, <https://doi.org/10.1126/science.1172873>, 2009.
- Colman, S. M., Jones, G. A., Rubin, M., King, J. W., Peck, J. A., and Orem, W. H.: AMS radiocarbon analyses

- 910 from Lake Baikal, Siberia: Challenges of dating sediments from a large, oligotrophic lake, *Quat. Sci. Rev.*, 15, 669–684, [https://doi.org/10.1016/0277-3791\(96\)00027-3](https://doi.org/10.1016/0277-3791(96)00027-3), 1996.
- Corner, G. D., Kolka, V. V., Yevzerov, V. Y., and Møller, J. J.: Postglacial relative sea-level change and stratigraphy of raised coastal basins on Kola Peninsula, northwest Russia, *Glob. Planet. Change*, 31, 155–177, [https://doi.org/10.1016/S0921-8181\(01\)00118-7](https://doi.org/10.1016/S0921-8181(01)00118-7), 2001.
- 915 Courtin, J., Andreev, A. A., Raschke, E., Bala, S., Biskaborn, B. K., Liu, S., Zimmermann, H., Diekmann, B., Stoof-Leichsenring, K. R., Pestryakova, L. A., and Herzschuh, U.: Vegetation Changes in Southeastern Siberia During the Late Pleistocene and the Holocene, *Front. Ecol. Evol.*, 9, 233, <https://doi.org/10.3389/fevo.2021.625096>, 2021.
- Cremer, H., Wagner, B., Melles, M., and Hubberten, H. W.: The postglacial environmental development of Raffles Sø, East Greenland: Inferences from a 10,000 year diatom record, *J. Paleolimnol.*, 26, 67–87, 920 <https://doi.org/10.1023/A:1011179321529>, 2001.
- Dask Development Team: Dask: Library for dynamic task scheduling, <https://dask.org>, 2016.
- Dee, M. W., Palstra, S. W. L., Aerts-Bijma, A. T., Bleeker, M. O., De Bruijn, S., Ghebru, F., Jansen, H. G., Kuitens, M., Paul, D., Richie, R. R., Spriensma, J. J., Scifo, A., Van Zonneveld, D., Verstappen-Dumoulin, B. M. A. A., Wietzes-Land, P., and Meijer, H. A. J.: Radiocarbon Dating at Groningen: New and Updated 925 Chemical Pretreatment Procedures, *Radiocarbon*, 62, 63–74, <https://doi.org/10.1017/RDC.2019.101>, 2020.
- Diekmann, B., Pestryakova, L., Nazarova, L., Subetto, D. A., Tarasov, P. E., Stauch, G., Thiemann, A., Lehmkuhl, F., Biskaborn, B. K., Kuhn, G., Henning, D., and Müller, S.: Late Quaternary Lake Dynamics in the Verkhoyansk Mountains of Eastern Siberia: Implications for Climate and Glaciation History, *Polarforschung*, 86, 97–110, <https://doi.org/10.2312/polarforschung.86.2.97>, 2017.
- 930 Diepenbroek, M., Grobe, H., Reinke, M., Schindler, U., Schlitzer, R., Sieger, R., and Wefer, G.: PANGAEA - an information system for environmental sciences, *Comput. Geosci.*, 28, 1201–1210, [https://doi.org/10.1016/S0098-3004\(02\)00039-0](https://doi.org/10.1016/S0098-3004(02)00039-0), 2002.
- Dirksen, V., Dirksen, O., van den Bogaard, C., and Diekmann, B.: Holocene pollen record from Lake Sokoch, interior Kamchatka (Russia), and its paleobotanical and paleoclimatic interpretation, *Glob. Planet. Change*, 134, 935 129–141, <https://doi.org/10.1016/j.gloplacha.2015.07.010>, 2015.
- Dolman, A. M.: hamstr: Hierarchical Accumulation Modelling with Stan and R, <https://github.com/EarthSystemDiagnostics/hamstr>, 2022.
- Finkenbinder, M. S., Abbott, M. B., Finney, B. P., Stoner, J. S., and Dorfman, J. M.: A multi-proxy reconstruction of environmental change spanning the last 37,000 years from Burial Lake, Arctic Alaska, *Quat. Sci. Rev.*, 126, 227–241, <https://doi.org/10.1016/j.quascirev.2015.08.031>, 2015. 940
- Fujiwara, H., Hajek, J., and Till, O.: Octave Forge - The “parallel” package, <https://octave.sourceforge.io/parallel/index.html>, 2021.
- Gaujoux, R.: doRNG: Generic Reproducible Parallel Backend for “foreach” Loops, <https://cran.r->

project.org/package=doRNG, 2020.

- 945 Goring, S., Williams, J. W., Blois, J. L., Jackson, S. T., Paciorek, C. J., Booth, R. K., Marlon, J. R., Blaauw, M., and Christen, J. A.: Deposition times in the northeastern United States during the Holocene: Establishing valid priors for Bayesian age models, *Quat. Sci. Rev.*, 48, 54–60, <https://doi.org/10.1016/j.quascirev.2012.05.019>, 2012.
- Gromig, R., Wagner, B., Wennrich, V., Fedorov, G., Savelieva, L., Lebas, E., Krastel, S., Brill, D., Andreev, A.,  
950 Subetto, D., and Melles, M.: Deglaciation history of Lake Ladoga (northwestern Russia) based on varved sediments, 48, 330–348, <https://doi.org/10.1111/bor.12379>, 2019.
- Hajdas, I., Ascough, P., Garnett, M. H., Fallon, S. J., Pearson, C. L., Quarta, G., Spalding, K. L., Yamaguchi, H., and Yoneda, M.: Radiocarbon dating, *Nat. Rev. Methods Prim.*, 1, 62, <https://doi.org/10.1038/s43586-021-00058-7>, 2021.
- 955 Harris, C. R., Millman, K. J., van der Walt, S. J., Gommers, R., Virtanen, P., Cournapeau, D., Wieser, E., Taylor, J., Berg, S., Smith, N. J., Kern, R., Picus, M., Hoyer, S., van Kerkwijk, M. H., Brett, M., Haldane, A., del Río, J. F., Wiebe, M., Peterson, P., Gérard-Marchant, P., Sheppard, K., Reddy, T., Weckesser, W., Abbasi, H., Gohlke, C., and Oliphant, T. E.: Array programming with NumPy, *Nature*, 585, 357–362, <https://doi.org/10.1038/s41586-020-2649-2>, 2020.
- 960 Haslett, J. and Parnell, A.: A simple monotone process with application to radiocarbon-dated depth chronologies, *J. R. Stat. Soc. Ser. C Appl. Stat.*, 57, 399–418, <https://doi.org/10.1111/j.1467-9876.2008.00623.x>, 2008.
- Heaton, T. J., Köhler, P., Butzin, M., Bard, E., Reimer, R. W., Austin, W. E. N., Bronk Ramsey, C., Grootes, P. M., Hughen, K. A., Kromer, B., Reimer, P. J., Adkins, J., Burke, A., Cook, M. S., Olsen, J., and Skinner, L. C.: Marine20 - The Marine Radiocarbon Age Calibration Curve (0-55,000 cal BP), *Radiocarbon*, 62, 779–820,  
965 <https://doi.org/10.1017/RDC.2020.68>, 2020.
- von Hippel, B., Stoof-Leichsenring, K. R., Schulte, L., Seeber, P., Biskaborn, B. K., Diekmann, B., Melles, M., Pestyakova, L., and Herzschuh, U.: Long-term fungus–plant co-variation from multi-site sedimentary ancient DNA metabarcoding in Siberia, 1–31 pp., <https://doi.org/10.1101/2021.11.05.465756>, 2021.
- Hoff, U., Dirksen, O., Dirksen, V., Herzschuh, U., Hubberten, H. W., Meyer, H., van den Bogaard, C., and  
970 Diekmann, B.: Late Holocene diatom assemblages in a lake-sediment core from Central Kamchatka, Russia, *J. Paleolimnol.*, 47, 549–560, <https://doi.org/10.1007/s10933-012-9580-y>, 2012.
- Hoff, U., Biskaborn, B. K., Dirksen, V. G., Dirksen, O., Kuhn, G., Meyer, H., Nazarova, L., Roth, A., and Diekmann, B.: Holocene environment of Central Kamchatka, Russia: Implications from a multi-proxy record of Two-Yurts Lake, *Glob. Planet. Change*, 134, 101–117, <https://doi.org/10.1016/j.gloplacha.2015.07.011>, 2015.
- 975 Hogg, A. G., Heaton, T. J., Hua, Q., Palmer, J. G., Turney, C. S. M., Southon, J., Bayliss, A., Blackwell, P. G., Boswijk, G., Bronk Ramsey, C., Pearson, C., Petchey, F., Reimer, P., Reimer, R., and Wacker, L.: SHCal20 Southern Hemisphere Calibration, 0-55,000 Years cal BP, *Radiocarbon*, 62, 759–778, <https://doi.org/10.1017/RDC.2020.59>, 2020.
- Hollaway, M. J., Henrys, P. A., Killick, R., Leeson, A., and Watkins, J.: Evaluating the ability of numerical

- 980 models to capture important shifts in environmental time series: A fuzzy change point approach, *Environ. Model. Softw.*, 139, 104993, <https://doi.org/10.1016/j.envsoft.2021.104993>, 2021.
- Hughes-Allen, L., Bouchard, F., Hatté, C., Meyer, H., Pestryakova, L. A., Diekmann, B., Subetto, D. A., and Biskaborn, B. K.: 14,000-year Carbon Accumulation Dynamics in a Siberian Lake Reveal Catchment and Lake Productivity Changes, *Front. Earth Sci.*, 9, 1–19, <https://doi.org/10.3389/feart.2021.710257>, 2021.
- 985 Joblib Development Team: Joblib: running Python functions as pipeline jobs, <https://joblib.readthedocs.io/>, 2020.
- Khazin, L. B., Khazina, I. V., Krivonogov, S. K., Kuzmin, Y. V., Prokopenko, A. A., Yi, S., and Burr, G. S.: Holocene climate changes in southern West Siberia based on ostracod analysis, *Russ. Geol. Geophys.*, 57, 574–585, <https://doi.org/10.1016/j.rgg.2015.05.012>, 2016.
- 990 Killick, R. and Eckley, I. A.: changepoint: An R Package for Changepoint Analysis, *J. Stat. Softw.*, 58, 1–19, 2014.
- Killick, R., Haynes, K., and Eckley, I. A.: changepoint: An R package for changepoint analysis, <https://cran.r-project.org/package=changepoint>, 2016.
- Kluyver, T., Ragan-Kelley, B., Pérez, F., Granger, B., Bussonnier, M., Frederic, J., Kelley, K., Hamrick, J., 995 Grout, J., Corlay, S., Ivanov, P., Avila, D., Abdalla, S., and Willing, C.: Jupyter Notebooks -- a publishing format for reproducible computational workflows, in: *Positioning and Power in Academic Publishing: Players, Agents and Agendas*, 87–90, 2016.
- Kokorowski, H. D., Anderson, P. M., Mock, C. J., and Lozhkin, A. V.: A re-evaluation and spatial analysis of evidence for a Younger Dryas climatic reversal in Beringia, *Quat. Sci. Rev.*, 27, 1710–1722, 1000 <https://doi.org/10.1016/j.quascirev.2008.06.010>, 2008.
- Kolka, V. V., Korsakova, O. P., Lavrova, N. B., Shelekhova, T. S., Tolstobrova, A. N., Tolstobrov, D. S., and Zaretskaya, N. E.: Small lakes bottom sediments stratigraphy and paleogeography of the Onega Bay west coast of the White Sea in the Late Glacial and Holocene, 2018-Janua, 48–59, <https://doi.org/10.7868/S0435428118020049>, 2018.
- 1005 Kolka, V. V., Korsakova, O. P., Shelekhova, T. S., Tolstobrova, A. N., and Представлены, A.: Reconstruction of the relative level of the White Sea during the Lateglacial – Holocene according to lithological, diatom analyses and radiocarbon dating of small lakes bottom sediments in the area of the Chupa settlement (North Karelia, Russia), 255–268, 2015.
- 1010 Kublitskiy, Y., Kulkova, M., Druzhinina, O., Subetto, D., Stančikaitė, M., Gedminienė, L., and Arslanov, K.: Geochemical Approach to the Reconstruction of Sedimentation Processes in Kamyshovoye Lake (SE Baltic, Russia) during the Late Glacial and Holocene, 10, 764, <https://doi.org/10.3390/min10090764>, 2020.
- Lacourse, T. and Gajewski, K.: Current practices in building and reporting age-depth models, *Quat. Res.*, 96, 28–38, <https://doi.org/10.1017/qua.2020.47>, 2020.
- Lehnherr, I., St Louis, V. L., Sharp, M., Gardner, A. S., Smol, J. P., Schiff, S. L., Muir, D. C. G., Mortimer, C.

- 1015 A., Michelutti, N., Tarnocai, C., St Pierre, K. A., Emmerton, C. A., Wiklund, J. A., Köck, G., Lamoureux, S. F., and Talbot, C. H.: The world’s largest High Arctic lake responds rapidly to climate warming, *Nat. Commun.*, **9**, 1–9, <https://doi.org/10.1038/s41467-018-03685-z>, 2018.
- Lougheed, B. C. and Obrochta, S. P.: A Rapid, Deterministic Age-Depth Modeling Routine for Geological Sequences With Inherent Depth Uncertainty, *Paleoceanogr. Paleoclimatology*, **34**, 122–133, <https://doi.org/10.1029/2018PA003457>, 2019.
- 1020 Lougheed, B. C., Van Der Lubbe, H. J. L., and Davies, G. R.:  $^{87}\text{Sr}/^{86}\text{Sr}$  as a quantitative geochemical proxy for  $^{14}\text{C}$  reservoir age in dynamic, brackish waters: Assessing applicability and quantifying uncertainties, *Geophys. Res. Lett.*, **43**, 735–742, <https://doi.org/10.1002/2015GL066983>, 2016.
- Lowe, J. J. and Walker, M.: *Reconstructing Quaternary Environments*, Routledge, <https://doi.org/10.4324/9781315797496>, 2014.
- 1025 Lozhkin, A., Minyuk, P., Cherepanova, M., Anderson, P., and Finney, B.: Holocene environments of central Iturup Island, southern Kuril archipelago, Russian Far East, *Quat. Res. (United States)*, **88**, 23–38, <https://doi.org/10.1017/qua.2017.21>, 2017.
- Lozhkin, A., Anderson, P., Minyuk, P., Korzun, J., Brown, T., Pakhomov, A., Tsygankova, V., Burnatny, S., and Naumov, A.: Implications for conifer glacial refugia and postglacial climatic variation in western Beringia from lake sediments of the Upper Indigirka basin, **47**, 938–953, <https://doi.org/10.1111/bor.12316>, 2018.
- 1030 Lozhkin, A., Cherepanova, M., Anderson, P., Minyuk, P., Finney, B., Pakhomov, A., Brown, T., Korzun, J., and Tsygankova, V.: Late Holocene history of Tokotan Lake (Kuril Archipelago, Russian Far East): The use of lacustrine records for paleoclimatic reconstructions from geologically dynamic settings, *Quat. Int.*, **553**, 104–117, <https://doi.org/https://doi.org/10.1016/j.quaint.2020.05.023>, 2020.
- 1035 Mackay, A. W., Bezrukova, E. V., Leng, M. J., Meaney, M., Nunes, A., Piotrowska, N., Self, A., Shchetnikov, A., Shilland, E., Tarasov, P., Wang, L., and White, D.: Aquatic ecosystem responses to Holocene climate change and biome development in boreal, central Asia, *Quat. Sci. Rev.*, **41**, 119–131, <https://doi.org/10.1016/j.quascirev.2012.03.004>, 2012.
- 1040 Martin, H., Schmid, C., Knitter, D., and Tietze, C.: *oxcAAR: Interface to “OxCal” Radiocarbon Calibration*, <https://cran.r-project.org/package=oxcAAR>, 2021.
- McKay, N. P., Emile-Geay, J., and Khider, D.: *geoChronR – an R package to model, analyze, and visualize age-uncertain data*, **3**, 149–169, <https://doi.org/10.5194/gchron-3-149-2021>, 2021.
- Microsoft Corporation and Weston, S.: *doParallel: Foreach Parallel Adaptor for the “parallel” Package*, <https://cran.r-project.org/package=doParallel>, 2020a.
- 1045 Microsoft Corporation and Weston, S.: *doSNOW: Foreach Parallel Adaptor for the “snow” Package*, <https://cran.r-project.org/package=doSNOW>, 2020b.
- Microsoft Corporation and Weston, S.: *foreach: Provides Foreach Looping Construct*, <https://cran.r-project.org/package=foreach>, 2020c.

- 1050 Müller, S., Tarasov, P. E., Andreev, A. A., and Diekmann, B.: Late Glacial to Holocene environments in the present-day coldest region of the Northern Hemisphere inferred from a pollen record of Lake Billyakh, Verkhoyansk Mts, NE Siberia, *Clim. Past*, 5, 73–84, <https://doi.org/10.5194/cp-5-73-2009>, 2009.
- Müller, S., Tarasov, P. E., Andreev, A. A., Tütken, T., Gartz, S., and Diekmann, B.: Late Quaternary vegetation and environments in the Verkhoyansk Mountains region (NE Asia) reconstructed from a 50-kyr fossil pollen record from Lake Billyakh, *Quat. Sci. Rev.*, 29, 2071–2086, <https://doi.org/10.1016/j.quascirev.2010.04.024>, 2010.
- 1055 Nazarova, L., Lüpfer, H., Subetto, D., Pestryakova, L., and Diekmann, B.: Holocene climate conditions in central Yakutia (Eastern Siberia) inferred from sediment composition and fossil chironomids of Lake Temje, *Quat. Int.*, 290–291, 264–274, <https://doi.org/10.1016/j.quaint.2012.11.006>, 2013.
- 1060 Niephaus, F., Felgentreff, T., and Hirschfeld, R.: Towards polyglot adapters for the GraalVM, *ACM Int. Conf. Proceeding Ser.*, <https://doi.org/10.1145/3328433.3328458>, 2019.
- Nowaczyk, N. R., Minyuk, P., Melles, M., Brigham-Grette, J., Glushkova, O., Nolan, M., Lozhkin, A. V., Stetsenko, T. V., Andersen, P. M., and Forman, S. L.: Magnetostratigraphic results from impact crater Lake El'gygytyn, northeastern Siberia: a 300 kyr long high-resolution terrestrial palaeoclimatic record from the Arctic, *Geophys. J. Int.*, 150, 109–126, <https://doi.org/10.1046/j.1365-246X.2002.01625.x>, 2002.
- 1065 Olsen, J., Ascough, P., Lougheed, B. C., and Rasmussen, P.: Radiocarbon Dating in Estuarine Environments, 141–170, [https://doi.org/10.1007/978-94-024-0990-1\\_7](https://doi.org/10.1007/978-94-024-0990-1_7), 2017.
- Palagushkina, O., Wetterich, S., Biskaborn, B. K., Nazarova, L., Schirrmeister, L., Lenz, J., Schwamborn, G., and Grosse, G.: Diatom records and tephra mineralogy in pingo deposits of Seward Peninsula, Alaska, *Palaeogeogr. Palaeoclimatol. Palaeoecol.*, 479, 1–15, <https://doi.org/10.1016/j.palaeo.2017.04.006>, 2017.
- 1070 Parnell, A. C., Haslett, J., Allen, J. R. M., Buck, C. E., and Huntley, B.: A flexible approach to assessing synchronicity of past events using Bayesian reconstructions of sedimentation history, *Quat. Sci. Rev.*, 27, 1872–1885, <https://doi.org/10.1016/j.quascirev.2008.07.009>, 2008.
- Parnell, A. C., Buck, C. E., and Doan, T. K.: A review of statistical chronology models for high-resolution, proxy-based Holocene palaeoenvironmental reconstruction, *Quat. Sci. Rev.*, 30, 2948–2960, <https://doi.org/10.1016/j.quascirev.2011.07.024>, 2011.
- 1075 Peng, B., Wang, G., Ma, J., Leong, M. C., Wakefield, C., Melott, J., Chiu, Y., Du, D., and Weinstein, J. N.: SoS notebook: An interactive multi-language data analysis environment, 34, 3768–3770, <https://doi.org/10.1093/bioinformatics/bty405>, 2018.
- 1080 Pfalz, G.: GPawi/LANDO: LANDO public release v1.3, <https://doi.org/10.5281/zenodo.5734333>, 2022.
- Pfalz, G., Diekmann, B., Freytag, J.-C., and Biskaborn, B. K.: Computers and Geosciences Harmonizing heterogeneous multi-proxy data from lake systems, *Comput. Geosci.*, 153, 11, <https://doi.org/10.1016/j.cageo.2021.104791>, 2021.
- Piotrowska, N., Bluszcz, A., Demske, D., Granoszewski, W., and Heumann, G.: Extraction and AMS

- 1085 Radiocarbon Dating of Pollen from Lake Baikal Sediments, *Radiocarbon*, 46, 181–187, <https://doi.org/10.1017/S0033822200039503>, 2004.
- Pisaric, M. F. J., MacDonald, G. M., Velichko, A. A., and Cwynar, L. C.: The Lateglacial and Postglacial vegetation history of the northwestern limits of Beringia, based on pollen, stomate and tree stump evidence, *Quat. Sci. Rev.*, 20, 235–245, [https://doi.org/10.1016/S0277-3791\(00\)00120-7](https://doi.org/10.1016/S0277-3791(00)00120-7), 2001.
- 1090 R Core Team: R: A Language and Environment for Statistical Computing, <https://www.r-project.org/>, 2021.
- Raab, A., Melles, M., Berger, G. W., Hagedorn, B., and Hubberten, H. W.: Non-glacial paleoenvironments and the extent of Weichselian ice sheets on Severnaya Zemlya, Russian High Arctic, *Quat. Sci. Rev.*, 22, 2267–2283, [https://doi.org/10.1016/S0277-3791\(03\)00139-2](https://doi.org/10.1016/S0277-3791(03)00139-2), 2003.
- Rasmussen, S. O., Andersen, K. K., Svensson, A. M., Steffensen, J. P., Vinther, B. M., Clausen, H. B., Siggaard-  
1095 Andersen, M. L., Johnsen, S. J., Larsen, L. B., Dahl-Jensen, D., Bigler, M., Röthlisberger, R., Fischer, H., Goto-Azuma, K., Hansson, M. E., and Ruth, U.: A new Greenland ice core chronology for the last glacial termination, *J. Geophys. Res. Atmos.*, 111, 1–16, <https://doi.org/10.1029/2005JD006079>, 2006.
- Reback, J., McKinney, W., jbrockmendel, Bossche, J. Van den, Augspurger, T., Cloud, P., gfyong, Sinhrks, Hawkins, S., Roeschke, M., Klein, A., Petersen, T., Tratner, J., She, C., Ayd, W., Naveh, S., Garcia, M.,  
1100 Schendel, J., Hayden, A., Saxton, D., Jancauskas, V., McMaster, A., Battiston, P., Seabold, S., patrick, Dong, K., chris-b1, h-vetinari, Hoyer, S., and Gorelli, M.: pandas-dev/pandas: Pandas 1.1.5, <https://doi.org/10.5281/ZENODO.4309786>, 2020.
- Reimer, P. J., Austin, W. E. N., Bard, E., Bayliss, A., Blackwell, P. G., Bronk Ramsey, C., Butzin, M., Cheng, H., Edwards, R. L., Friedrich, M., Grootes, P. M., Guilderson, T. P., Hajdas, I., Heaton, T. J., Hogg, A. G.,  
1105 Hughen, K. A., Kromer, B., Manning, S. W., Muscheler, R., Palmer, J. G., Pearson, C., van der Plicht, J., Reimer, R. W., Richards, D. A., Scott, E. M., Southon, J. R., Turney, C. S. M., Wacker, L., Adolphi, F., Büntgen, U., Capano, M., Fahrni, S. M., Fogtmann-Schulz, A., Friedrich, R., Köhler, P., Kudsk, S., Miyake, F., Olsen, J., Reinig, F., Sakamoto, M., Sookdeo, A., and Talamo, S.: THE INTCAL20 NORTHERN HEMISPHERE RADIOCARBON AGE CALIBRATION CURVE (0–55 CAL kBP), *Radiocarbon*, 1–33,  
1110 <https://doi.org/10.1017/RDC.2020.41>, 2020.
- Rethemeyer, J., Gierga, M., Heinze, S., Stolz, A., Wotte, A., Wischhöfer, P., Berg, S., Melchert, J., and Dewald, A.: Current Sample Preparation and Analytical Capabilities of the Radiocarbon Laboratory at CologneAMS, *Radiocarbon*, 61, 1449–1460, <https://doi.org/10.1017/rdc.2019.16>, 2019.
- Rudaya, N., Nazarova, L., Nourgaliev, D., Palagushkina, O., Papin, D., and Frolova, L.: Mid-late Holocene environmental history of Kulunda, southern West Siberia: vegetation, climate and humans, *Quat. Sci. Rev.*, 48, 32–42, <https://doi.org/10.1016/j.quascirev.2012.06.002>, 2012.
- Rudaya, N., Nazarova, L., Novenko, E., Andreev, A., Kalugin, I., Daryin, A., Babich, V., Li, H. C., and Shilov, P.: Quantitative reconstructions of mid- to late holocene climate and vegetation in the north-eastern altai mountains recorded in lake teletskoye, *Glob. Planet. Change*, 141, 12–24,  
1120 <https://doi.org/10.1016/j.gloplacha.2016.04.002>, 2016.



- Rudaya, N., Nazarova, L., Frolova, L., Palagushkina, O., Soenov, V., Cao, X., Syrykh, L., Grekov, I., Otgonbayar, D., and Bayarkhuu, B.: The link between climate change and biodiversity of lacustrine inhabitants and terrestrial plant communities of the Uvs Nuur Basin (Mongolia) during the last three millennia, 31, 1443–1458, <https://doi.org/10.1177/09596836211019093>, 2021.
- 1125 Savelieva, L. A., Andreev, A. A., Gromig, R., Subetto, D. A., Fedorov, G. B., Wennrich, V., Wagner, B., and Melles, M.: Vegetation and climate changes in northwestern Russia during the Lateglacial and Holocene inferred from the Lake Ladoga pollen record, 48, 349–360, <https://doi.org/10.1111/bor.12376>, 2019.
- Schleusner, P., Biskaborn, B. K., Kienast, F., Wolter, J., Subetto, D., and Diekmann, B.: Basin evolution and palaeoenvironmental variability of the thermokarst lake El'gene-Kyuele, Arctic Siberia, 44, 216–229, <https://doi.org/10.1111/bor.12084>, 2015.
- 1130 Shelekhova, T. and Lavrova, N.: Paleogeographic reconstructions of the Northwest Karelia region evolution in the holocene based on the study of small lake sediments, *Proc. Karelian Res. Cent. Russ. Acad. Sci.*, 101, <https://doi.org/10.17076/lim1268>, 2020.
- Shelekhova, T., Tikhonova, Y., and Lazareva, O.: Late Glacial and Holocene Natural Environment Dynamics and Evolution of Lake Okunozero, South Karelia: Micropalaeontological Data, *Proc. Karelian Res. Cent. Russ. Acad. Sci.*, 55, 134, <https://doi.org/10.17076/lim1319>, 2021a.
- 1135 Shelekhova, T. S., Lavrova, N. B., Lazareva, O. V., and Tikhonova, Y. S.: Paleogeographic Conditions Of Sedimentation In The Small Lakes Of Western Karelia In The Holocene, in: *Routes Of Evolutionary Geography - Issue 2*, 449–454, 2021b.
- 1140 Shelekhova, T. S., Lavrova, N. B., and Subetto, D. A.: Reconstruction of paleogeographic conditions in the Late Glacial-Holocene in Central Karelia based on comprehensive analysis of sediments from the lake Yuzhnoe Haugilampi, 153, 73–89, <https://doi.org/10.31857/S0869607121060070>, 2021c.
- Smol, J. P.: Arctic and Sub-Arctic shallow lakes in a multiple-stressor world: a paleoecological perspective, *Hydrobiologia*, 778, 253–272, <https://doi.org/10.1007/s10750-015-2543-3>, 2016.
- 1145 Strunk, A., Olsen, J., Sanei, H., Rudra, A., and Larsen, N. K.: Improving the reliability of bulk sediment radiocarbon dating, *Quat. Sci. Rev.*, 242, 106442, <https://doi.org/10.1016/j.quascirev.2020.106442>, 2020.
- Subetto, D. A., Nazarova, L. B., Pstryakova, L. A., Syrykh, L. S., Andronikov, A. V., Biskaborn, B., Diekmann, B., Kuznetsov, D. D., Sapelko, T. V., and Grekov, I. M.: Paleolimnological studies in Russian northern Eurasia: A review, *Contemp. Probl. Ecol.*, 10, 327–335, <https://doi.org/10.1134/S1995425517040102>, 2017.
- 1150 Syrykh, L., Subetto, D., and Nazarova, L.: Paleolimnological studies on the East European Plain and nearby regions: the PaleoLake Database, *J. Paleolimnol.*, 65, 369–375, <https://doi.org/10.1007/s10933-020-00172-8>, 2021.
- Telford, R. J., Heegaard, E., and Birks, H. J. B.: The intercept is a poor estimate of a calibrated radiocarbon age, 14, 296–298, <https://doi.org/10.1191/0959683604hl707fa>, 2004.
- 1155

- Thanos, C.: Research Data Reusability: Conceptual Foundations, Barriers and Enabling Technologies, 5, 2, <https://doi.org/10.3390/publications5010002>, 2017.
- 1160 Tolstobrov, D., Tolstobrova, A., Kolka, V., Korsakova, O., and Subetto, D.: Putative Records Of The Holocene Tsunami In Lacustrine Bottom Sediments Near The Teriberka Settlement (Kola Peninsula, Russia), Proc. Karelian Res. Cent. Russ. Acad. Sci., 06, 92, <https://doi.org/10.17076/lim865>, 2018.
- Tolstobrova, A., Tolstobrov, D., Kolka, V., and Korsakova, O.: Late Glacial And Postglacial History Of Lake Osinovoye (Kola Region) Inferred From Ssdimentary Diatom Assemblages, Proc. Karelian Res. Cent. Russ. Acad. Sci., 89, 106, <https://doi.org/10.17076/lim305>, 2016.
- 1165 Trachsel, M. and Telford, R. J.: All age–depth models are wrong, but are getting better, 27, 860–869, <https://doi.org/10.1177/0959683616675939>, 2017.
- Vyse, S. A., Herzsuh, U., Andreev, A. A., Pestryakova, L. A., Diekmann, B., Armitage, S. J., and Biskaborn, B. K.: Geochemical and sedimentological responses of arctic glacial Lake Ilirney, chukotka (far east Russia) to palaeoenvironmental change since ~51.8 ka BP, Quat. Sci. Rev., 247, 106607, <https://doi.org/10.1016/j.quascirev.2020.106607>, 2020.
- 1170 Vyse, S. A., Herzsuh, U., Pfalz, G., Pestryakova, L. A., Diekmann, B., Nowaczyk, N., and Biskaborn, B. K.: Sediment and carbon accumulation in a glacial lake in Chukotka (Arctic Siberia) during the Late Pleistocene and Holocene: Combining hydroacoustic profiling and down-core analyses, 18, 4791–4816, <https://doi.org/10.5194/bg-18-4791-2021>, 2021.
- 1175 Wagner, B., Melles, M., Hahne, J., Niessen, F., and Hubberten, H.-W.: Holocene climate history of Geographical Society Ø, East Greenland — evidence from lake sediments, Palaeogeogr. Palaeoclimatol. Palaeoecol., 160, 45–68, [https://doi.org/https://doi.org/10.1016/S0031-0182\(00\)00046-8](https://doi.org/https://doi.org/10.1016/S0031-0182(00)00046-8), 2000.
- 1180 Walker, M., Johnsen, S., Rasmussen, S. O., Steffensen, J.-P., Popp, T., Gibbard, P., Hoek, W., Lowe, J., Andrews, J., Björck, S., Cwynar, L., Hughen, K., Kershaw, P., Kromer, B., Litt, T., Lowe, D. J., Nakagawa, T., Newnham, R., and Schwander, J.: The Global Stratotype Section and Point (GSSP) for the base of the Holocene Series/Epoch (Quaternary System/Period) in the NGRIP ice core, 31, 264–267, <https://doi.org/10.18814/epiiugs/2008/v31i2/016>, 2008.
- 1185 Wickham, H., Averick, M., Bryan, J., Chang, W., McGowan, L., François, R., Grolemond, G., Hayes, A., Henry, L., Hester, J., Kuhn, M., Pedersen, T., Miller, E., Bache, S., Müller, K., Ooms, J., Robinson, D., Seidel, D., Spinu, V., Takahashi, K., Vaughan, D., Wilke, C., Woo, K., and Yutani, H.: Welcome to the Tidyverse, J. Open Source Softw., 4, 1686, <https://doi.org/10.21105/joss.01686>, 2019.
- Wolfe, A. P.: A high-resolution late-glacial and early Holocene diatom record from Baffin Island, eastern Canadian Arctic, Can. J. Earth Sci., 33, 928–937, <https://doi.org/10.1139/e96-070>, 1996.
- 1190 Wolfe, B. B., Edwards, T. W. D., and Aravena, R.: Changes in carbon and nitrogen cycling during tree-line retreat recorded in the isotopic content of lacustrine organic matter, western Taimyr Peninsula, Russia, 9, 215–222, <https://doi.org/10.1191/095968399669823431>, 1999.
- Wright, A. J., Edwards, R. J., van de Plassche, O., Blaauw, M., Parnell, A. C., van der Borg, K., de Jong, A. F.

- M., Roe, H. M., Selby, K., and Black, S.: Reconstructing the accumulation history of a saltmarsh sediment core: Which age-depth model is best?, *Quat. Geochronol.*, 39, 35–67, <https://doi.org/10.1016/j.quageo.2017.02.004>, 2017.
- 1195 Zaharia, M., Xin, R. S., Wendell, P., Das, T., Armbrust, M., Dave, A., Meng, X., Rosen, J., Venkataraman, S., Franklin, M. J., Ghodsi, A., Gonzalez, J., Shenker, S., and Stoica, I.: Apache spark: A unified engine for big data processing, *Commun. ACM*, 59, 56–65, <https://doi.org/10.1145/2934664>, 2016.
- Zander, P. D., Szidat, S., Kaufman, D. S., Żarczyński, M., Poraj-Górska, A. I., Boltshauser-Kaltenrieder, P., and Grosjean, M.: Miniature radiocarbon measurements (< 150 µg C) from sediments of Lake Żabińskie, Poland: effect of precision and dating density on age–depth models, 2, 63–79, <https://doi.org/10.5194/gchron-2-63-2020>, 2020.
- 1200 Zhdanova, A. N., Solotchina, E. P., Solotchin, P. A., Krivonogov, S. K., and Danilenko, I. V.: Reflection of Holocene climatic changes in mineralogy of bottom sediments from Yarkovsky Pool of Lake Chany (southern West Siberia), *Russ. Geol. Geophys.*, 58, 692–701, <https://doi.org/10.1016/j.rgg.2016.07.005>, 2017.
- 1205 Zolitschka, B., Francus, P., Ojala, A. E. K., and Schimmelmann, A.: Varves in lake sediments - a review, *Quat. Sci. Rev.*, 117, 1–41, <https://doi.org/10.1016/j.quascirev.2015.03.019>, 2015.