

The marine reservoir age of Greenland coastal waters

Christof Pearce¹, Karen Søby Özdemir¹, Ronja Forchhammer¹, Henrieka Detlef¹, Jesper Olsen²

¹Department of Geoscience, Arctic Research Centre and iClimate, Aarhus University, Høegh Guldbergs Gade 2, 8000 Aarhus, Denmark

5 ²Aarhus AMS Centre, Department of Physics and Astronomy, Aarhus University, 8000 Aarhus C, Denmark

Correspondence to: Christof Pearce (christof.pearce@geo.au.dk)

Abstract.

Knowledge of the marine reservoir age is fundamental for creating reliable chronologies of marine sediment archives based on radiocarbon dating. This age difference between the ¹⁴C age of a marine sample and that of its contemporaneous atmosphere is dependent on several factors, among others ocean circulation, water mass distribution, terrestrial runoff, upwelling, sea-ice cover and is therefore spatially heterogeneous. Anthropogenic influence on the global isotopic carbon system, mostly through atmospheric nuclear tests, has complicated the determination of the regional reservoir age correction ΔR , which therefore can only be measured on historic samples of known age. In this study we expand on the few existing measurements of ΔR for the coastal waters around Greenland, by adding 92 new radiocarbon dates on mollusks from museum collections. All studied mollusk samples were collected during historic expeditions of the late 19th and early 20th centuries and besides coastal sites around Greenland, the dataset also includes localities from the western Labrador Sea, Baffin Bay, and the Iceland Sea. Together with existing measurements, the new results are used to calculate average ΔR values for different regions around Greenland, all in relation to Marine20, the most recent [marine](#) radiocarbon calibration curve. To support further discussions and comparison with previous datasets, we ~~introduce~~ [use](#) the term ΔR_{13} where the suffix 13 refers to the previous calibration curve Marine13. Our study explores the links between the marine reservoir age and oceanography, sea ice cover, water depth, mollusk feeding habits, and the presence of carbonate bedrock. Although we provide regional averages, we encourage people to consult the full catalogue of measurements and determine a suitable ΔR for each case individually, based on the exact location including water depth. Despite this significant expansion of the regional reservoir age database around Greenland, data from the northern coast, directly bordering the Arctic Ocean remains missing.

25 1 Introduction

1.1 Radiocarbon dating of marine samples

The most common method for obtaining ages of sediments younger than 50 thousand years is radiocarbon dating. This method relies on the uptake of radiocarbon (¹⁴C) by plants and animals in equilibrium with their environment and, following death of the organism, the subsequent disconnection between them. The ¹⁴C in the sample then decays to ¹⁴N through beta emission with a half-life of 57030 years (Audi et al., 2003). Provided the carbon within the sample has remained a closed system, and

the initial ^{14}C activity is known, the remaining ^{14}C concentration of the sample can be used to calculate its age. To account for the temporal variations in ^{14}C concentration in the atmosphere and oceans, radiocarbon dating relies on calibration data, which enables the conversion to calibrated ages (Heaton et al., 2021). The most recent such calibration datasets are IntCal20 (Reimer et al., 2020), SHCal20 (Hogg et al., 2020), and Marine20 (Heaton et al., 2020), for northern hemisphere atmospheric, southern hemisphere atmospheric, and marine samples, respectively. For the purpose of radiocarbon dating, the atmosphere is considered to be well-mixed, with a uniform global distribution of ^{14}C content in each hemisphere. In contrast, the ocean is a more heterogeneous environment due to spatially varying stratification and upwelling intensity and the overall relatively slow mixing of water masses. The intermediate and deep ocean are typically much more depleted in ^{14}C compared to the surface ocean, which can lead to differences in radiocarbon age of centuries to millennia across the water column (Broecker et al., 1960; Matsumoto, 2007). The age of the surface ocean is thus influenced by different carbon reservoirs each with their own ^{14}C content, a phenomenon called the reservoir effect (Stuiver and Braziunas, 1993). The reservoir age is time-dependent, termed $R(t)$, and is defined as the difference between the radiocarbon age of a sample from within the reservoir and the age of the contemporaneous atmosphere (Stuiver et al., 1986). In the Marine20 calibration dataset, the modelled global average marine reservoir age is approximately 550 years (Heaton et al., 2020), but this value varies spatially due to differences in ocean circulation, upwelling, runoff, and gas exchange with the atmosphere. When calibrating marine radiocarbon dates, this spatial heterogeneity is accounted for by applying a regional reservoir age correction, ΔR (Reimer and Reimer, 2001; Stuiver et al., 1986), which is defined as the contemporaneous difference between the ^{14}C age of the reservoir and the global marine calibration curve, e.g. Marine20 or Marine13.

In principle, ΔR could be calculated from the radiocarbon age of a modern marine sample, but anthropogenic contamination has complicated this approach on recent samples (Mangerud, 1972). Increased input of ^{14}C from bomb testing (Hesshaimer et al., 1994), ~~and, to a lesser extent, injection of ^{14}C -depleted CO_2 from the burning of fossil fuels (Suess, 1955),~~ have made it impossible to measure the modern reservoir age of the surface ocean. To determine ΔR , we therefore rely on samples that predate the contamination (ca. 1950 CE), and where the age of the sample is known or independently determined through either tephrochronology (Pearce et al., 2017; Austin et al., 1995; Olsen et al., 2014), U-Th dating of corals (Hua et al., 2015), or paired marine/terrestrial dating (Ascough et al., 2005). The most common approach based on recent samples of known age is the use of museum collections where typically the exact locality, date and other collection details are available and reliable. Several hundred different studies ~~were~~ have been made to study the local reservoir age, and an overview of all shallow water (<75m) samples is provided online at The Marine Reservoir Database (Reimer and Reimer, 2001). This database is continuously updated and maintained, and currently more than 1000 data entries for the regional reservoir correction are listed, together with relevant metadata. The coverage is global, but not evenly distributed geographically, and some regions (e.g. Western Africa, North Siberia, parts of Greenland) are represented by only very few sample stations (Alves et al., 2018; Reimer and Reimer, 2001).

1.2 The Marine20 calibration curve

The publication of the most recent marine radiocarbon calibration curve Marine20 (Heaton et al., 2020), introduced a new global average for the marine reservoir age compared to previous such datasets, including its predecessor Marine13 (Reimer et al., 2013). The globally averaged value of the reservoir age in the Marine20 model is significantly higher (about 155 years) compared to Marine13, which made it necessary to recalculate ΔR values so they could be used with the new Marine20 curve (Heaton et al., 2020). This has led to some confusion, however, since the paleoceanography community had gotten used to referring to regional reservoir correction values relative to the Marine13 or previous calibration curves (see also discussion in Pieńkowski et al., 2022). Calibration of a radiocarbon date using the Marine20 curve but corrected by an old (pre-2020) ΔR value, simply results in the wrong final calibrated age so it is crucial to use the appropriate updated ΔR value for the new curve. Examples of circum-Greenland studies where Marine20 was used, while the ages were corrected by an outdated ΔR value are plenty (Olsen et al., 2022; Devendra et al., 2022; Sha et al., 2022; Peral et al., 2022; Allaart et al., 2021) and this has unfortunately lead to errors in the final age models. To simplify the discussion and to enable us to cite previously used regional reservoir age correction values, we ~~introduce~~ use the term ΔR_{xx} where xx stands for the publication year of calibration curve. If no suffix is included, the term ΔR is here meant relative to the newest calibration curve Marine20. As an example, in Disko Bay, a regional reservoir correction of 140 ± 35 ^{14}C years based on measurements of pre-bomb *Astarte* mollusks (McNeely et al., 2006; Lloyd et al., 2011) has been used in multiple paleoceanographic studies (Moros et al., 2016; Krawczyk et al., 2017; Li et al., 2017; Ouellet-Bernier et al., 2014). From here onwards, we would cite such values as $\Delta R_{13} = 140 \pm 35$ ^{14}C years, here referring to the Marine13 curve. In this case of Disko Bay, the new correction value relative to Marine20 based on the same two mollusk samples is $\Delta R = 20 \pm 76$ ^{14}C years (Reimer and Reimer, 2001). Thus, although the total reservoir age R has not changed, the regional reservoir correction ΔR is different because of the different calibration curves used.

1.3 The Marine20 curve in polar regions

The most recent marine calibration curve update (Marine20) made it explicit that the calibration curve does not apply for calibration of samples from polar regions (Heaton et al., 2020). This is of course, a particular challenge for studies focusing on Greenland. The main reason to avoid Marine20 outside latitudes from $40^\circ \text{S} - 40^\circ \text{N}$ is the variability of air-sea gas exchange due to changes in sea-ice cover and other local changes in surface water ^{14}C concentrations in these cold regions. Especially in glacial periods, extensive sea-ice cover would reduce ventilation and can lead to significant increases in the local reservoir age of over 1000 years compared to modern values (Heaton et al., 2020). This limitation of using radiocarbon dating of marine samples from high latitudes is however not unique to the latest Marine20 dataset; it has been true for previous calibration curves as well, although not as explicitly mentioned. Simple box models have shown a consistent link between sea-ice cover and the radiocarbon reservoir age (Bard et al., 1994), and high-resolution studies using tephrochronology coupled with radiocarbon dates have documented North Atlantic reservoir ages of > 2000 years during deep stadials of MIS3 (Olsen et al., 2014). Despite the advice against using Marine20 in polar regions, it has already been used extensively for this purpose since

95 its publication (Pados-Dibattista et al., 2022; Glueder et al., 2022; Hansen et al., 2022; El bani Altuna et al., 2021; Brouard et
al., 2021; Stevenard et al., 2022; Davies et al., 2022; Jackson et al., 2022). Since publication of Marine20, a more recent paper
by the same main authors has now been published and clarifies this issue. Heaton et al. (2023) state that their warning about
using the marine calibration curve in polar regions also applies to previous versions and is not something new and unique to
Marine20. The latest advice is now to use, with caution, the Marine20 calibration curve for polar samples of Holocene age
100 (interglacial, non-¹⁴C-depleted surface ocean), and to use it as a lower bound for calibration samples from glacial periods
during which the surface oceans may be more depleted (Heaton et al., 2023). This additional challenge with calibration of
polar marine radiocarbon dates, emphasizes the importance of studies such as the one presented here, aiming to expand the
knowledge of spatial variability of ΔR in these regions.

1.4 The marine reservoir age around Greenland

105 As anywhere else in the marine realm, the regional radiocarbon reservoir age around Greenland is influenced by ocean currents,
terrestrial runoff, mixing of water masses of different ages, and variable exchange between the surface ocean and atmosphere.
In the Arctic, the latter is heavily influenced by the presence of sea ice, which may inhibit mixing between surface waters and
the overlying air. Greenland has perennial sea-ice cover along its northern coastline while the southern coast typically
experiences year-round ice-free conditions. These contrasting sea-ice conditions create a pattern of older surface waters along
110 the Arctic Ocean and younger waters at the lower latitudes coastal waters facing the North Atlantic Ocean. In the surface
ocean, East Greenland is characterized by Polar Water flowing out from the Arctic Ocean through the Fram Strait with the
East Greenland Current. Similarly, Northwest Greenland receives Polar Water coming through the Nares Strait and the
Canadian Arctic Archipelago, also containing a larger share of older Pacific Water, originating from the Bering Strait (Jones
et al., 2003). This pattern is further complicated, however, by the presence of well-ventilated, and thus younger, Atlantic waters
115 that occupy the subsurface waters. Atlantic water is known to reach the Greenlandic coast in many locations, typically driven
by the bathymetry, e.g. where deep glacially-formed cross-shelf troughs allow this subsurface water connection (Schaffer et
al., 2020; Sutherland et al., 2013; Millan et al., 2018). The perceived reservoir age correction ΔR as measured on certain
organisms may also be impacted by the presence of carbonate bedrock in the area. This is of particular influence on deposit
120 2013; Forman and Polyak, 1997).

Existing measurements of regional marine reservoir age ΔR values from coastal waters of Greenland are relatively sparse and
highly clustered around a few localities such as Disko Bay and Scoresby Sound (Hjort, 1973; McNeely et al., 2006; Tauber
and Funder, 1975). In the north, no data at all exists above latitudes of 77° and 79° N, in East and West Greenland, respectively
125 (Reimer and Reimer, 2001). In the south, between 68° N and down to Greenland's southernmost point at Cape Farewell, only
4 measurements exist and are almost exclusively on ~~marine~~ mammals (polar bears and humans) for which the feeding area and
marine fraction of their diet is not exactly known (Olsson, 1980). This heterogeneously spaced dataset has allowed different

studies to use various values for the regional reservoir correction. In studies of Holocene paleoceanography offshore Greenland, the most commonly used value for the reservoir age correction (prior to publication of Marine20), $\Delta R_{13} = 0$ ^{14}C years, depending on the year of publication either as ΔR_{04} , ΔR_{09} , or ΔR_{13} (Knudsen et al., 2008; Levac et al., 2001; Jensen et al., 2004; Lassen et al., 2004; Nørgaard-Pedersen and Mikkelsen, 2009; Andresen et al., 2011; Seidenkrantz et al., 2008; Lloyd, 2006; Moros et al., 2006; Møller et al., 2006; Andrews and Jennings, 2014; Andresen et al., 2013). In Disko Bay, West Greenland, Lloyd et al. (2011) argued for $\Delta R_{09} = 140 \pm 30$ ^{14}C years which was subsequently used in following studies close to the study site (Moros et al., 2016; Krawczyk et al., 2017; Perner et al., 2013; Ouellet-Bernier et al., 2014; Li et al., 2017) as well as the wider region all the way to Sissimut in the south (Erbs-Hansen et al., 2013) and Upernavik in the north (Hansen et al., 2020). In East Greenland, some studies have differentiated between sites north and south of the Denmark Strait. Jennings et al. (2011) used $\Delta R_{09} = 0$ ^{14}C years on the shelf south of Denmark Strait based on the occurrence of several tephra layers, and $\Delta R_{09} = 149 \pm 99$ ^{14}C years north of Denmark Strait, arguing for a stronger influence of older Polar Water at higher latitudes. A recurring argument for using a ΔR value of 0 ^{14}C years is the presence of young Atlantic waters in the subsurface corresponding to the sediment coring location (Andresen et al., 2013), while others have suggested that using the ΔR value of 0 ^{14}C years can be considered as a minimum and therefore calibrated ages may be too old (Andrews and Jennings, 2014).

1.5 Aim of this study

To allow determination of leads and lags in the climate system over long time scales, there is a need for robust correlations between geological archives from different environments. These correlations between marine, terrestrial, and ice-core records rely on independent, accurate and precise determinations of the age of sediment layers. In the marine environment, one of the main sources of errors in chronology is knowledge of the regional marine reservoir age correction (Alves et al., 2018). The spatial and temporal heterogeneity of this parameter requires local calibrations, and the present understanding of the modern ΔR values around Greenland is based on a relatively small number of samples. Besides the low number of available measurements of ΔR , a regional synthesis of the data is lacking for Greenland. Several such investigations exist for neighbouring regions, including Arctic Canada (Coulthard et al., 2010; McNeely et al., 2006; Pieńkowski et al., 2022a) and the northeastern North Atlantic (Mangerud et al., 2006). The aim of this study is to improve the current estimates of the regional reservoir age around Greenland and to summarize new and existing data into regional recommendations for use with the latest Marine20 calibration curve.

2 Materials and Methods

2.1 Museum sampling

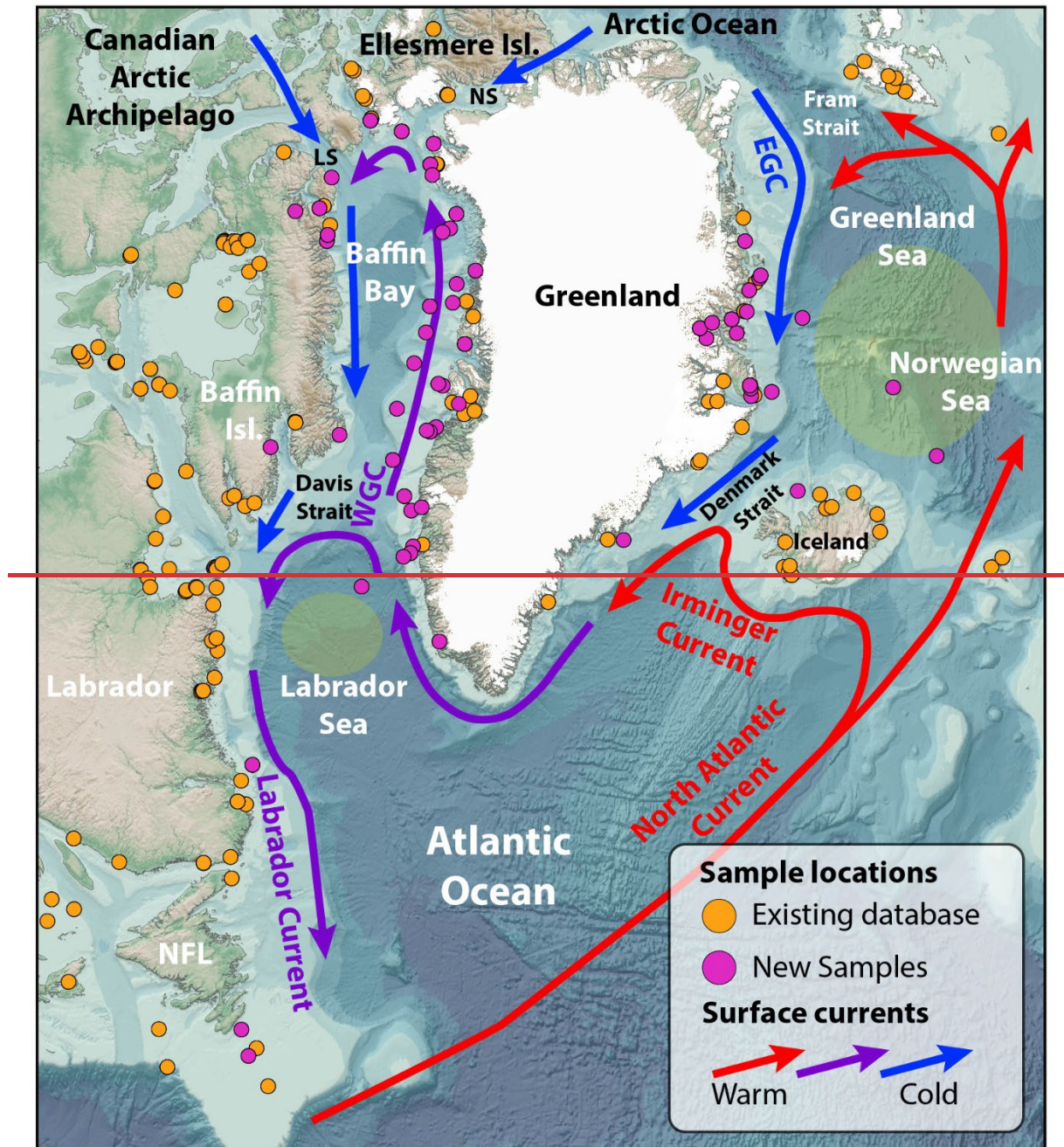
Molluske samples were collected from the zoology divisions of the Swedish Museum of Natural History (SMNH) in Stockholm, Sweden and the Natural History Museum of Denmark (NHMD) in Copenhagen, Denmark. At the SMNH, a combination of a digital database and written catalogues was used to identify potential samples before sampling from the

collections. At the NHMD, a lack of such catalogues meant that all samples were selected and sampled directly by visiting the sample storage facilities and manual inspection of labelled sample containers. In both museums, for selecting suitable mollusk samples, the following criteria were considered:

- Geographic location listed by coordinates (descriptive locations were excluded)
- Location in circum-Greenland waters in the broadest sense (incl. Greenland Sea, North Atlantic Ocean, Labrador Sea, Baffin Bay)
- Known year of sampling and age no younger than 1950 CE
- Sufficient material available so at least 1 intact specimen could be left in the museum collection

A total of 92 samples were included in this study from coastal and shelf waters of Newfoundland, Labrador, Baffin Island, Greenland, and a few open ocean localities in the Labrador Sea and Greenland Sea (Fig. 1). The collection year of the samples ranges between 1865 and 1931 CE, so well before the introduction of bomb-derived ¹⁴C into the global carbon cycle (Hesshaimer et al., 1994). The samples were retrieved during various historic expeditions (Supplementary Table), with most specimens collected during the following 4 sampling campaigns: Ellis Nillson on the Scottish whaling ship *Eclipse* in 1894 to the northern Baffin Bay, Fredrik von Otter on the *Ingegerd* and *Gladan* Expedition of 1871 to the Labrador Sea and Baffin Bay, Alfred Gabriel Nathorst on the *Antarctica* to East Greenland in 1899, and Eigil Riis-Carstensen on the *Godthåb* Expedition of 1928 to the Labrador Sea and Baffin Bay (Liljequist, 1993; Nathorst, 1900; Riis-Carstensen, 1929; Stolpe, 1894).

Most samples (n=75) were taken from the so-called wet collections, i.e. stored in ethanol, but some dry samples (n=17) from the SMNH were included in this study as well. The dry samples were not studied in detail for signs of exposure or reworking, such as color changes, or remains of soft tissue, or any other evidence of age of death before collection. In all wet samples, mollusk soft tissue was present before further processing, ensuring the specimens were alive at the time of sampling. Specimens were transferred to plastic sample containers and transported to Aarhus University for further processing.



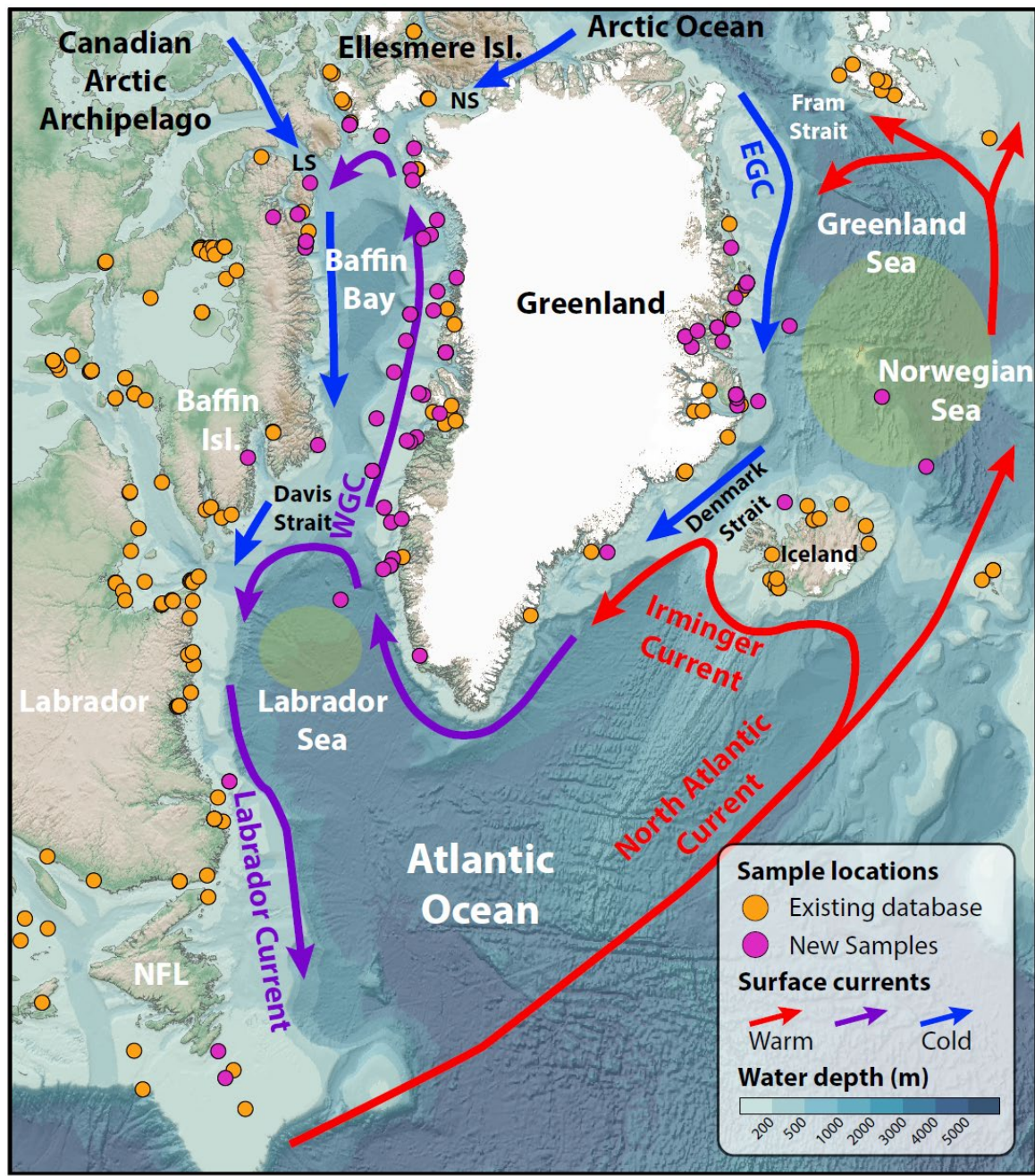


Figure 1. Map of Greenland and the northern North Atlantic Ocean, with ocean currents and location of all samples analyzed in this study together with those of the existing ΔR database (Reimer and Reimer, 2001). Areas of deep convection in the Labrador Sea and north of Iceland are ~~colored~~ shaded light greenyellow. LS: Lancaster Sound, NS: Nares Strait, NFL: Newfoundland, WGC: West Greenland Current, EGC: East Greenland Current. Bathymetry is from GEBCO (GEBCO Bathymetric Compilation Group, 2022).

185

2.2 Laboratory pre-treatment and AMS ^{14}C dating

Wet samples were placed in a drying oven at 40 °C for several days to remove any ethanol from the shell, before any remaining dried-up soft tissue was removed from the shell. Approximately 10-15 mg of carbonate was removed from the outer, youngest part of the shell for further treatment. As some Arctic mollusks are known to have a long lifespan of decades, even up to centuries (Wanamaker et al., 2008; Selin, 2010), this sampling approach avoids the possible incorporation of older carbonate.

In case of very small mollusk samples, the entire shell was used (smallest sample 5.7 mg). To remove any surface contamination, the shells were placed in an HCl solution (1M) for 2 hours until 10-20% of the carbonate was dissolved. During this step, the samples were carefully shaken a few times to ensure the acid could access the entire sample. After acid treatment the samples were carefully rinsed three times with milliQ[®] water. Each rinsing was done with its own glass and pipette which were examined after the rinse to ensure that none of the sample was lost in the process. A small amount of water was left to lower the risk of flushing part of the sample. The samples were dried overnight to remove the excess water and then weighed. The remaining carbonate was subsequently converted to graphite and ^{14}C dated using the HVE 1MV tandemron accelerator AMS system at the Aarhus AMS Centre (Olsen et al., 2017). ^{14}C dates are reported as uncalibrated ^{14}C ages BP normalized to -25‰ according to international convention using online $^{13}\text{C}/^{12}\text{C}$ ratios (Stuiver and Polach, 1977).

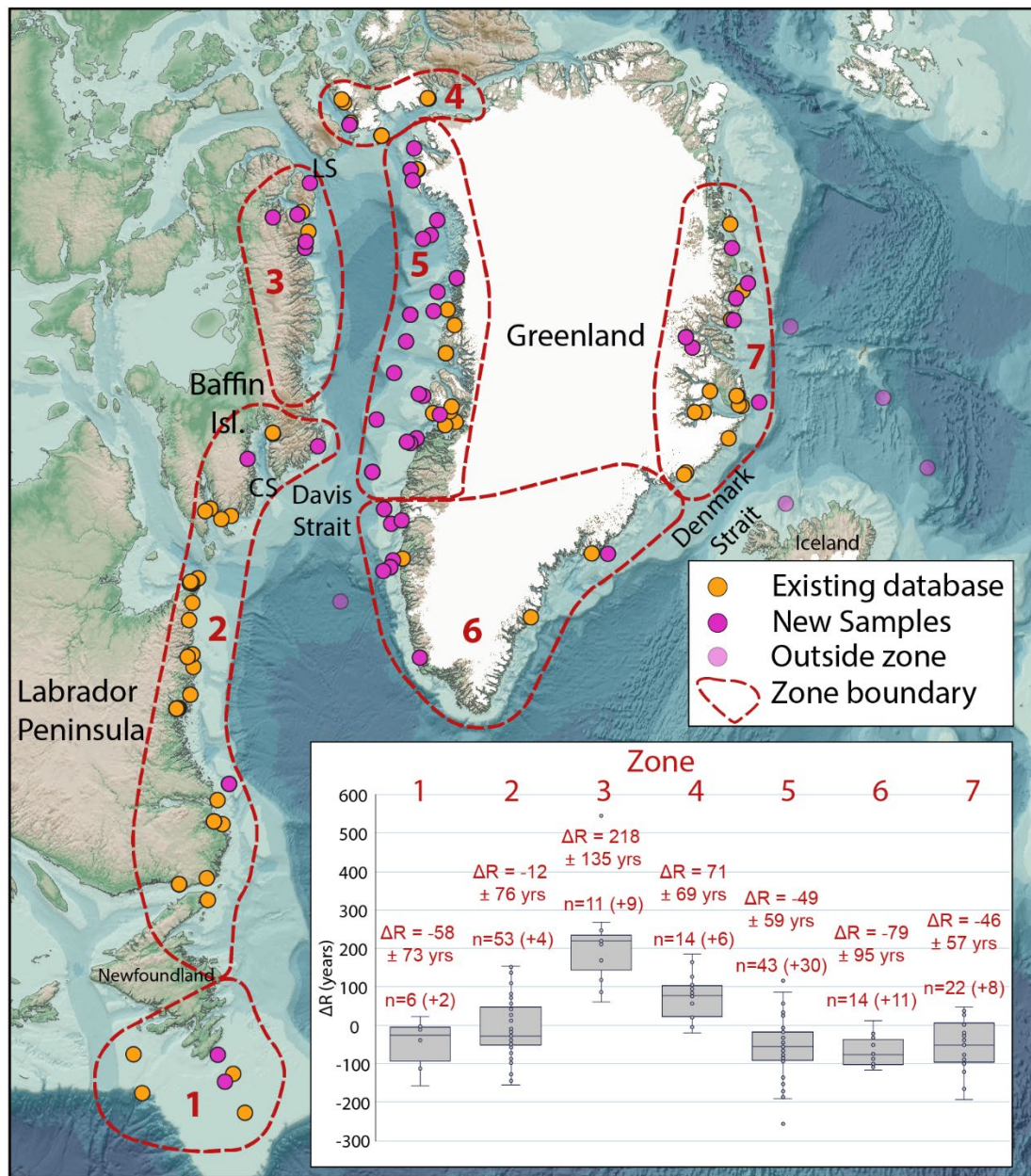
2.3 Calculation of reservoir age per sample

The local reservoir age correction ΔR was calculated for each sample as the difference between the measured radiocarbon age of the sample and the radiocarbon age of the Marine20 calibration curve (Heaton et al., 2020) corresponding to the year of collection. To avoid errors and ensure reproducibility, all calculations were performed using the online program *deltar* (Reimer and Reimer, 2017) with input of the measured radiocarbon age and associated uncertainty, and the year of sample collection, i.e. the independently known calendar age. The uncertainty of ΔR equals the uncertainty of the radiocarbon date, which therefore does not take into account the uncertainty of the marine curve (Reimer and Reimer, 2017).

2.4 Geographical zonation

To summarize the results and provide broad, regional estimates of the reservoir age corrections around Greenland, the study area was divided into 7 zones, based on prevailing ocean currents and water masses, see Figure 2. The zone boundaries are broadly consistent, but not exactly the same as in previous ΔR compilation studies in the area (McNeely et al., 2006; Coulthard et al., 2010; Pieńkowski et al., 2022a). Zone 1 covers the shelf seas south of Newfoundland, where there is a mixed influence of Atlantic Water coming from the North Atlantic Current in the south and colder waters from the north via the Labrador Current (Fig. 1). Zone 2 includes the coastal waters of the western Labrador Sea from northern Newfoundland in the south, along the Labrador Peninsula, to southern Baffin Island in the north (Fig. 2). These waters are predominantly influenced by the Labrador Current (Fig. 1), which includes a mixture of cold polar waters coming from the north and Atlantic Water

originating from the West Greenland Current as it branches across the Davis Strait (Fig. 1). Zone 3 covers the northwestern Baffin Bay and represents a cluster of samples south of Lancaster Sound (Fig. 2). It is characterized by outflow of Arctic Waters through the Canadian Arctic Archipelago and Nares Strait (Fig. 1). Zone 4 includes Jones Sound south of Ellesmere Island and Smith Sound at the southern end of Nares Strait (Fig. 2) and, similar to Zone 3, is predominantly influenced by Arctic Water. Zone 5 encompasses the northwestern coast of Greenland, from the Davis Strait in the south to Nares Strait in the north (Fig. 2). It is dominated by waters of the West Greenland Current over the shelf (Fig. 1), while the more coastal inner fjord location will be impacted from outflow from the Greenland Ice Sheet as well. Zone 6 stretches all along the coast and shelf of southern Greenland from. Its boundaries with Zone 7 and Zone 5 are set where the Irminger Current merges with the East Greenland Current, to where the West Greenland Current branches across the Davis Strait, respectively (Fig. 1). Finally, Zone 7 covers the coastal waters of northeast Greenland, including several sites inside deep fjord systems (Fig. 2). This region is dominated by the East Greenland Current carrying polar surface waters from the Arctic Ocean through the Fram Strait, underlain by recirculated warmer Atlantic Water at water depths >100m (Fig. 1). Five samples that were analyzed in this study fell outside of the zonation: 3 from deep sites in the Greenland Sea and Norwegian Sea, one from northern Iceland, and one from a deep site in the Labrador Sea (Figure 2).



235 Figure 2. Map of study area with boundaries of geographic zones and locations of all samples used for calculations (wet collection only). The insert shows zonal average ΔR values, based on all data points except the four that fall outside of the zone boundaries in the Greenland, Iceland, and Norwegian Seas. The box and whiskers charts show the interquartile range (box), the minimum and maximum values (whiskers), and the median value (midline in box). The values shown in red for each zone are the weighted mean values and uncertainty as described in the methods and also listed in Table 1. The number of data

points is given for each zone, including the number of new values obtained in this study, listed in brackets. LS: Lancaster Sound, CS: Cumberland Sound.

240 2.5 Regional mean reservoir age correction estimates

To provide an average value and uncertainty for each of the regions, we followed the standard methodology as also applied in the Marine Reservoir Age Database (Reimer and Reimer, 2001) to calculate weighted means while incorporating the uncertainty of the original data. For each zone we calculate the ΔR as the weighted mean value using (Bevington and Robinson, 1969):

$$245 \quad \Delta R_w = \frac{\sum \Delta R_i / \sigma_i^2}{\sum 1 / \sigma_i^2} \quad (1)$$

where ΔR_i and σ_i are the mean value and uncertainty of calculated local reservoir age offset of sample i. The uncertainty of the weighted mean ΔR values is calculated as:

$$250 \quad \sigma_w = \sqrt{\frac{1}{\sum 1 / \sigma_i^2}} \quad (2)$$

Where the subscript w indicates that the uncertainty is calculated d using the ~~error~~ uncertainty of each ΔR_i . Further we calculated the standard deviation as:

$$255 \quad \sigma_{std} = \sqrt{\frac{\frac{1}{n-1} \sum \left(\frac{\Delta R_i - \Delta R_w}{\sigma_i} \right)^2}{\frac{1}{n} \sum \frac{1}{\sigma_i^2}}} \quad (3)$$

Where n is number of samples and ΔR_w is the regional weighted mean ΔR value.

No form of outlier analyses was performed and all available data, both previously published and new results were included in the zonal mean values. To account for the larger than statistically expected variability in some of the ΔR_w values we take the maximum value of σ_w or σ_{std} as the uncertainty on the ΔR_w values.

3.1 Wet vs dry museum mollusk collections

All dry samples analyzed in this study (n=17) are from the same region along the East Greenland coast between 70° and 75° N (Figure 2). Mollusks stored in ethanol were analyzed from the same region, which allows comparison between the two samples sets based on their preservation. Although some radiocarbon dates indicate compatible ΔR values, there is a clear difference between the two datasets, with the dry samples being significantly older than the wet (Suppl. Fig. 2). At a single location, a dry sample (#83, Suppl. Table 1) returned $\Delta R = 1141 \pm 27$ ^{14}C years, which is > thousand years older than others from the same site (Suppl. Fig.2). There is no certainty that the dry samples were collected alive, and they are therefore considered unreliable for the purpose of determining the local marine reservoir age. All dry samples are excluded from further discussion in this paper, and all reporting of results from here onwards are of wet-preserved samples only.

270 **3.2 Results summary**

For the entire study area of coastal Greenland, including the Labrador Sea and Baffin Bay, the newly obtained values for ΔR range from -172 to 546 ^{14}C years, with a median value of $\Delta R = -39$ ^{14}C years. The geographical range of the samples reaches from 46 °N south of Newfoundland to approximately 76 °N and 77 °N, on the eastern and western Greenlandic shelf, respectively (Fig. 1). The majority of new samples are from West Greenland, originating mostly from the 1928 Godthåb Expedition (Riis-Carstensen, 1929). Whereas samples in the online marine reservoir correction database are generally restricted to shallow water depths <75m (Reimer and Reimer, 2001), our new samples represent the broader coastal shelf settings and expand to water depths of typically several hundred meters (Figure 1, Supplementary Table 1). The full depth scale of the newly dated samples ranges from a black mussel collected on the beach in Cumberland Sound (*Musculus niger*, Sample #5, Supplementary Table 1), to a gastropod collected from 2750 meter water depth (mwd) in the northern central Labrador Sea (*Buccinum abyssorum*, Sample #61, Suppl. Table 1).

3.3 Reservoir age offsets per region

The new data for the regional marine reservoir age offsets (ΔR) are here reported for each region, as defined in the methods section, and illustrated in Figure 2. The results of the 75 newly dated mollusk samples from wet collections are combined with previously existing data from the marine reservoir correction database (Reimer and Reimer, 2001). The results per zone are summarized in Table 1. Although there is overlap between the new ΔR values from the entire study area, there are also clear differences between specific zones. The weighted mean ΔR values for all zones fall between 0 and -100 ^{14}C years, except for Zones 3 and 4, where the ΔR values are higher. The highest values occur in Zone 3, south of Lancaster Sound (Figure 2), with a mean ΔR value for this zone of 218 ^{14}C years. The mean values for Greenland coastal waters from all three zones (East, West, and South) all overlap within the calculated uncertainties (Table 1).

Table 1. Summary of regional ΔR values. Total samples include existing and new samples from this study (amount listed in parentheses). Range, weighted means, and uncertainties are calculated on the full dataset. Zone numbers refer to Figure 2.

Zone #	Region	Total samples	ΔR Range (^{14}C years)	Weighted mean (^{14}C years)
1	Newfoundland	6 (+2)	-158 to 22	-58 \pm 73
2	W. Labrador Sea	53 (+4)	-154 to 154	-12 \pm 76
3	NW Baffin Bay	11 (+9)	60 to 546	218 \pm 135
4	S. Nares Strait	14 (+6)	-20 to 186	71 \pm 69
5	West Greenland	43 (+30)	-257 to 116	-49 \pm 59
6	South Greenland	14 (+11)	-116 to 13	-79 \pm 95
7	East Greenland	22 (+8)	-194 to 49	-46 \pm 57

Five new samples fall outside the geographical zone boundaries: #65, #66, and #75 from the Norwegian Sea and Greenland Sea, #64 from the shelf north of Iceland, and #61 from the central Labrador Sea. These 5 are mostly from deeper sites (>1500 mwd), except for Sample #64 which is from 388 mwd (Suppl. Figure 1, Suppl. Table 1). All these deep samples returned relatively young ages, i.e. $\Delta R < 0$ years, including the deepest sample (#61 from 2750 mwd) which returned one of the lowest values of ΔR in the entire dataset ($\Delta R = -149 \pm 27$ ^{14}C years).

4 Discussion

The new results obtained in this study are overall in good agreement with previously existing measurements of the reservoir age offsets around Greenland and eastern Canada. There is significant overlap between existing and new measurements, and therefore this expansion adds to the reliability of regional estimates, but the new data also include many localities for which previously no information was available. The new measurements mostly come from shallow coastal locations, but also includes many sites on the shelf with water depths >100 m. This spatial expansion of available data is key for paleoceanographical studies as they are often based on sediment cores from deeper shelf locations where deglacial – Holocene sediments are dated using benthic organisms (e.g. mollusks or benthic foraminifera). The discussion presented here includes the relation of ΔR to water mass, water depth, sea-ice cover, and local variability within small areas, but it is not exhaustive, and the reader is encouraged to consult the complete tables of results in the supplementary information to investigate specific cases.

4.1 Spatial patterns and ocean circulation

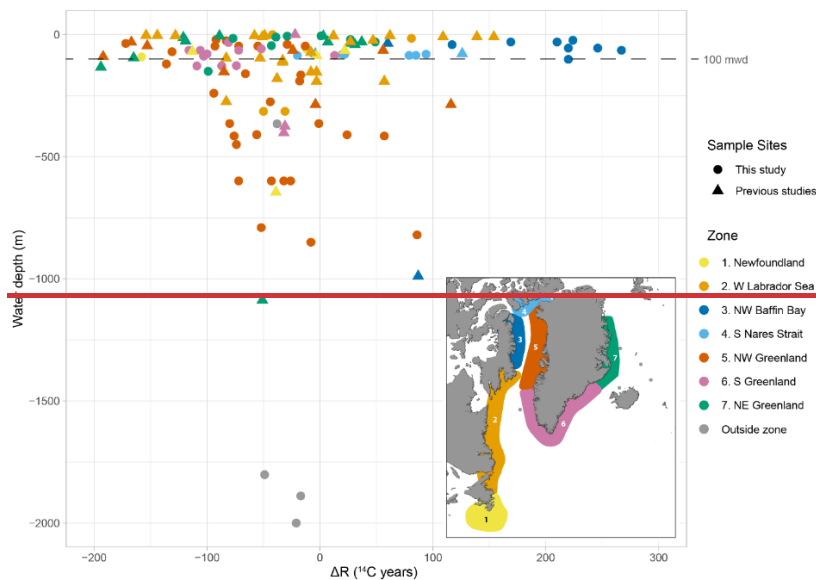
The overall results as shown in Figure 2 are consistent with the ocean circulation patterns around Greenland, but there are also some notable observations. As expected, the lowest ΔR values are found in regions where Atlantic Water prevails: Zone 1 south of Newfoundland and Zone 6 in southern Greenland, along the path of the Irminger / West Greenland Current (Figure 1). The oldest waters or highest ΔR values are found along Baffin Island and in the northernmost Baffin Bay (Figure 2: Zones

3 & 4), a region influenced by ~~older Arctic and Pacific~~ Waters coming through the Canadian Arctic (Coulthard et al., 2010).
315 The age of the Arctic outflow is likely dependent on the water depth, with older waters of Pacific origin in the surface, and younger Atlantic waters below. This depth-dependent reservoir age in the Arctic Ocean was also found by a study from the Chukchi Sea using tephrochronology to constrain the reservoir age during the Late Holocene (West et al., 2022).The waters in Zone 2 are not only influenced by Arctic outflow, but also by the presence of carbonate in local bedrock which may further explain older radiocarbon ages (England et al., 2013). For the coastal areas surrounding Baffin Bay, there is overlap with
320 another recent reservoir age compilation study focusing on the Canadian Arctic (Pieńkowski et al., 2022a). The results are mostly compatible, as both studies show a pattern of old values along the Canadian margin and younger waters along the west Greenland coast. The zonal mean ΔR values are however not exactly the same, since this study adds 45 new radiocarbon measurements for Baffin Bay and both studies also use a slightly different geographical zonation (Pieńkowski et al., 2022a). In between the zones with mostly Atlantic versus Arctic and Pacific water influence, lie Zone 2 and Zone 5 and they show
325 intermediate values, likely the result of mixing between the two endmembers. This is seen in the high variance of the ΔR values in these zones 2 and 5, which also cover a large latitudinal range (Figure 2). Along East Greenland, remarkably, there is not a major change in local reservoir age across the Denmark Strait, which was hypothesized in other studies to be caused by the influence of the Irminger Current (Jennings et al., 2011). The calculated ΔR values for Zones 6 and 7 (Figure 2), respectively south and north of the Denmark Strait (approx. 67°N), are both well below zero and the calculated mean values
330 are not significantly different (Table 1). There is a larger variance of the ΔR values in Zone 7, however, but this is likely caused by the larger sample size and by the inclusion of many sites inside fjords in this zone (Fig. 2). Near-coastal sites inside fjords can also be influenced by terrestrial runoff which can modify the ^{14}C age of waters on a very local scale.

4.2 Water depth

By definition, the marine reservoir offset is only valid for the surface ocean, i.e. the upper part of the water column that is well-
335 mixed, with the maximum depth is set to 75 m (Stuiver et al., 1986). This same water depth cut-off value of 75 m is used in the online marine reservoir correction database at calib.org/marine (Reimer and Reimer, 2017), although some exceptions have been made and data from deeper sites outside the surface mixed layer were included in the database (Lougheed et al., 2013). The publication of the latest marine calibration curve, Marine20, mentions a water depth of 100 m for the surface ocean box in the model, thus slightly extending the depth range for the definition of the surface ocean in reservoir age calculations (Heaton
340 et al., 2020). However, despite this policy of restricting the ΔR database to the upper 75-100 m of the surface ocean, the marine calibration curves are routinely used in paleoceanography on sediment core samples from well outside of this depth range. In fjords or coastal shelf environments, water depths can easily reach several hundred meters, but planktic foraminifera or other calcifying surface ocean dwellers are often absent. The standard approach here is to resort to dating benthic organisms such as benthic foraminifera or ~~molluses~~ mollusks and apply the local reservoir correction ΔR which is originally intended for the
345 surface ocean only. Even for deep ocean sites where sediment cores are dated using planktic foraminifera one could argue that their habitat range is not restricted to the upper 75 m of the water column, but are often found below that, up to several hundred

meters water depth (Kimoto, 2015). This current study and expansion of the circum-Greenland reservoir age database is therefore not strictly limited to samples from surface waters but includes many samples from deeper sites on the shelf and even a few of the deep ocean (Figure 2). The largest range of ΔR values is found in the surface ocean above approximately 150 m (Figure 3). Below this, the spread is less pronounced and, generally, the ΔR values are closer to zero as one goes down the water column (Figure 3). When calibrating benthic dates from deeper sites in areas where information on deep water reservoir age is available, one could therefore consider excluding extreme values obtained from surface ocean samples when making the choice of which reservoir correction to apply. Not all zones include results from deeper sites however, and the decreasing ΔR variability with depth can also partially be attributed to the lower amount of data points available for deeper sites (Figure 3). The few measurements of samples from water depths beyond >1000 meter are from sites in the Greenland Sea, Norwegian Sea, and Labrador Sea (Figure 1). These are all at locations characterized by convection and formation of North Atlantic Deep Water and Labrador Sea Water (Broecker, 1991; Smethie Jr. et al., 2000), which is the likely explanation for the low ΔR values indicating deep waters younger than the average global surface ocean (Figure 3). Zone 5 also includes multiple deep sites on the northwest Greenland shelf (Fig. 2) with water depths exceeding 500 m accompanied by relatively low ΔR values (Fig. 3). These younger waters at depth could be attribute to Atlantic Water sourced from the East Greenland Current, but also possibly Labrador Sea waters, transported north into the West Greenland Current.



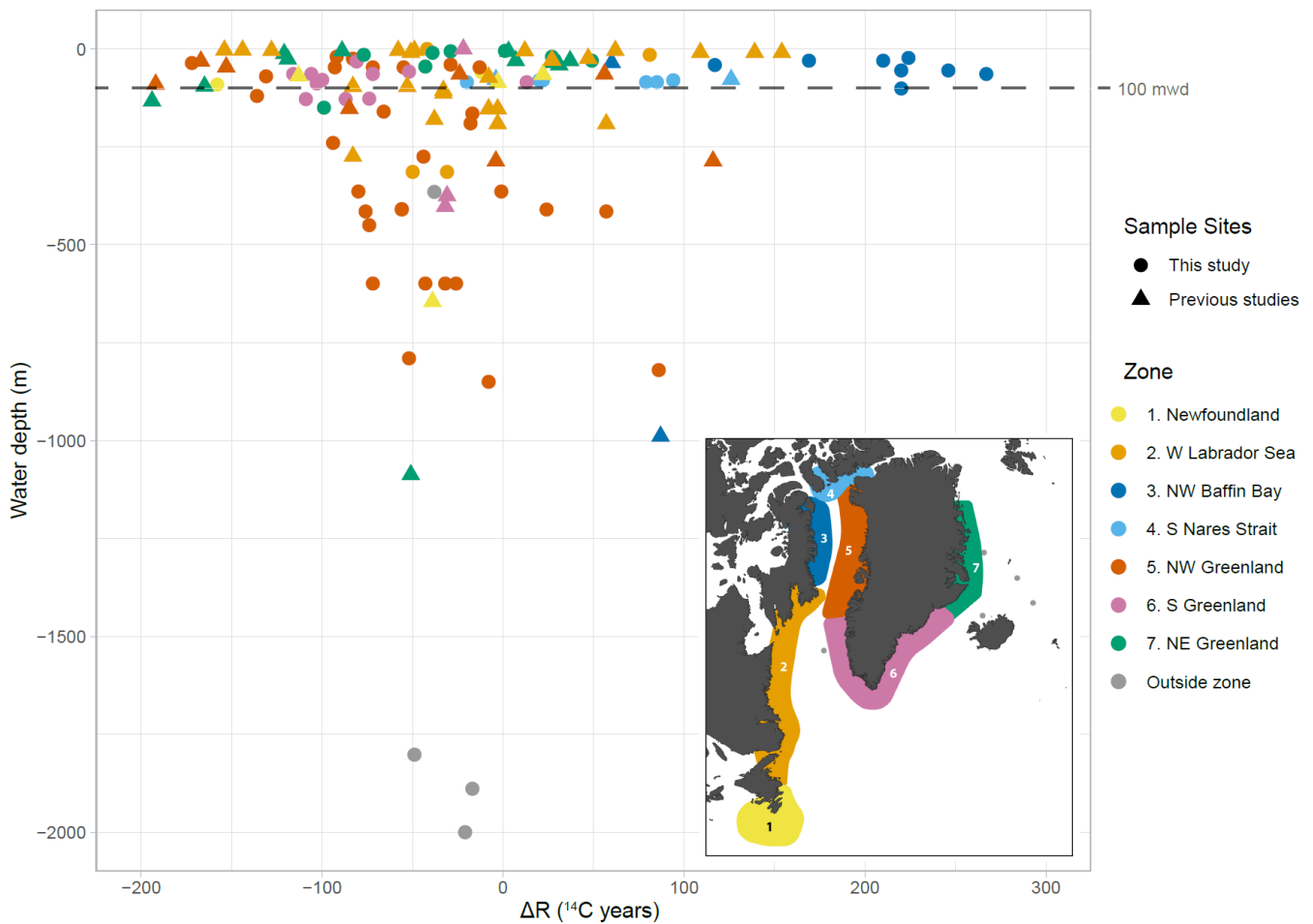
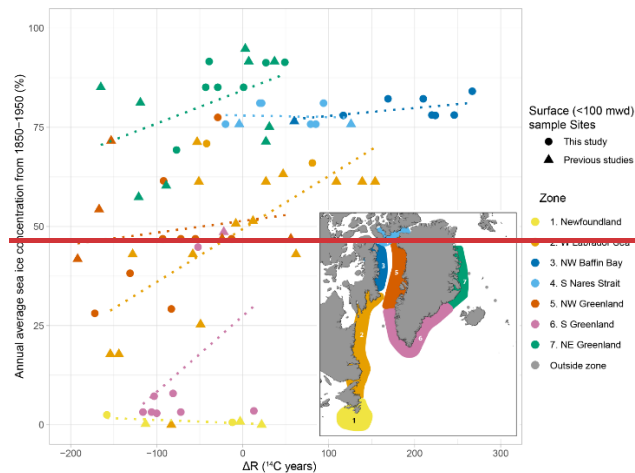


Figure 3. Scatter plot of ΔR values versus water depth of individual sites, colored according to the geographic zone shown in the insert, as defined in Figure 2. Water depth values for the new sites of this study were obtained from museum catalogues, while the water depth of previous studies was retrieved by finding the GEBCO water depth (GEBCO Bathymetric Compilation Group, 2022) for the coordinates listed in the marine reservoir database of (Reimer and Reimer, 2001). The horizontal and vertical axes are cropped at $\Delta R = 300$ years and 2000 m water depth, respectively, to improve readability of the graph. This resulted in two data points falling outside the plotted area, namely #61 ($\Delta R = -149 \pm 27$ ^{14}C yrs, 2750 mwd) and #15 ($\Delta R = 546 \pm 25$ ^{14}C yrs, 20 mwd), see also Supplementary Table 1.

4.3 Sea ice

Sea ice acts as a physical barrier between the ocean and the atmosphere and prevents the uptake of atmospheric $^{14}\text{CO}_2$ in surface waters, thereby increasing the local marine reservoir age. This link has been well-established, and is one of the main

375 reasons why the latest calibration curve Marine20 is described as not suitable for application in polar regions where sea-ice
 cover impacts the reservoir age (Heaton et al., 2020). Model experiments suggest a direct relationship between the average
 annual duration of sea-ice cover and the magnitude of the local reservoir age ΔR (Bard et al., 1994), and sea ice variability in
 the past has been found to play an important role in ΔR fluctuations on millennial time scales (Butzin et al., 2017). Sea ice
 380 perennial sea-ice cover offshore northeast Greenland, making this study area ideal for investigating the link between sea ice
 concentration and ΔR . Although there is no direct clear linear relationship between the two variables based on the entire
 dataset, the highest ΔR values are typically found in areas with elevated sea-ice cover (Figure 4). In sites with annual average
 sea-ice concentrations of less than 25%, no ΔR values higher than 50 ^{14}C years are found, and where ΔR values exceed 160
 ^{14}C years, the sea-ice concentrations are $>75\%$ (Figure 4). Within each of the individual geographic zones as defined in Figure
 385 2, several positive correlations appear (Figure 4), but there is also a the only significant positive correlation between sea-ice
 cover and reservoir age is found in Zone 2. , except for No relationship at all between the variables, or even a minor non-
 significant negative correlation is found in Zone 1 around Newfoundland with predominantly ice-free conditions and Zone 4
 around Nares Strait (Figure 4). As discussed above, there are other factors influencing the reservoir age and in this specific
 case, the region with the highest ΔR values (Zone 3, NW Baffin), is not only characterized by elevated sea ice concentrations,
 390 but also the influence of Arctic and Pacific waters, and carbonate bedrock, all together contributing to the older waters.



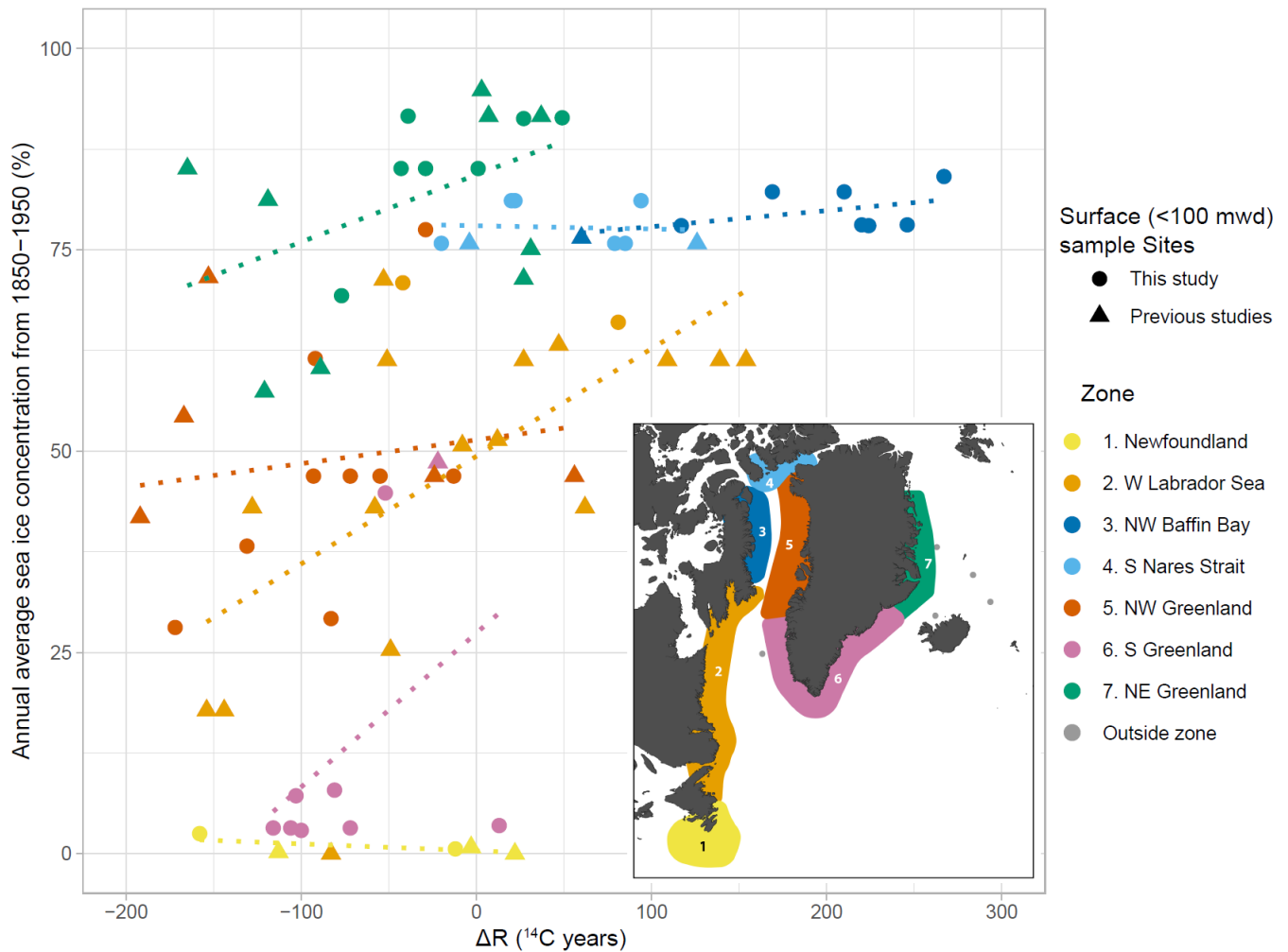


Figure 4. Scatter plot of ΔR values of surface waters (<100 mwd) versus historical sea ice concentrations of individual sites, colored according to the geographic zone shown in the insert, as defined in Figure 2. The dotted lines represent linear trend lines for each of the zones, colored accordingly. The only significant correlation is found in Zone 2, in the Western Labrador Sea. Sea ice for each site is the annual average value for the period from 1850 – 1950, derived from Walsh et al. (2017). One data point lies outside the plotted area (#15, $\Delta R = 546 \pm 25$ ^{14}C yrs, sea ice 76%), since the horizontal axis is cropped at $\Delta R = 300$ years to improve readability of the graph.

400 4.4 Mollusk feeding habits

A potential obstacle in using marine mollusks as recorders of the ^{14}C content of the surrounding ocean water is the variability of feeding habits of different species. Depending on the feeding habit, individual species may be taking up carbon from different pools. Suspension feeders, as the name implies, feed on organic matter that is suspended in the water column while

deposit feeders take up carbon from material that has settled on the sea floor. This is of great importance in areas with carbonate
405 bedrock, where sediment pore water may contain old bicarbonate which would offset the age of deposit feeding mollusks. This
phenomenon has also been called the ‘*Portlandia* effect’, named after the deposit-feeding mollusk *Portlandia arctica* which
was found to be up to several thousand years older than its suspension-feeding counterparts in a study from the Canadian
Arctic Archipelago (England et al., 2013). The circum-Greenland dataset analyzed here consists mostly of suspension feeders,
but also numerous deposit feeders. The most common suspension feeders in this study are *Astarte borealis*, *Hiatella arctica*,
410 and *Mytilus edulis*, while the most common deposit feeders are *Macoma calcaria* and *Nuculana permula* (Suppl. Table 1). A
direct comparison shows no consistent offset between the two groups, although the deposit feeders do show a tendency towards
slightly higher ΔR values (Figure 5). The highest value in the entire dataset is $\Delta R = 546 \pm 25$ years, measured on a specimen
of *Macoma calcaria* from the northern coast of Bylot Island in Lancaster Sound (Sample #15, Supplementary Fig. 1). This
anomalously high value, combined with the knowledge that it is retrieved from a deposit feeder in a region that is characterized
415 by carbonate bedrock, is thus very likely a result of the *Portlandia* effect, and the date should not be considered reliable. In
conclusion, results from the deposit feeders are mostly compatible with those from suspension feeders (Figure 5), but caution
should be taken in areas with carbonate bedrock, where the deposit feeders should be avoided.

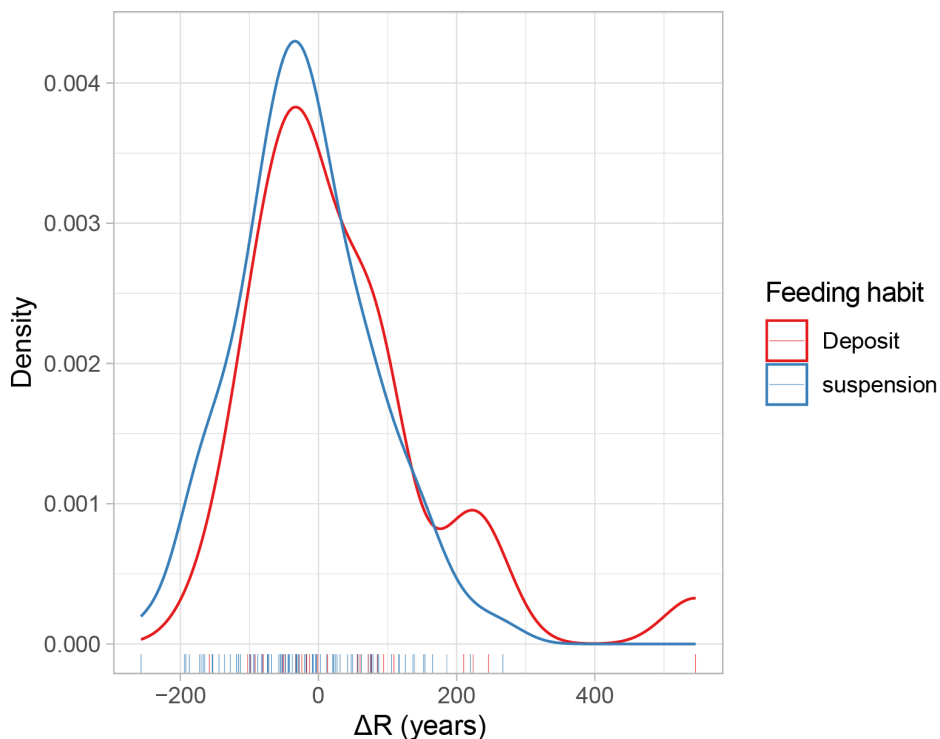


Figure 5. Density plots of ΔR values colored by feeding habit of mollusks. Deposit feeders are plotted in red (n= 27) and
420 suspension feeders in blue (n=98). Information on mollusk feeding habits was obtained from the marine radiocarbon database

(Reimer and Reimer, 2001), supplemented by information published on the World Register of Marine Species (WoRMS Editorial Board, 2023).

5 Summary and conclusions

425 This study provides a significant expansion of the available data of the marine reservoir age around Greenland and the adjacent
430 seas. All new data was obtained from radiocarbon measurements on mollusks (n=92) stored in museum collections in
Stockholm and Copenhagen. The new data includes many sites from deeper water depths, beyond the surface mixed layer
which is traditionally used for the determination of the marine reservoir age. This expansion to deeper water depths, allows
the inclusion of samples which are located further offshore, and provides a broader representation of sites that are typically
cored for paleoceanographic studies. When our new data is combined with results from previous studies in the area, the
430 following conclusions can be drawn:

- Museum sample storage: ~~As~~ the exact age of samples from “dry” collections is possibly unknown, and thus, where possible, preferably only samples with soft tissue present, stored in “wet” collections, should be used for ΔR measurements. If dry samples are the only option, they should be carefully examined for any signs of age or reworking after death (O’Connor et al., 2010).
- 435 - Water masses and ocean currents: the youngest waters are found in areas dominated by Atlantic Water, while the oldest are found in regions influenced by Arctic Ocean outflow and influence of Pacific Water.
- Water depth: The largest variance of ΔR is found in the surface waters. Further down the water column, the ΔR values become less variable and are closer to zero. In areas of deepwater formation, even sites beyond 1500 m water depth have ΔR values < 0 ^{14}C years.
- 440 - Sea ice: On a regional scale, our data suggests a clear link between sea ice cover and radiocarbon age of the underlying waters. The highest ΔR values are found in regions with high (<75%) annual sea ice cover, while areas with almost no sea ice cover have typically low ($\Delta R < 50$ ^{14}C yrs) values.
- Suspension vs. deposit feeders: In general, ΔR measurements on mollusks with either feeding habit are compatible. In regions with carbonate bedrock and the presence of old carbon, however, deposit feeders should be avoided, as
445 they are found to overestimate the radiocarbon age of the waters.

For calibration of radiocarbon dates, we provide regional averages as summarized in Table 1, but we encourage users to consult the full table of result provided in the supplementary information. This allows one to choose a ΔR value based on prevailing water masses, water depth, distance to coast, mollusk species, and other factors, all together providing a value which is as representative of the study site as possible.

450 Despite this improved estimate of the regional reservoir age around Greenland, these values remain only valid for the pre-bomb, modern situation and most likely large parts of the current Holocene interglacial. Other studies have shown large temporal variability over millennial timescales linked to major changes in ocean circulation during the last glacial – interglacial

transition (Skinner et al., 2019; Telesiński et al., 2021). Outside of the Holocene, our ΔR values provide a minimum bound for calibration of radiocarbon ages, as also suggested in Heaton et al. (2023).

455 Although we provide a large expansion of spatial coverage around Greenland, large geographic areas remain unrepresented. No data at all is available for the northern coast of Greenland bordering the Arctic Ocean, above 76 °N on East Greenland and 77 °N on West Greenland in the Nares Strait.

Competing interests

None of the authors have any competing interests.

460 Acknowledgements

Many thanks go to curators Mattias Forshage and particularly Anna Persson of the Swedish Museum of Natural History in Stockholm for providing access to the museum catalogues, the mollusk collections, and all the help with sampling. In Copenhagen, at the Zoological Museum (Natural History Museum of Denmark) we were welcomed by Tom Schiøtte, whose expertise of the Danish historical expeditions and mollusk collections was crucial for obtaining the samples needed for this study. Thanks to Alexis Geels and Mériadec Le Pabic for help with sampling, and photography of the catalogues and specimens during museum visits. Finally, many thanks to Marie Kanstrup, technician at the Aarhus AMS Centre for the help with pre-treatment and analyses of radiocarbon measurements. This project was funded by the Independent Research Fund Denmark as project funding for CLAMS (Carbon Lag of Arctic Marginal Seas) to Christof Pearce (Grant 8021-00148B).

References

470 Allaart, L., Schomacker, A., Larsen, N. K., Nørmark, E., Rydningen, T. A., Farnsworth, W. R., Retelle, M., Brynjólfsson, S., Forwick, M., and Kjellman, S. E.: Glacial history of the Åsgardfonna Ice Cap, NE Spitsbergen, since the last glaciation, *Quaternary Science Reviews*, 251, 106717, <https://doi.org/10.1016/j.quascirev.2020.106717>, 2021.

Alves, E. Q., Macario, K., Ascough, P., and Bronk Ramsey, C.: The Worldwide Marine Radiocarbon Reservoir Effect: Definitions, Mechanisms, and Prospects, *Reviews of Geophysics*, 56, 278–305, <https://doi.org/10.1002/2017RG000588>, 2018.

475 Andresen, C. S., McCarthy, D. J., Dylmer, C. V., Seidenkrantz, M.-S., Kuijpers, A., and Lloyd, J. M.: Interaction between subsurface ocean waters and calving of the Jakobshavn Isbræ during the late Holocene, *The Holocene*, 21, 211–224, <https://doi.org/10.1177/0959683610378877>, 2011.

Andresen, C. S., Hansen, M. J., Seidenkrantz, M.-S., Jennings, A. E., Knudsen, M. F., Nørgaard-Pedersen, N., Larsen, N. K., Kuijpers, A., and Pearce, C.: Mid- to late-Holocene oceanographic variability on the Southeast Greenland shelf, *The Holocene*, 23, 167–178, <https://doi.org/10.1177/0959683612460789>, 2013.

480 Andrews, J. T. and Jennings, A. E.: Multidecadal to millennial marine climate oscillations across the Denmark Strait (~ 66° N) over the last 2000 cal yr BP, *Clim. Past*, 10, 325–343, <https://doi.org/10.5194/cp-10-325-2014>, 2014.

- Ascough, P., Cook, G., and Dugmore, A.: Methodological approaches to determining the marine radiocarbon reservoir effect, *Progress in Physical Geography*, 29, 532–547, <https://doi.org/10.1191/0309133305pp461ra>, 2005.
- 485 Audi, G., Bersillon, O., Blachot, J., and Wapstra, A. H.: The Nubase evaluation of nuclear and decay properties, *Nuclear Physics A*, 729, 3–128, <https://doi.org/10.1016/j.nuclphysa.2003.11.001>, 2003.
- Austin, W. E. N., Bard, E., Hunt, J. B., Kroon, D., and Peacock, J. D.: The ^{14}C Age of the Icelandic Vedde Ash: Implications for Younger Dryas Marine Reservoir Age Corrections, *Radiocarbon*, 37, 53–62, https://doi.org/10.2458/azu_js_rc.37.1646, 1995.
- 490 Bard, E., Arnold, M., Mangerud, J., Paterne, M., Labeyrie, L., Duprat, J., Mélières, M.-A., Sønstegaard, E., and Duplessy, J.-C.: The North Atlantic atmosphere-sea surface ^{14}C gradient during the Younger Dryas climatic event, *Earth and Planetary Science Letters*, 126, 275–287, [https://doi.org/10.1016/0012-821X\(94\)90112-0](https://doi.org/10.1016/0012-821X(94)90112-0), 1994.
- Bevington, P. R. and Robinson, D. K.: *Data reduction and error analysis for the physical sciences* McGraw-Hill, New York, 1969, 235, 1969.
- 495 Broecker, W.: The Great Ocean Conveyor, *oceanog*, 4, 79–89, <https://doi.org/10.5670/oceanog.1991.07>, 1991.
- Broecker, W. S., Gerard, R., Ewing, M., and Heezen, B. C.: Natural radiocarbon in the Atlantic Ocean, *J. Geophys. Res.*, 65, 2903–2931, <https://doi.org/10.1029/JZ065i009p02903>, 1960.
- Brouard, E., Roy, M., Godbout, P.-M., and Veillette, J. J.: A framework for the timing of the final meltwater outbursts from glacial Lake Agassiz-Ojibway, *Quaternary Science Reviews*, 274, 107269, <https://doi.org/10.1016/j.quascirev.2021.107269>,
500 2021.
- Butzin, M., Köhler, P., and Lohmann, G.: Marine radiocarbon reservoir age simulations for the past 50,000 years, *Geophysical Research Letters*, 44, 8473–8480, <https://doi.org/10.1002/2017GL074688>, 2017.
- Coulthard, R. D., Furze, M. F. A., Pieńkowski, A. J., Chantel Nixon, F., and England, J. H.: New marine ΔR values for Arctic Canada, *Quaternary Geochronology*, 5, 419–434, <https://doi.org/10.1016/j.quageo.2010.03.002>, 2010.
- 505 Davies, J., Mathiasen, A. M., Kristiansen, K., Hansen, K. E., Wacker, L., Alstrup, A. K. O., Munk, O. L., Pearce, C., and Seidenkrantz, M.-S.: Linkages between ocean circulation and the Northeast Greenland Ice Stream in the Early Holocene, *Quaternary Science Reviews*, 286, 107530, <https://doi.org/10.1016/j.quascirev.2022.107530>, 2022.
- Devendra, D., Łącka, M., Telesiński, M. M., Rasmussen, T. L., Szybor, K., and Zajączkowski, M.: Paleoceanography of the Northwestern Greenland Sea and Return Atlantic Current evolution, 35–4 kyr BP, *Global and Planetary Change*, 217, 103947, <https://doi.org/10.1016/j.gloplacha.2022.103947>,
510 2022.
- El bani Altuna, N., Ezat, M. M., Greaves, M., and Rasmussen, T. L.: Millennial-Scale Changes in Bottom Water Temperature and Water Mass Exchange Through the Fram Strait 79°N, 63–13 ka, *Paleoceanography and Paleoclimatology*, 36, e2020PA004061, <https://doi.org/10.1029/2020PA004061>, 2021.
- England, J., Dyke, A. S., Coulthard, R. D., Mcneely, R., and Aitken, A.: The exaggerated radiocarbon age of deposit-feeding molluscs in calcareous environments, *Boreas*, 42, 362–373, <https://doi.org/10.1111/j.1502-3885.2012.00256.x>, 2013.
515
- Erbs-Hansen, D. R., Knudsen, K. L., Olsen, J., Lykke-Andersen, H., Underbjerg, J. A., and Sha, L.: Paleoceanographical development off Sisimiut, West Greenland, during the mid- and late Holocene: A multiproxy study, *Marine Micropaleontology*, 102, 79–97, <https://doi.org/10.1016/j.marmicro.2013.06.003>, 2013.

- 520 Forman, S. L. and Polyak, L.: Radiocarbon content of pre-bomb marine mollusks and variations in the ^{14}C Reservoir age for coastal areas of the Barents and Kara Seas, Russia, *Geophys. Res. Lett.*, 24, 885–888, <https://doi.org/10.1029/97GL00761>, 1997.
- GEBCO Bathymetric Compilation Group: GEBCO_2022 Grid, British Oceanographic Data Centre, National Oceanography Centre, NERC, UK, <https://doi.org/doi:10.5285/e0f0bb80-ab44-2739-e053-6c86abc0289c>, 2022.
- 525 Glueder, A., Mix, A. C., Milne, G. A., Reilly, B. T., Clark, J., Jakobsson, M., Mayer, L., Fallon, S. J., Southon, J., Padman, J., Ross, A., Cronin, T., and McKay, J. L.: Calibrated relative sea levels constrain isostatic adjustment and ice history in northwest Greenland, *Quaternary Science Reviews*, 293, 107700, <https://doi.org/10.1016/j.quascirev.2022.107700>, 2022.
- Hansen, K. E., Giraudeau, J., Wacker, L., Pearce, C., and Seidenkrantz, M.-S.: Reconstruction of Holocene oceanographic conditions in eastern Baffin Bay, *Climate of the Past*, 16, 1075–1095, <https://doi.org/10.5194/cp-16-1075-2020>, 2020.
- 530 Hansen, K. E., Lorenzen, J., Davies, J., Wacker, L., Pearce, C., and Seidenkrantz, M.-S.: Deglacial to Mid Holocene environmental conditions on the northeastern Greenland shelf, western Fram Strait, *Quaternary Science Reviews*, 293, 107704, <https://doi.org/10.1016/j.quascirev.2022.107704>, 2022.
- 535 Heaton, T. J., Köhler, P., Butzin, M., Bard, E., Reimer, R. W., Austin, W. E. N., Ramsey, C. B., Grootes, P. M., Hughen, K. A., Kromer, B., Reimer, P. J., Adkins, J., Burke, A., Cook, M. S., Olsen, J., and Skinner, L. C.: Marine20—The Marine Radiocarbon Age Calibration Curve (0–55,000 cal BP), *Radiocarbon*, 62, 779–820, <https://doi.org/10.1017/RDC.2020.68>, 2020.
- Heaton, T. J., Bard, E., Bronk Ramsey, C., Butzin, M., Köhler, P., Muscheler, R., Reimer, P. J., and Wacker, L.: Radiocarbon: A key tracer for studying Earth’s dynamo, climate system, carbon cycle, and Sun, *Science*, 374, eabd7096, <https://doi.org/10.1126/science.abd7096>, 2021.
- 540 Heaton, T. J., Bard, E., Ramsey, C. B., Butzin, M., Hatté, C., Hughen, K. A., Köhler, P., and Reimer, P. J.: A RESPONSE TO COMMUNITY QUESTIONS ON THE MARINE20 RADIOCARBON AGE CALIBRATION CURVE: MARINE RESERVOIR AGES AND THE CALIBRATION OF ^{14}C SAMPLES FROM THE OCEANS, *Radiocarbon*, 65, 247–273, <https://doi.org/10.1017/RDC.2022.66>, 2023.
- Hesshaimer, V., Heimann, M., and Levin, I.: Radiocarbon evidence for a smaller oceanic carbon dioxide sink than previously believed, *Nature*, 370, 201–203, <https://doi.org/10.1038/370201a0>, 1994.
- 545 Hjort, C.: A sea correction for East Greenland, *Geologiska Föreningen i Stockholm Förhandlingar*, 95, 132–134, <https://doi.org/10.1080/11035897309455434>, 1973.
- Hogg, A. G., Heaton, T. J., Hua, Q., Palmer, J. G., Turney, C. S., Southon, J., Bayliss, A., Blackwell, P. G., Boswijk, G., Ramsey, C. B., Pearson, C., Petchey, F., Reimer, P., Reimer, R., and Wacker, L.: SHCal20 Southern Hemisphere Calibration, 0–55,000 Years cal BP, *Radiocarbon*, 62, 759–778, <https://doi.org/10.1017/RDC.2020.59>, 2020.
- 550 Hua, Q., Webb, G. E., Zhao, J., Nothdurft, L. D., Lybolt, M., Price, G. J., and Opdyke, B. N.: Large variations in the Holocene marine radiocarbon reservoir effect reflect ocean circulation and climatic changes, *Earth and Planetary Science Letters*, 422, 33–44, <https://doi.org/10.1016/j.epsl.2015.03.049>, 2015.
- 555 Jackson, R., Andreasen, N., Oksman, M., Andersen, T. J., Pearce, C., Seidenkrantz, M.-S., and Ribeiro, S.: Marine conditions and development of the Sirius Water polynya on the North-East Greenland shelf during the Younger Dryas-Holocene, *Quaternary Science Reviews*, 291, 107647, <https://doi.org/10.1016/j.quascirev.2022.107647>, 2022.

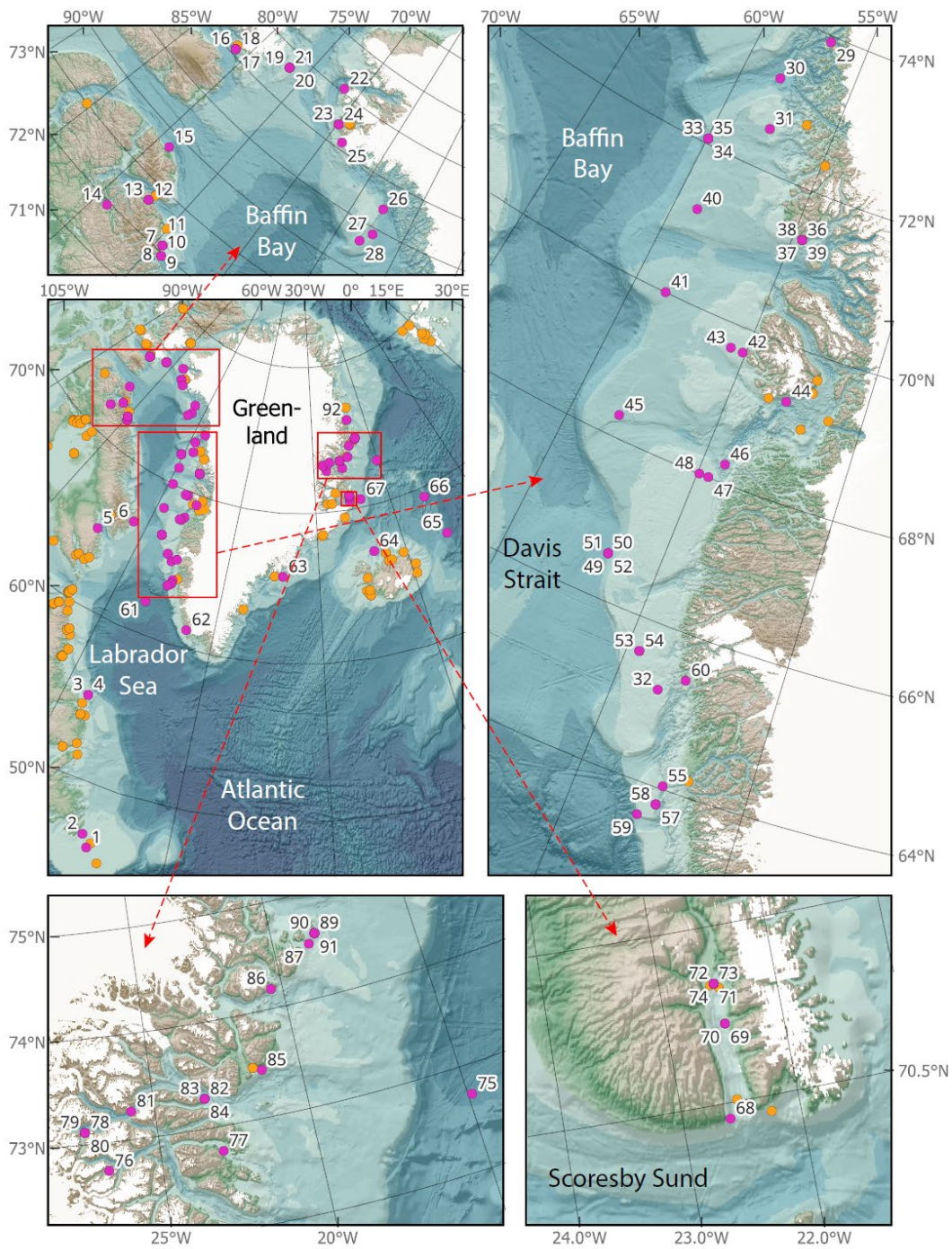
- Jennings, A., Andrews, J., and Wilson, L.: Holocene environmental evolution of the SE Greenland Shelf North and South of the Denmark Strait: Irminger and East Greenland current interactions, *Quaternary Science Reviews*, 30, 980–998, <https://doi.org/10.1016/j.quascirev.2011.01.016>, 2011.
- 560 Jensen, K. G., Kuijpers, A., Koc, N., and Heinemeier, J.: Diatom evidence of hydrographic changes and ice conditions in Igaliku Fjord, South Greenland, during the past 1500 years, *Holocene*, 14, 152–164, <https://doi.org/10.1191/0959683604hl698rp>, 2004.
- Jones, E. P., Swift, J. H., Anderson, L. G., Lipizer, M., Civitarese, G., Falkner, K. K., Kattner, G., and McLaughlin, F.: Tracing Pacific water in the North Atlantic Ocean, *Journal of Geophysical Research: Oceans*, 108, <https://doi.org/10.1029/2001JC001141>, 2003.
- 565 Kimoto, K.: Planktic Foraminifera, in: *Marine Protists: Diversity and Dynamics*, edited by: Ohtsuka, S., Suzuki, T., Horiguchi, T., Suzuki, N., and Not, F., Springer Japan, Tokyo, 129–178, https://doi.org/10.1007/978-4-431-55130-0_7, 2015.
- Knudsen, K. L., Stabell, B., Seidenkrantz, M.-S., Eiríksson, J., and Blake, W.: Deglacial and Holocene conditions in northernmost Baffin Bay: sediments, foraminifera, diatoms and stable isotopes, *Boreas*, 37, 346–376, <https://doi.org/10.1111/j.1502-3885.2008.00035.x>, 2008.
- 570 Krawczyk, D. W., Witkowski, A., Moros, M., Lloyd, J. M., Høyer, J. L., Miettinen, A., and Kuijpers, A.: Quantitative reconstruction of Holocene sea ice and sea surface temperature off West Greenland from the first regional diatom data set: Holocene Paleoceanography in West Greenland, *Paleoceanography*, 32, 18–40, <https://doi.org/10.1002/2016PA003003>, 2017.
- Lassen, S. J., Kuijpers, A., Kunzendorf, H., Hoffmann-Wieck, G., Mikkelsen, N., and Konradi, P.: Late-Holocene Atlantic bottom-water variability in Igaliku Fjord, South Greenland, reconstructed from foraminifera faunas, *The Holocene*, 14, 165–171, <https://doi.org/10.1191/0959683604hl699rp>, 2004.
- 575 Levac, E., Vernal, A. D., and Blake Jr, W.: Sea-surface conditions in northernmost Baffin Bay during the Holocene: palynological evidence, *J. Quaternary Sci.*, 16, 353–363, <https://doi.org/10.1002/jqs.614>, 2001.
- Li, D., Sha, L., Li, J., Jiang, H., Liu, Y., and Wu, Y.: Summer Sea-Surface Temperatures and Climatic Events in Vaigat Strait, West Greenland, during the Last 5000 Years, *Sustainability*, 9, 704, <https://doi.org/10.3390/su9050704>, 2017.
- 580 Liljequist, G. H.: *High latitudes: A history of Swedish Polar travels and research*, Swedish Polar Research Secretariat in collaboration with Streiffert, Stockholm, 607 pp., 1993.
- Lloyd, J., Moros, M., Perner, K., Telford, R. J., Kuijpers, A., Jansen, E., and McCarthy, D.: A 100 yr record of ocean temperature control on the stability of Jakobshavn Isbrae, West Greenland, *Geology*, 39, 867–870, <https://doi.org/10.1130/G32076.1>, 2011.
- 585 Lloyd, J. M.: Late Holocene environmental change in Disko Bugt, west Greenland: interaction between climate, ocean circulation and Jakobshavn Isbrae, *Boreas*, 35, 35–49, <https://doi.org/10.1111/j.1502-3885.2006.tb01111.x>, 2006.
- Lougheed, B. C., Filipsson, H. L., and Snowball, I.: Large spatial variations in coastal ¹⁴C reservoir age – a case study from the Baltic Sea, *Climate of the Past*, 9, 1015–1028, <https://doi.org/10.5194/cp-9-1015-2013>, 2013.
- 590 Mangerud, J.: Radiocarbon dating of marine shells, including a discussion of apparent age of Recent shells from Norway, *Boreas*, 1, 143–172, <https://doi.org/10.1111/j.1502-3885.1972.tb00147.x>, 1972.

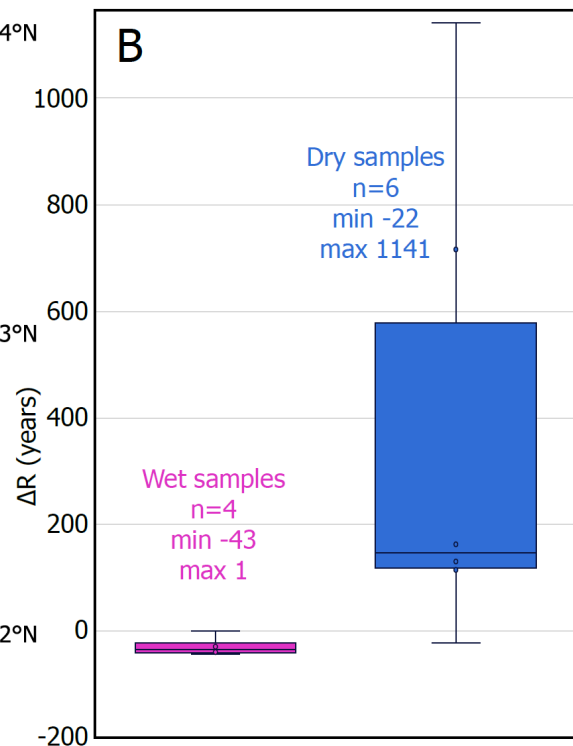
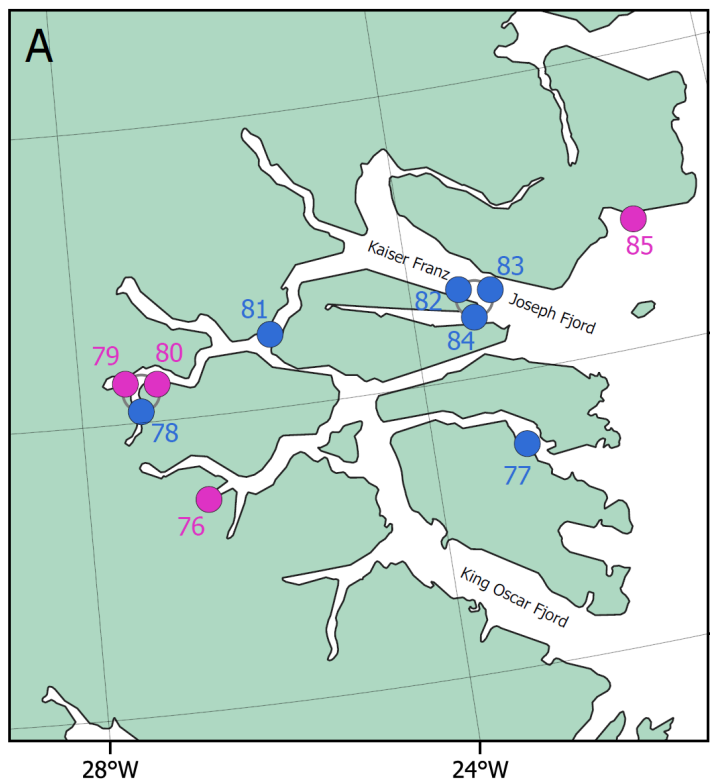
- Mangerud, J., Bondevik, S., Gulliksen, S., Karin Hufthammer, A., and Høisæter, T.: Marine 14C reservoir ages for 19th century whales and molluscs from the North Atlantic, *Quaternary Science Reviews*, 25, 3228–3245, <https://doi.org/10.1016/j.quascirev.2006.03.010>, 2006.
- Matsumoto, K.: Radiocarbon-based circulation age of the world oceans, *Journal of Geophysical Research: Oceans*, 112, <https://doi.org/10.1029/2007JC004095>, 2007.
- McNeely, R., Dyke, A. S., and Southon, J. R.: Canadian marine reservoir ages, preliminary data assessment, 2006.
- Millan, R., Rignot, E., Mougnot, J., Wood, M., Bjørk, A. A., and Morlighem, M.: Vulnerability of Southeast Greenland Glaciers to Warm Atlantic Water From Operation IceBridge and Ocean Melting Greenland Data, *Geophysical Research Letters*, 45, 2688–2696, <https://doi.org/10.1002/2017GL076561>, 2018.
- 600 Møller, H. S., Jensen, K. G., Kuijpers, A., Aagaard-Sørensen, S., Seidenkrantz, M.-S., Prins, M., Endler, R., and Mikkelsen, N.: Late-Holocene environment and climatic changes in Ameralik Fjord, southwest Greenland: evidence from the sedimentary record, *The Holocene*, 16, 685–695, <https://doi.org/10.1191/0959683606hl963rp>, 2006.
- Moros, M., Jensen, K. G., and Kuijpers, A.: Mid-to late-Holocene hydrological and climatic variability in Disko Bugt, central West Greenland, *The Holocene*, 16, 357–367, <https://doi.org/10.1191/0959683606hl933rp>, 2006.
- 605 Moros, M., Lloyd, J. M., Perner, K., Krawczyk, D., Blanz, T., de Vernal, A., Ouellet-Bernier, M.-M., Kuijpers, A., Jennings, A. E., Witkowski, A., Schneider, R., and Jansen, E.: Surface and sub-surface multi-proxy reconstruction of middle to late Holocene palaeoceanographic changes in Disko Bugt, West Greenland, *Quaternary Science Reviews*, 132, 146–160, <https://doi.org/10.1016/j.quascirev.2015.11.017>, 2016.
- Nathorst, A. G.: *Två somrar i Norra Ishafvet. 1, Kung Karls land : Spetsbergens kringsegling*, Beijer, Stockholm, 1900.
- 610 Nørgaard-Pedersen, N. and Mikkelsen, N.: 8000 year marine record of climate variability and fjord dynamics from Southern Greenland, *Marine Geology*, 264, 177–189, <https://doi.org/10.1016/j.margeo.2009.05.004>, 2009.
- O’Connor, S., Ulm, S., Fallon, S. J., Barham, A., and Loch, I.: Pre-Bomb Marine Reservoir Variability in the Kimberley Region, Western Australia, *Radiocarbon*, 52, 1158–1165, <https://doi.org/10.1017/S0033822200046233>, 2010.
- 615 Olsen, I. L., Laberg, J. S., Forwick, M., Rydningen, T. A., and Husum, K.: Late Weichselian and Holocene behavior of the Greenland Ice Sheet in the Kejser Franz Josef Fjord system, NE Greenland, *Quaternary Science Reviews*, 284, 107504, <https://doi.org/10.1016/j.quascirev.2022.107504>, 2022.
- Olsen, J., Rasmussen, T. L., and Reimer, P. J.: North Atlantic marine radiocarbon reservoir ages through Heinrich event H4: a new method for marine age model construction, *Geological Society, London, Special Publications*, 398, SP398.2, <https://doi.org/10.1144/SP398.2>, 2014.
- 620 Olsen, J., Tikhomirov, D., Grosen, C., Heinemeier, J., and Klein, M.: Radiocarbon Analysis on the New AARAMS 1MV Tandetron, *Radiocarbon*, 59, 905–913, <https://doi.org/10.1017/RDC.2016.85>, 2017.
- Olsson, I. U.: Content of C-14 in marine mammals from northern Europe., *Radiocarbon*, 22, 662–675, https://doi.org/10.2458/azu_js_rc.22.656, 1980.
- 625 Ouellet-Bernier, M.-M., Vernal, A. de, Hillaire-Marcel, C., and Moros, M.: Paleooceanographic changes in the Disko Bugt area, West Greenland, during the Holocene, *The Holocene*, 0959683614544060, <https://doi.org/10.1177/0959683614544060>, 2014.

- Pados-Dibattista, T., Pearce, C., Detlef, H., Bendtsen, J., and Seidenkrantz, M.-S.: Holocene palaeoceanography of the Northeast Greenland shelf, *Climate of the Past*, 18, 103–127, <https://doi.org/10.5194/cp-18-103-2022>, 2022.
- Pearce, C., Varhelyi, A., Wastegård, S., Muschitiello, F., Barrientos, N., O'Regan, M., Cronin, T. M., Gemery, L., Semiletov, I., Backman, J., and Jakobsson, M.: The 3.6 ka Aniakchak tephra in the Arctic Ocean: a constraint on the Holocene radiocarbon reservoir age in the Chukchi Sea, *Climate of the Past*, 13, 303–316, <https://doi.org/10.5194/cp-13-303-2017>, 2017.
- 630
- Peral, M., Austin, W. E. N., and Noormets, R.: Identification of Atlantic water inflow on the north Svalbard shelf during the Holocene, *Journal of Quaternary Science*, 37, 86–99, <https://doi.org/10.1002/jqs.3374>, 2022.
- Perner, K., Moros, M., Snowball, I., Lloyd, J. M., Kuijpers, A., and Richter, T.: Establishment of modern circulation pattern at c. 6000 cal a BP in Disko Bugt, central West Greenland: opening of the Vaigat Strait, *J. Quaternary Sci.*, 28, 480–489, <https://doi.org/10.1002/jqs.2638>, 2013.
- 635
- Pieńkowski, A. J., Coulthard, R. D., and Furze, M. F. A.: Revised marine reservoir offset (ΔR) values for molluscs and marine mammals from Arctic North America, *Boreas*, n/a, <https://doi.org/10.1111/bor.12606>, 2022a.
- Pieńkowski, A. J., Husum, K., Furze, M. F. A., Missana, A. F. J. M., Irvál, N., Divine, D. V., and Eilertsen, V. T.: Revised ΔR values for the Barents Sea and its archipelagos as a pre-requisite for accurate and robust marine-based ^{14}C chronologies, *Quaternary Geochronology*, 68, 101244, <https://doi.org/10.1016/j.quageo.2021.101244>, 2022b.
- 640
- Reimer, P. J. and Reimer, R. W.: A marine reservoir correction database and on-line interface., *Radiocarbon*, 43, 461–463, https://doi.org/10.2458/azu_js_rc.43.3986, 2001.
- Reimer, P. J., Bard, E., Bayliss, A., Beck, J. W., Blackwell, P. G., Bronk Ramsey, C., Grootes, P. M., Guilderson, T. P., Haflidason, H., Hajdas, I., Hatté, C., Heaton, T. J., Hoffmann, D. L., Hogg, A. G., Hughen, K. A., Kaiser, K. F., Kromer, B., Manning, S. W., Niu, M., Reimer, R. W., Richards, D. A., Scott, E. M., Southon, J. R., Staff, R. A., Turney, C. S. M., and Plicht, J. van der: IntCal13 and Marine13 Radiocarbon Age Calibration Curves 0–50,000 Years cal BP, *Radiocarbon*, 55, 1869–1887, https://doi.org/10.2458/azu_js_rc.55.16947, 2013.
- 645
- Reimer, P. J., Austin, W. E. N., Bard, E., Bayliss, A., Blackwell, P. G., Ramsey, C. B., Butzin, M., Cheng, H., Edwards, R. L., Friedrich, M., Grootes, P. M., Guilderson, T. P., Hajdas, I., Heaton, T. J., Hogg, A. G., Hughen, K. A., Kromer, B., Manning, S. W., Muscheler, R., Palmer, J. G., Pearson, C., Plicht, J. van der, Reimer, R. W., Richards, D. A., Scott, E. M., Southon, J. R., Turney, C. S. M., Wacker, L., Adolphi, F., Büntgen, U., Capano, M., Fahrni, S. M., Fogtmann-Schulz, A., Friedrich, R., Köhler, P., Kudsk, S., Miyake, F., Olsen, J., Reinig, F., Sakamoto, M., Sookdeo, A., and Talamo, S.: The IntCal20 Northern Hemisphere Radiocarbon Age Calibration Curve (0–55 cal kBP), *Radiocarbon*, 62, 725–757, <https://doi.org/10.1017/RDC.2020.41>, 2020.
- 650
- 655 Reimer, R. W. and Reimer, P. J.: An Online Application for ΔR Calculation, *Radiocarbon*, 59, 1623–1627, <https://doi.org/10.1017/RDC.2016.117>, 2017.
- Riis-Carstensen, E.: Nogle Bemærkninger vedrørende Godthaab ekspeditionen 1928., *Geografisk Tidsskrift*, 1929.
- Schaffer, J., Kanzow, T., von Appen, W.-J., von Albedyll, L., Arndt, J. E., and Roberts, D. H.: Bathymetry constrains ocean heat supply to Greenland's largest glacier tongue, *Nat. Geosci.*, 13, 227–231, <https://doi.org/10.1038/s41561-019-0529-x>, 2020.
- 660
- Seidenkrantz, M. S., Roncaglia, L., Fischel, A., Heilmann-Clausen, C., Kuijpers, A., and Moros, M.: Variable North Atlantic climate seesaw patterns documented by a late Holocene marine record from Disko Bugt, West Greenland, *Marine Micropaleontology*, 68, 66–83, <https://doi.org/DOI.10.1016/j.marmicro.2008.01.006>, 2008.

- 665 Selin, N. I.: The growth and life span of bivalve mollusks at the northeastern coast of Sakhalin Island, *Russ J Mar Biol*, 36, 258–269, <https://doi.org/10.1134/S1063074010040048>, 2010.
- Sha, L., Knudsen, K. L., Eiriksson, J., Björck, S., Jiang, H., Yang, X., Yu, X., and Li, D.: Diatom-reconstructed summer sea-surface temperatures and climatic events off North Iceland during the last deglaciation and Holocene, *Palaeogeography, Palaeoclimatology, Palaeoecology*, 602, 111154, <https://doi.org/10.1016/j.palaeo.2022.111154>, 2022.
- 670 Skinner, L. C., Muschitiello, F., and Scrivner, A. E.: Marine Reservoir Age Variability Over the Last Deglaciation: Implications for Marine Carbon Cycling and Prospects for Regional Radiocarbon Calibrations, *Paleoceanography and Paleoclimatology*, 34, 1807–1815, <https://doi.org/10.1029/2019PA003667>, 2019.
- Smethie Jr., W. M., Fine, R. A., Putzka, A., and Jones, E. P.: Tracing the flow of North Atlantic Deep Water using chlorofluorocarbons, *Journal of Geophysical Research: Oceans*, 105, 14297–14323, <https://doi.org/10.1029/1999JC900274>, 2000.
- 675 Stevenard, N., Montero-Serrano, J.-C., Eynaud, F., St-Onge, G., Zaragosi, S., and Copland, L.: Lateglacial and Holocene sedimentary dynamics in northwestern Baffin Bay as recorded in sediment cores from Cape Norton Shaw Inlet (Nunavut, Canada), *Boreas*, 51, 532–552, <https://doi.org/10.1111/bor.12575>, 2022.
- Stolpe, H.: Meeting notes of the Swedish Society for Anthropology and Geography, 16 March 1894., *Ymer*, 14, 1894.
- 680 Stuiver, M. and Braziunas, T. F.: Sun, ocean, climate and atmospheric ^{14}C : an evaluation of causal and spectral relationships, *The Holocene*, 3, 289–305, <https://doi.org/10.1177/095968369300300401>, 1993.
- Stuiver, M. and Polach, H. A.: Discussion: reporting of ^{14}C data, *Radiocarbon*, 19, 355–363, 1977.
- Stuiver, M., Pearson, G. W., and Braziunas, T.: Radiocarbon Age Calibration of Marine Samples Back to 9000 Cal Yr BP, *Radiocarbon*, 28, 980–1021, <https://doi.org/10.1017/S0033822200060264>, 1986.
- 685 Sutherland, D. A., Straneo, F., Stenson, G. B., Davidson, F. J. M., Hammill, M. O., and Rosing-Asvid, A.: Atlantic water variability on the SE Greenland continental shelf and its relationship to SST and bathymetry, *Journal of Geophysical Research: Oceans*, 118, 847–855, <https://doi.org/10.1029/2012JC008354>, 2013.
- Tauber, H. and Funder, S.: C^{14} content of recent molluscs from Scoresby Sund, central East Greenland, *The Geological Survey of Greenland*, 75, 95–99, 1975.
- 690 Telesiński, M. M., Ezat, M. M., Muschitiello, F., Bauch, H. A., and Spielhagen, R. F.: Ventilation History of the Nordic Seas Deduced From Pelagic-Benthic Radiocarbon Age Offsets, *Geochemistry, Geophysics, Geosystems*, 22, e2020GC009132, <https://doi.org/10.1029/2020GC009132>, 2021.
- Walsh, J. E., Fetterer, F., Scott Stewart, J., and Chapman, W. L.: A database for depicting Arctic sea ice variations back to 1850, *Geogr Rev*, 107, 89–107, <https://doi.org/10.1111/j.1931-0846.2016.12195.x>, 2017.
- 695 Wanamaker, A. D., Heinemeier, J., Scourse, J. D., Richardson, C. A., Butler, P. G., Eiriksson, J., and Knudsen, K. L.: Very Long-Lived Mollusks Confirm 17th Century AD Tephra-Based Radiocarbon Reservoir Ages for North Icelandic Shelf Waters, *Radiocarbon*, 50, 399–412, <https://doi.org/10.1017/S0033822200053510>, 2008.
- West, G., Nilsson, A., Geels, A., Jakobsson, M., Moros, M., Muschitiello, F., Pearce, C., Snowball, I., and O'Regan, M.: Late Holocene Paleomagnetic Secular Variation in the Chukchi Sea, Arctic Ocean, *Geochemistry, Geophysics, Geosystems*, 23, e2021GC010187, <https://doi.org/10.1029/2021GC010187>, 2022.

700 WoRMS Editorial Board: World Register of Marine Species. Available from <https://www.marinespecies.org> at VLIZ. Accessed 2023-04-04., <https://doi.org/10.14284/170>, 2023.





705